



Radioactive Waste Management

WM2017 – Panel session LP&S

WM 2017 : Session 22

Panel Session 15.15 - 17:00

Ann McCall

Waste Management Director

Radioactive Waste Management Ltd

Introduction

- RWM Corporate Strategy recognises that NDA has identified Sellafield as a key priority, this is reflected in RWM's work programme.
- Focus at WM2016 on Magnox Swarf Storage Silos
- Further developments and activities
 - Working Together Charter
 - LoC Summit
 - Evidence of success

Real focus on establishing positive relationships

SL now a subsidiary of the NDA

At a senior level we have developed a “working together charter” to promote:

- Early and sustained engagement
- Mutual understanding and sharing of issues
- Development of joint work programmes
- Collaborative working

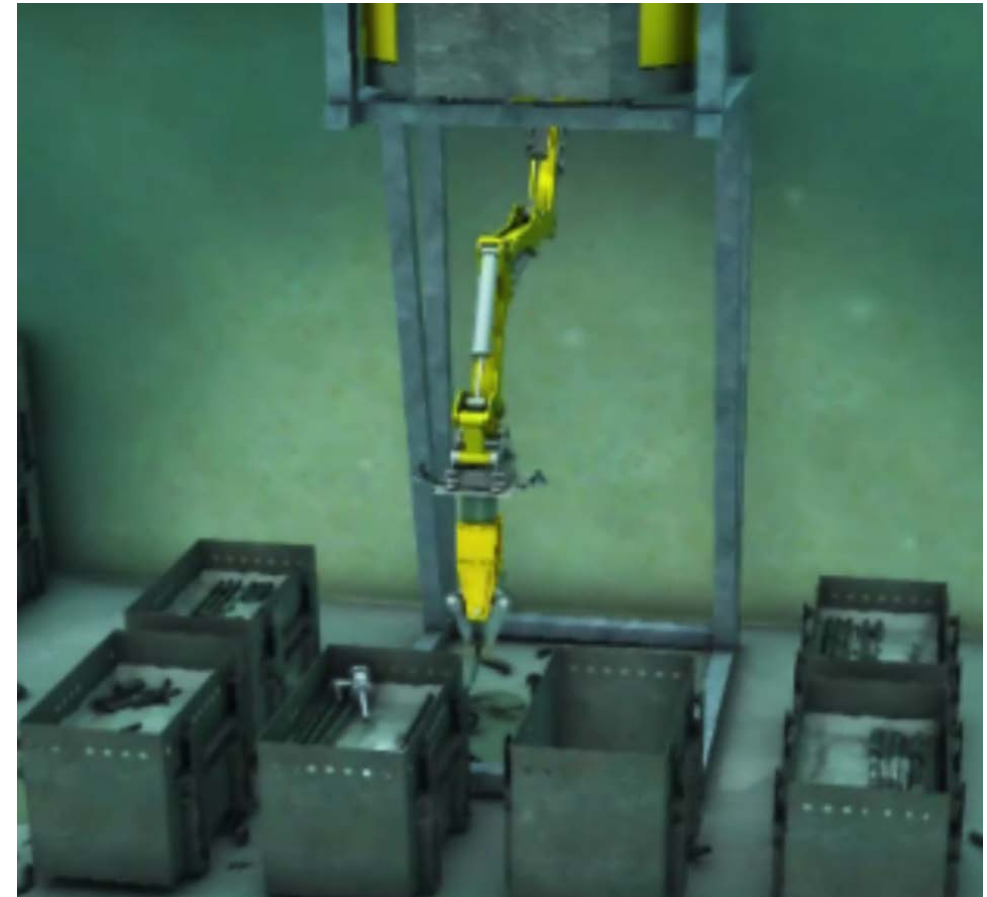


LoC Summit

- RWM led LoC Summit meetings May and October 2016
- Outcome: There needs to be an appropriate balance of risk and the disposability assessment process ensures that the long-term disposability risks are visible when waste retrieval and packaging decisions are made
- RWM as future “duty holder” of waste
- The Radioactive Waste Management Case (RWMC), (as required by existing regulatory guidance), is the appropriate vehicle in which to present the balance of risk case.

Supporting “balance of risk” decision making

- Work with waste producers to understand balance of risk and inform development of “Radioactive Waste Management Cases”
- Provision of early engagement through Theme Days and provision of ‘Expert Views’ to support decision making in advance of formal assessment
- Feed into UK strategy for future national decisions on waste management



Achieve Risk Reduction and Produce Disposable Packages

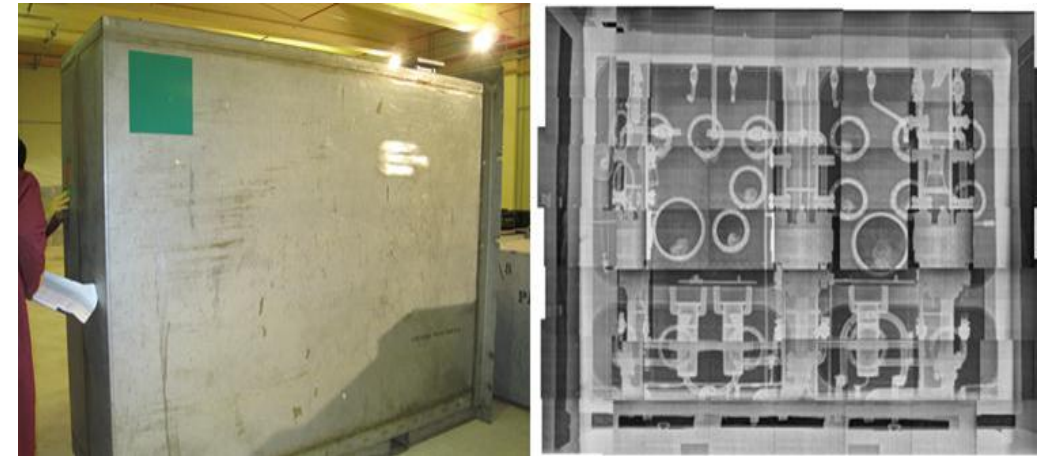
Radioactive Waste Management – Supporting Delivery of Waste Management at Sellafield



Supporting commissioning of the treatment route for Pile Fuel Storage Pond legacy sludges through expansion of the WEP processing envelope



Disposability assessment of DRAGON fuel waste to be processed at the Magnox Encapsulation Plant



Supporting decision making for management of legacy large item Plutonium Contaminated Materials through delivery of Expert View

Enabling improved processing of wastes across Sellafield. Including the increase in throughput at the High Level Waste Vitrification Plant



RWM and Sellafield Ltd staff award for the successful delivery of the 100% RSWD project. Enabling an increase in throughput for wastes arising as a result of fuel reprocessing at Sellafield

Summary

- Focus on continuing to develop positive relationships, with the “working together charter” to promote sharing and joint working
- LoC Summit has helped to develop an understanding of lifetime risk balance to inform decision making
- RWM maintains integrity and robustness of its’ Assessment processes as future “duty holder” of the waste, preparing a safety case for a geological disposal facility (GDF)
- Radioactive Waste Management Cases as vehicle for transparent decision making
- RWM continues to operate in a flexible and open and transparent way to meet the needs of the UK nuclear industry, promoting innovation and enabling accelerated hazard reduction