



A N D R E W S , T E X A S

DOE Waste Management Successes  
Session77 -  
March 8, 2017



ANDREWS, TEXAS

# WCS Current Facilities





# RCRA Waste Landfill (Low Activity Waste Disposal Cell)





# Federal Waste Facility

Containerized Waste Disposal

Bulk Waste Disposal





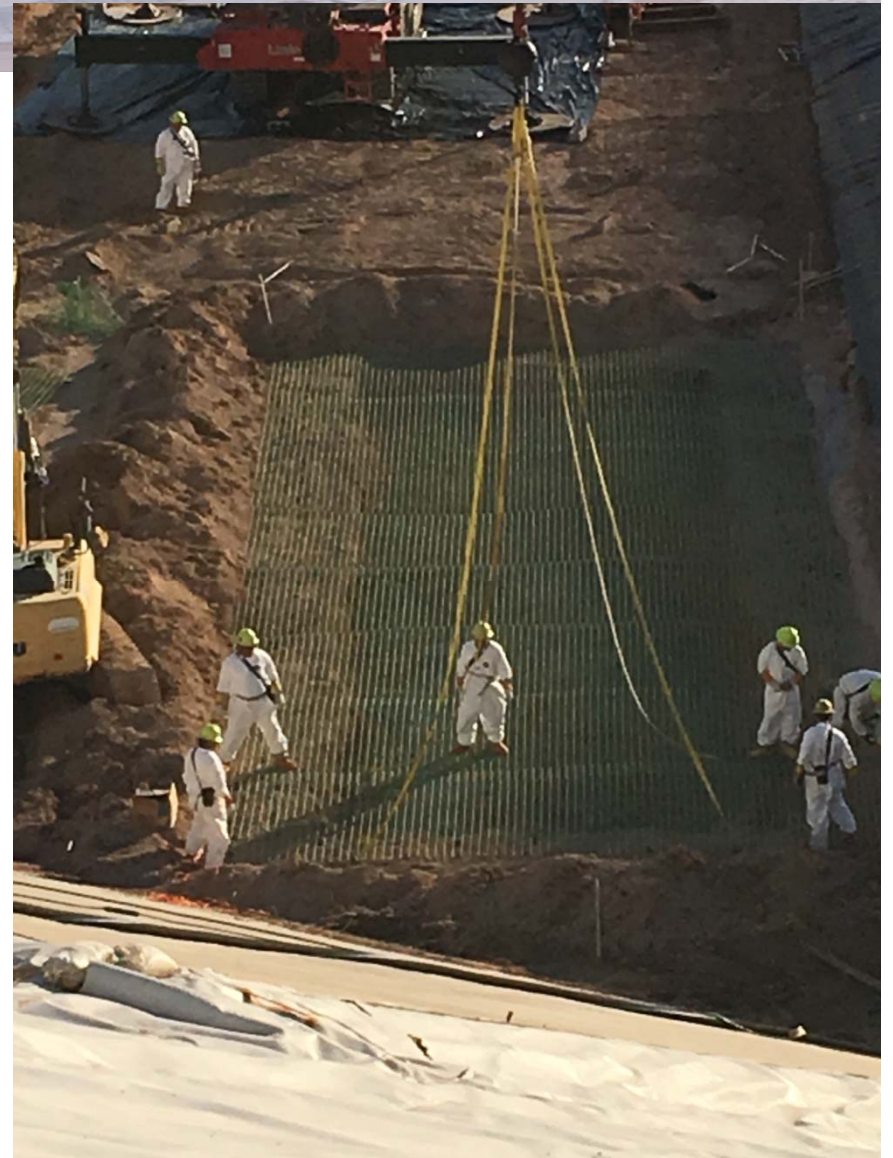
# West Valley Large Components

- 3 months planning and developing the Large Component Plan
- 4 months TCEQ Review and Approval for LC Plan
- 1 month cell preparation and road modifications
- 8/10<sup>th</sup> of a mile from the rail offloading pad to the final cell disposal.
- Maximum speed of the 10 line Goldhofer to the landfill was ~3 mph and into the cell down the 9% slope <2 mph
- Grouting the Large Component 10 days ( 520 yd<sup>3</sup>).
- Completed the disposal safely ,compliantly, 3 days ahead of schedule, overall dose accumulated 20 mrem collective dose for a 38 member crew.



ANDREWS, TEXAS

# Site Preparations





ANDREWS, TEXAS

# WV Component Offloading

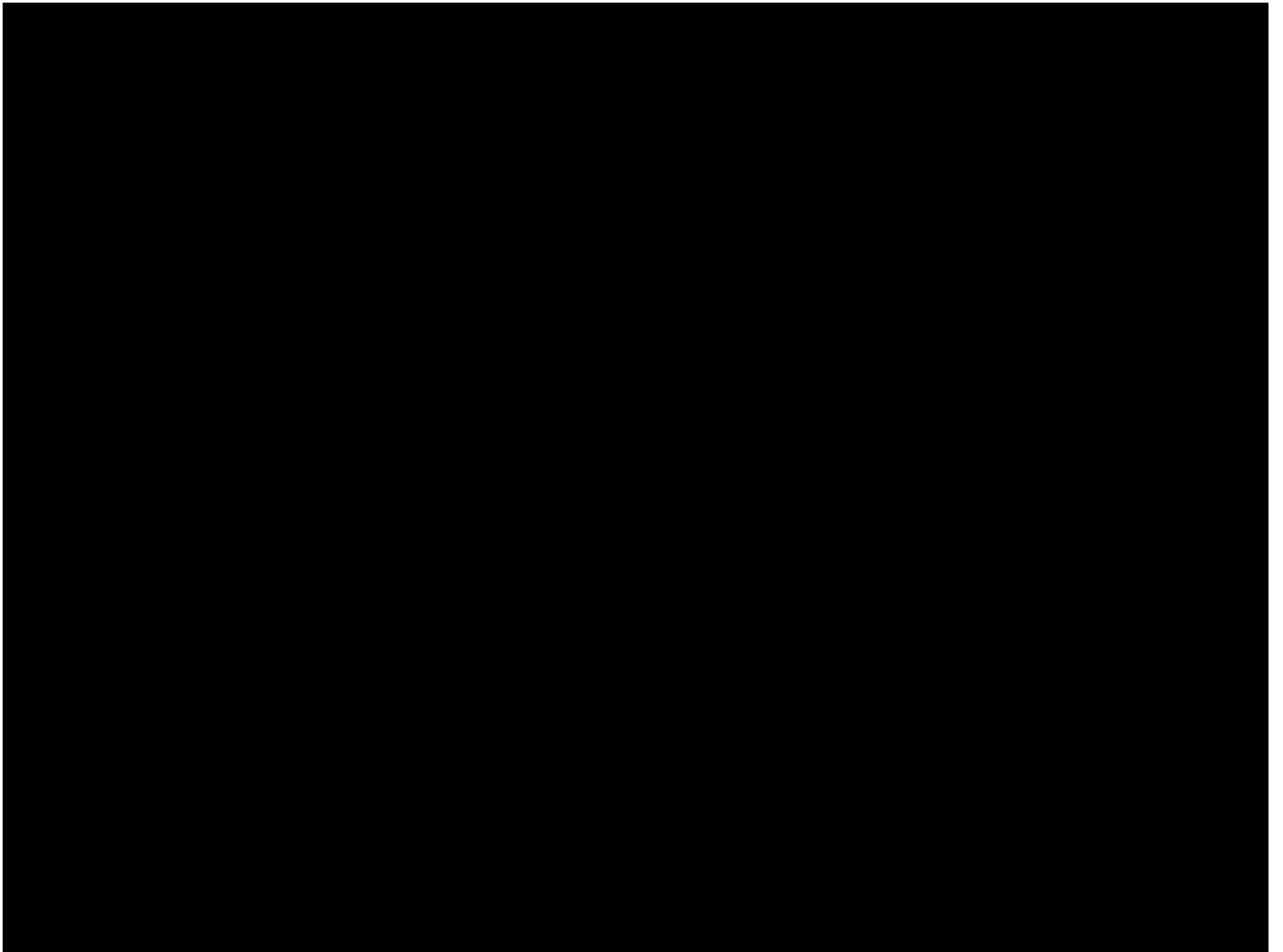




# WV Component Movement









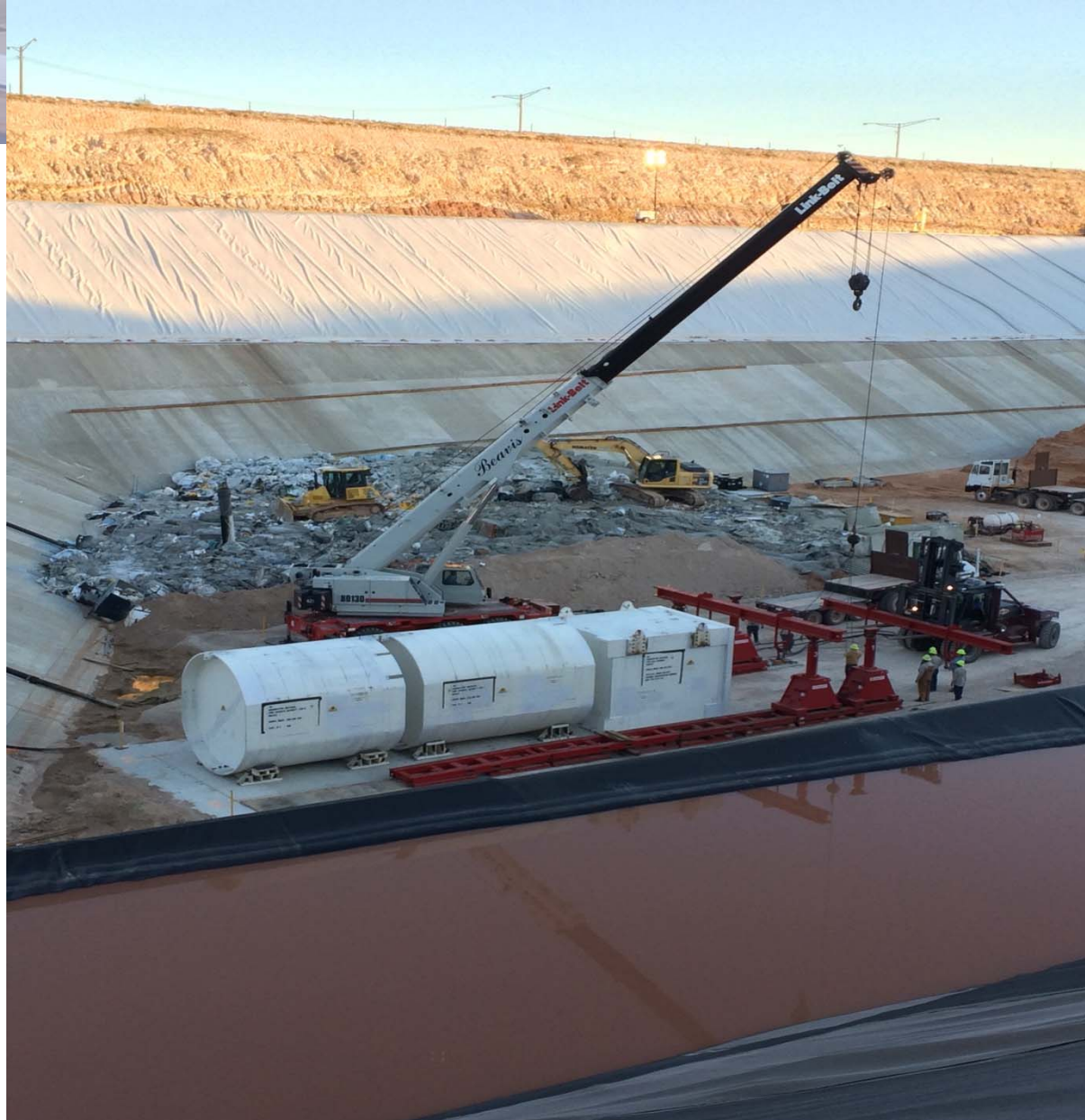
# Component Placement





ANDREWS, TEXAS

# Component Placement





ANDREWS, TEXAS

# Component Placement





ANDREWS, TEXAS

# Large Component Disposal





# Questions?

[www.wcstexas.com](http://www.wcstexas.com)