

Manhattan
Project
National
Historical
Park



Oak Ridge, TN
Established 2015



The Manhattan Project National Historical Park: Engagement and Interpretation in the Energy Communities

Amy Fitzgerald, Ph.D.

March 9, 2107

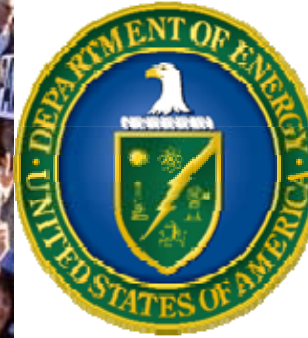
Energy Communities Alliance

- Established in early 1990s to enhance the role of local governments in the DOE cleanup program
- With DOE and the states is an intergovernmental partner that helps educate about local issues that can impact EM
- Has been focused on historical preservation/NPS issues for almost 20 years
- Continues to work collaboratively with DOE, NPS, and other stakeholders to implement the National Park.

Manhattan
Project
National
Historical
Park



Oak Ridge, TN
Established 2015



**Many Partners
Growing the
Park
Everyday**



DOE Site Bus Tours

- This is the crowd learning about the Graphite Reactor at X-10.

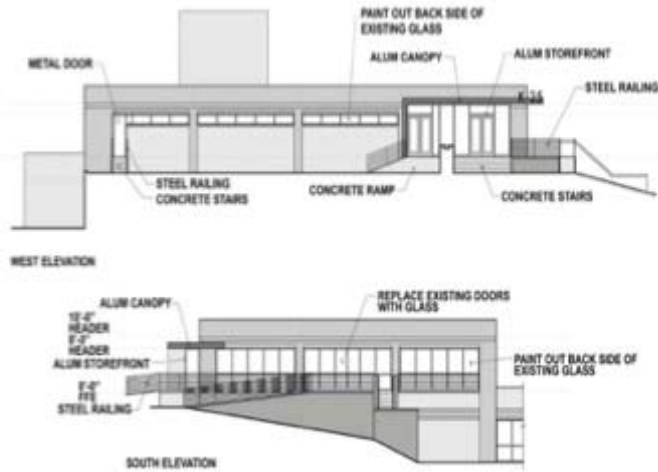


- Some of the attendees are local... others are from as far away as Idaho and Wisconsin.

Department of Energy

- K-25 Historical Center in Final Design

History Center



History Center Exhibit Plan



History Center Immersive Orientation Theater



History Center Exhibits



International Friendship Bell Peace Pavilion project



City of
Oak Ridge
Tennessee



Project Objective

- To construct an iconic Peace Pavilion structure and surrounding gardens to house the International Friendship Bell that honors Japan/U.S. relationships
- The Peace Pavilion will
 - Replace and expand on the prior pavilion which deteriorated and was demolished in 2014
 - Create a striking and significant new community gathering space
 - Serve as a thoughtful symbol of our history and dedication to peace
 - Become a unique feature of the Manhattan Project National Historical Park and a key attraction for its visitors
 - Be constructed with Japanese cooperation, consistent with the forging of the Bell in Kyoto, Japan over 20 years ago



Community Involvement

Recreation and Parks Advisory Board	IFB Citizens Advisory Committee	IFB Fundraising Subcommittee	IFB Public Relations Subcommittee
Alan Tatum, Chair	Alan Tatum, Co-Chair	Pat Postma, Chair	Kay Brookshire, Chair
Steve Dittner, Vice Chair	Pat Postma, Co-Chair	Tom Beehan	Naomi Asher
Naomi Asher	Kay Brookshire	Gerald Boyd	Jerry Luckmann
Ray Garrett	Tom Row	Jim Campbell	Betsy Prine
Kevin Hoyt	Ray Smith	Bonnie Carroll	Ray Smith
David Kitzmiller	Ram Uppuluri	Alan Tatum	Martha Wallus
Fay Martin	Shigeko Uppuluri		
Dan Robbins	Jon Hetrick, ex-officio		
Ken Rueter			

Recreation and Parks Director: Jon Hetrick
 City Manager: Mark Watson
 Oak Ridge City Council

A Monument for the Heart of Oak Ridge



The new location will dramatically increase the prominence and significance of the Bell.

- The Bell and Peace Pavilion will be the centerpiece of Bissell Park, and will be considerably more visible and accessible!

The Bell and Peace Pavilion belong to the community: those who visit the Park, ring the Bell, and gather for celebrations, family events and remembrance!

The Bell and Peace Pavilion belong to the world: With the advent of the Manhattan Project National Historical Park, the NPS estimates 50,000 to 70,000 visitors per year!



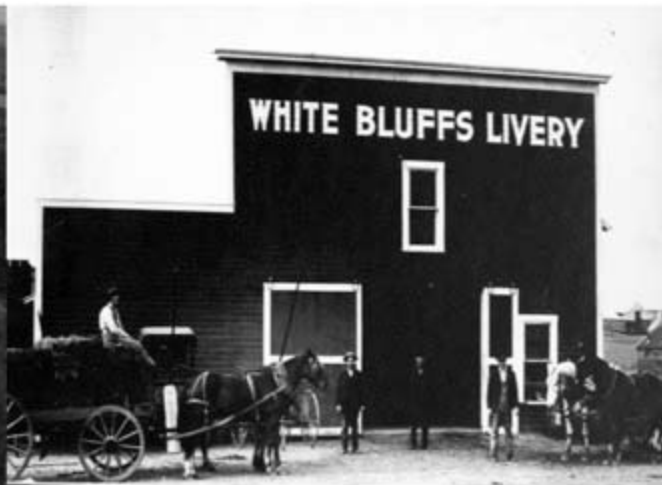
Selected conceptual Structural design

- **The cantilever support design**
 - magnifies the presence of the International Friendship Bell by making it visible from all perspectives.
 - represents the strength of resolve of both the U.S. and Japan to maintain peace.





Manhattan Project National Historical Park Hanford Unit 2016 Progress



**Mayor Brent Gerry
Tri Cities National Park Committee**

National Park Open to Kids of All Ages



Completed Transition of Artifacts to Washington State University-Tri Cities



- Complete collection moved to WSU by 9/30/16
- Historic artifacts, archive materials, photo collections
- WSU to curate, preserve, and make the collection available to museums, students, researchers, public
- Supports expansion of the Hanford History Project
 - Potential to become a resource for research on the Manhattan Project



NPS Centennial Celebration Mid Columbia Mastersingers Concert at B Reactor



REI/Bike Tri Cities Centennial Bike Ride



Coming up in 2017



- Welcome NPS Site Representative to the Tri Cities
- Continue to expand public access to the Park
 - Tours, events, recreation
- Improve outreach to elementary, middle, and high school teachers
- Begin STEM-based experiences and programs
- Expand volunteer opportunities





LOS ALAMOS
where discoveries are made

Rick Reiss
Los Alamos County Council
2/24/17

LOS ALAMOS

Grand Re-Opening: Los Alamos History Museum



- Ribbon cutting held 12/30/17
- Daniel Truman, grandson of Harry Truman, was guest speaker.
- New History Museum Campus includes Hans Bethe House (Cold War Gallery)
- Complete redesign of museum and exhibits (over \$2 million of combined LAC and Historical Society funds)



Grand Re-Opening: Fuller Lodge

- Superintendent Kris Kirby participated in the ribbon cutting ceremony
- Completes multi-phase renovation work at Fuller Lodge (over \$4 million)
- Superintendent Kirby also addressed County Council during this trip.



Updates from Los Alamos DOE Properties

- Staff from Bandelier National Monument (BNM) performed a property assessment on the Pond Cabin, Slotin Building and Battleship Bunker (Pajarito Site).
- BNM is developing a treatment plan for the three properties at Pajarito Site.
- The DOE Field Office is working with NPS to develop a treatment plan for deteriorating concrete at MAPR properties.
- The Bradbury Science Museum is working with NM Highlands University's Program in Interactive Cultural Technology (PICT) to create virtual products for MAPR.



TA-18-1
(Slotin Building)



TA-18-2
(Battleship Building)



TA-18-29 (Pond Cabin)

Other happenings in Los Alamos:

- NPS took over Visitor Center exclusively (Nov. 1st)
- DOE Legacy Management staff including Tracy Atkins, toured MAPR properties (Nov. 2016)
- Junior Ranger booklet for Los Alamos site completed.



- Council hosted reception for Congressman Grijalva (Arizona)
- County selected consultant to complete wayfinding plan (to begin Feb. 2017)
- Request for Proposal advertised for creation of Tourism Strategic Plan (proposals due 2/28/17)



Look Ahead



- Expanded ranger-led programs and additional NPS staff
- NPS volunteer recruitment
- County to focus on implementation of Wayfinding Program and Tourism Strategic Plan to further leverage MPNHP and other assets
- Continued expansion of ScienceFest as signature event (100th anniversary of LA Ranch School)
- Gateway to 3 National Parks campaign
- County to advocate for inclusion of LA Canyon Tunnel vault in MPNHP
- Spring 2017: installation of public WiFi and new historic tour signs
- Preservation/restoration work (DOE property)
- Enhanced public access (DOE property)