



Consent-Based Disposal Siting in the UK

Tom Wintle

Deputy Director: SMRs, Nuclear Decommissioning and Waste
Civil Nuclear and Resilience Directorate

112 Panel: 'The Future of Consent-Based Disposal Siting and Discussion of the Alternatives'

9th March 2017



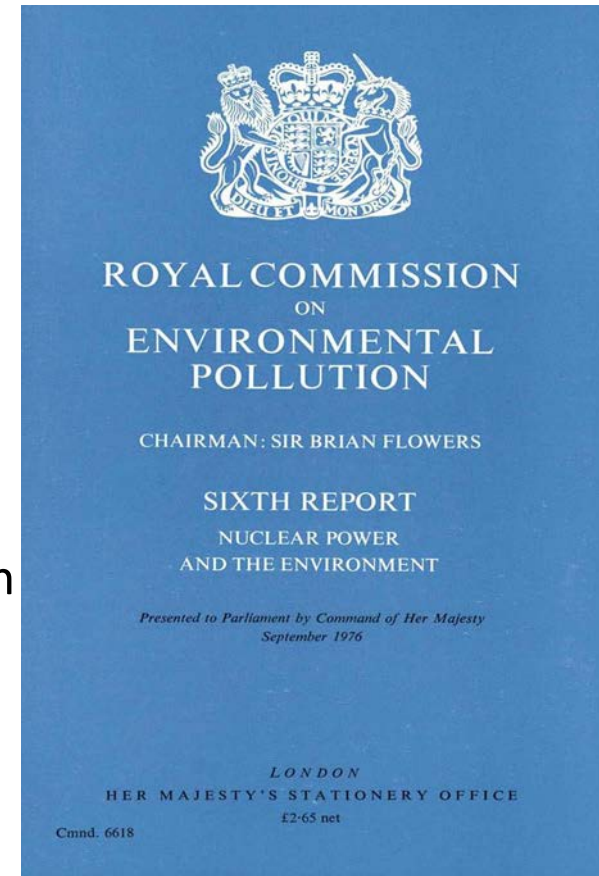
Introduction

- A brief history of disposal siting in the UK and the progress made in identifying ways forward
- Identifying the problem and lessons learned along the way:
 - The MRWS programme in Cumbria
 - Re-evaluation
 - The 2014 White Paper *Implementing Geological Disposal*
- Developing the frameworks for implementation – the Working with Communities policy



UK Nuclear History

- LLW already underway
- Sea disposal (in the distant past)
- Dounreay shaft
- Flowers report 1976:
 - Identified need for sustainable long-term solution
- UKAEA search for an HLW site (1979-81):
 - planning inquiries generated huge public opposition
- Nirex – search for sites for ILW and LLW (1982-97)
- 2008 White Paper Site Selection Process





Reasons for the Nirex failure

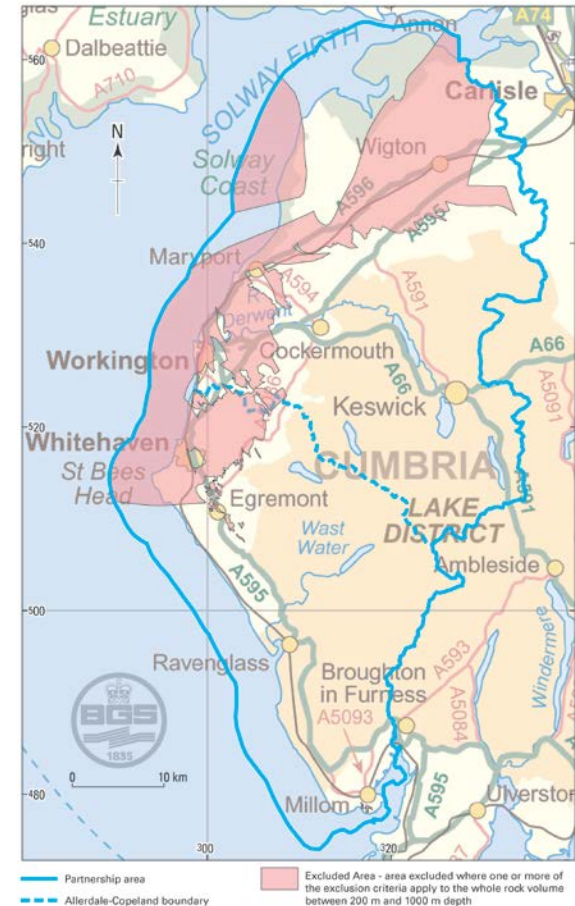
- 15 years, cost £500 million
- Lack of transparency in site selection
- Could not justify selection of Sellafield
- Poor public engagement, generated massive objections
- Decide, announce, defend consultation process
- Was all behind doors, a top-down approach





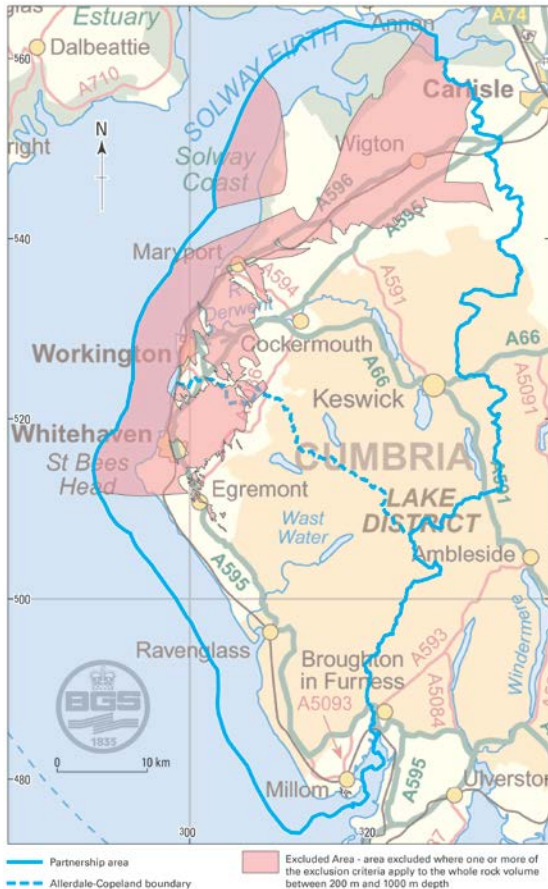
Managing Radioactive Waste Safely

- CoRWM (Committee on Radioactive Waste Management) established in 2003 and reconstituted in 2007
- 2008 White Paper *Managing Radioactive Waste Safely*
- Shepway District Council - decided not to make an Expression of Interest in 2012
- 3 Cumbrian local authorities formally expressed an interest in 2008/9
- Copeland, Allerdale and Cumbria County Council worked together in a local “Partnership”
- Other potential volunteers around country watched developments

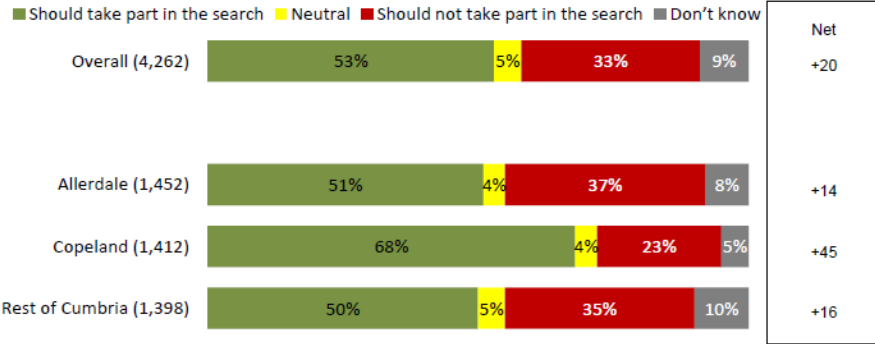




Previous siting process



Geological mapping BGS © NERC. OS topography © Crown Copyright. All rights reserved. 100017897/2010



Base : All respondents (see above)

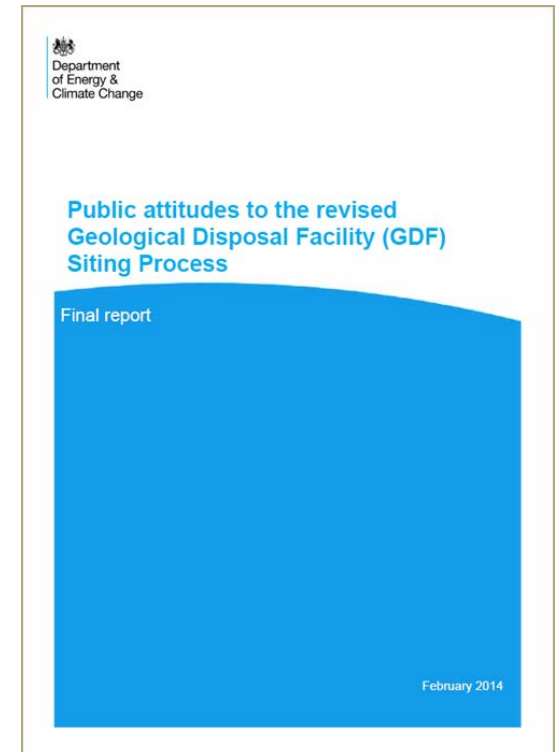
Source: Ipsos MORI





Learning lessons

- Government remains committed to geological disposal
- Confident in overarching programme
- Reflected on experience of the process to date
- Held a Call for Evidence in May/June 2013
- Consultation on revised siting process launched
12 September 2013





Geological disposal: roles and responsibilities



Key

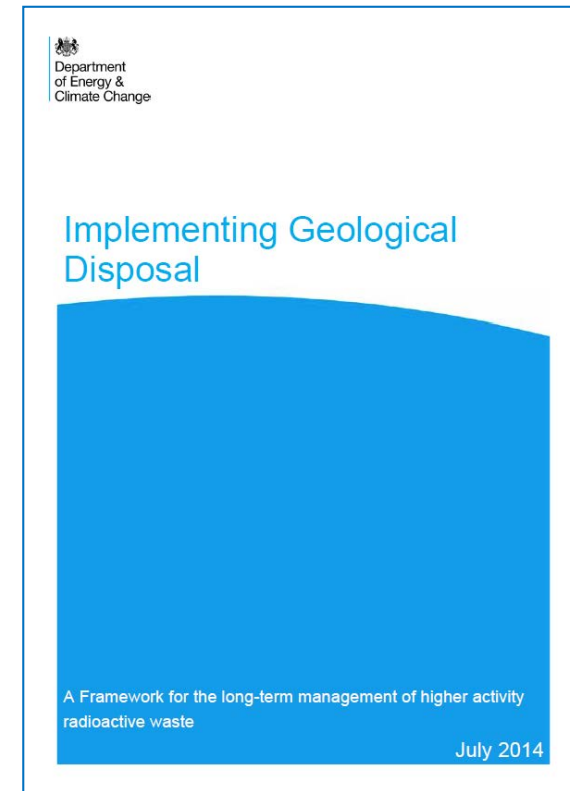
- **Communities**
Sit at the heart of this process – they can talk to Government and the developer throughout. A geological disposal facility (GDF) cannot proceed without community support.
- **Government**
Owns the policy, sponsors the project and provides funding.
- **Regulators**
Independent bodies will only authorise construction and operation of a facility if the developer can demonstrate that it will be safe, secure and the environment will be protected.
- **Developer**
Responsible for designing, building, operating and closing a facility safely.
- **Committee on Radioactive Waste Management (CoRWM)**
Provides independent advice to Government and scrutiny on radioactive waste management.





Learning lessons and consulting

- 2014 White Paper *Implementing Geological Disposal*
- The White Paper takes into consideration what we've heard and describes a two year process that will:
 - Provide more information about geology
 - Clarify the planning process for a geological disposal facility
 - Answer important questions of detail about community representation and investment
- All of this is will happen before formal discussions between interested communities and the developer begin





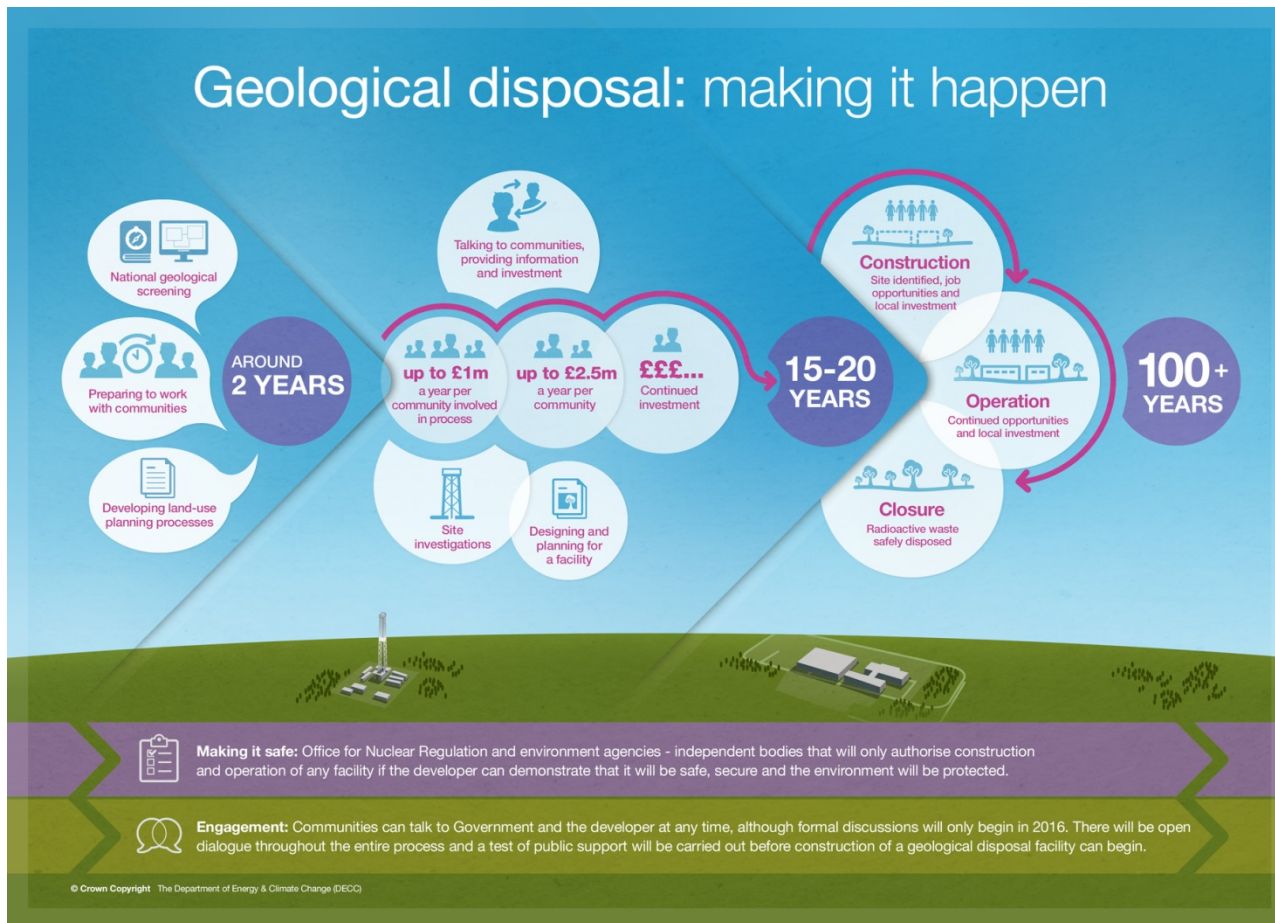
Working with Communities

- UK government is committed to working in partnership with engaged communities
- Recognition that all local representative bodies will need to have a voice in the process
- Final decision to build a GDF will only be taken if there is a positive test of public support
- Communities will have a right of withdrawal at any stage leading up to the test of public support
- UK Government will provide additional investment to a community that hosts the GDF
- Investment will also be made available early in the siting process
- £1m per community per year, rising to £2.5m for borehole investigations





Making it happen – current process





Low Level Waste Strategies

- Limited capacity, accelerated decommissioning and clean-up, new build and non-nuclear disposals
- Review of LLW policy and development of more strategic approach to waste management
- Dedicated engineered disposal facilities at LLWR and Dounreay
- Conventional landfill disposal
- Metal treatment
- Incineration
- Trans-Frontier Shipments for metal melting



Low Level
Waste
Repository,
copyright
LLWR
Limited



In summary

- The best way to implement the policy is through a nationwide consent based approach supported by effective communications and engagement
- White Paper 2014 – recognised that more detail is needed, more information up front
- Working with Communities policy



Thank you for listening

Questions?



<https://www.gov.uk/government/publications/implementing-geological-disposal>