

Oak Ridge's Plan to Address Excess Facilities



Alan Stokes

**Planning and Execution Division, Acting Director
Oak Ridge Office of Environmental Management**

Ron Slotke

**Project Services and Support
URS | CH2M Oak Ridge LLC**

Ken Harrawood

**Senior Director
Consolidated Nuclear Security, LLC**



Contaminated Excess Facilities are a large liability for Oak Ridge



- Home to more than 400 excess facilities totaling 6 million sq. ft.
- Contains more than a quarter of DOE's higher risk facilities
- Wide range of physical, chemical, and nuclear hazards
- Comingled with critical infrastructure supporting ongoing national security and research missions
- Risks increase as facilities age



Alpha 4



Interior of Biology Complex

Oak Ridge is planning to address the excess facility liability



- Developed a comprehensive cost and schedule plan to cleanup Y-12 and ORNL in 2007
 - \$9 – \$14B effort over 25 years starting in 2010
 - Made initial progress with ARRA funds
- Updated plan in 2013
 - \$8 - \$13B over 30 years starting in 2018



Excess Facilities at Y-12



Excess Facilities at ORNL

Near-Term Focus on Risk Reduction Activities



- Near-term objectives are clear
 - Characterize and abate high hazards
 - Stabilize buildings to reduce risks and future cost of demolition
- Conducting engineering studies and prioritizing emerging maintenance actions
- Received funding in FY16 to jump start our efforts
- Planning on same level of funding in FY17



Building 3026



Colex Equipment

7500 Homogeneous Reactor Experiment Facility - **COMPLETE**



Combustibles
Removed!



3026 Hot Cell Risk Reduction



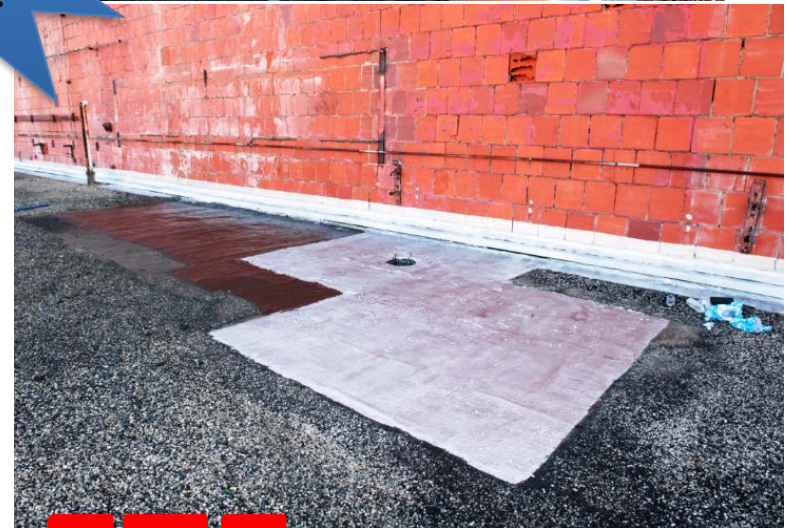
Hot cell
sealed &
pedestals
capped!



Y-12 - Alpha-4 Roof Repair



Roof
Repaired!

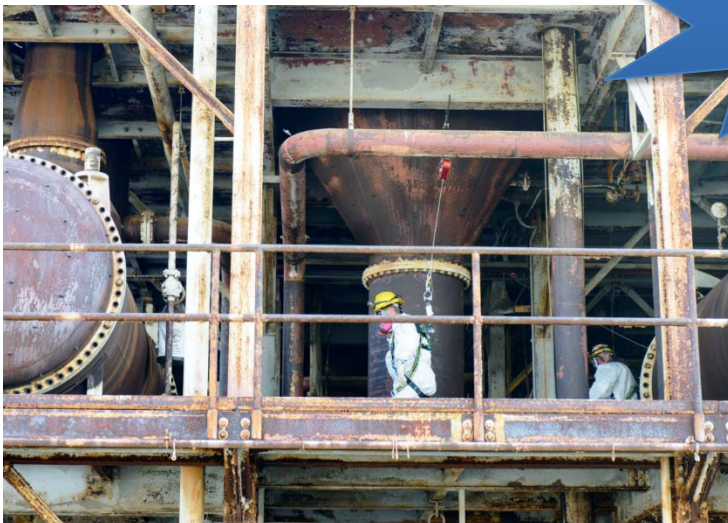


COMPLETE

COLEX West - In Progress



Started
Deactivation
activities!



Biology Complex



Completed
Characterization!

Have identified projects to begin in FY17



- Demolition of two Biology Complex facilities at Y-12
- Hazard Abatement in Building 7500 at ORNL
- Risk Reduction activities at the Molten Salt Reactor Experiment at ORNL

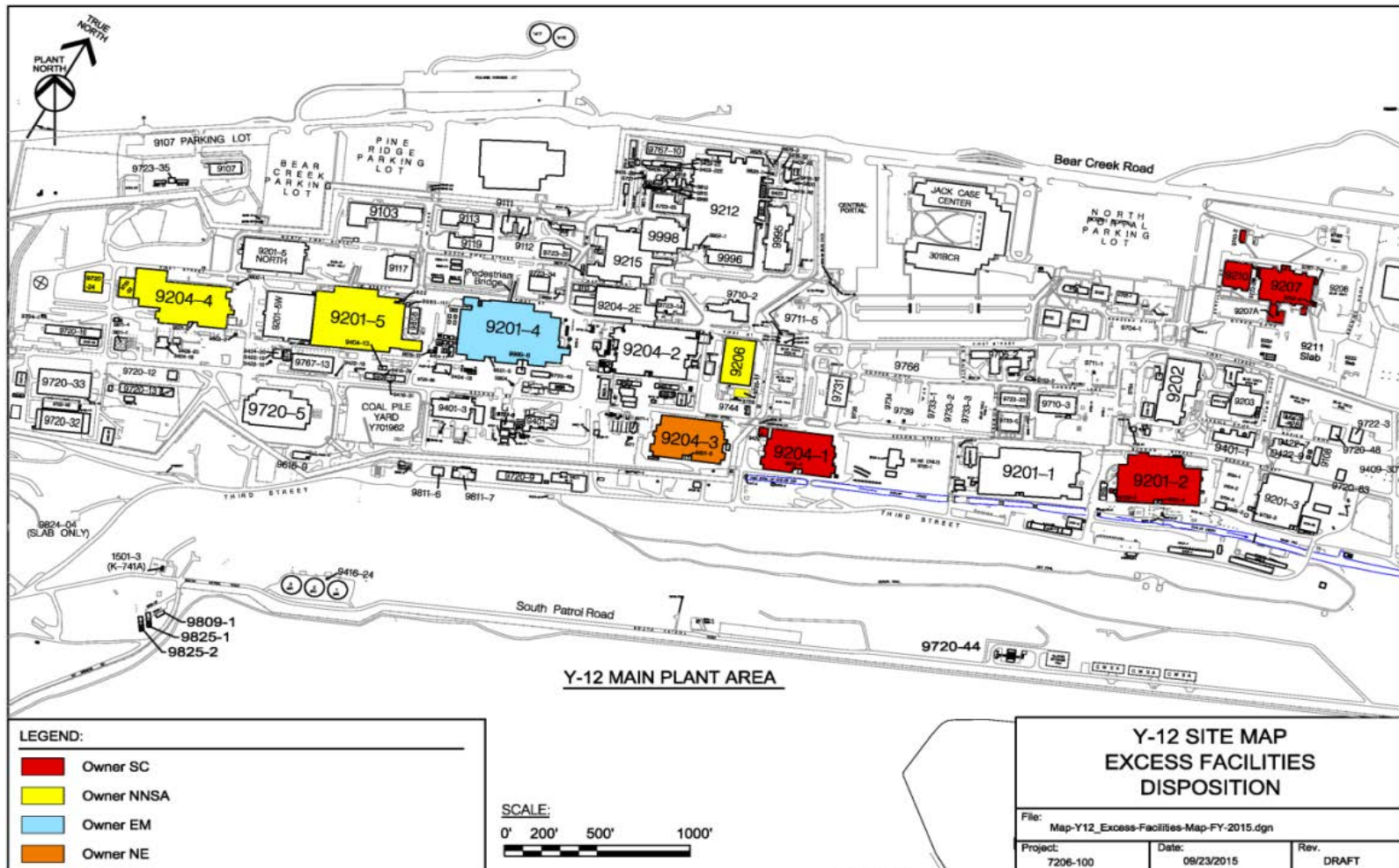


Building 7500



MSRE Salt Drain Tanks

Four different program offices have high-risk facilities at Y-12



Ongoing collaboration between EM and other Program Offices (NNSA, NE, and SC)



- EM-HQ walkdown of high risk facilities in September 2016
 - Follow-on to detailed walkdown in 2008
 - Identified and/or confirmed activities to be completed prior to facility D&D
 - Reviewed progress since last walkdown

Increased FY16 funding allowed risk reduction work in 14 of 20 facilities



- Significant roof repairs to high-risk facilities
 - Alpha-5
 - Beta-4
 - Building 9206



Ongoing risk reduction work in FY17 to position facilities for ultimate D&D



- Several RFPs for projects in Alpha-5 and Beta-4
 - Legacy material removal
 - Draining of oils
 - Removal of mercury contaminated systems



Alpha-5

D&D of non-process contaminated facilities being completed by NNSA



- Non-process contaminated facilities
 - Currently 65 facilities
 - Includes office trailers, warehouses, and guard towers
 - Plan to D&D all facilities by 2023



Buildings 9111 and 9112