



Markers: what for and how? Reflections

Jean-Noël Dumont
Special Adviser, Andra

Waste Management Conference
Phoenix, Arizona, 6 March 2017

Why and what for ?

How?

The French case

Lessons from the past

Tsunami warning stone,
Japan

Phenician sarcophagi

Pyramids



Markers can...

Warn of a potential danger

Alert of a danger

Inform

But they also might...

Raise curiosity

Raise safeguard issues

Not enough information

Too much information

Could they...

Point to another place which is not the repository?

Point to more information?

Prevent from intrusion without referring to the existence of the repository? (e.g. esthetic value)



Why and what for ?

How?

The French case



Year 6400...

A...ND...RA
What is that?

Maybe a magician of
the 20th or 21st
century...

The issue of language

Languages evolve and die

Rosetta stone?

You need to know very well at least one of the languages

Pictograms?

May be understood by people from different languages
But are they universal?

Pictograms are not always self-explanatory



Pictograms are not always self-explanatory



Picture of falling man does not depend on culture

Triangle sign of danger (CAUTION!) is purely conventional, though widespread

Why and what for ?

How?

The French case

Markers are not required by the regulator, nor part of the « Reference Solution »

But they are considered in the Memory Program, through:

Art

Archeology of landscape

Materials

Marker project for the Manche repository

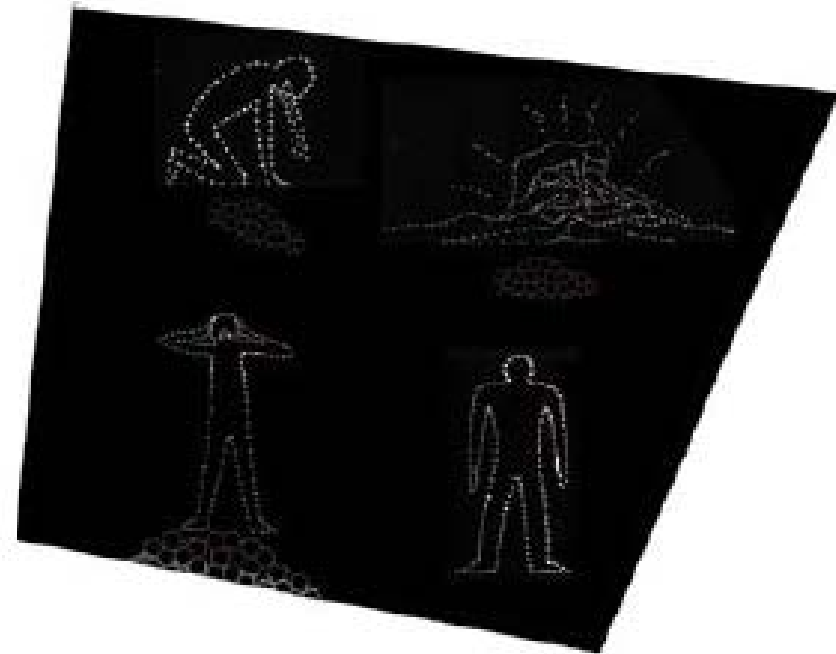
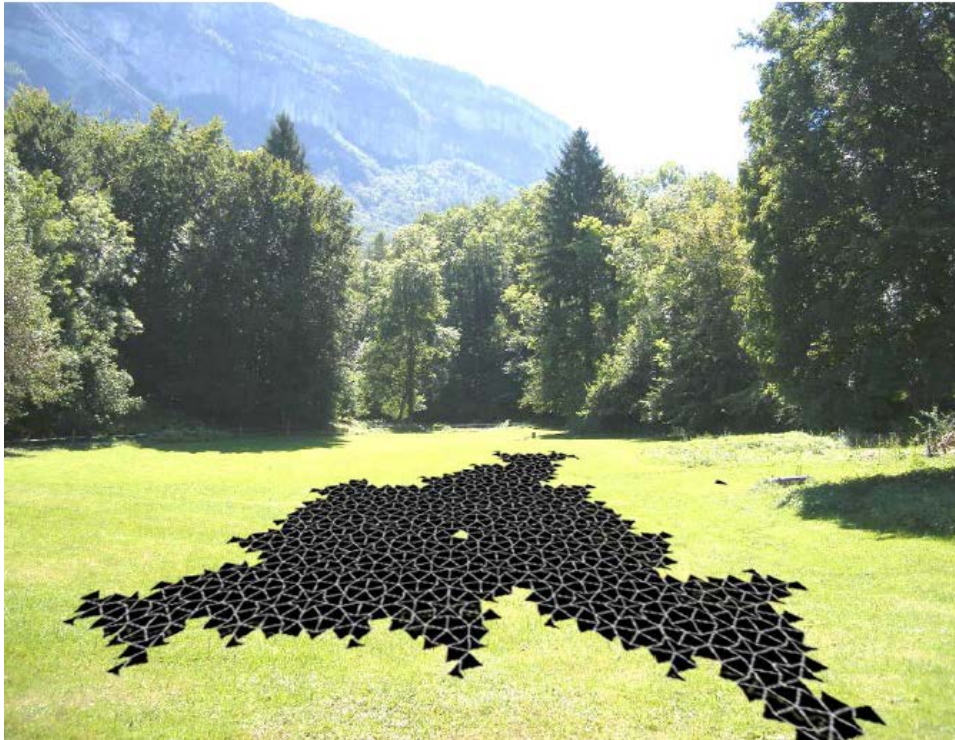
Cécile Massart



Prométhée oublié (forgotten Promethea)

Alexis Pandelé

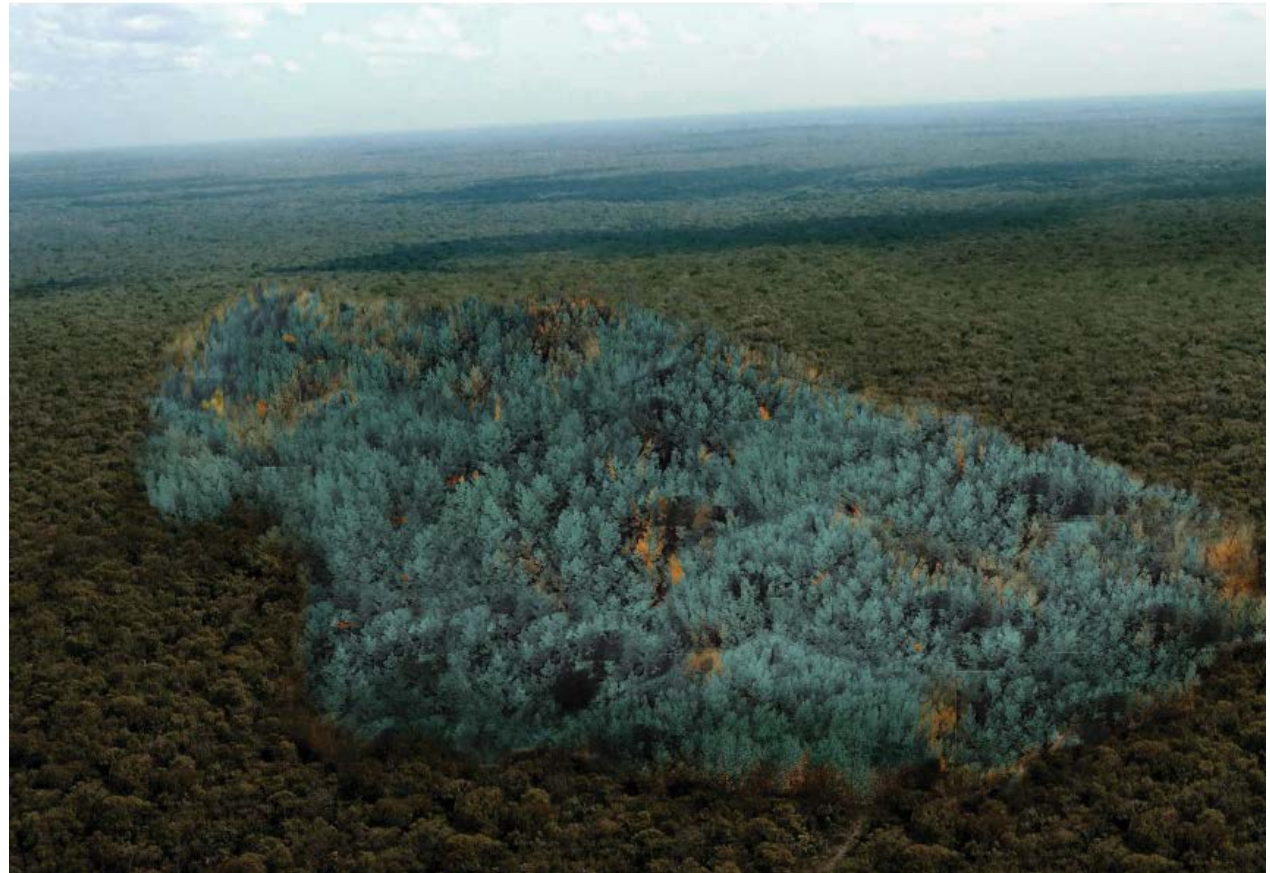
Andra artistic contest
Art et Mémoire 2015



La Zone Bleue *(The Blue Zone)*

Stefane Perraud –
Aram Kebabdjian

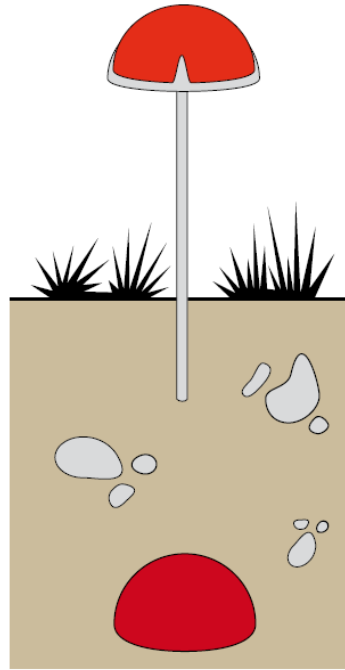
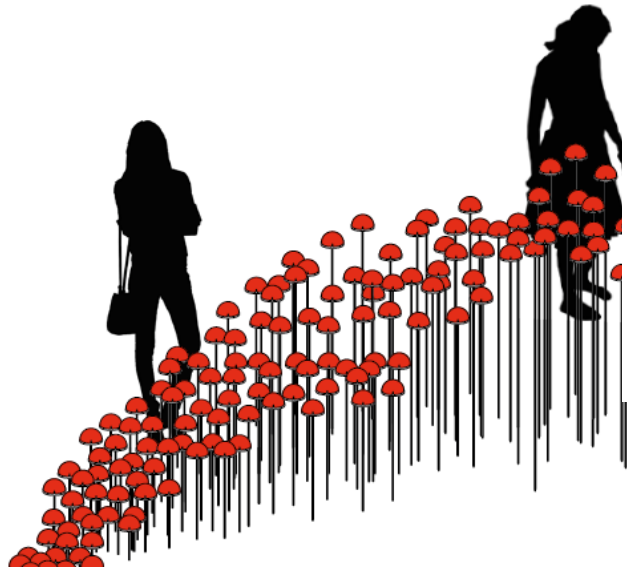
Andra artistic contest
Art et Mémoire 2015



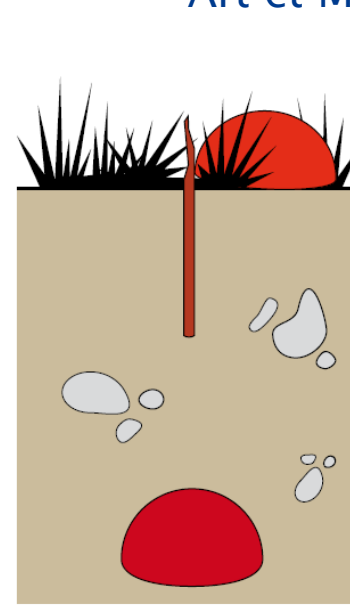
Cloud in Cloud out

Alice & David Bertizzolo

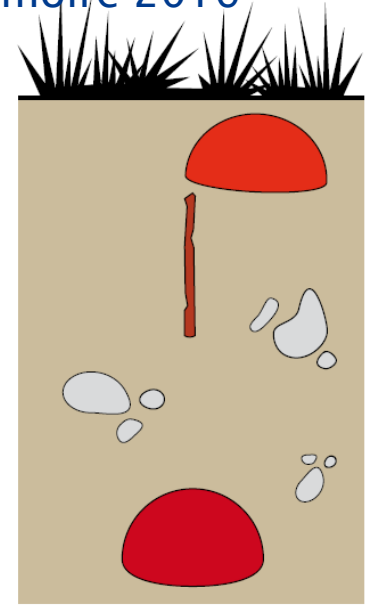
Andra artistic contest Art et Mémoire 2016



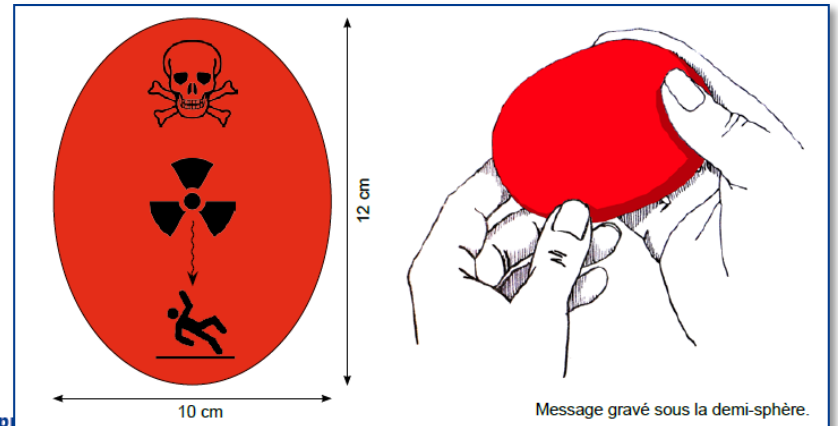
Aujourd'hui.



Dans 100 ans.



Dans 500 ans.



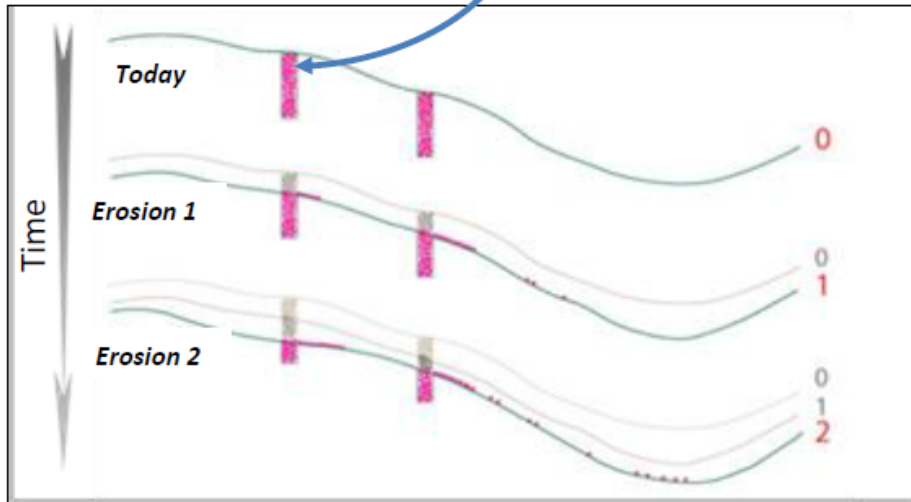
Message gravé sous la demi-sphère.

Small markers for correct interpretation of the landscape D.Harmand and J. Brulhet, Constructing Memory Conference



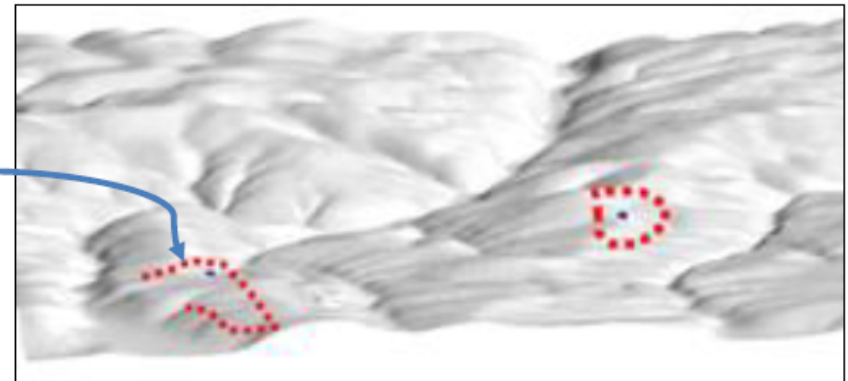
1) The material which could be used to mark the Cigeo site

- Small engraved pieces
- Included in some geologically exotic material (for example : siliceous sand / limestone plateau)



2) The marks design

The material could be included in some few meters long drill holes,
This concept allows pieces distribution at surface over a long time period
despite natural erosion of the site



3) Spatial distribution of the marks in the landscape

Markers could be distributed around the main Cigeo surface facilities

Materials research using clay (argilite) from the host rock

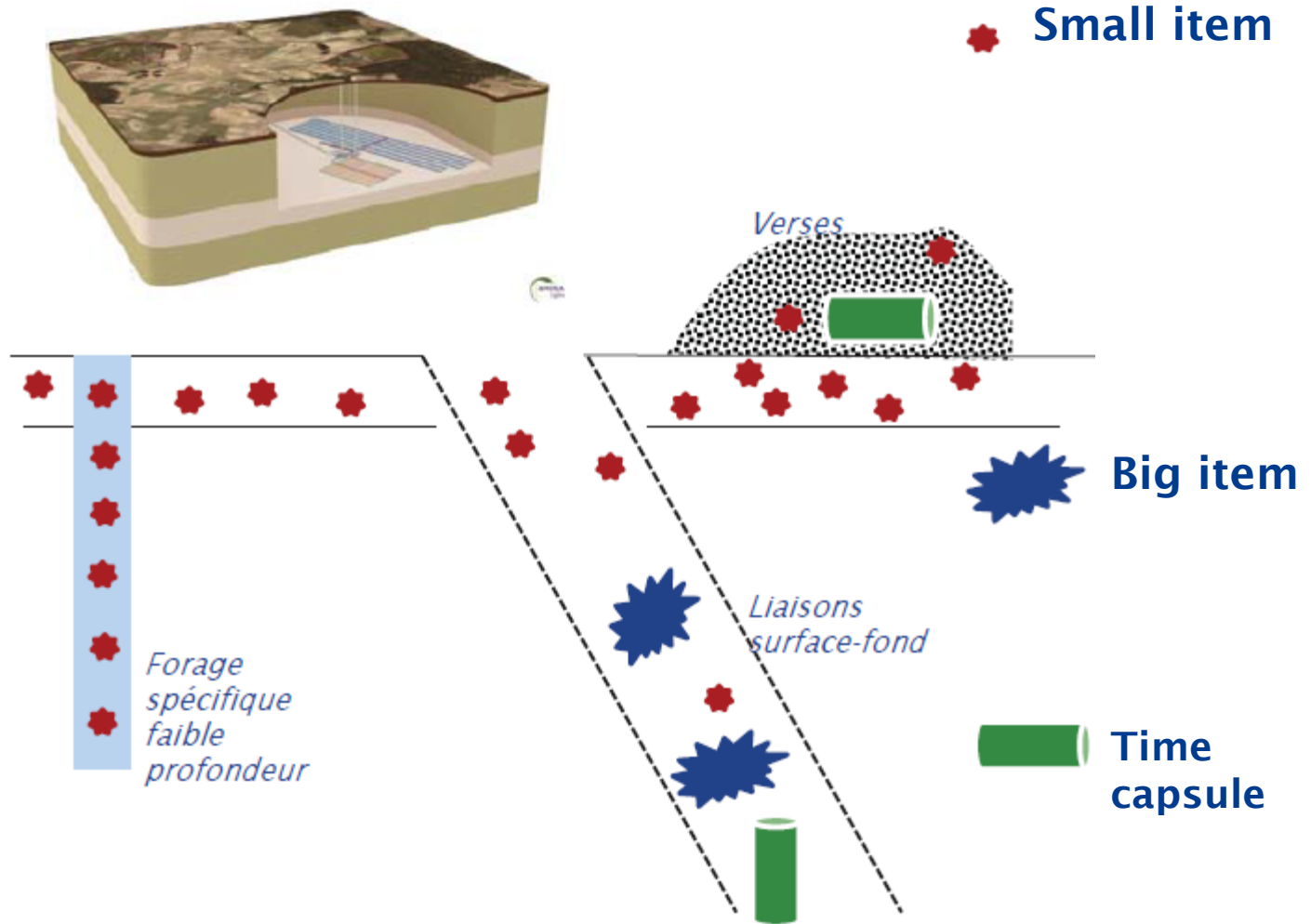
ENSCI-ENSIL Limoges



Geopolymer



Glass



Thank you for your attention!