



U.S. DEPARTMENT OF
ENERGY

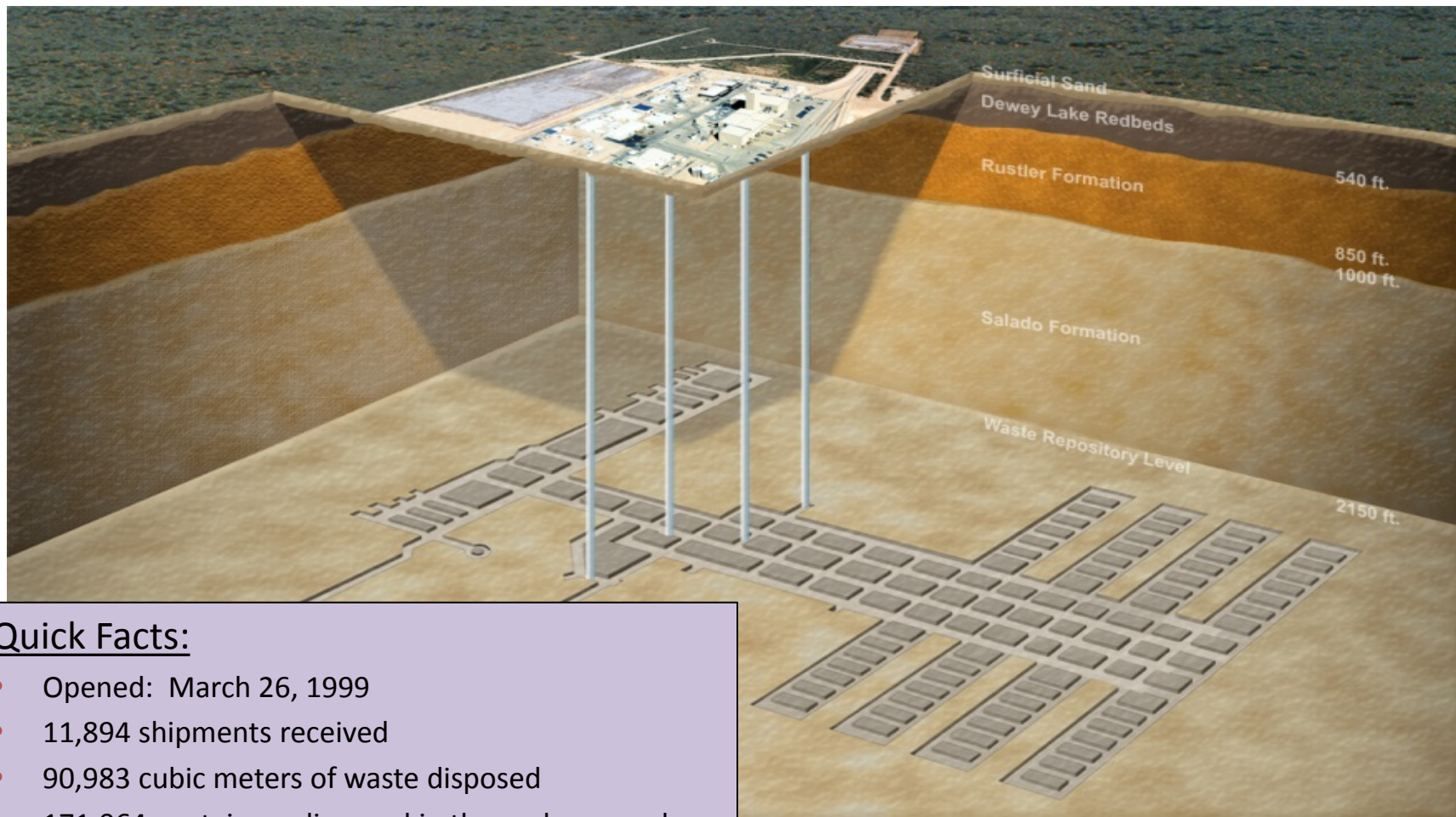
OFFICE OF
**ENVIRONMENTAL
MANAGEMENT**

WIPP Recovery “It’s all about safety”

Jim Blankenhorn
NWP Recovery Manager
Nuclear Waste Partnership, LLC

March 16, 2015

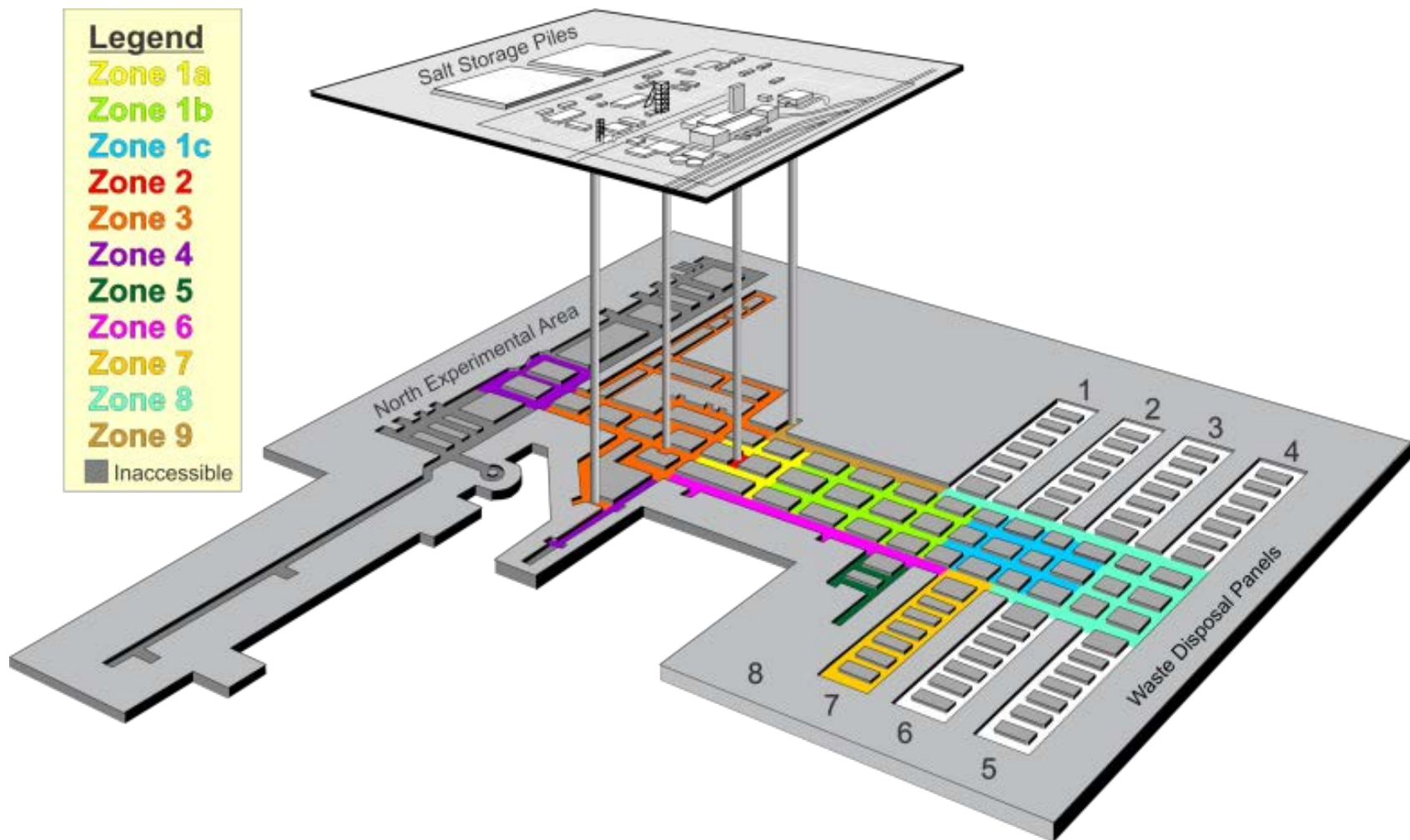
Waste Isolation Pilot Plant



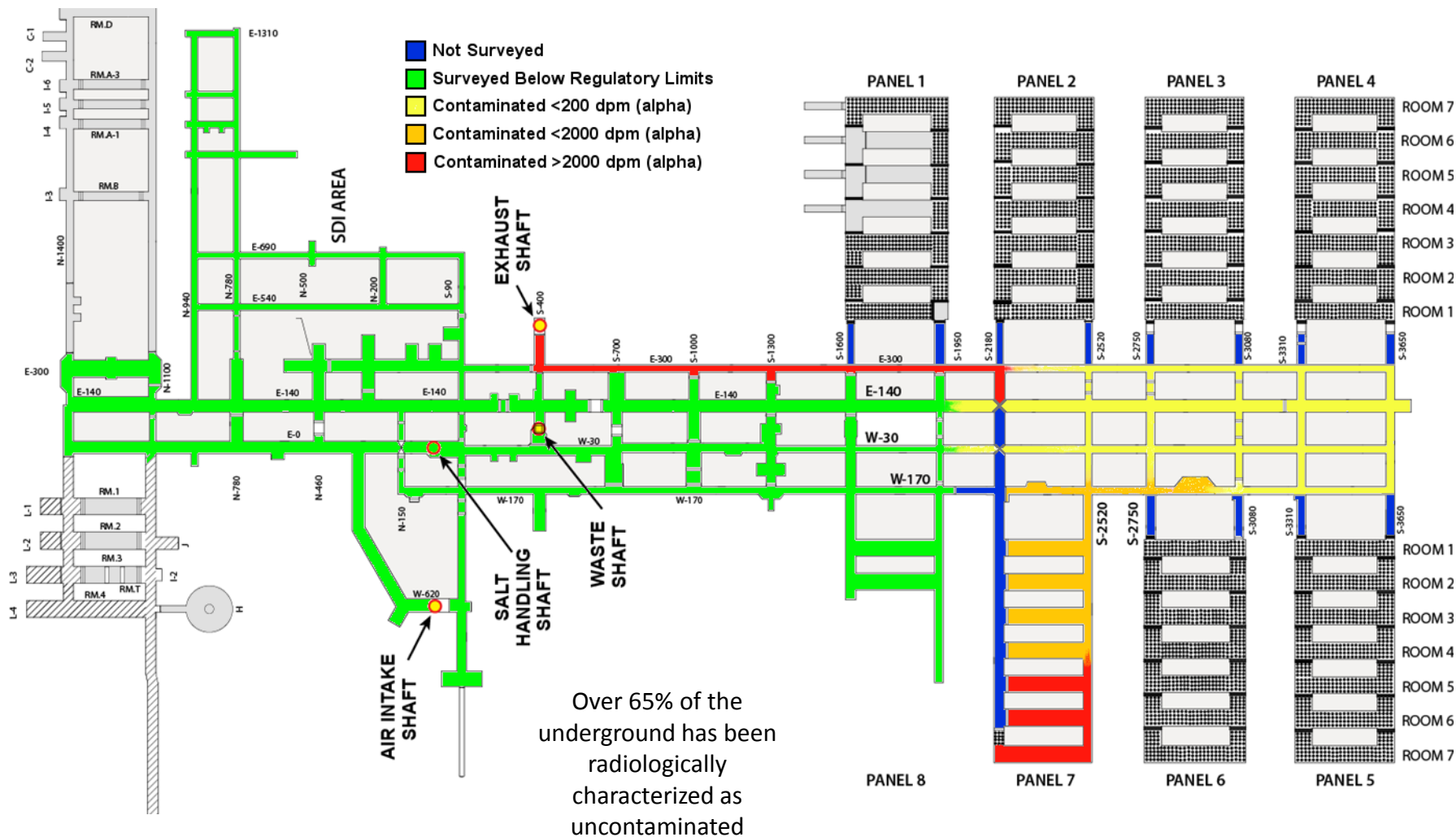
Quick Facts:

- Opened: March 26, 1999
- 11,894 shipments received
- 90,983 cubic meters of waste disposed
- 171,064 containers disposed in the underground

Recovering the Underground



Radiological Rollback

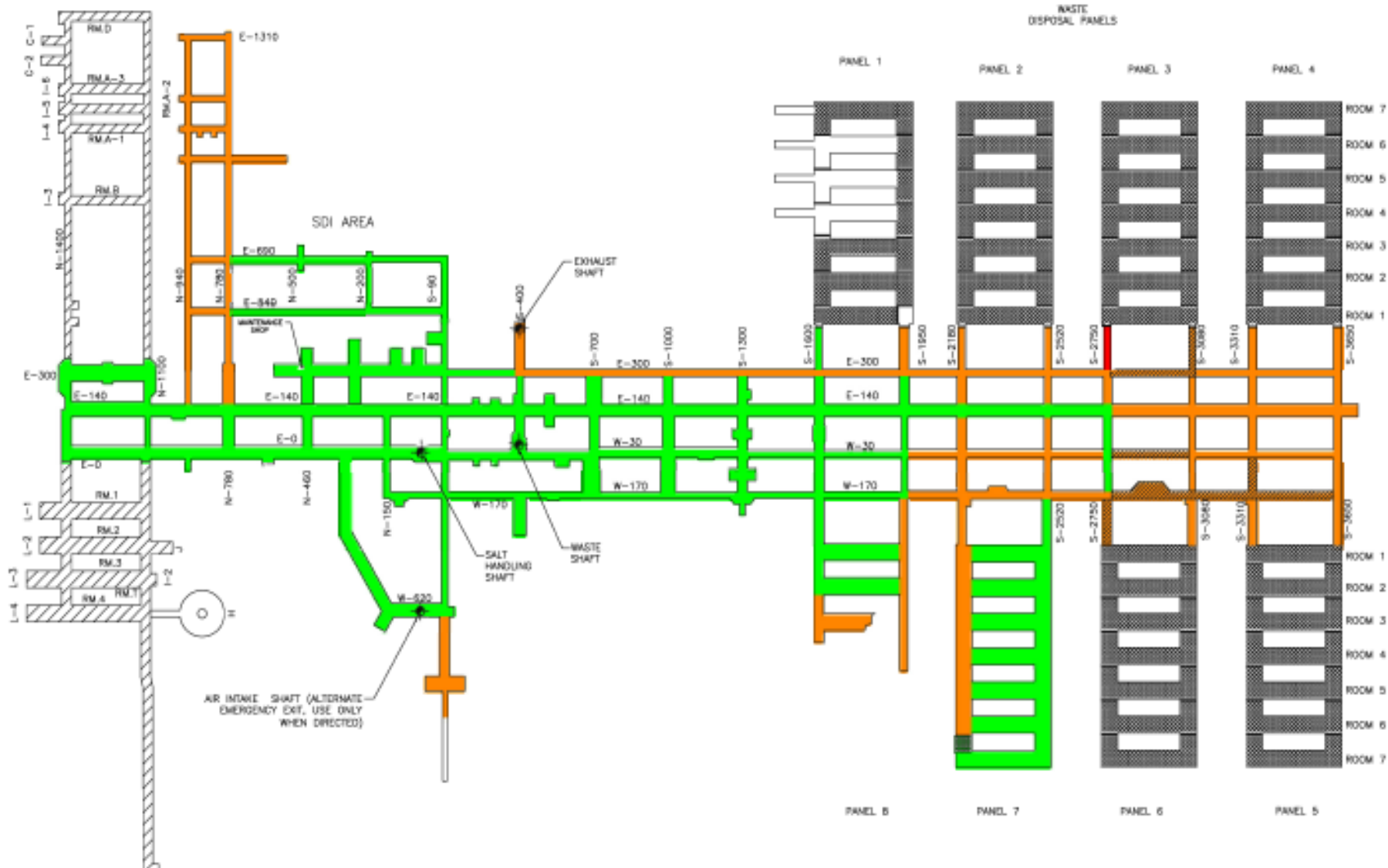


Bolting Operations



- Bolting in both contaminated and uncontaminated areas
- More than 1,500 bolts installed since bolting resumed 11/14
- Catch-up bolting complete in 68% of the underground
- Bolting in contaminated areas to support Panel 6 interim closure

Ground Control (Bolting)



Contamination Mitigation



- Equipment decontamination for bolting and initial closure activities completed
- Contamination mitigation work in the WIPP underground began February 5, 2015

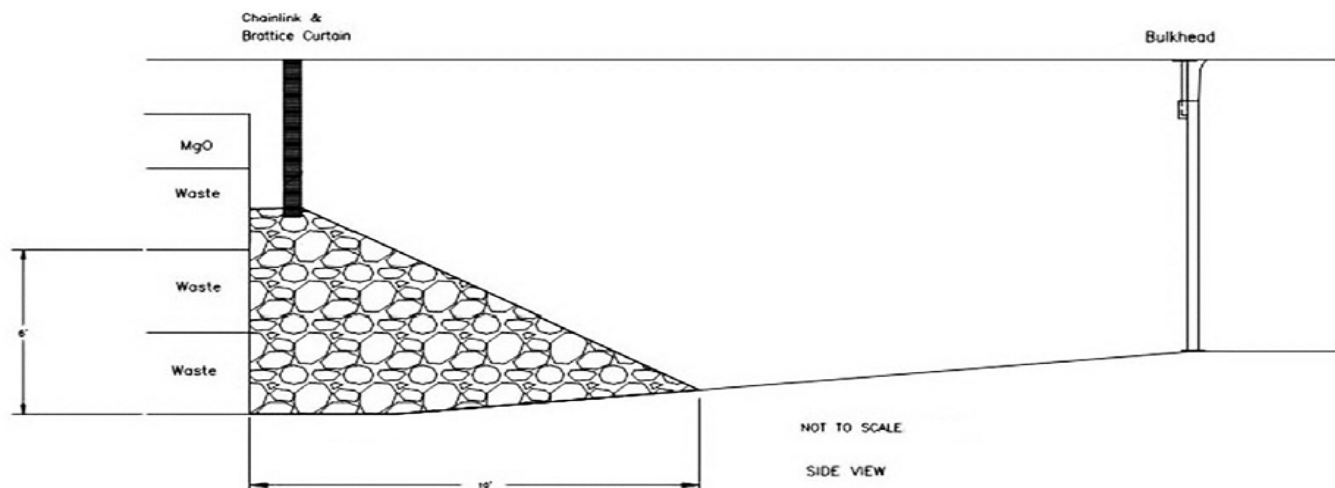


Panel Closure Plans

- Closure of Panel 6 and Panel 7
Room 7 remains a high priority
- NMED approved the initial
closure plan for Panel 6
 - Includes chain-link, brattice
cloth, run-of-mine salt and
bulkheads



Steel Bulkhead



Project Reach

- Video/photo mapping completed in January 2015
- Visual evidence supports a single drum (LANL68660) as the source of the radiological release event
- AIB has released Panel 7



Underground Ventilation

Interim Ventilation

- Fabrication of HEPA skids and fans underway
- Will add additional 54,000 cfm of filtered airflow

Supplemental Ventilation

- Fan procurement initiated
- Clean air split – exhaust via salt shaft
- Additional bulkheads required

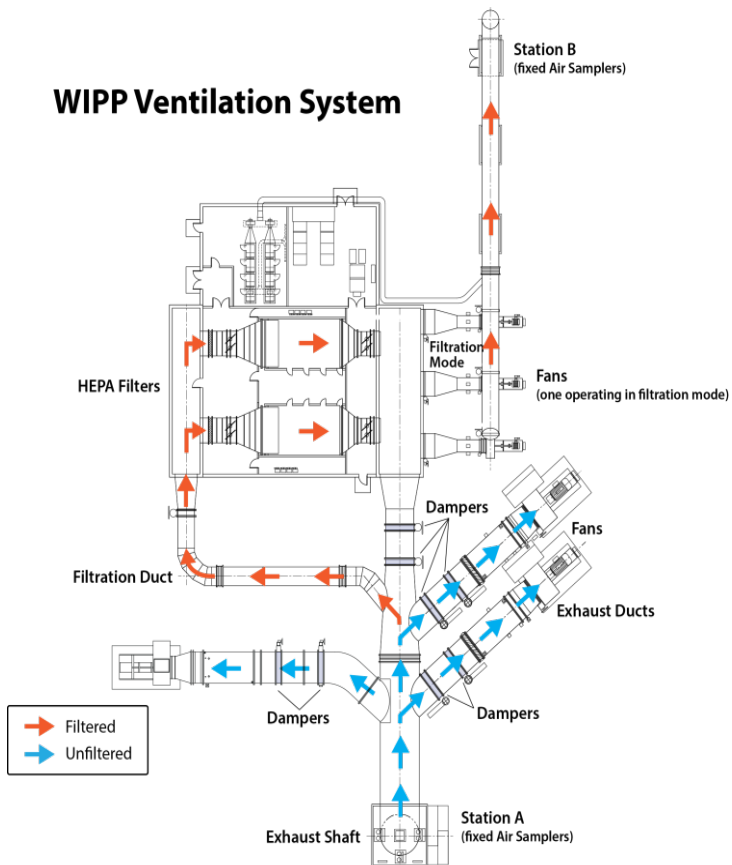
Permanent Ventilation

- Following DOE 413.3B critical decision (CD) process – CD-0 completed
- Alternatives Analysis complete
- Conceptual Design Review in process



Interim Ventilation

WIPP Ventilation System



WIPP Recovery Priorities

(Re-establishing Safety)

- Establishing safety infrastructure, culture and environment
- Ensuring safety and health of the workforce and the public
- Protecting the environment and complying with applicable regulations
- Executing the Recovery Plan
- Maintaining a trained and qualified workforce
- Restoring confidence and communications with the public and stakeholders