

D&D Planning and Execution Approaches

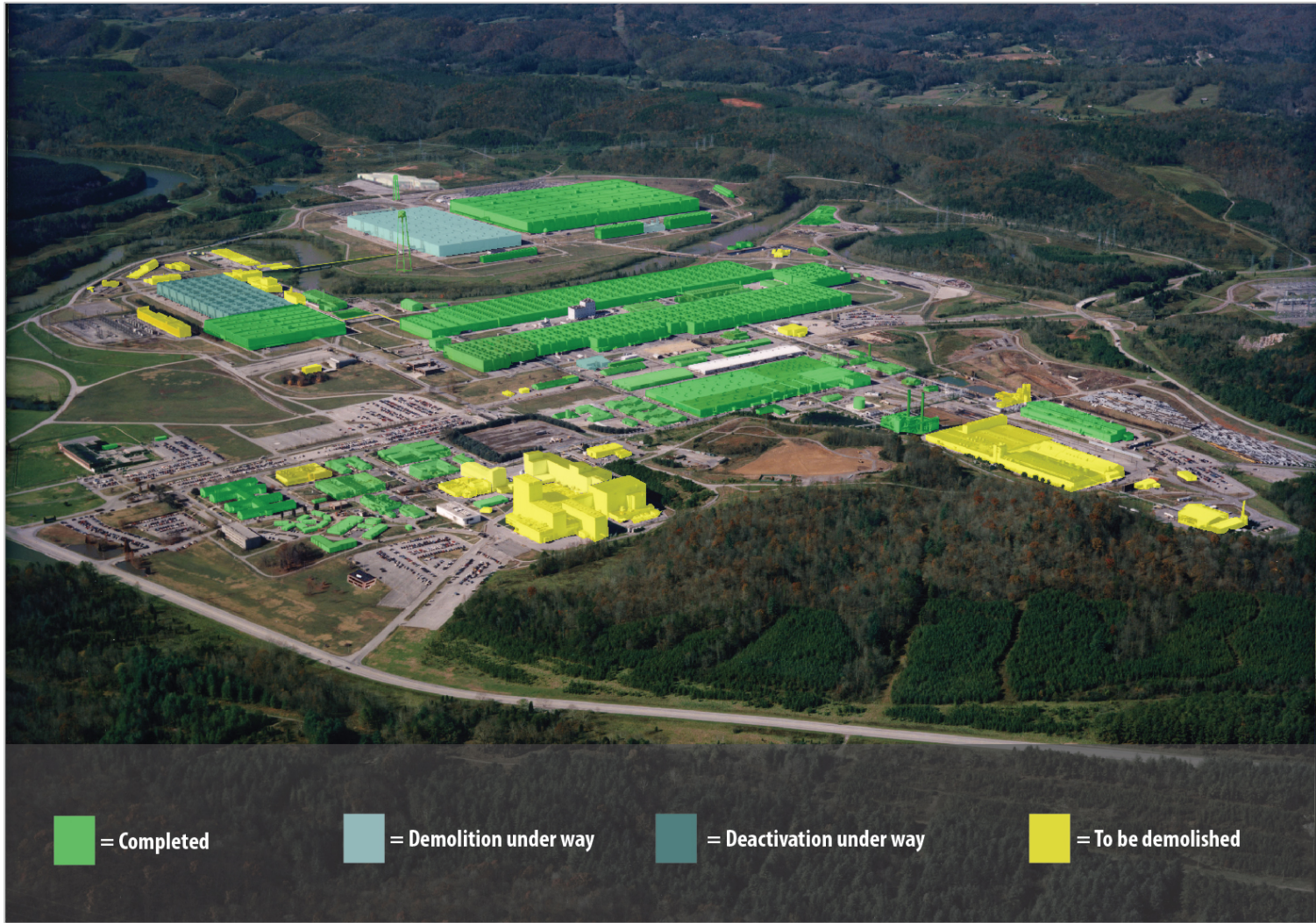


UCOR
URS | CH2M
Oak Ridge LLC



Wendy Cain
ETTP Portfolio Federal Project Director
DOE-Oak Ridge Environmental Management

Current Cleanup Status

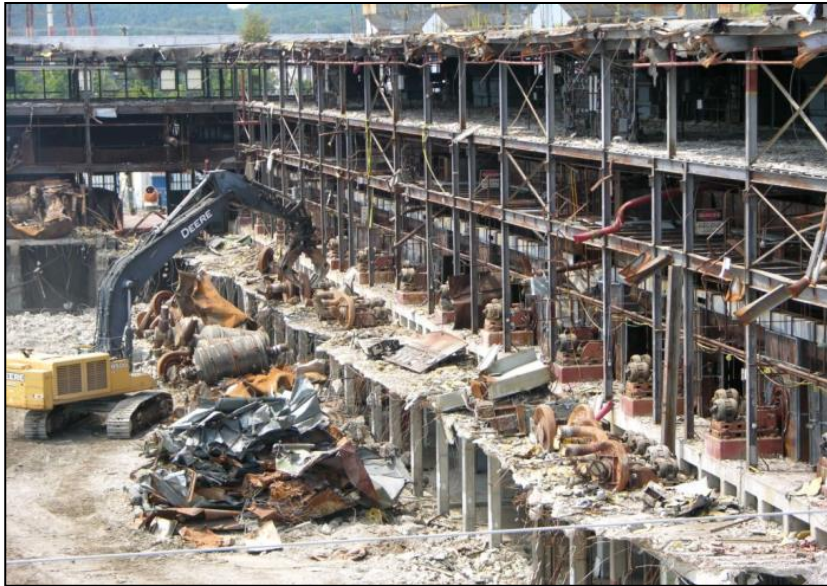


Safety – It's Foundational

- Target Zero
- Integrated Safety Management System and Work Control
- Stop Work Responsibility
- Continuous Improvement
- Conservative Decision Making
- Safety Conscious Work Environment
- Communicate
- Do Less Work



K-25 Building Demolition Complete



- December 2013 - Structural demolition complete
- March 2014 – Final debris shipment to EMWMF
- June 24, 2014 – All contract scope complete
- January 9, 2015 – CD-4 approved



K-31 Building Demolition



- Accelerating K-31 Demolition was enabled by:
- Completing K-25 ahead of schedule
 - Avoiding K-25 costs associated with later completion
 - Having trained, efficient work crews available

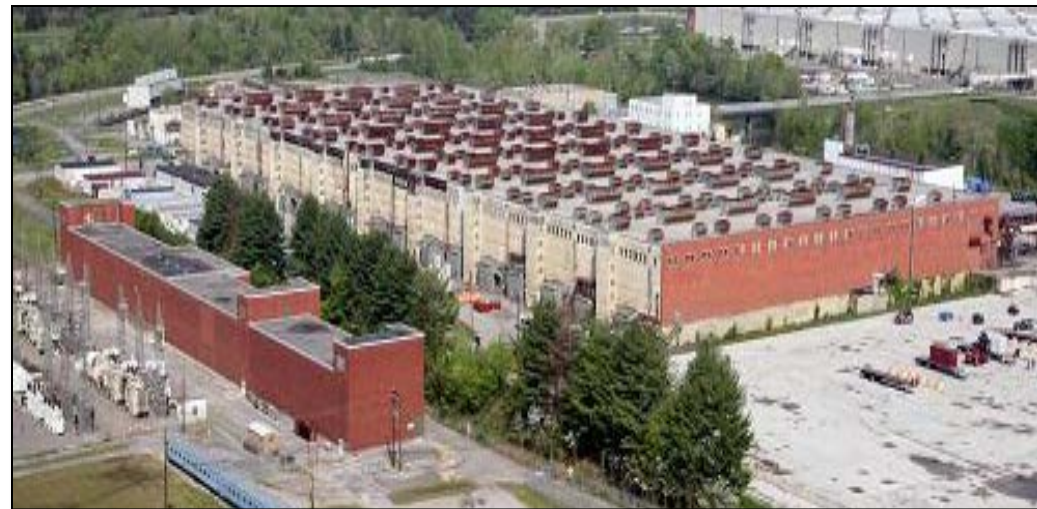
Productive progress toward ETTP vision while awaiting K-27 to be demolition-ready

- CD-2/3 Approved April 28, 2014
- Structural demolition began October 8, 2014



Accelerating K-27 Building Activities

- Accelerate Characterization activities for hazard identification, regulatory process, and waste acceptance
- Perform Deactivation activities in parallel with demolition planning
 - Complete “Cold and Dark”
 - Attain Criticality Incredible
 - Demolition Ready
- Complete DOE Order 413.3B activities for CD-2/3 approval



Deactivation Approach – Cold & Dark

- Isolate utilities and remove energy sources
- Install temporary power and lighting
- Install life lines and grip strut
- Perform asbestos abatement
- Drain oil
- Remove listed waste



Deactivation Approach - Crit Incredible

- Duct Cutting - Access process piping
- Vent, Purge, Drain, and Inspect – Document visual inspection of all ≥ 3 " diameter PGE/piping
- NDA measurement and sampling



Deactivation Approach - Crit Incredible

- High risk equipment removal and mining
- Foaming
 - Meets WAC subsidence requirements
 - Physical security
 - Immobilizes contaminants
 - Prevents water infiltration
- Criticality Safety independent verification
- Criticality Incredibility determination documented



Deactivation Approach – Demo Ready

- “Go Orange” marking
 - Easy identification for segregation during demolition
- Tabbung and unbolting of equipment
 - Cleaner piping cuts and easier equipment handling during demolition



“Go Orange” Marking



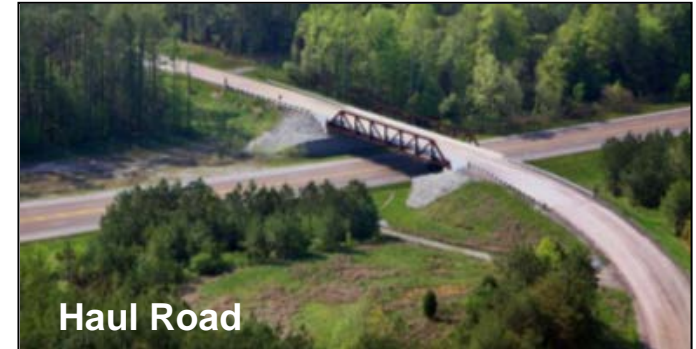
Unbolting Compressors & Converters

Demolition Approach



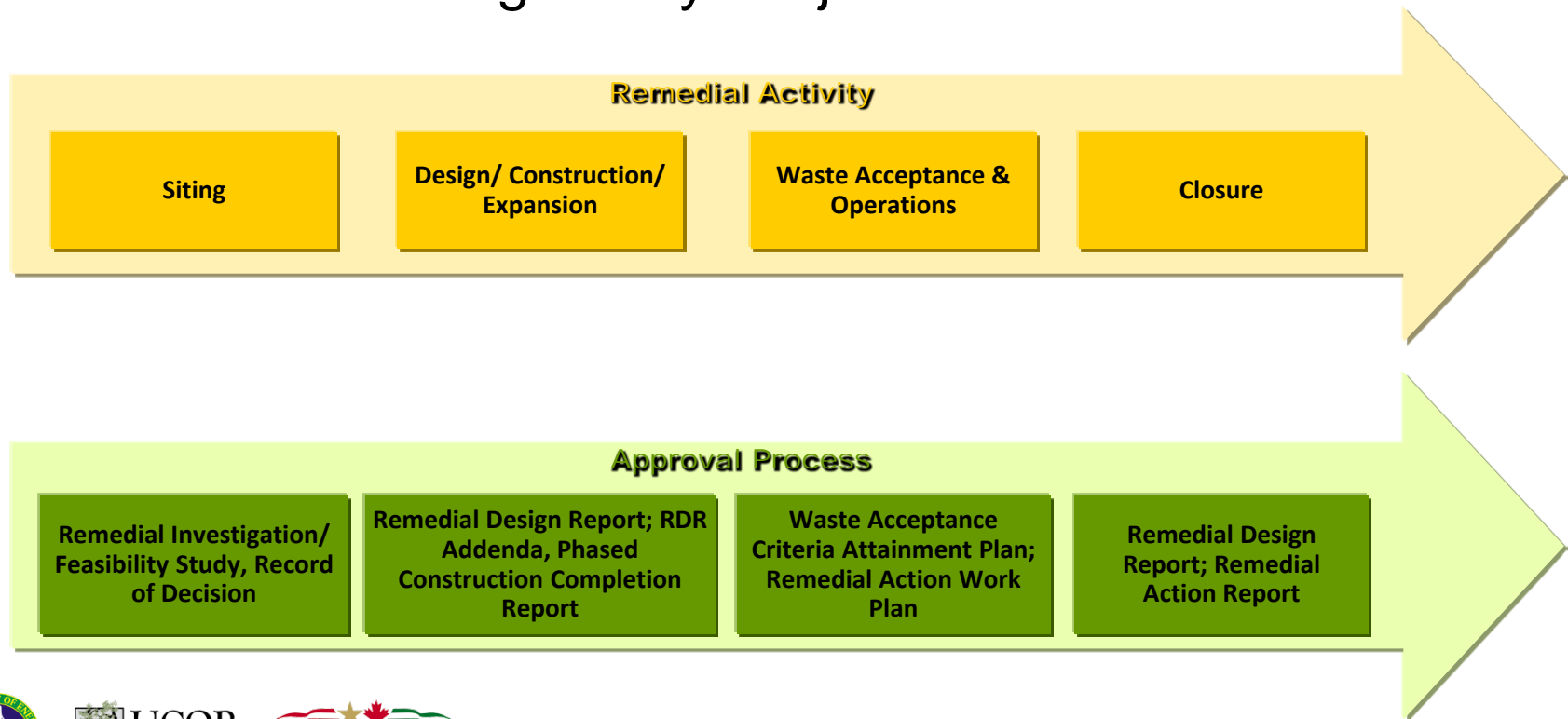
Waste Disposition Approach

- Onsite disposal facility received 86% of the K-25 waste generated
- Haul Road – reduced risk and increased efficiency with non-commerce transport
- Eliminate double handling
- Shipped waste is better than stored waste
- Converter disposal approach
- Reusable Compressor volute shipping containers



Regulatory Approach

- Formal Federal Facility Agreement (Tri-Party Agreement) review/approval process is implemented
- EPA and TDEC approval is required at each step
- Collaborative Regulatory Project Teams



Maintaining Momentum

- Continue to build on the success of completing the K-25 Project and progress on the K-31 Project
- Performance Excellence
 - Safety
 - Schedule
 - Cost
 - Incorporate lessons learned
- Partnering
 - Goal Alignment
 - Building Trust

