

CIGÉO

future French HW and IL-LL repository

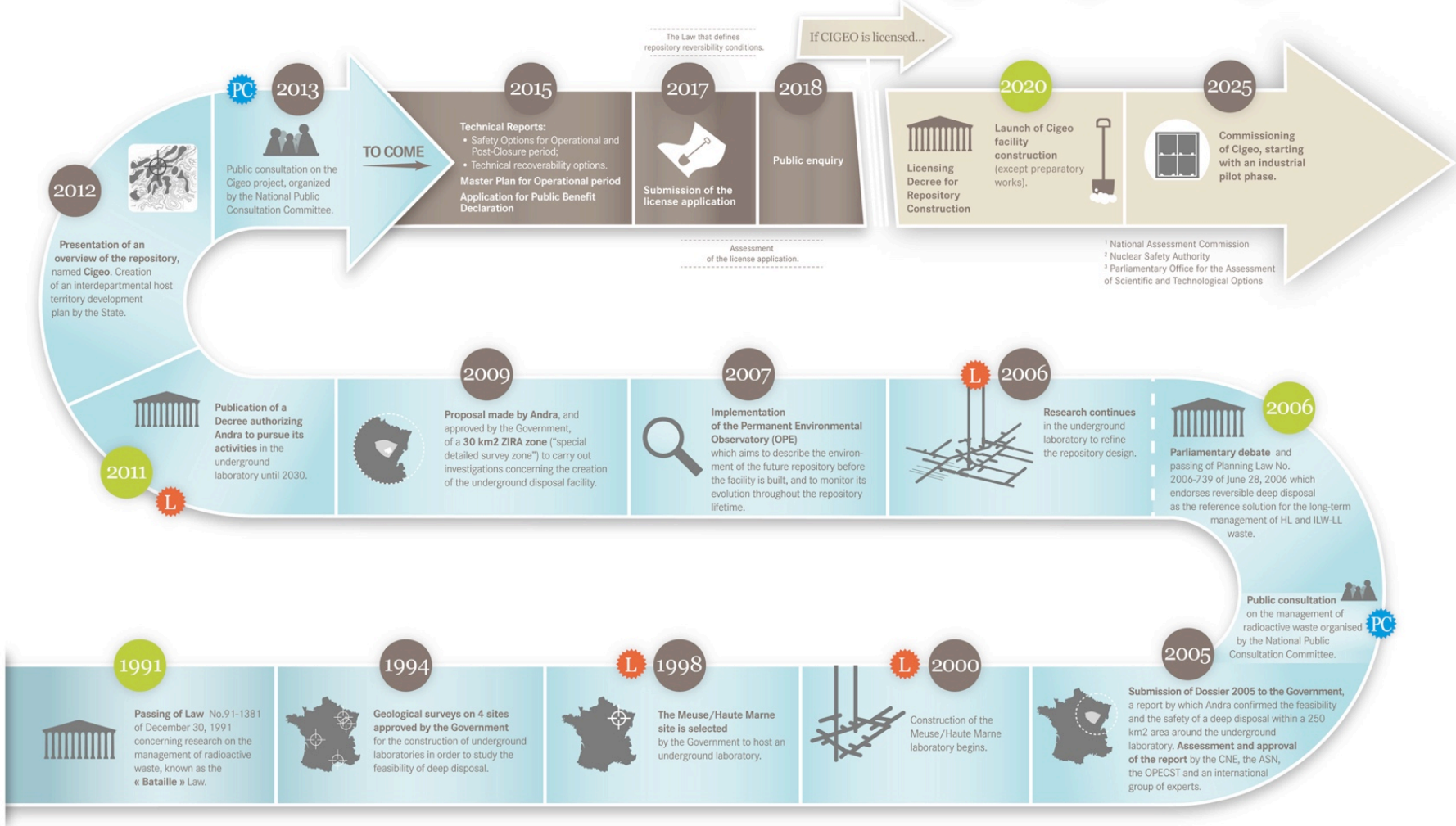
Pierre-Marie ABADIE
ANDRA -CEO





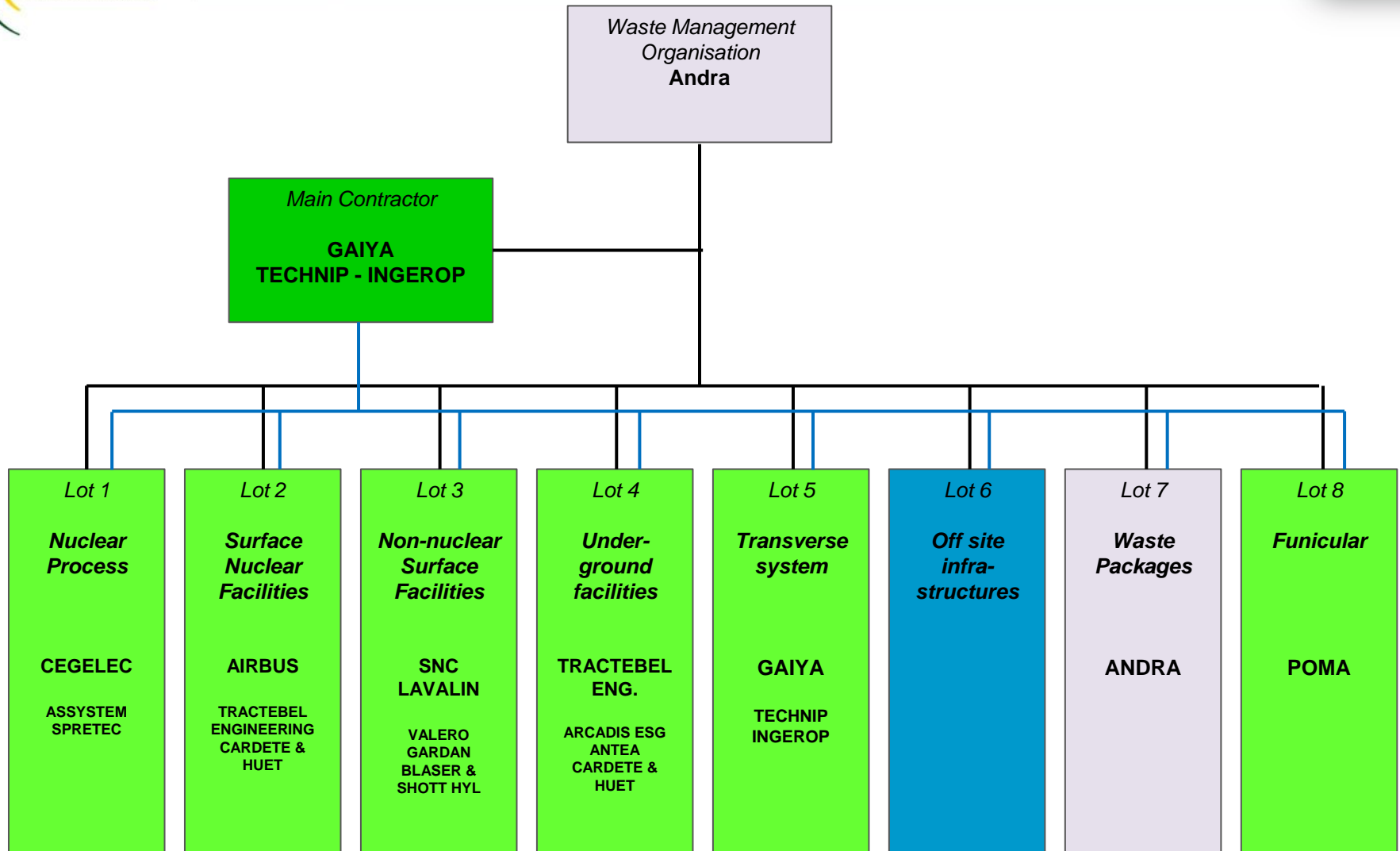
Cigéo : a unique project

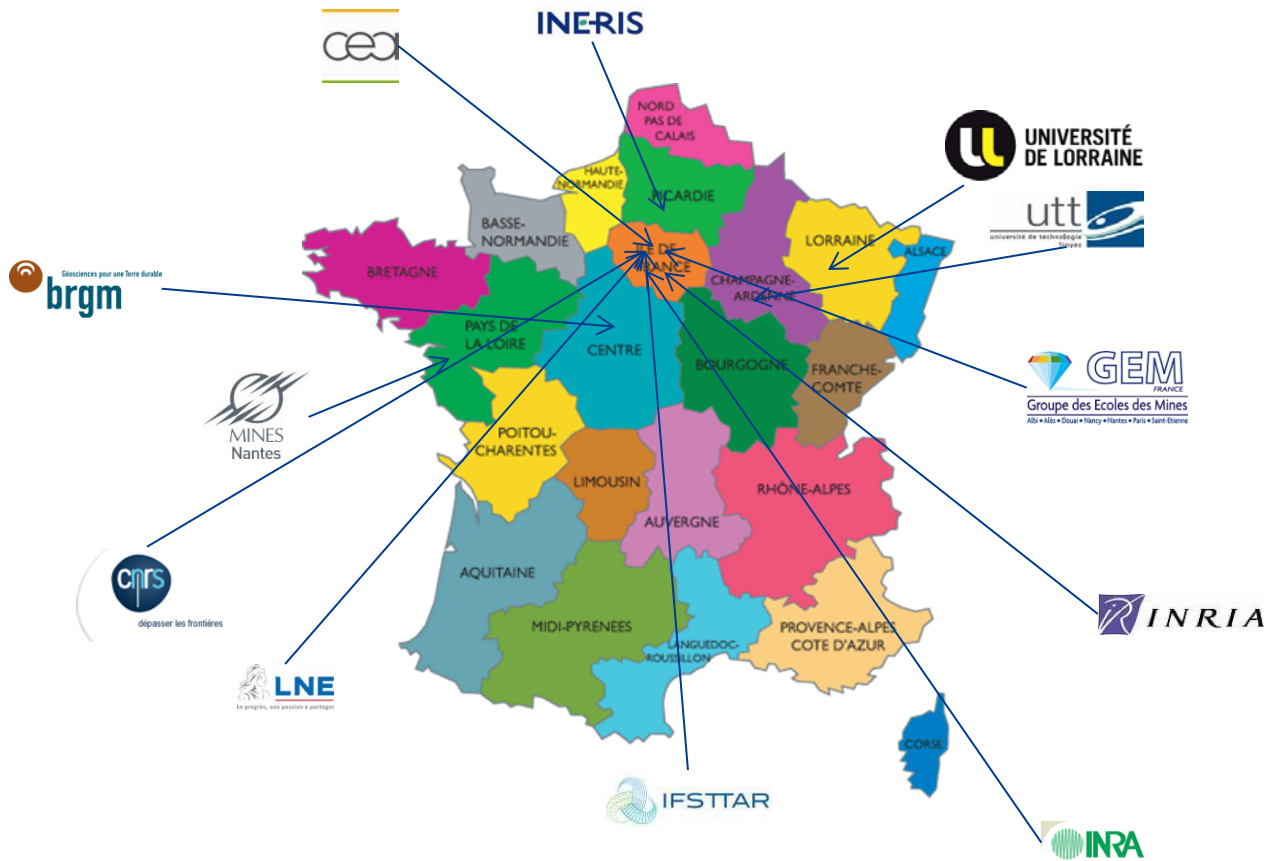
● LAW OR DECREE ● UNDERGROUND LABORATORY ● PUBLIC CONSULTATION



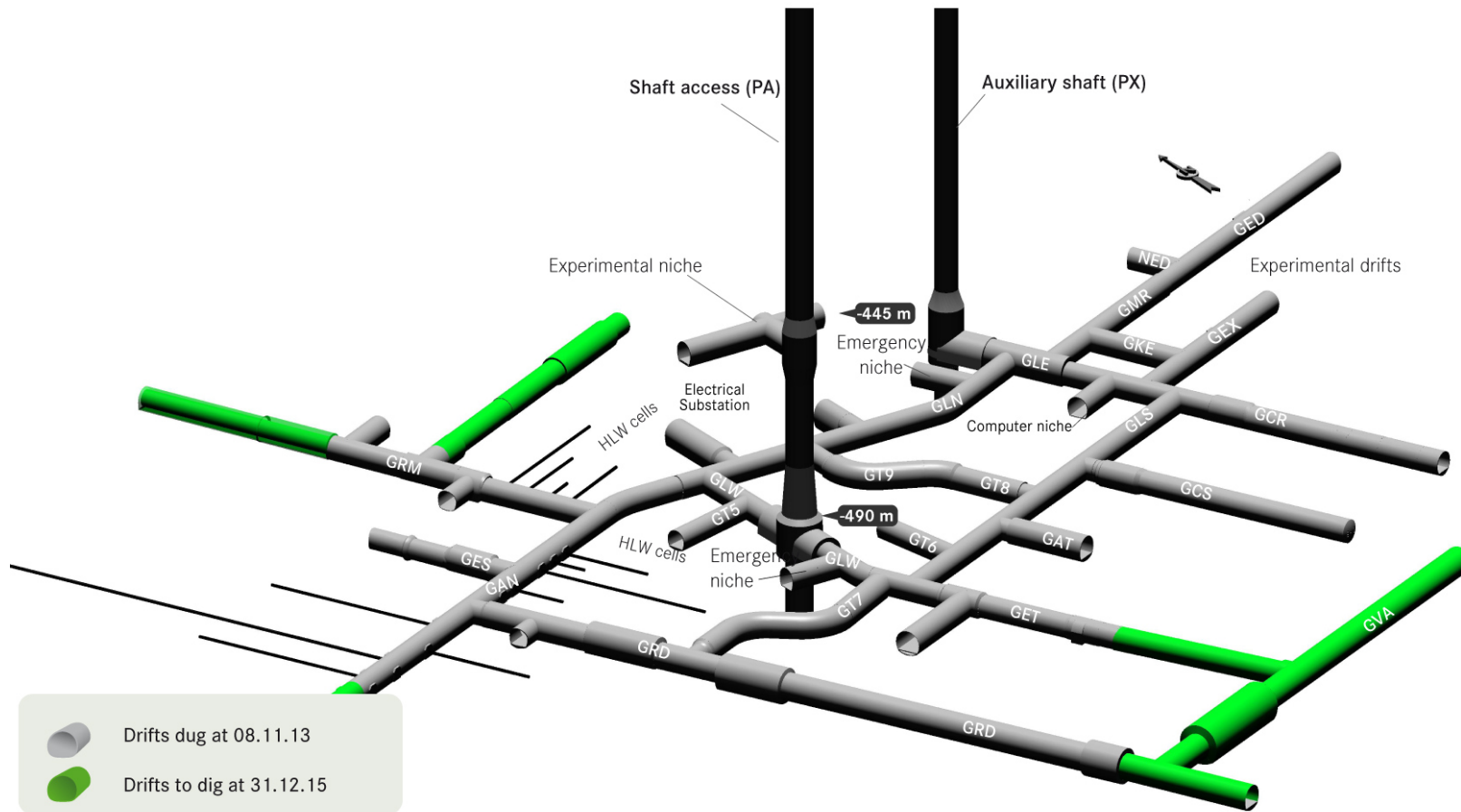


- ❑ Surface and underground nuclear facilities (500m depth)
- ❑ The facility will be in operation for **over a century**, requiring risk management throughout:
 - Identify risks (e.g. fire risks, handling risks),
 - Implement risk prevention and mitigation measures,
 - Detect any malfunctions,
 - Plan for the possibility of accidents,
- ❑ In the longer term, human and climate-related risks must be taken into account **to demonstrate safe disposal over a one-million year period**

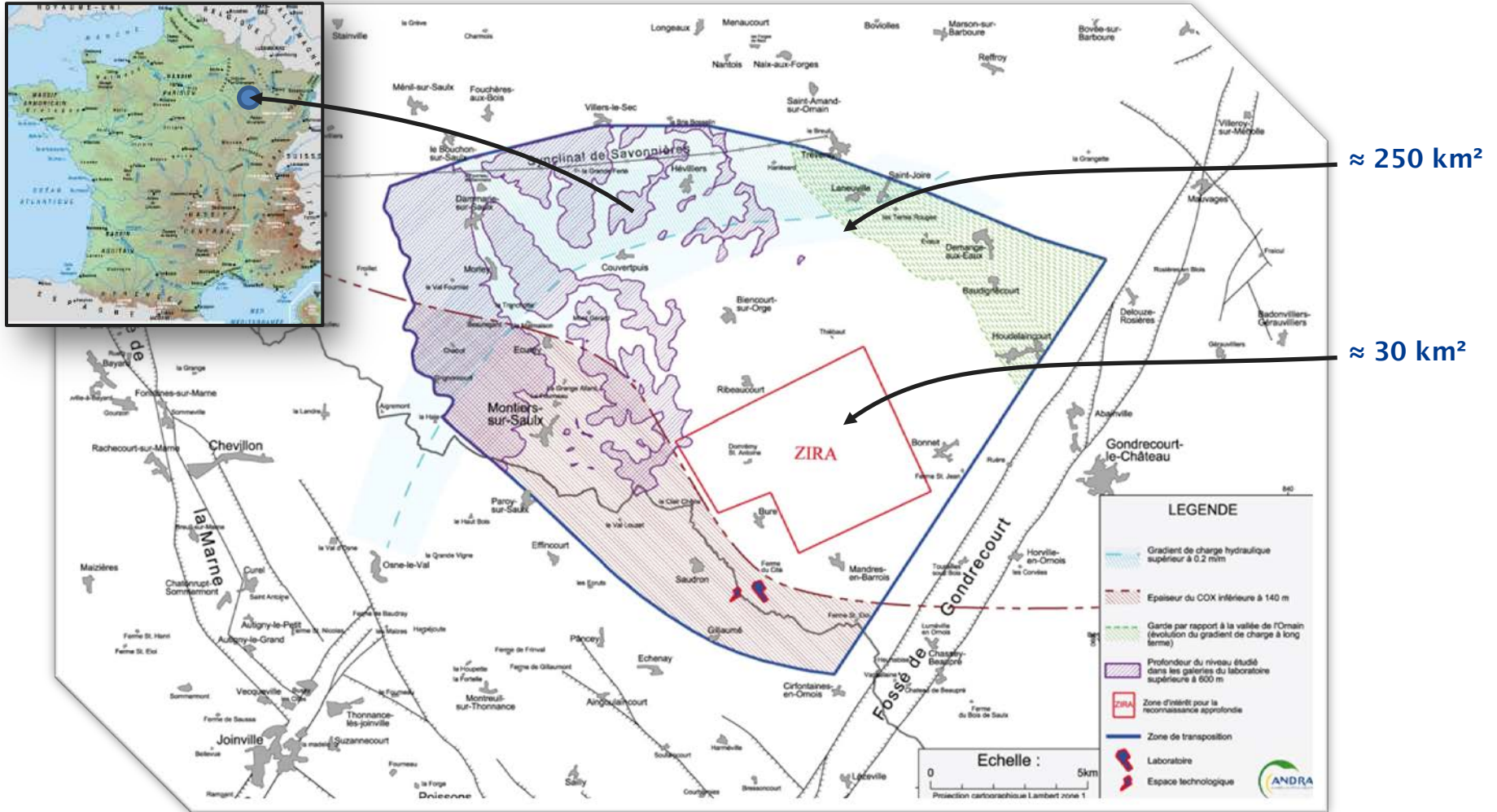




Architecture of laboratory drifts



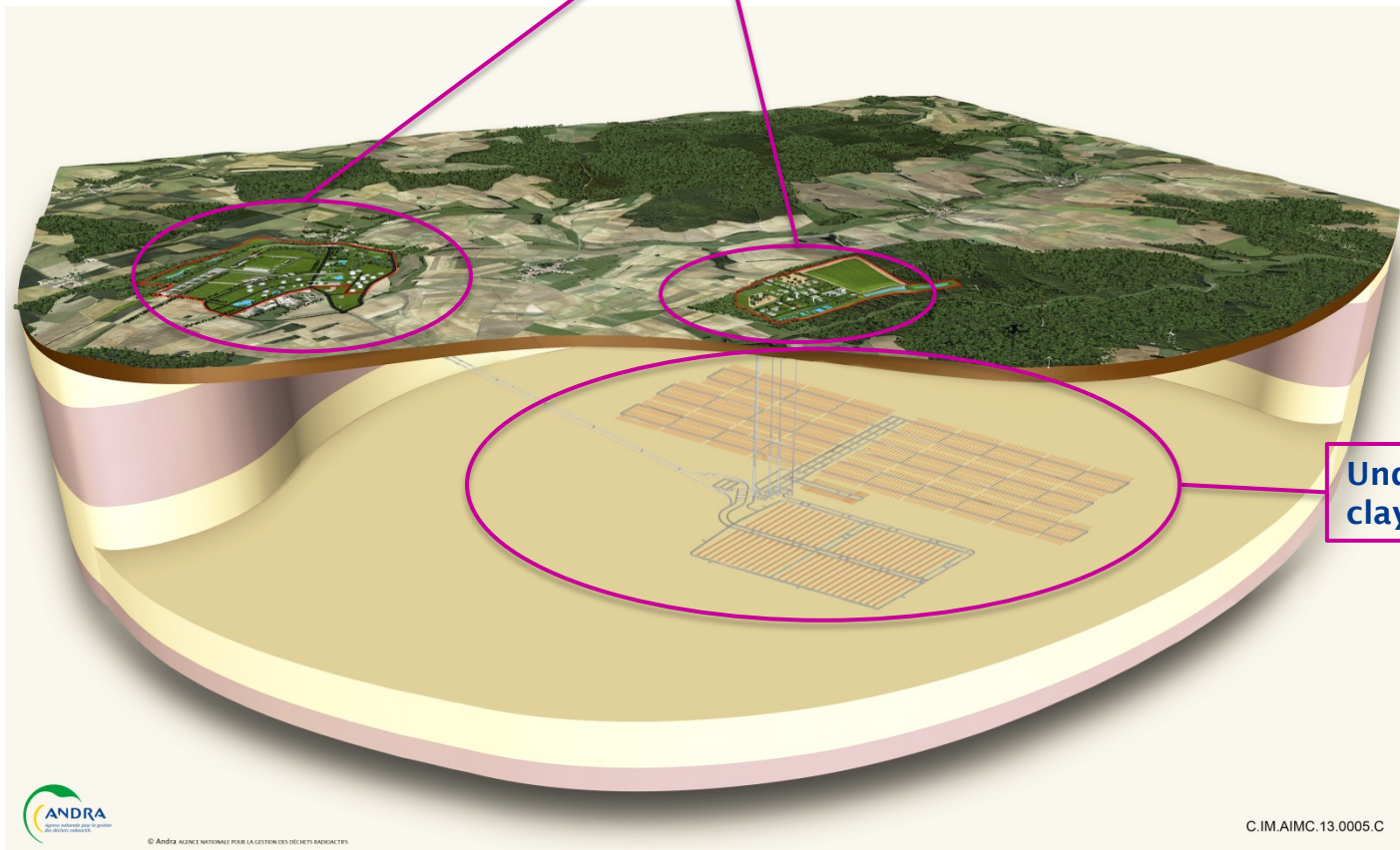




Clay formation: median depth $\approx 525\text{m}$ — Thickness $\approx 148 \text{ m}$

2 surface facilities:

- **Nuclear:** Receiving, inspecting, and preparing packages
- **Non Nuclear:** Shafts for construction work



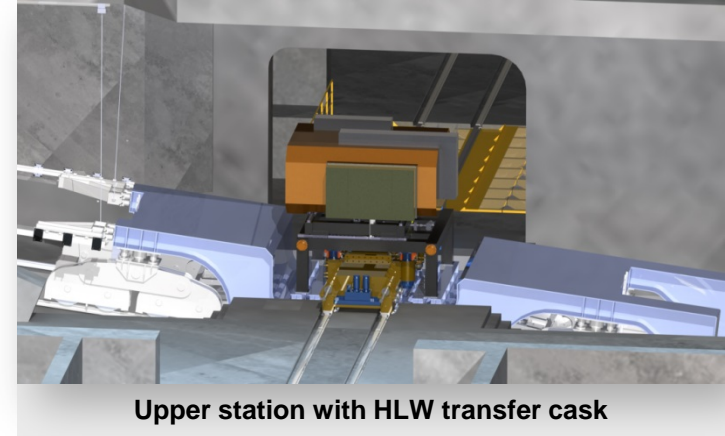
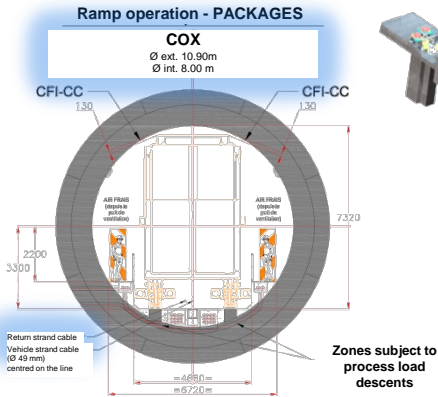
Underground facility in clay (500m depth)



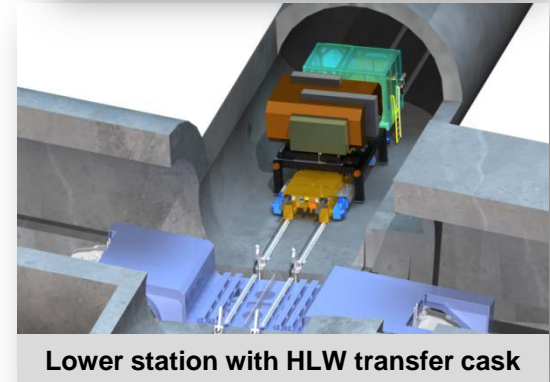
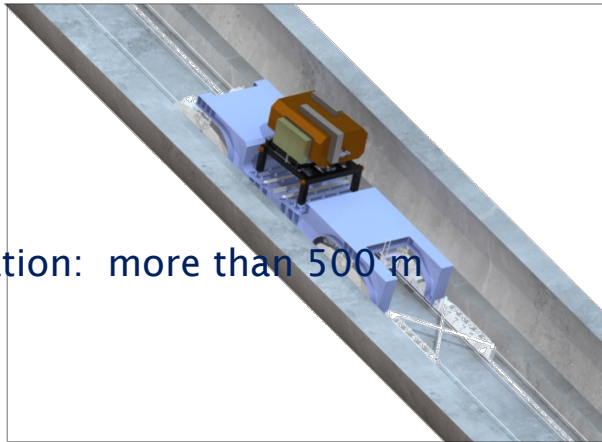
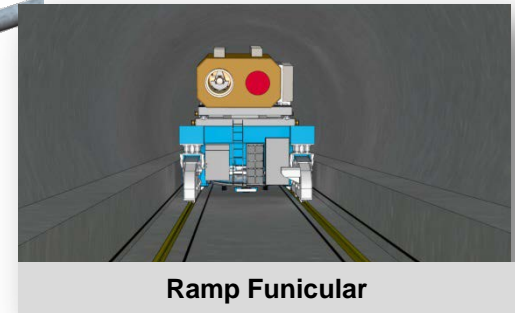
***Reception Area (100 Ha)
(nuclear)***

***Digging area (200 Ha)
(non nuclear)***

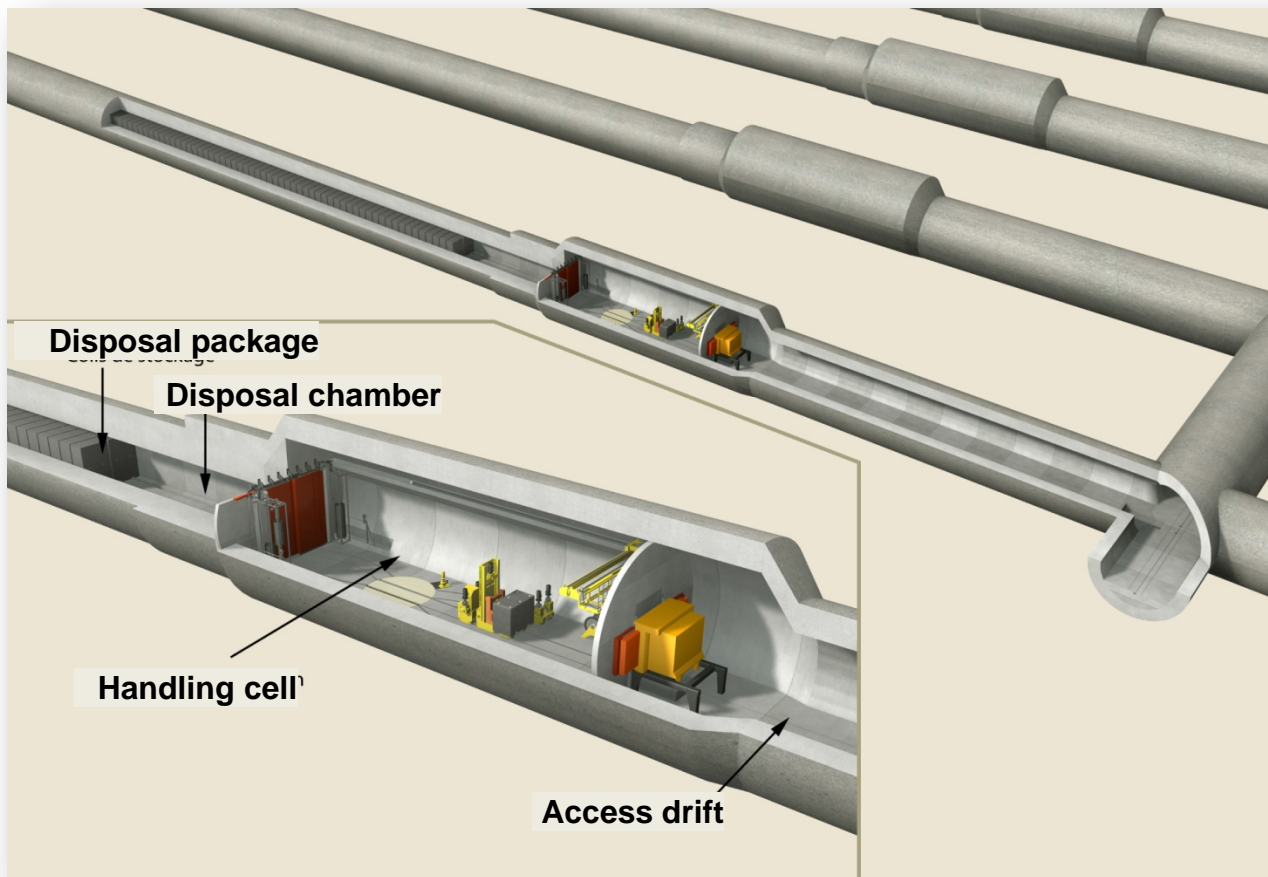




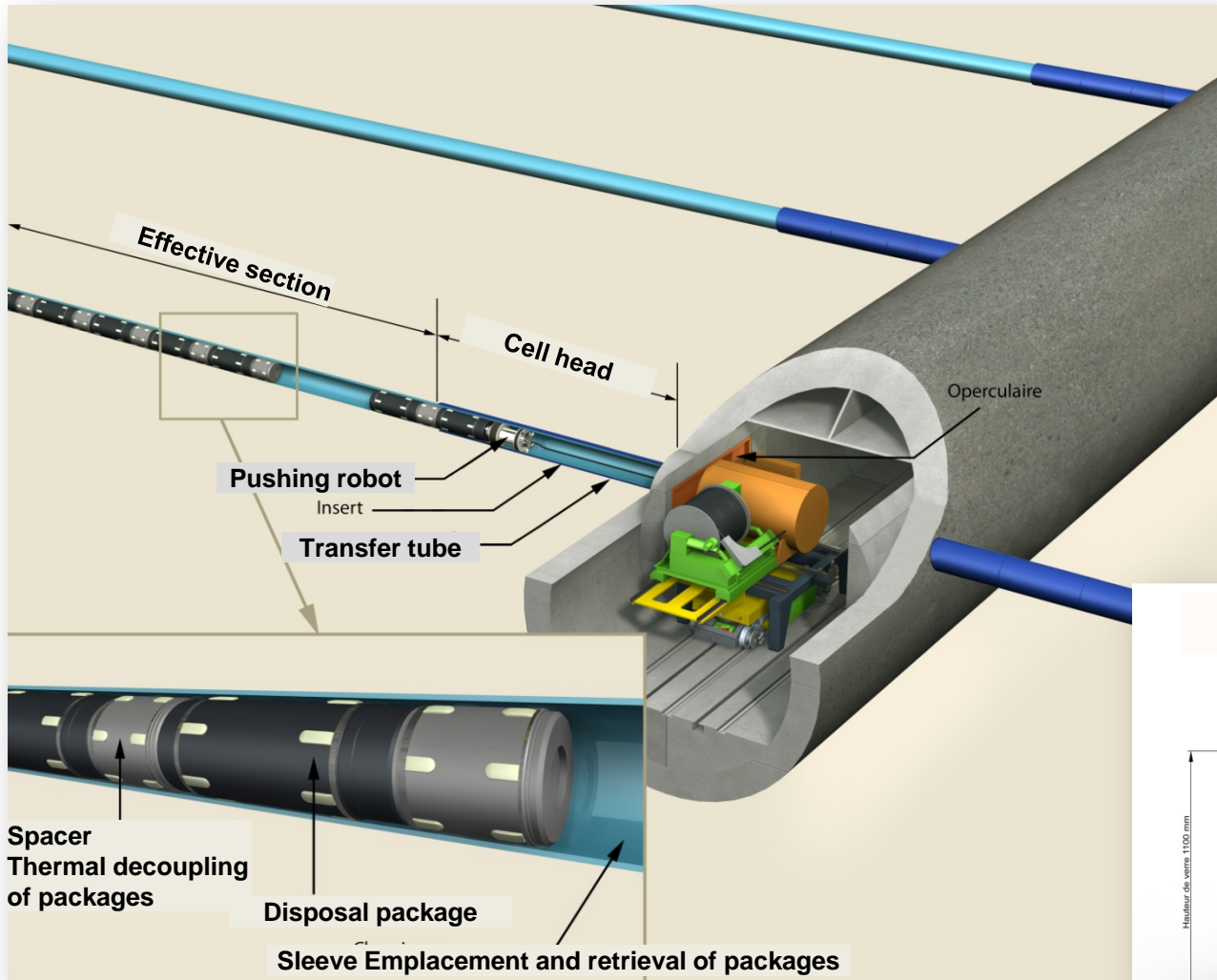
Funicular proposed by POMA



- Length: 4.2 km
- Difference in elevation: more than 500 m
- Slope: 12%
- Payload: 130 t
- Total rolling weight: 175 t
- Pulley effort required: 750 kW

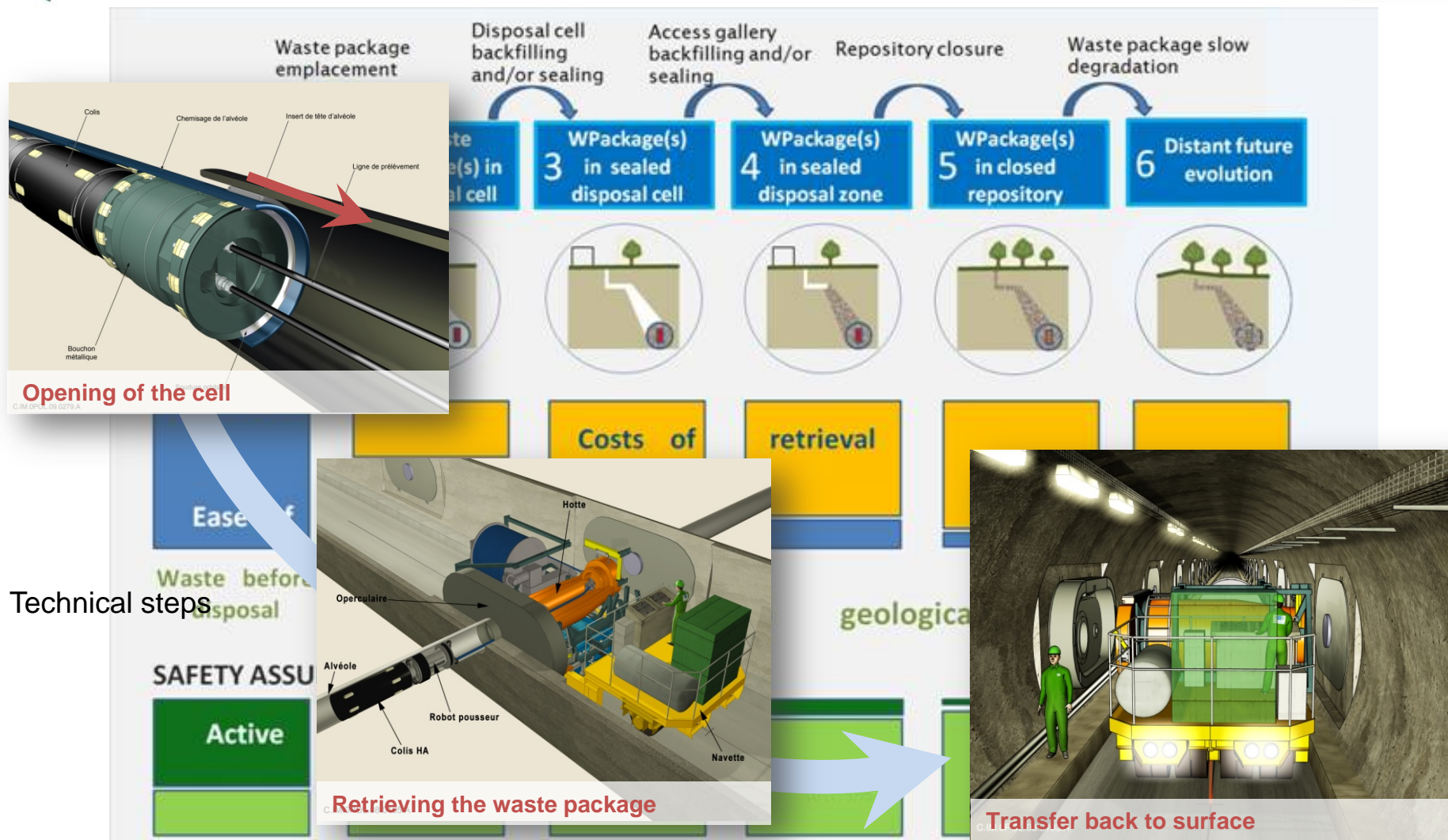


- Length: ≈ 400 m
- Excavated diameter: 9 m
- 2x2 or 3x3 packages
- No. of containers: 800-1,900



- Length: 100 m
- Diameter: 70 cm
- No.of containers: 7-20







Cigéo : Public debate

An important project milestone



□ From 15 May to 15 Decembrer, 2013

- 9 debates on the Internet
- Weekly Q/A in the local newspapers, published and distributed regionally at 180,000 specimens
- 154 « Cahiers d'Acteur » (4 pages position papers)
- 74,000 consultations of the Cigéo Public Debate Website
- 1,600 questions and advices



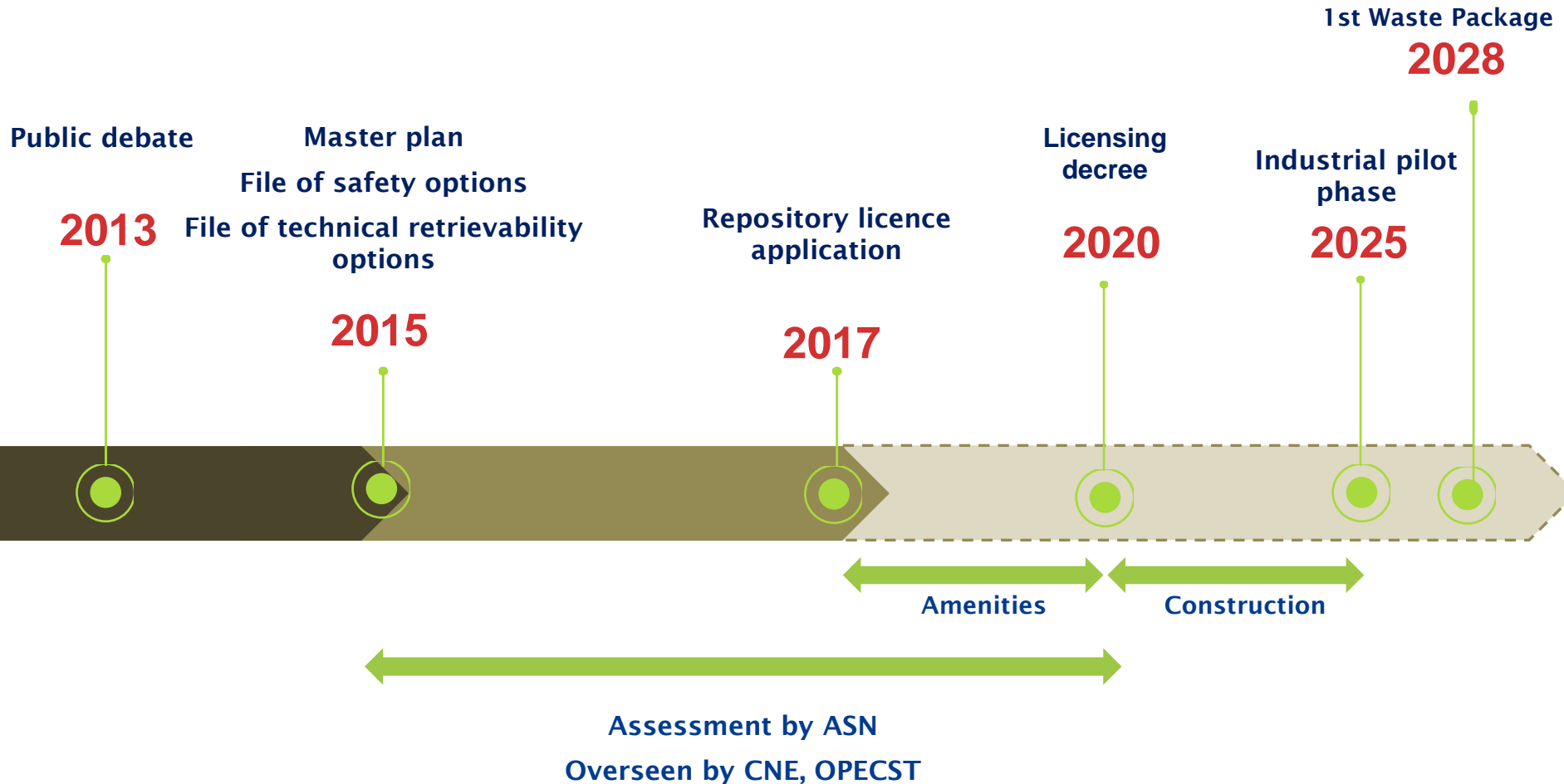
□ From December 2013 to January 2014

- A Citizen's Conference

➤ Innovative modalities, leading to much more citizens expressing their views than through traditional channels



- ❑ More progressivity concerning the facility start-up with an industrial pilot phase
- ❑ A long term visibility based on a regularly revised master plan for disposal operations
- ❑ More involvement of the civil society in the project
- ❑ Clarification of the calendar





Cigeo: the need for integration in its host environment

- ❑ Since 2010, economic support has been provided in the area through:
 - Support funds managed by two public interest groups
 - Waste producers (EDF, CEA and AREVA) moving activities into the area
 - Andra research activities at the Meuse/Haute-Marne Centre

- ❑ In 2013, the French government boosted this strategy with an **Interdepartmental Territorial Development Plan (SIDT)** that was presented at the Public Debate to highlight one of the Cigeo project objectives: ensure integration and economic development in the host areas.

- ❑ A new phase started in 2014 with a government **Territorial Development Contract (CDT)** whose aim is to organise the operational configuration and prepare the area for Cigeo by 2017.



Thank you for your attention

www.andra.fr