

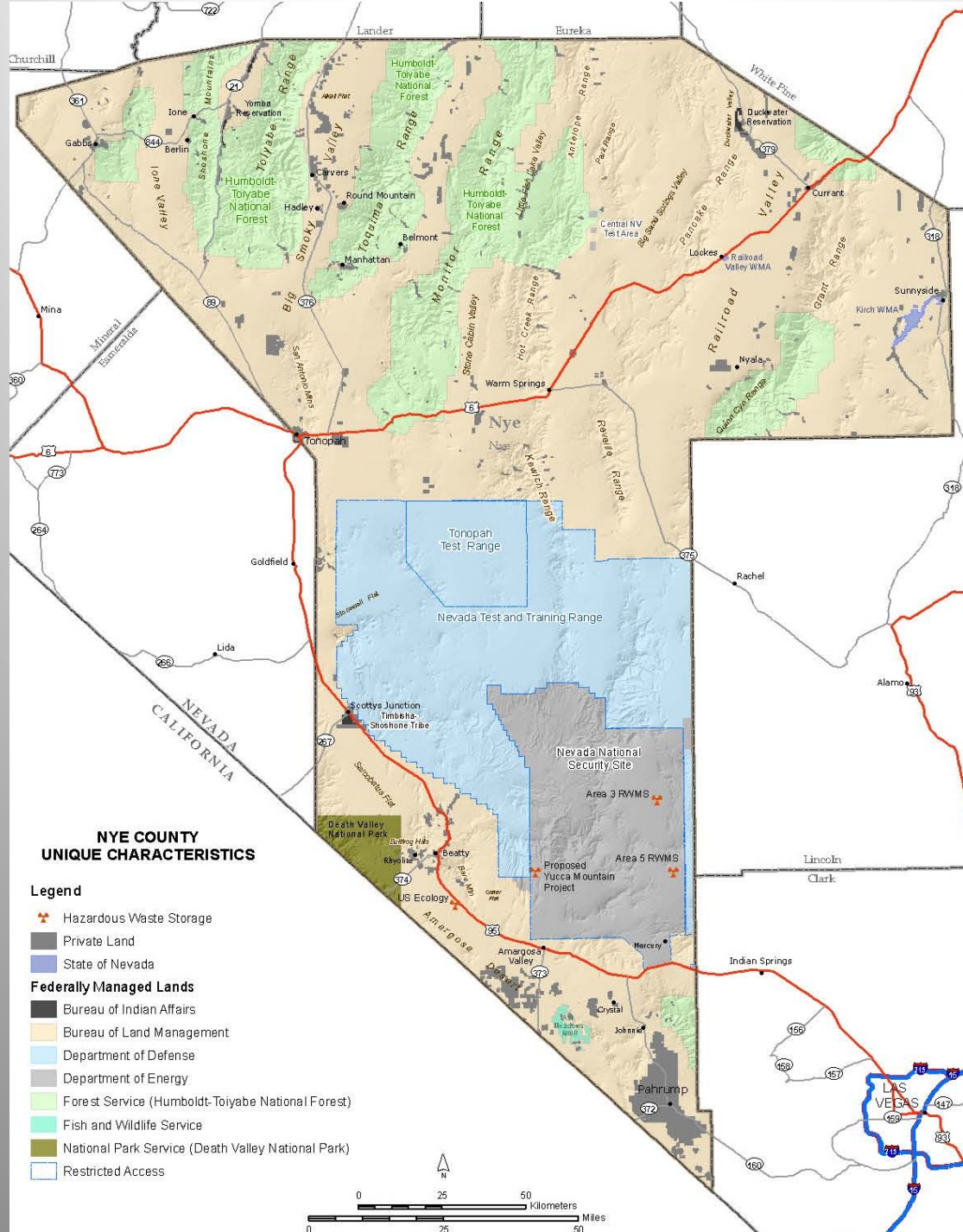


WM 2015 NNSS LLW DISPOSAL

Presentation by
L. Darrell Lacy
Nye County Nevada
MARCH 2015

WM 2015 – LLW AT NNSS

- Put things in perspective
- Nye County – over 18,000 sq miles and almost 98% federal controlled land
- Agencies
 - BLM
 - US Forest Service
 - DOD
 - US Fish and Wildlife
 - BIA
 - National Park Service
 - DOE – NNSA, EM, LM, Yucca Mountain (OCRWM/NE)



NYE COUNTY UNIQUE CHARACTERISTICS

Legend

Hazardous Waste Storage

Private Land

State of Nevada

Federally Managed Lands

Bureau of Indian Affairs

Bureau of Land Management

Department of Defense

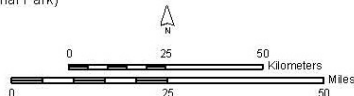
Department of Energy

Forest Service (Humboldt-Toiyabe National Forest)

Fish and Wildlife Service

National Park Service (Death Valley National Park)

Restricted Access





WM2015 – LLW at NNSS

Local Issues and Concerns

The NNSS is larger than Rhode Island and wholly contained in Nye County but majority of workers live elsewhere and benefits go elsewhere

1500 LLW trucks per year –to avoid populated areas in Las Vegas, all routed through Nye County. Some roads are substandard and in serious need of safety improvements

WM 2015 – LLW at NNSS

- Good Coordination on Emergency Response and Training at the local level
- Local Issues and Concerns
 - Area 5 at NNSS is the only facility within DOE where the Waste Acceptance Criteria allow many types of GTCC like government waste and SNM
 - One recent example is the U-233 CEUSP waste from Oak Ridge
 - Nye County has signed off on the CEUSP shipments but lack of communication up front led to delays and concerns at the local and state level

WM 2015 – LLW at NNSS

- Recommendations
 - Communication is important, SSABs do not satisfy the need to reach out to local government
 - Be aware of local concerns – DOE employees need to understand that they may get blamed for the deeds of other federal agencies or DOE departments
 - Mitigation, benefits and local involvement should be part of any DOE program – not an afterthought