

EFCOG Update For CHPRC/Hanford Plateau Contract; March 2014

System Integration Test Platform

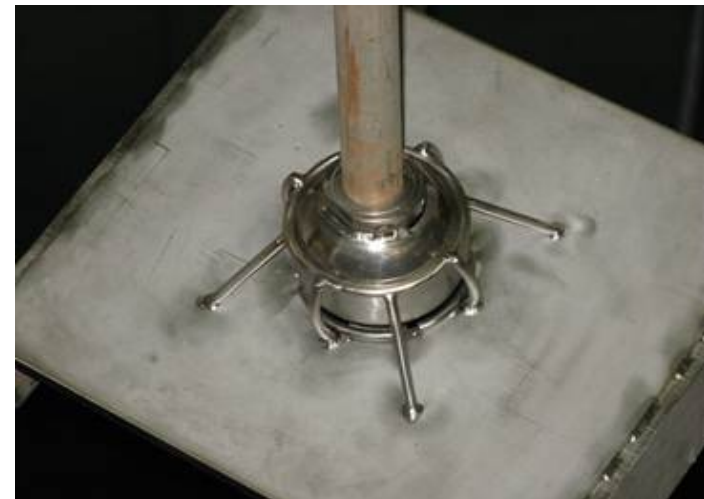
Ty Blackford,

Vice President for the
Decommissioning, Waste, Fuels
& Remediation Project

CHPRC



Sludge Transfer Cask Control Float



Sludge Mobilization Ball Float Assy

Prioritization of Plateau Work Scopes

PFP Demolition Project

- Slab on Grade; 2016 Completion
- Final glove box removals
- Packaging of PFP wastes

Ground Water Treatment

- Add in Uranium Treatment
- Barrier Work Along River
- Pump and Treat Optimization

Sludge Treatment Project

- Continuation of annex shell
- Engineered Container Procurement
- Integrated Process Operations Demonstration (IPOD) Completion

Large Box Load Out for Shipment to PFNW



Buy Back Work Scopes

- State Administrative Order
- Aging Facility Fixes
- Water Treatment Alternatives
- D&D Capability
- WESF Ventilation and Capsules
- Increased well drilling

Other Prioritization Challenges

Maintaining D4 Capability

- Some new work
- Regulatory frame work progresses

WESF Capsule Dry Storage

- Maintaining momentum



Covered Large Containers at CWC Expansion Area

Waste Management Capacity

- Primary Support to Projects with Funds
- Continued Challenges in Regulatory Areas
- Finding Funds to Support Treatment or Processing and Protect Resources
- Implementing the AO Requirements

Reprioritization – *Issues/Challenges*

- DOE FY2014 Reprioritization impacts/deferrals
 - Sludge Treatment Project – Two-year delay in project completion (FY19)
 - Waste & Fuels Management Project – additional one-year delay (FY16)
 - Transuranic Waste (TRU) Program restart (repackaging, characterization, and shipping)
 - Decommissioning & Remediation Project – additional one-year delay
- Future potential cost drivers
 - Project suspensions/delays and restarts; trying to avoid
 - Regulatory scrutiny continues; EPA, Ecology, DOE, Defense Nuclear Facilities Safety Board
- Challenges
 - Maintaining waste processing capabilities; onsite and commercial
 - Workforce retirement accelerations; over 110 in FY2013
 - Container failures; perception vs realities

Waste Project – *Look Ahead*

- **Sludge Treatment Project**
 - Completing IPOD tests for Retrieval System
 - Complete KW Annex loading bay concrete walls and outer shell
 - Risk mitigation for equipment purchase; Transfer equipment fabrication
- **Waste & Fuels Management Project**
 - Process liquid wastes at ETF to support transitions
 - Implementing EPA and Ecology Administrative Orders
 - Commence WESF ventilation upgrades and dry storage design
 - Ship large boxes to PFNW if funding available
- **Decommissioning & Remediation Project**
 - Commence remediation of 100K Area legacy waste sites
 - Commence 165 KE demolition
- **Continue to find efficiencies to fund other work scopes**