

International Deep Repository Progress

- the German case -

Horst Geckeis

INSTITUTE FOR NUCLEAR WASTE DISPOSAL (INE)

DAEF: German Association for Repository Research

Members:



Guests: BMWi, BMU, BfS, BGR, PtKa

Situation in Germany

Stilleben in Gorleben

Still life in Gorleben



DIE RHEINPFALZ 01.12.2012

- Public participation and transparency
- Selection of regions for detailed exploration (1990s)
- Stepwise approach for site selection until **2031**

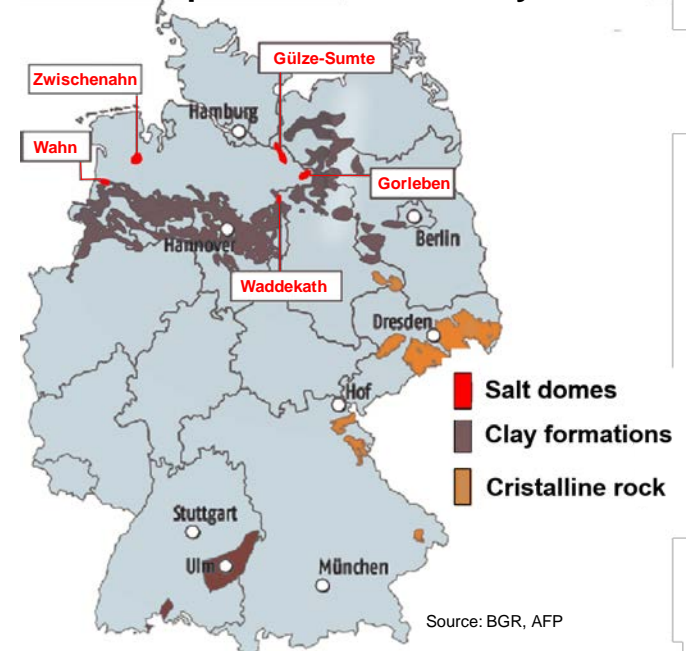
Lower Saxony government

planning 300,000 m³ → Shaft Konrad
(for high level waste)

29,000 m³ → ??

(for low level waste, technological waste)

Potential host rocks for nuclear waste repositories in Germany



■ Chances

- New process strongly supported by a broad political majority
- Extensive public participation explicitly foreseen in the law
- High degree of transparency specified

■ Risks

- Debate about the „Gorleben“ site still unresolved
- Time schedule set up by the law very optimistic
- Implementation of a repository might be further delayed
 - ➔ loss in competence and experience
 - ➔ „short term risks“ of nuclear waste disposal increase

The problem with the time scale:

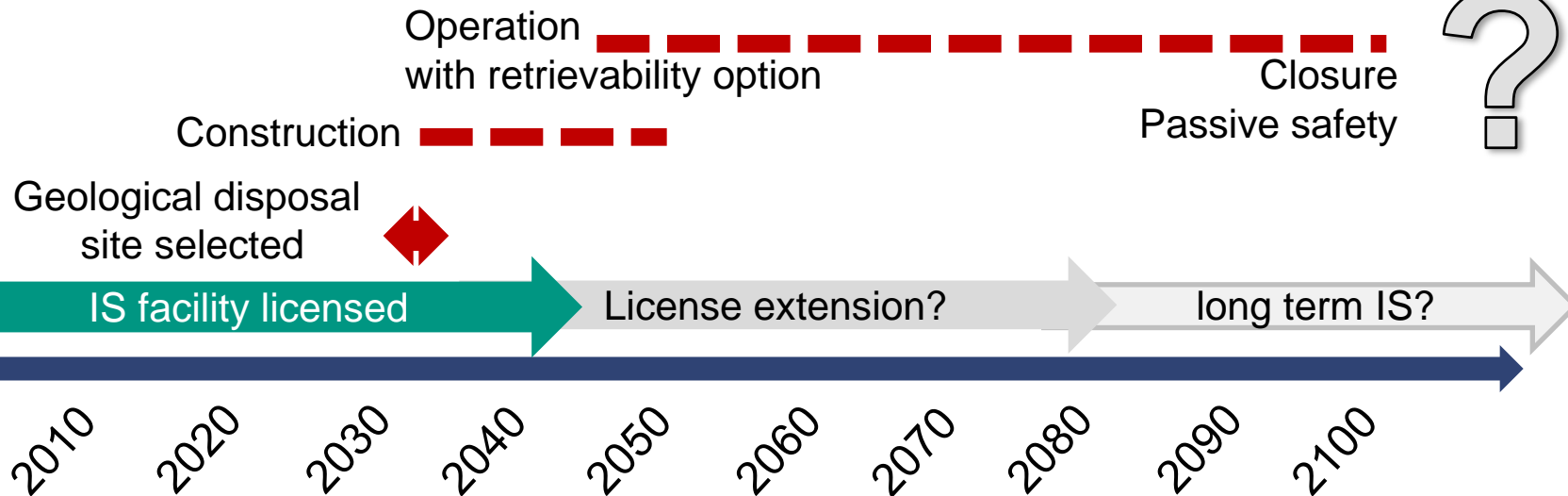
Delay in implementing a final repository creates new problems!

Risks:

- economic risks
- technical uncertainties
(used nuclear fuel degradation?)
- societal changes
- loss of competences (Know-how)

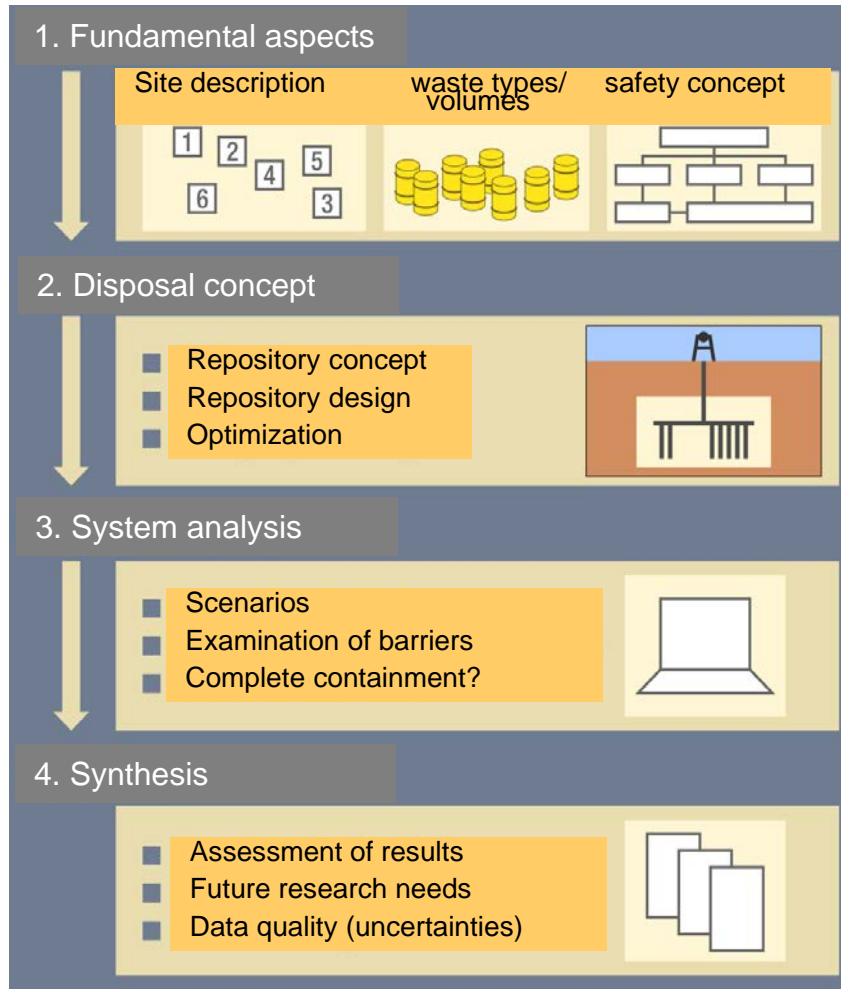


European economic crisis reaches boiling point



Provisional safety analysis Gorleben (vSG)

80 scientists / 9 institutions:



- Examination whether the (modified) vSG approach can be applied to safety analyses in other host rock formations
- Are requirements and criteria applicable to the (new) site selection process?
- Identify R&D required for site-selective safety analyses

Aims of the DAEF:

- Intensifying collaboration in the field of repository research
- Keeping and development of expertise
- Organization of symposia and workshops
- Informing politics, authorities and the public

DAEF: German Association for Repository Research

Members:



Guests: BMWi, BMU, BfS, BGR, PtKa

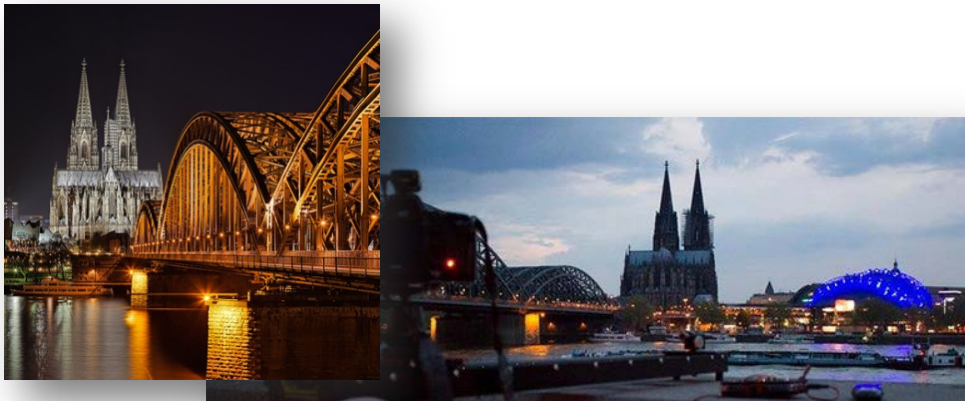


Key topics in deep geological disposal

- Repository concepts in different host rocks and safety analyses
- Public involvement and participation
- Interdisciplinary aspects of nuclear waste disposal
- Aspects of operational safety related to nuclear waste disposal
- Construction of technical barriers and
- All scientific aspects of the nuclear waste disposal safety case

Cologne, 24.-26. September, 2014

www.daef2014@fu-confirm.de



*Cologne – City of the „dome“
Site with more than 2000 years history*