

# “EFCOG’s Knowledge Portal Review”

## 2014 Waste Management Symposium

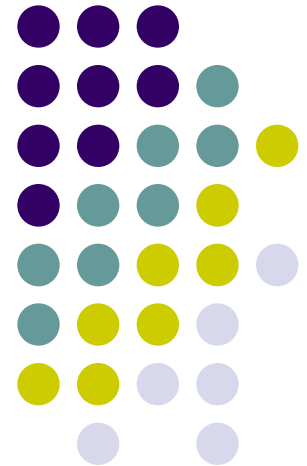
*Work Planning and Control Initiative*

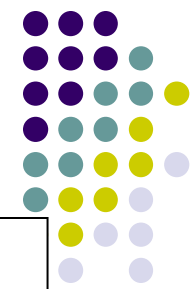


Presented by

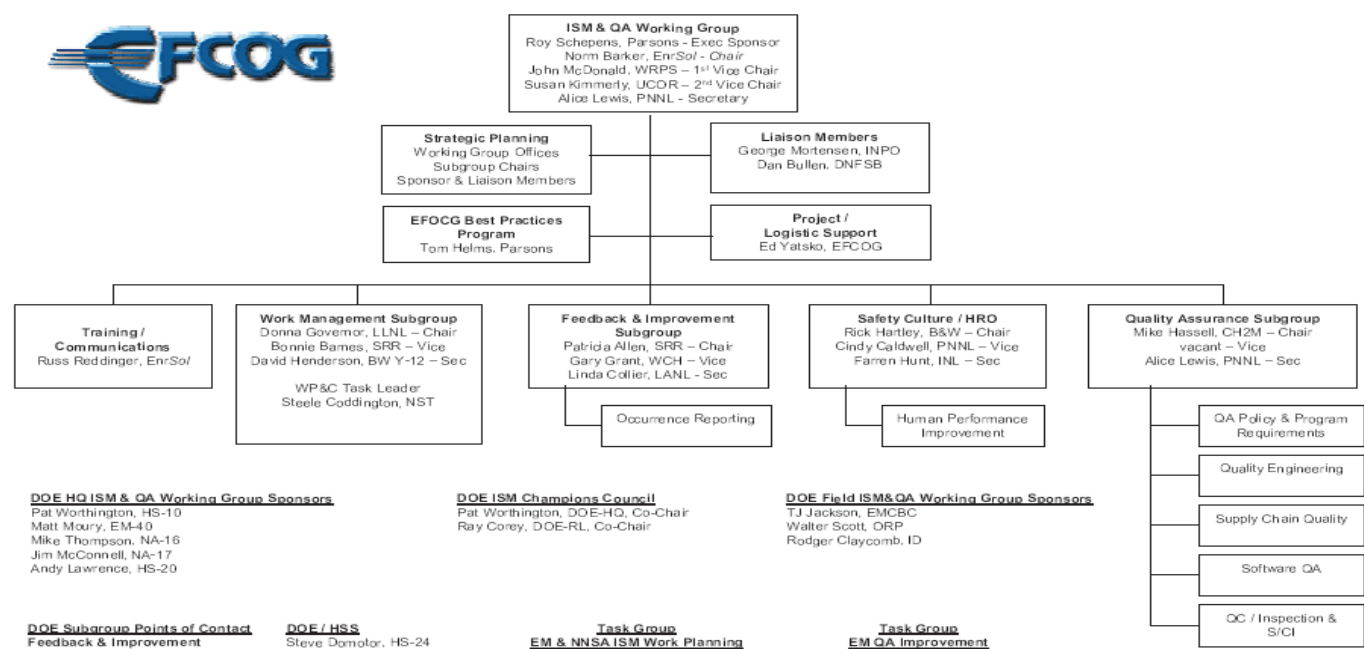
*Donna Governor*  
*ISMS/QA Working Group*

Panel Session 51  
March 4, 2014





## Integrated Safety Management and QA Working Group



**DOE HQ ISM & QA Working Group Sponsors**  
 Pat Worthington, HS-10  
 Matt Moury, EM-40  
 Mike Thompson, NA-16  
 Jim McConnell, NA-17  
 Andy Lawrence, HS-20

**DOE ISM Champions Council**  
 Pat Worthington, DOE-HQ, Co-Chair  
 Ray Corey, DOE-RL, Co-Chair

**DOE Field ISM&QA Working Group Sponsors**  
 TJ Jackson, EMCBC  
 Walter Scott, ORP  
 Rodger Claycomb, ID

**DOE Subgroup Points of Contact**  
 Feedback & Improvement  
 HRO  
 ISMS  
 Occurrence Reporting  
 Quality Assurance

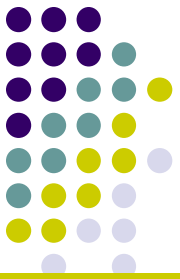
**DOE / HSS**  
 Steve Donohoe, HS-24  
 Earl Carnes, HS-23  
 Pat Worthington, HS-10  
 Ashley Ruocco, HS-24  
 Collette Broussard, HS-33

**Task Group  
 EM & NNSA ISM Work Planning**  
 EM - Matt Moury, EM-40  
 NNSA - Jim McConnell, NA-17  
 Jim Winter, NA-171

**Task Group  
 EM QA Improvement**  
 EM - Matt Moury, EM-40  
 Bob Murray, EM-23  
 Larry Perkins, EM-23

**ISM & QA Working Group Org. Chart**  
 Effective Date: 6-4-13  
 Rev. 51

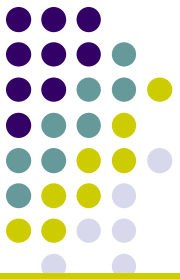
# EFCOG Work Management Subgroup - Purpose



Promote excellence in Department of Energy (DOE) work management programs

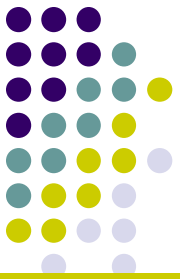
- Work together with DOE to improve activity level Work Planning & Control (WP&C)
- Developed and issued the EFCOG WP&C Guide
- Perform Site Assist Visits to facilitate implementation of Activity Level WP&C

# Recent History



- Worked closely with DOE, specifically HSS, to help support WP&C improvements as outlined by the DNFSB/ Tech-37 Response.
- Members of this subgroup have and are currently, participating in the following:
  - ISM Champions Workshop
  - WP&C Analysis Report - Steve Domotor
  - Handbook – Jim Winter
  - WP&C CRADs for Oversight Guide - Don Rack

# Current Action Plan



- Develop and issue recommended WP&C Metrics/Indicators for all types of work activities performed, including R&D, Maintenance, Construction, D&D and Operations
- Issue a WP&C survey to gather information and lessons learned from our membership
- Continue to support the development and implementation of the DOE Handbook and WP&C CRADs
- Continue to perform Site Assist Visits to facilitate implementation of Activity Level WP&C on a Peer to Peer level

# Assist Visits



Assist visits are a peer to peer evaluation on how well hosting site are implementing WP&C into all activity level work planning.

Assist visits provide opportunities for sites to share information, experiences, knowledge and lessons learned.



Assist visits are important to help with the implementation of the Activity Level WP&C Assist of the EFCOG WP&C Guide document

Note Worthy practices identified are considered as Best Practices.

Scheduled Assist Visits for this year include Portsmouth and Argon



# EFCOG Work Management Subgroup



Contact information:

[http://www.efcog.org/wg/im\\_wm/index.htm](http://www.efcog.org/wg/im_wm/index.htm)

**Donna Governor, Chair**

LLNS

925-424-4478 (office)

925-784-4087 (cell)

[governor6@llnl.gov](mailto:governor6@llnl.gov)

**David Henderson, Secretary**

Y12

865-241-9987 (office)

865-201-1869 (cell)

[hendersondp@y12.doe.gov](mailto:hendersondp@y12.doe.gov)

