



Safety case and risk management Decommissioning

Magnus Vesterlind

Section Head

Waste and Environmental Safety Section

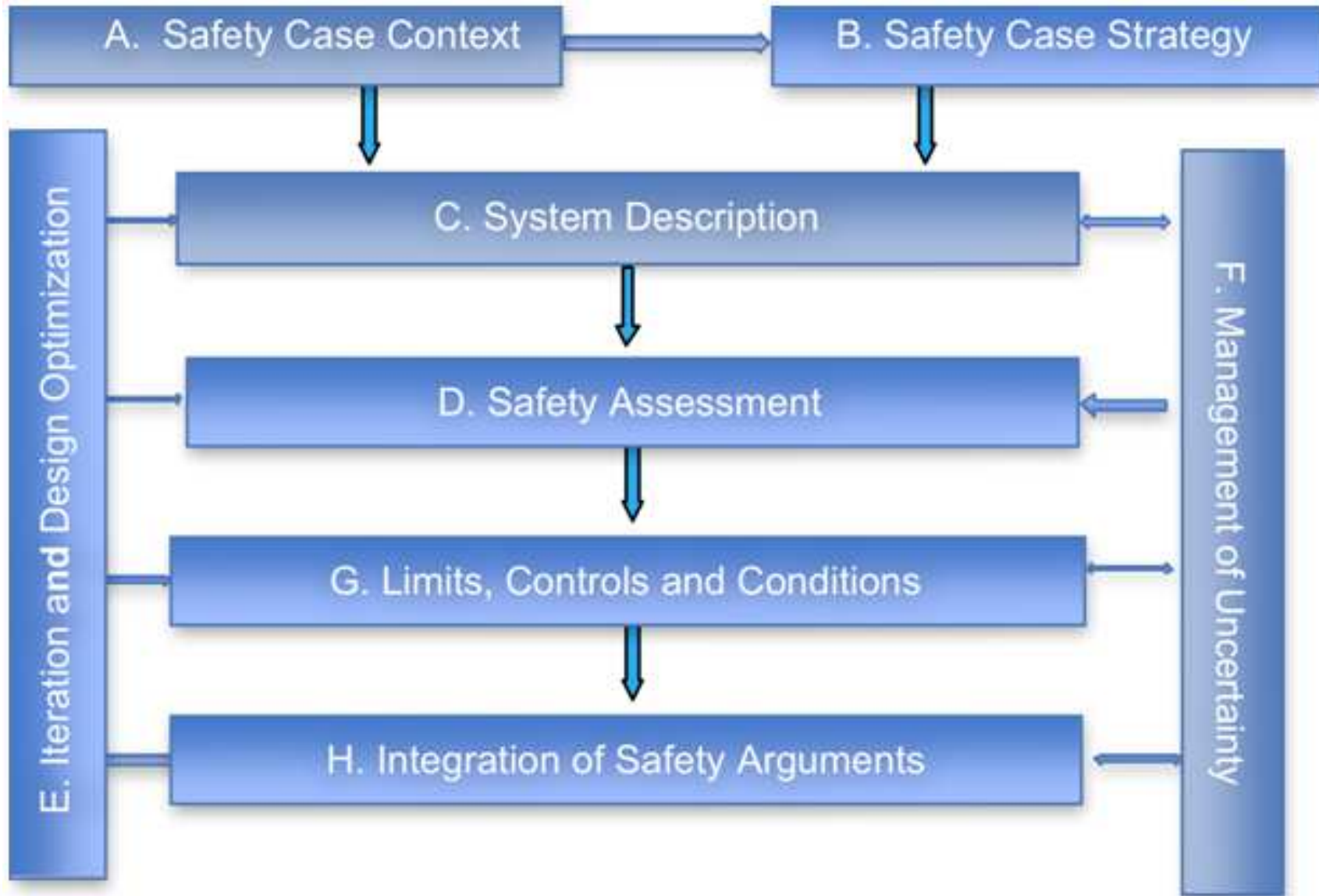
International Atomic Energy Agency

Safety case

”A collection of arguments and evidence in support of the safety of a facility or activity”


- Predisposal
- Disposal
- Decommissioning
- Remediation

Safety case



Decommissioning

- Safety case for decommissioning
 - **DeSa Project** (2004 – 2007)
 - Harmonized approach for safety assessment including review and graded approach
 - Demonstration and illustration of applicability
 - **FaSa Project** (2008 – 2011)
 - Evolution of safety assessments during facility lifecycle
 - Implementation of safety assessment results and the related review
 - Illustration of applicability
- Experience showed: *management of project risks is important to successfully perform decommissioning*



International Project on
Decommissioning (Project) Risk Management
DRiMa Project

General objectives

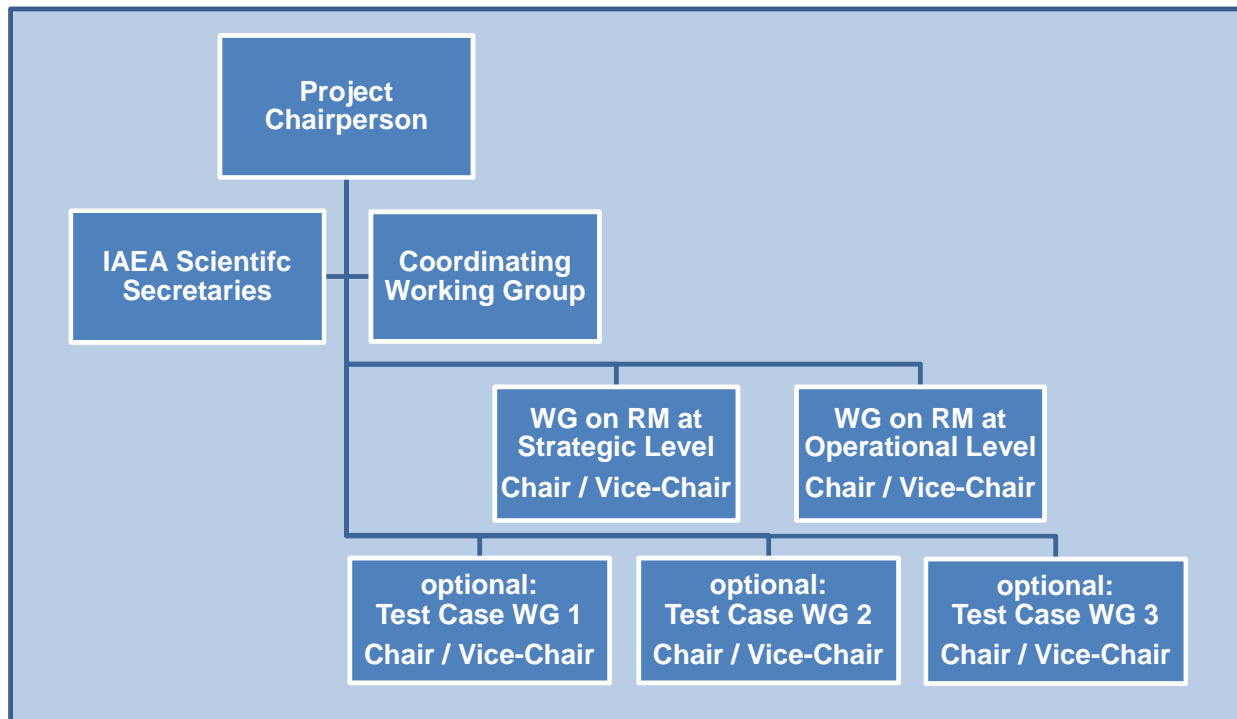
- Recommendations on, and practical illustration of the application of risk management during planning and execution of decommissioning
 - Risk management during planning and decision making
 - Optimize the success and safety of decommissioning projects by minimizing threats and maximizing opportunities
 - Assist in development of fallback / contingency plans

Scope

- Illustrate the relation between the output of a risk management process and the decision making
 - strategic level (→ initial decommissioning plan)
 - operational level (→ development of detailed work plans)
- Explore the interfaces
 - risk management systems
 - evolution of safety assessments
 - other managerial systems in place
- Review and define factors influencing project risks
- Illustrate the application of a graded approach
- Integrate good practice on risk management from outside the nuclear sector

Project structure

International Decommissioning Network (IDN)



Working Groups

WG on Risk Management at Strategic Level

- Evaluate risks related to strategic decisions
 - decommissioning strategy
 - waste management strategy disposal concept
 - large component management
- Typically relevant during preparation of the initial decommissioning plan, but not limited to that!

WG on Risk Management on Operational Level

- Evaluate risks related to the operational level, especially during preparation of work plans, but also when designing the decommissioning project on the level of the final decommissioning plan

Thank you!



International Atomic Energy Agency