



A Consent-Based Approach to Siting and Developing Future Facilities for Nuclear Waste Management and Disposal

WM 2013 Session 102: The Future of Consent- Based Siting of SNF/HLW Disposal Facilities and Discussion of the Alternatives

Waste Management 2013 Conference
February 28, Phoenix AZ

Glenn Paulson, Ph.D.
Science Advisor to the Administrator
U.S. Environmental Protection Agency

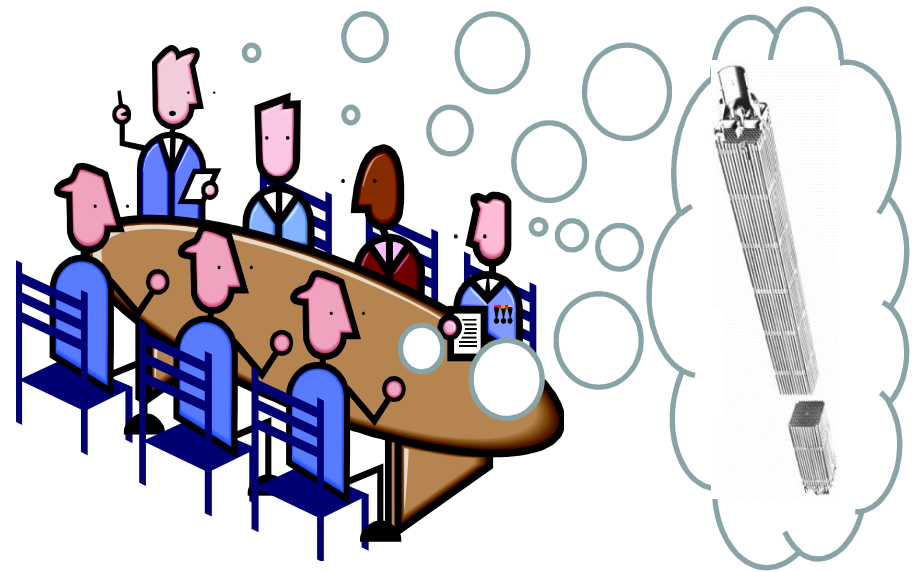
Overview of 8 Key Recommendations

1. A new, consent-based approach to siting and development



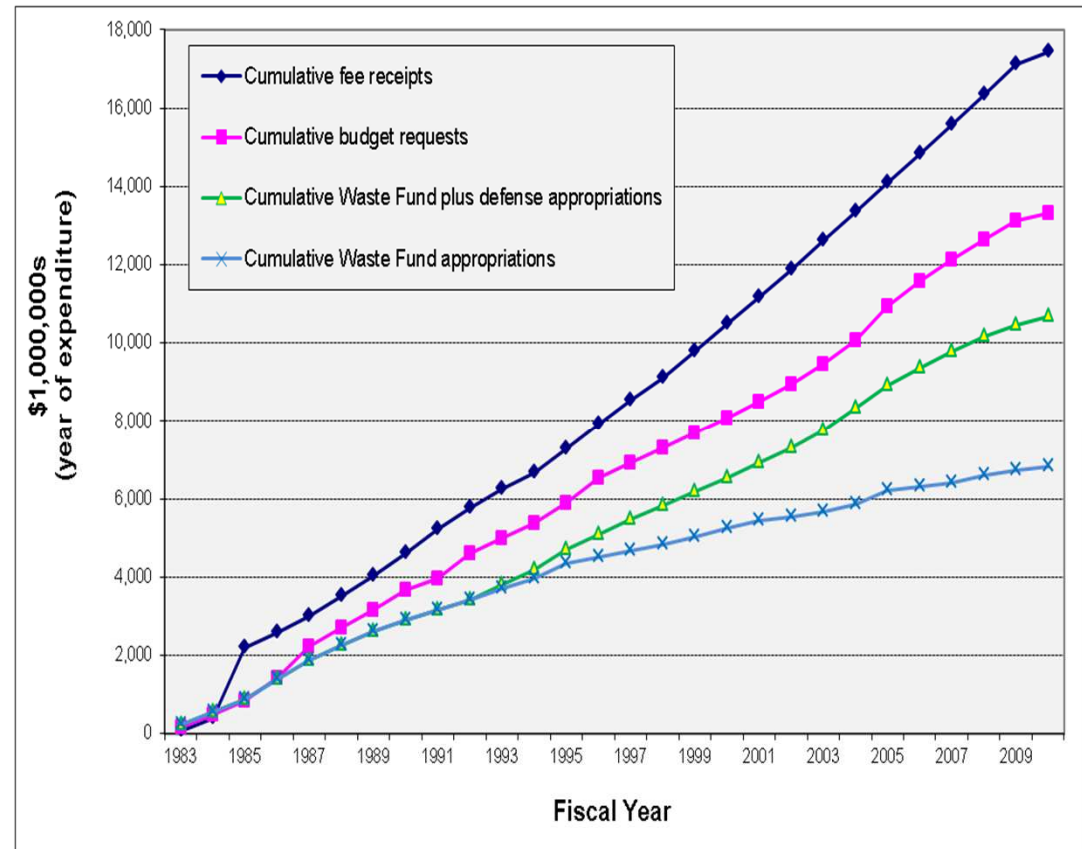
Overview of 8 Key Recommendations

2. A new organization dedicated solely to implementing the waste management program and empowered with the authority and resources to succeed



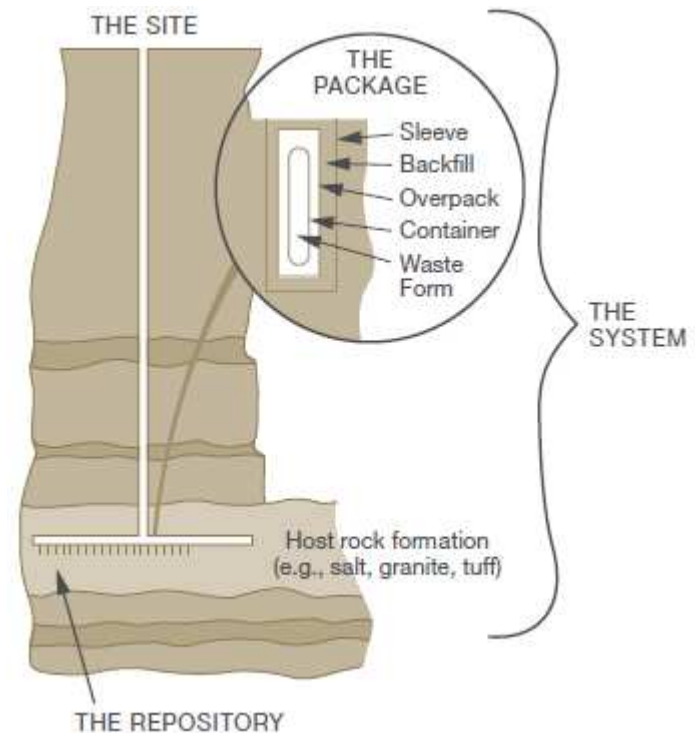
Overview of 8 Key Recommendations

3. Access to the funds nuclear utility ratepayers are providing for the purpose of nuclear waste management



Overview of 8 Key Recommendations

4. Prompt efforts to develop one or more geologic disposal facilities



Overview of 8 Key Recommendations

5. Prompt efforts to develop one or more consolidated storage facilities



Overview of 8 Key Recommendations

6. Prompt efforts to prepare for the eventual large-scale transport of spent nuclear fuel and high-level waste to consolidated storage and disposal facilities when such facilities become available



Overview of 8 Key Recommendations

7. Support for continued U.S. innovation in nuclear energy technology and for workforce development



Overview of 8 Key Recommendations

8. Active U.S. leadership in international efforts to address safety, waste management, non-proliferation, and security concerns



Proposed Legislative Changes

Fully implementing these recommendations will require changes to the NWPA or other legislation to:

- Establish a new facility siting process
- Authorize consolidated interim storage facilities
- Broaden support to jurisdictions affected by transportation
- Establish a new waste management organization
- Ensure access to dedicated funding
- Promote international engagement to support safe and secure waste management

Empowering a New Waste Management Organization to Succeed

- Organizational form: several options; Commission recommends federally-chartered corporation
- Scope of mission: to site, license, build and operate facilities for the safe consolidated storage and final disposal of SNF and HLW and conduct related R&D
- Resources and authorities: substantial implementing authority and assured access to funds coupled with *rigorous technical, financial and regulatory oversight*
- Governance: board of directors nominated by the President, confirmed by Senate

Siting New Facilities: Getting Started

The United States should begin siting new nuclear waste management facilities by:

- Developing a generic standard and supporting regulatory requirements EARLY in the process
- Developing a set of basic initial criteria
- Encouraging expressions of interest from a large variety of communities
- Establishing initial program milestones

Getting to Consent: Navigating the Federal/State/Tribal/Local Rights Dilemma

- Participation in the siting process on a voluntary basis
- Roles and authorities of host states, tribes, and communities defined through a process of negotiation
 - Implementing organization has authority to enter into legally binding agreements
- Implementing organization provides financial and technical support for participation
- Substantial incentives are made available
- Meaningful consultation in all aspects of facility siting, development, and operation



Conclusion

- The overall record of the U.S. nuclear waste program has been one of broken promises and unmet commitments
- The Commission finds reasons for confidence that we can turn this record around
- We know what we have to do, we know we have to do it, and we even know how to do it
- We urge the Administration and Congress to act on our recommendations, without further delay

Recent Developments

- BRC Member, Allison MacFarlane, now Chair of NRC
- BRC Senior Advisor joins EPA as Science Advisor to the Administrator
- DOE's strategy for UNF and HLW
- Yucca Mountain saga continues...

Contact Information

Glenn Paulson

Paulson.glenn@epa.gov

Ph: 202.564.6811

U.S. Environmental Protection Agency

Office of the Science Advisor

1200 Pennsylvania Avenue, NW

Washington, DC 20460