



# **MAXIMIZING OPERATIONAL EFFICIENCIES IN WASTE MANAGEMENT ON THE HANFORD PRC**

**Presented to: EFCOG, March 2013**

**Presented by: Ty Blackford**

# Funding Uncertainties Drive Change

- **Maintain Safe and Compliant Operations**
- **Sustain Critical DOE Operations given**
  - **Mission and Operational Objectives and Priorities**
  - **Funding Limitations**
  - **DOE Risk Profiles**
  - **Limits on Workforce Agility**



# Cost Savings

- **Combined Maintenance and Operations Administrative Support**
- **Redistributed Engineering Resources Across Project**
- **Combined Maintenance Resources Across Like Facilities**
- **Shared Resources Between SWOC Facilities**
- **Reduced Waste Volumes in Storage**
- **Reduced Size and Number of Radioactive Material Areas**



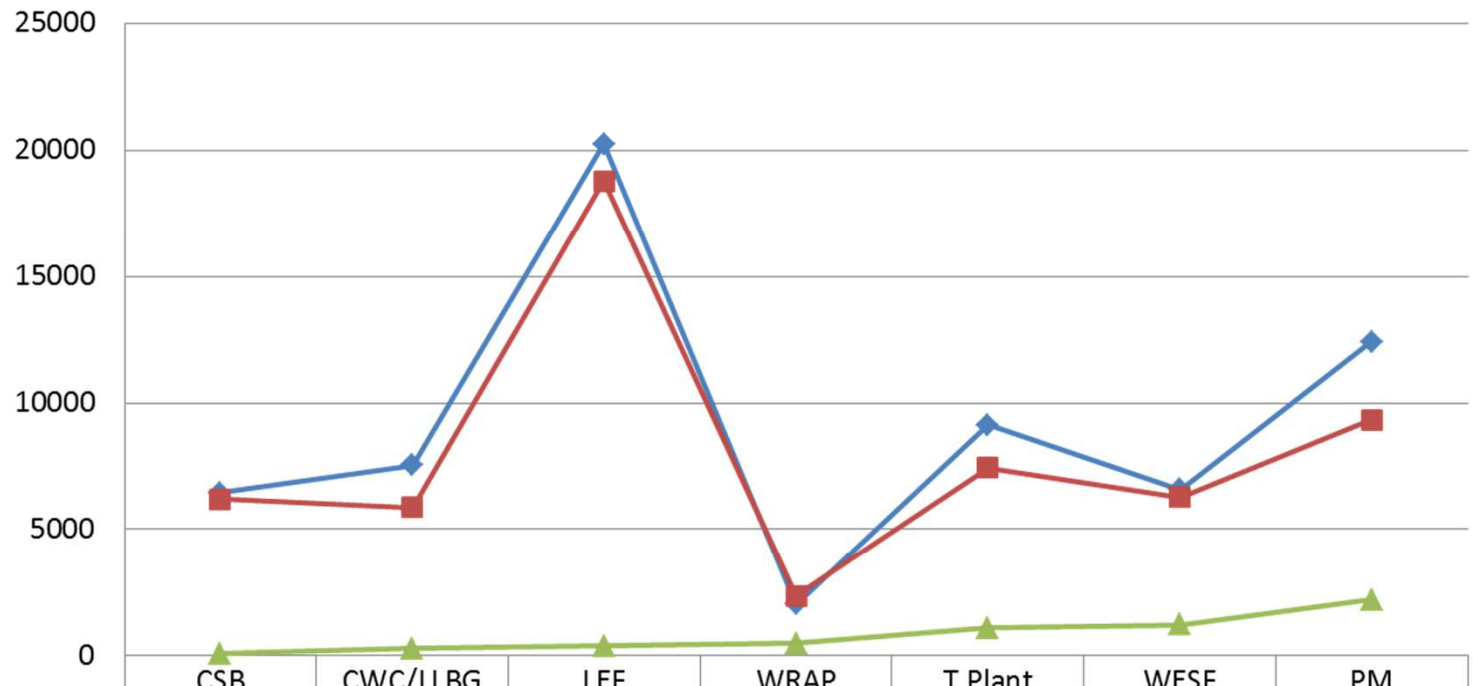
# Cost Savings come at a Price - Risk

- **Potential Loss of Breadth and Depth of Available Resources**
- **Lengthened Response Time to Emergent Issues**
- **Inability to invest in Critical OFIs**
- **Potential Single-Point Failures or Non-Compliances Due to Resource Scarcity**
- **Limited Cross-Training Capability**
- **Reduced Capability to Respond to Changes in DOE Priorities**



# Efficiencies in Action

Chart Title



◆ FY13 Budget (\$K)	6458.9	7547.7	20241.8	2034.8	9134.9	6579.8	12424
■ Adjusted (\$K)	6209.2	5879.2	18767.2	2371.3	7441.2	6271.2	9320.7
▲ Cummulative Savings (\$K)	93.6	292.2	394.1	483.4	1087.9	1214.4	2221.1

# Results

Planned Efficiencies							
Facility/ Mission	Action/ Status	Resource Optimization	Combined Admin. Functions	Eliminate Redundant Resources	Reduce S&M Areas	Combine Maint. & Admin. Resources	Provide Project-Wide Support
PM	Consolidation	●	●	●			●
CSB	Min Safe	●				●	●
CWC/LLBG	Min Safe	●			●	●	●
LEF	Min Safe	●				●	●
WRAP	No Funded Mission			●	●	●	●
T Plant	No Funded Mission	●			●	●	●
WESF	Min Safe	●		●		●	●
		Planned Annual Savings			Actual Savings 1 <sup>st</sup> QTR FY13		
<b>Total Savings</b>		<b>\$8926.4K</b>			<b>\$2221.0K</b>		