

The logo features two curved lines, one blue and one green, arching over the text. The text 'ENERGY SOLUTIONS' is centered, with 'ENERGY' in blue and 'SOLUTIONS' in white. Two horizontal lines, one blue and one green, extend from the left and right sides of the text.

ENERGY SOLUTIONS

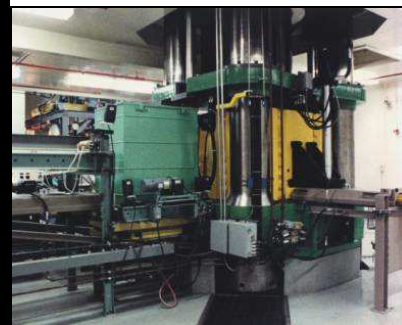
Waste Processing Capabilities

WM13 Symposium

February 2013

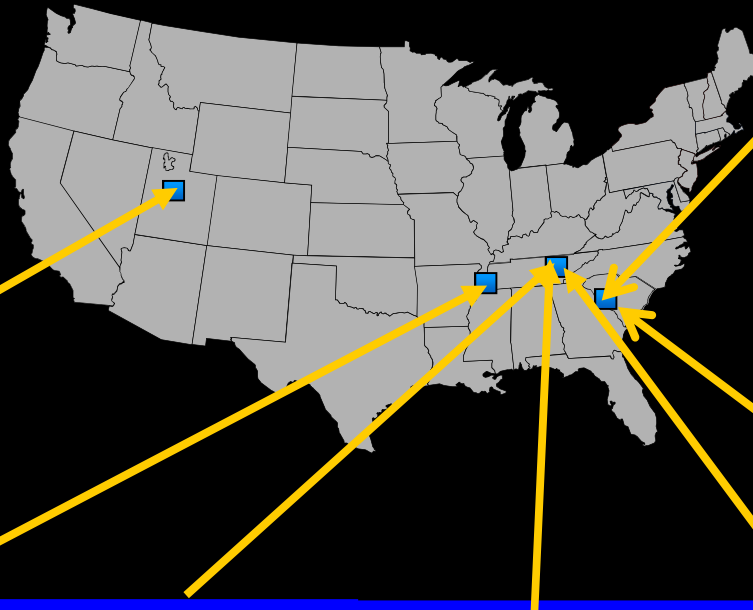
Core Services

- Combined Processing and Disposal for Low-Level and Mixed Low-Level Wastes
- Unique Recycling Capabilities
 - Metal melt recycling
 - Depleted Uranium
 - Lead
- High Activity Waste Processing
 - Filter Shredding
 - SempraSafe Resins
 - NNSS Certification
- Unique Transportation Casks



Facilities

- Six (6) Licensed Operations Facilities
- Two (2) Disposal Facilities



Clive Treatment & Disposal
Clive, Utah



Chem-Nuclear Disposal
Barnwell, SC



Barnwell Processing
Barnwell, SC



Memphis Operations
Memphis, TN



Gallaher Operations
Kingston, TN



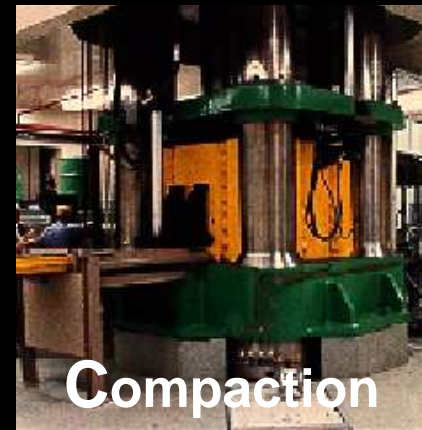
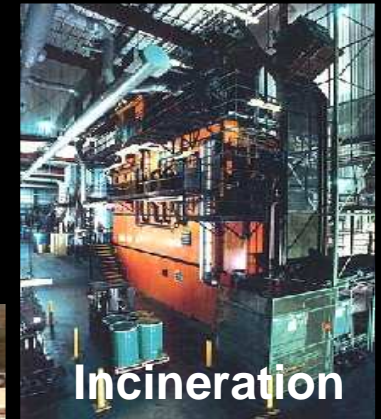
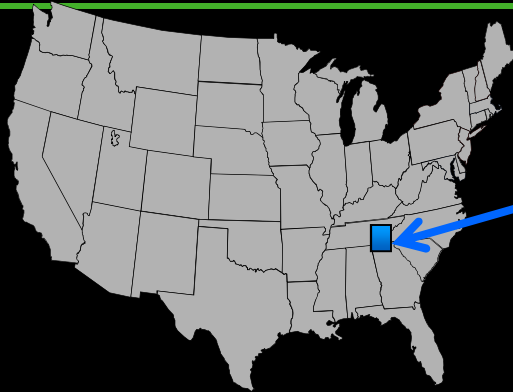
Bear Creek Operations
Oak Ridge, TN



Manufacturing Sciences
Oak Ridge, TN



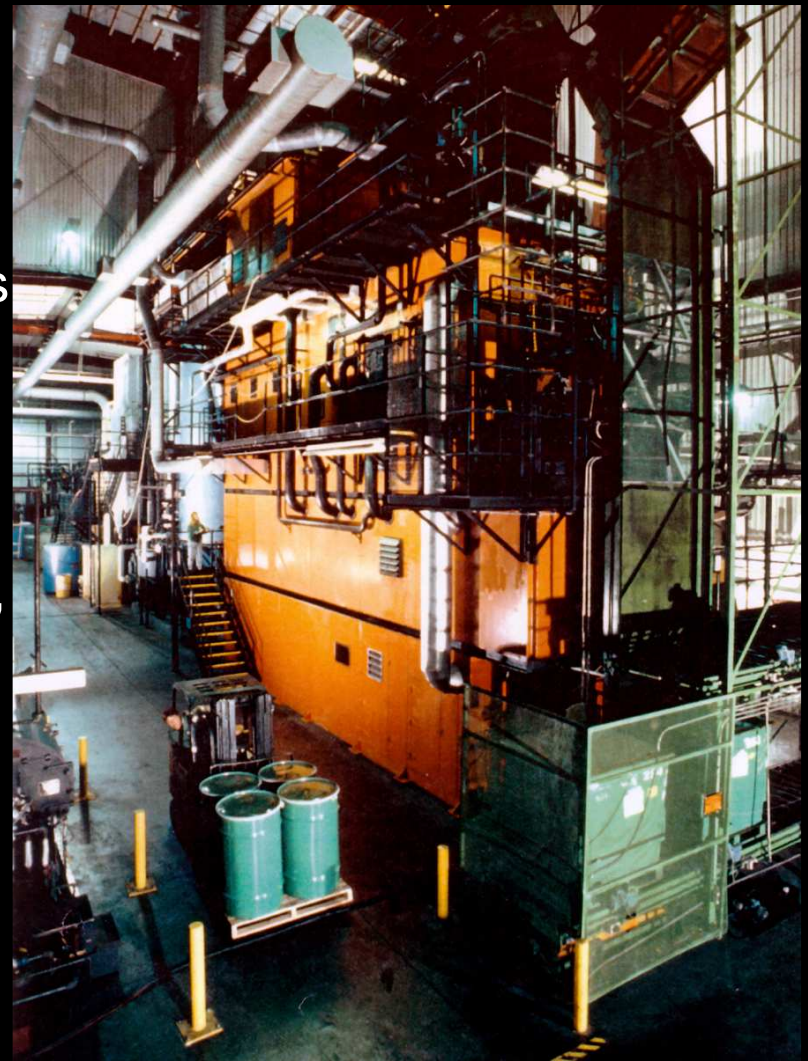
Bear Creek Processing Facility



- Incineration
 - Solids, Liquids, Oils, Sources, and Sludges
- Compaction
- Metal Melt Furnace
 - Produce 20K Pound Shield Blocks
- Lead Casting/Recycle
- Commercial Certification
- NNS MLLW Certification
- Mixed Waste Treatment Permit

Bear Creek - Incineration

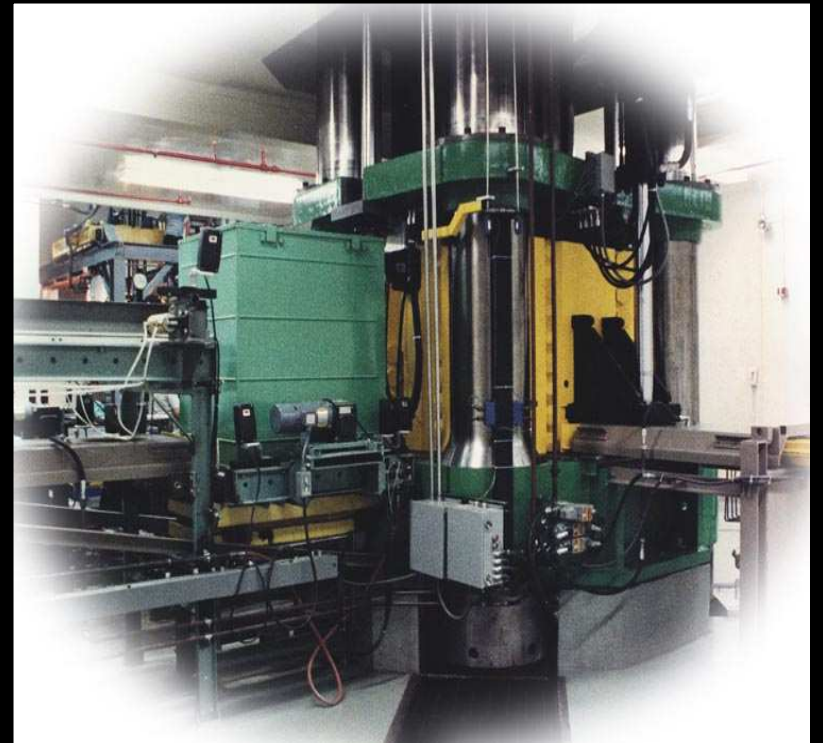
- Two Units each with a capacity of 1600 lbs/hour
- Processing: DAW, Solids, Oils, Sludges, Animal Carcasses and Liquids
- Incineration of low-activity sources
- Process and Return of Ash Campaigns, if requested
- Average Volume Reduction >100:1



Bear Creek - Compaction



- Largest LLW Compactor in U.S.
- EnergySolutions' Compactor delivers a force of 10 million pounds
- Since 1986, the Compactor has processed over 125 million pounds of LLRW
- Average Compaction for DAW of 6:1
- High Activity Waste Volume Reduction



Bear Creek - Metal Melt



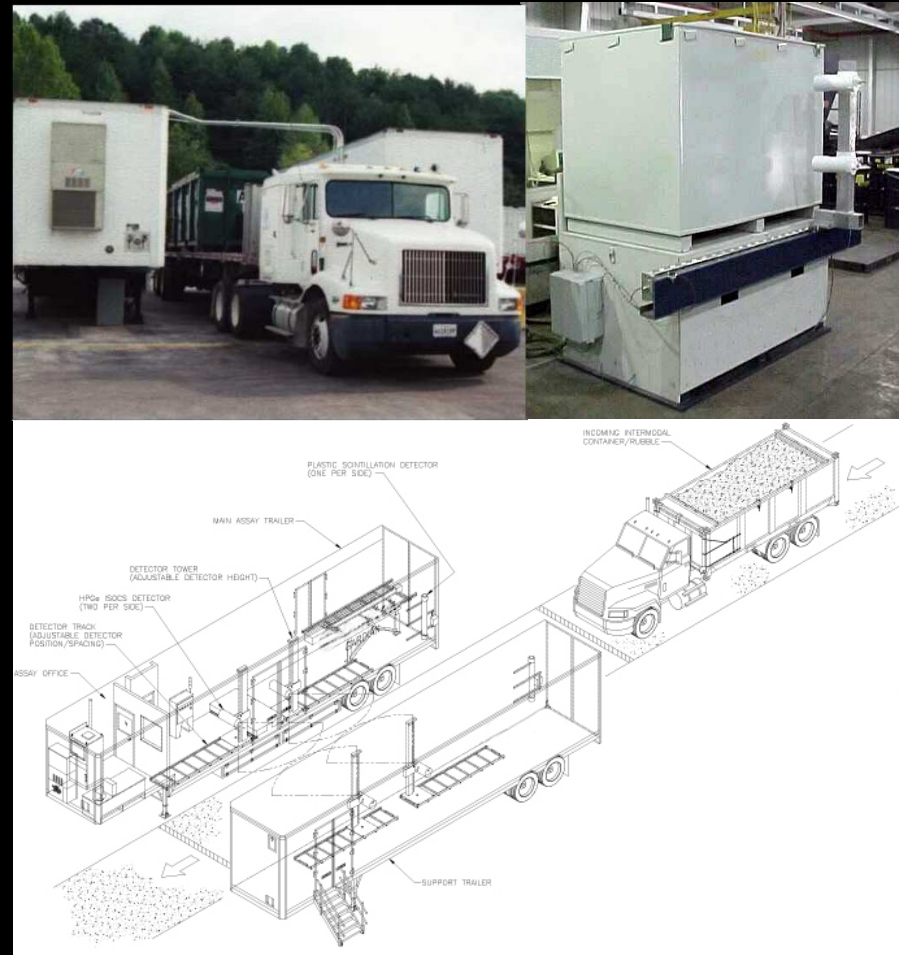
- Capacity: >10M lbs per year
- Products (Beneficial Reuse: All products back to nuclear industry)
- Carbon, Stainless, Aluminum, Copper, Brass, and Bronze



Bear Creek - Bulk Survey for Release



- Volumetric Assay of Low Activity Wastes
 - DAW
 - Resin
 - Sludge
 - Concrete
 - Soil
- Accepted Geometries of Drums to Intermodals



Transfer Station Operations

- Low Activity DAW and Metals “Commercially Certified” for Clive disposal replacing Incineration and Compaction
- Customer Benefit:
 - Speed of processing/disposition (less than 45 day average to disposal)
 - Energy Solutions waste profiles and GSAP permits used
 - Rail delivery
 - 100% visual and radiological inspection



Lead Casting/Recycling

- Outlet for contaminated lead recycling
- Products for sale to the nuclear industry:
 - DOT Type A Packages
 - Process Shields for Liners
 - Specialty Shields for Accelerators
 - Transfer Bells



Bear Creek – MLLW Treatment



- Treatment Technologies Include:
 - Macroencapsulation
 - Waste Sorting and Segregation
 - Size Reduction
 - Amalgamation
 - Chemical Reduction
 - Deactivation
 - Neutralization
 - Stabilization/Solidification
 - Recovery of Organics
 - Carbon Adsorption
 - Chemical Oxidation
 - Precipitation
- Services Combined with NNSS Certification



Bear Creek -Instrumentation Service

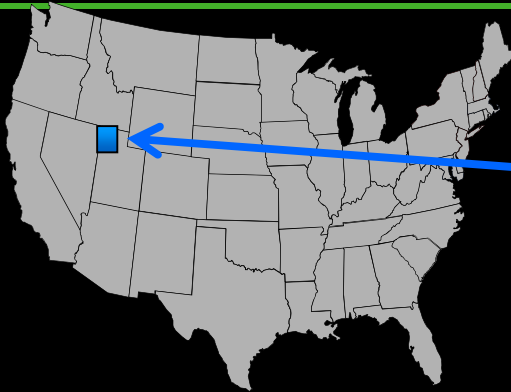


- Calibration/Repair of Customer Owned Equipment
- Rental of EnergySolutions Provided Equipment



- Our site can be directly accessed via <http://shopping.netsuite.com/instrumentation> or via the company home page (via Customer Portal/Instrumentation at www.energysolutions.com).

Clive Treatment and Disposal Facility



Clive Treatment &
Disposal
Clive, Utah



TDX Associates, LLC

- Class A LLW Disposal
- MLLW Treatment
 - Macroencapsulation
 - Stabilization
 - Vacuum Thermal Desorption
 - Liquid Stabilization
- MLLW Class A Disposal

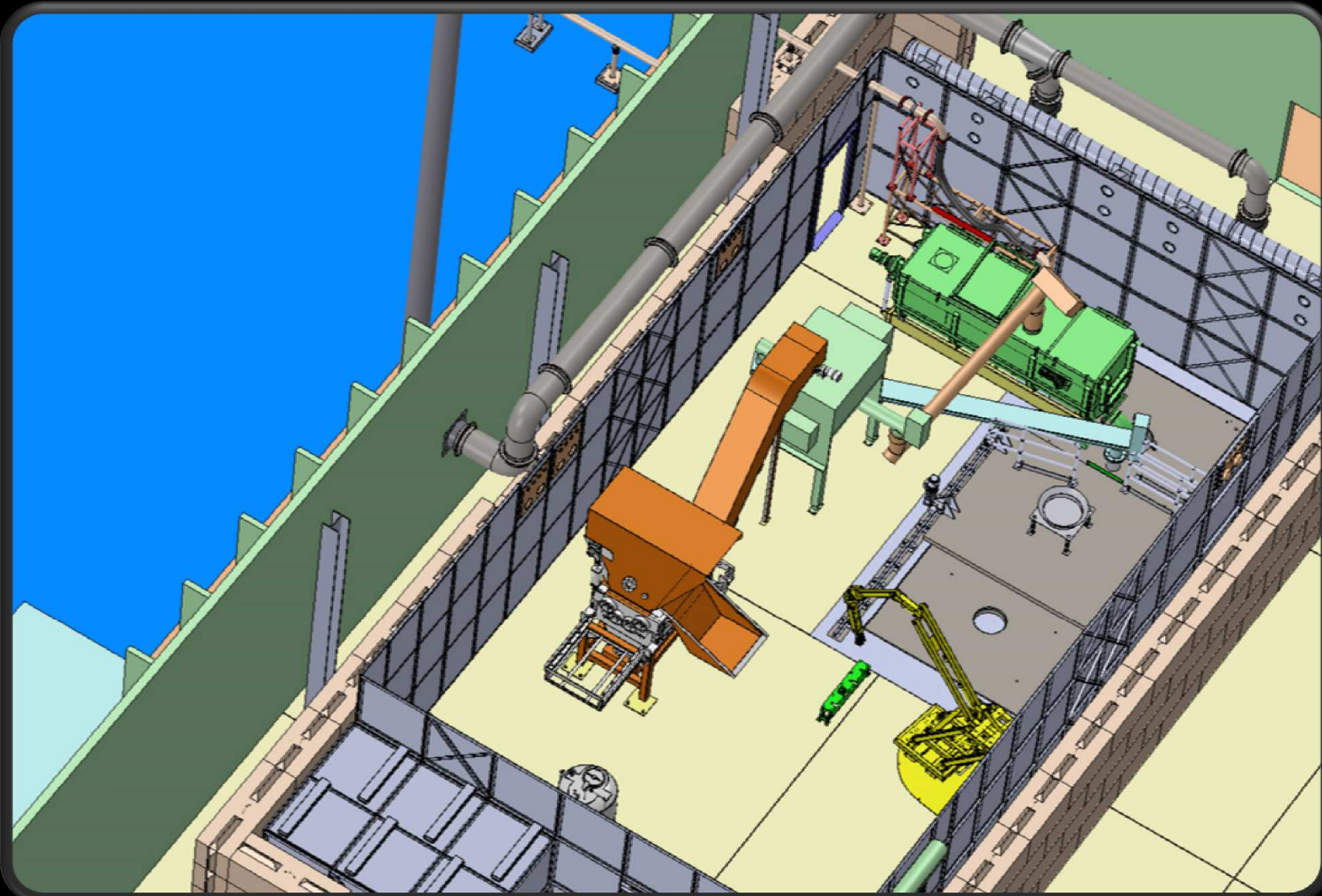


Barnwell Processing Facility

- 17-acre facility that consists of two primary buildings
 - 101 – 7,500 ft²
 - 201 – 20,000 ft²
- Services provided
 - High Activity Filter Shredding
 - Volume reduction
 - Dewatering
 - Compaction
 - Decontamination
 - Water processing
- The BPF shares a common boundary from the west with the Department of Energy Savannah River Site



Barnwell Processing - Filter Shredding



SEMPRASAFE



- EnergySolutions and Studsvik combined expertise to form a joint venture called SEMPRASAFE
- SEMPRASAFE combines EnergySolutions' capabilities for disposal and waste-management logistics with Studsvik's world-class waste processing capabilities to address disposal of high activity spent ion-exchange resins
- Utah DRC granted EnergySolutions approval to dispose of up to 40,000 ft³ per year of processed resins
- In 2012, SEMPRASAFE received over 10,000 ft³ of resins for processing
- SEMPRASAFE continuing to grow in 2013



Manufacturing Sciences Corp. – DU Recycling



- Accepts Metallic DU for recycling
- Fabrication of Casks, Boxes, Shields & Assemblies
- MSC is currently processing specialty metals for:
 - Aerospace
 - Wireless telecommunications
 - Metals manufacturing
 - Nuclear applications



Energy Solutions

*Providing safe solutions for the processing and
disposition of
low-level radioactive material*