



# THE TEXAS SOLUTION

Waste Management 2013

February 26, 2013

Daniel D. Burns



- Not yet operating at WM last year
- First waste April 2012
- First Import Approved June 2012
- Began full scale operations in July 2012







## Safety Record

- Continue Outstanding Safety Performance

## Efficiency

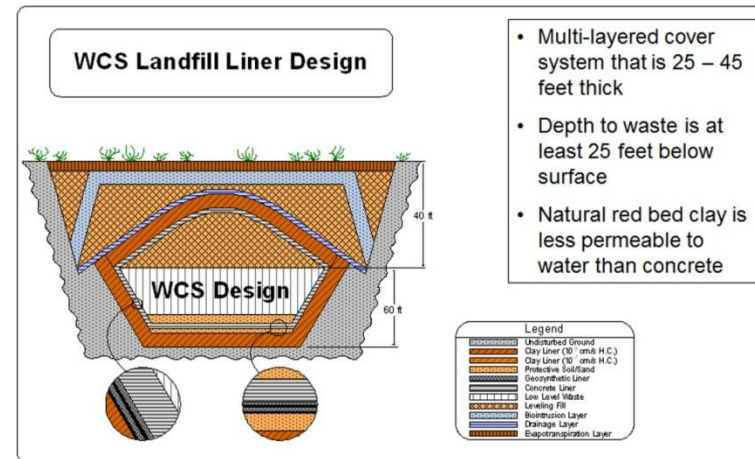
- Cask operations average 3 hours
- RAM operations average 1.5 days
- Highest Dose Rate Liner 11,000 R/hr (TVA)
- Continue to lower job dose
- Zero Demurrage charges to date
- Zero DOT or Regulatory infractions





# A Little Different Disposal

- State of the Art Design
- Unequaled Environmental Protection
- Risk Management
  - Waste Transfer
  - Immediacy
    - Hours compared to months, potentially years







THE TEXAS SOLUTION

# *A Little Different* Comprehensive Services

By-Product Waste  
Facility

Federal Waste  
Facility

Compact Waste  
Facility

Processing and  
Treatment Facilities

RCRA and Exempt  
Waste Disposal



# *A Little Different* Comprehensive Services

## Treatment and Processing

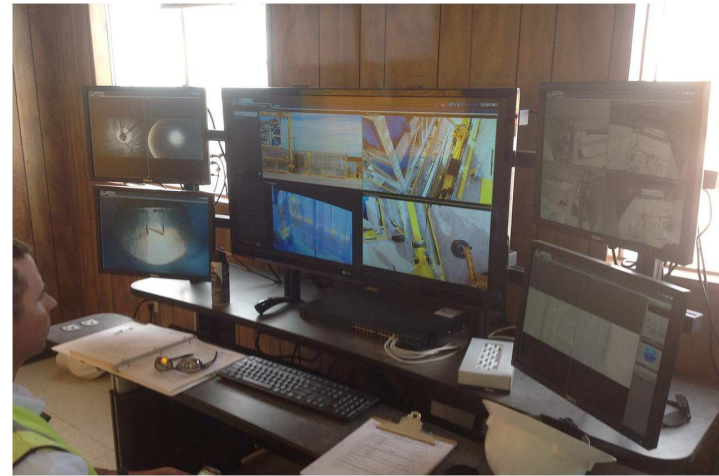
- MLLW
- Conditioning
- Size and Volume Reduction
- Sorting and Segregation





**WCS**  
THE TEXAS SOLUTION

# A Little Different State of the Art Equipment





- Organization and Staff
- Customer Service
- Dependability
- Focused Services
- Customer Interaction
- Life Cycle Waste Management
- Working for even more trust from our County, State, and stakeholders





THE TEXAS SOLUTION

# Moving Forward

- TCEQ Capacity Report
- Amendments
- PA and Curie Limitations
- Enhanced and New Services
  - Conditioning
  - Type B Casks
  - Class A Compact O&M waste
  - Integrated Disposal
  - Others?





Comments,  
Input,  
Questions

Daniel D. Burns

[dburns@valhi.net](mailto:dburns@valhi.net)

(214) 662-5422