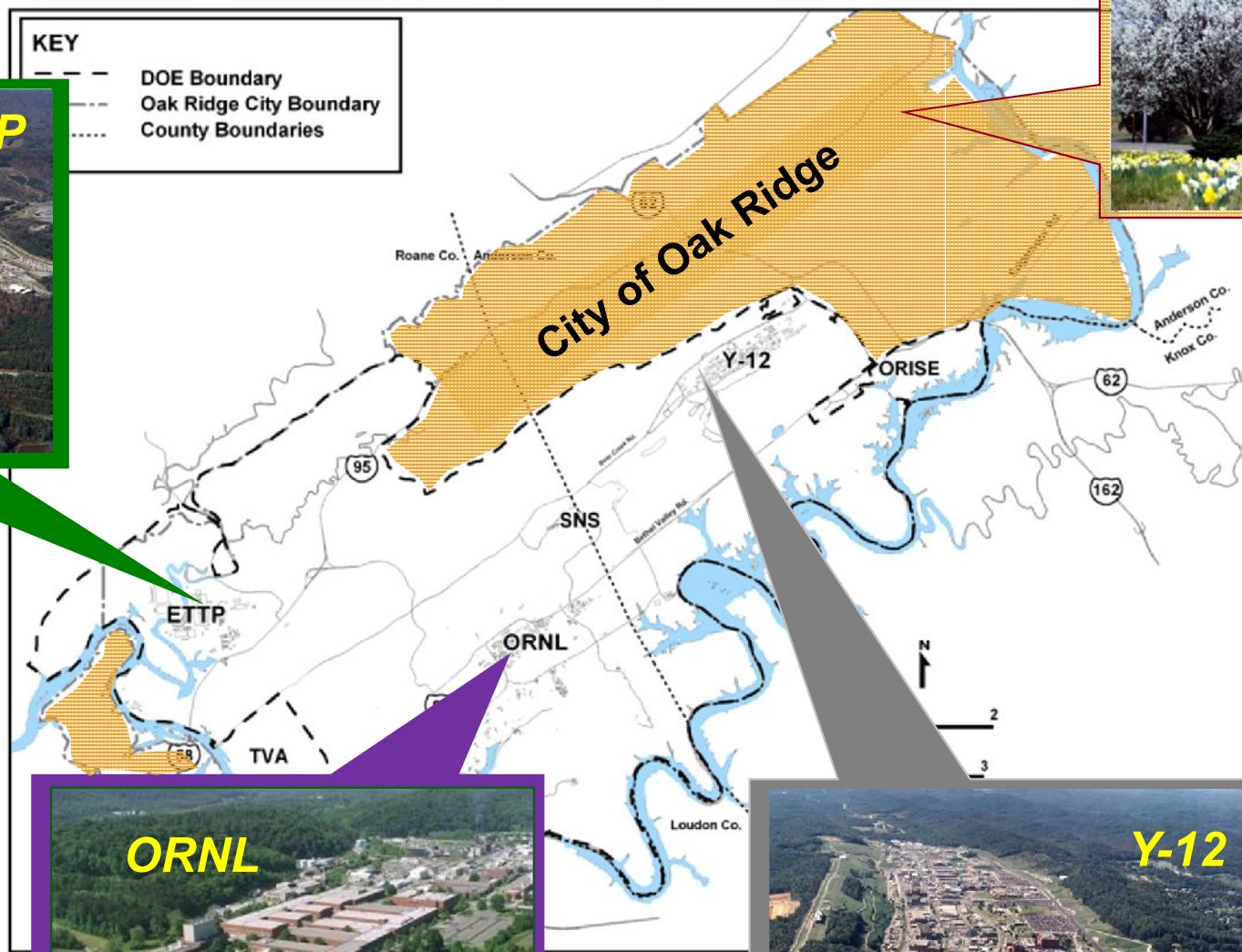


Clearing Environmental Barriers to Future Economic Growth

**Sarah Roberts, CHP
Vice President and Director
ORAU**



Oak Ridge Reservation



MOVING TO THE FUTURE BY CLEANING UP THE PAST



Oak Ridge Reservation Description

DOE manages the 33,700 acre Oak Ridge Reservation.

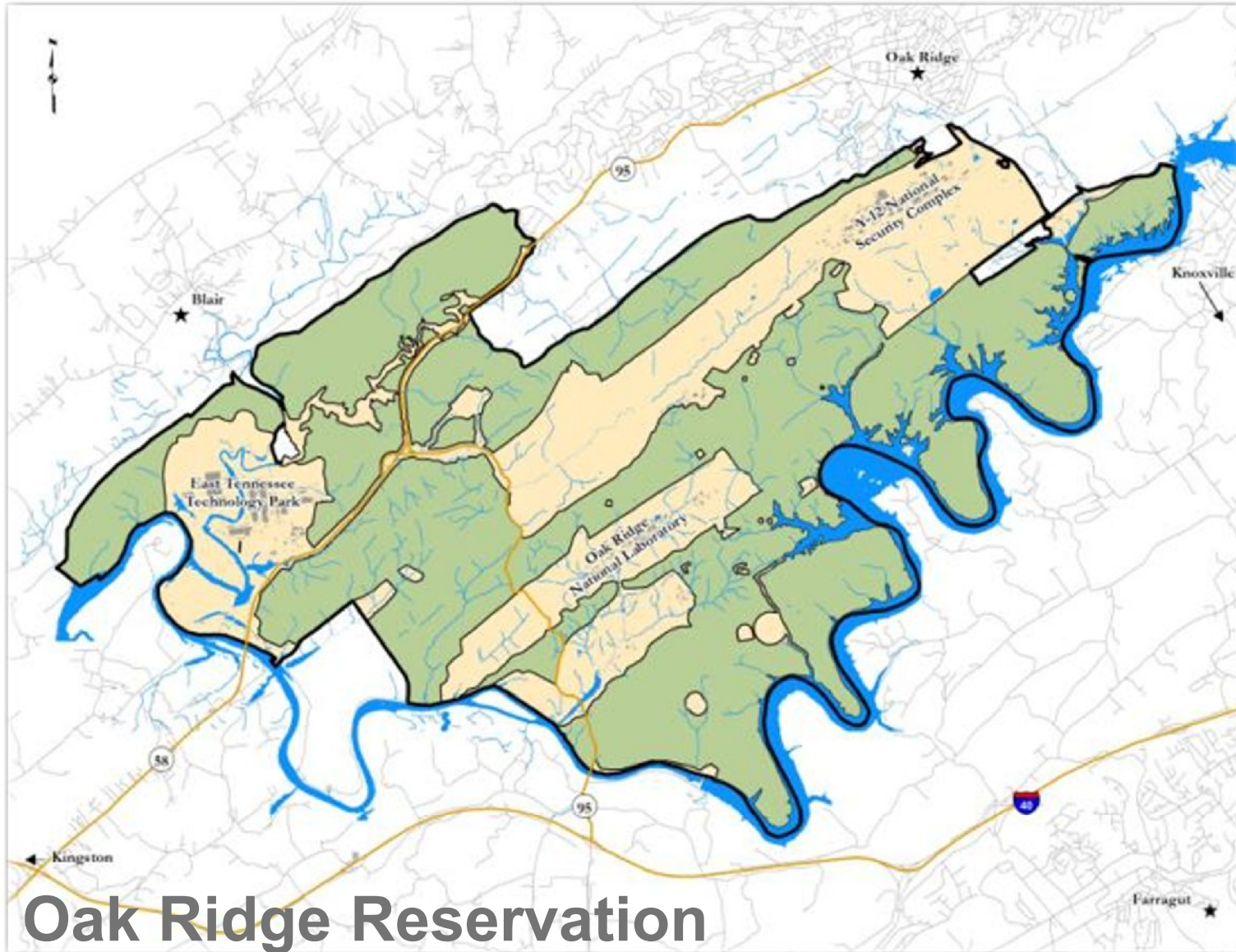
13,300 acres

20,400 acres



MOVING TO THE FUTURE BY CLEANING UP THE PAST

Parcels Presumed Clean or Contaminated



Oak Ridge Reservation



MOVING TO THE FUTURE BY CLEANING UP THE PAST

Reservation Cleanup: Agencies, Laws & Lists

- 1989: **entire** Oak Ridge Reservation placed on the EPA's National Priorities List and the Federal Facility Agreement
 - Sites needing non-urgent remedial response action listed on EPA's National Priorities List (NPL)
 - Comprehensive Environmental Response, Compensation and Liability Act of 1980, known as CERCLA or Superfund
 - Federal Facility Agreement (FFA) signed – DOE, the EPA, and the Tennessee Department of Environment and Conservation



MOVING TO THE FUTURE BY CLEANING UP THE PAST

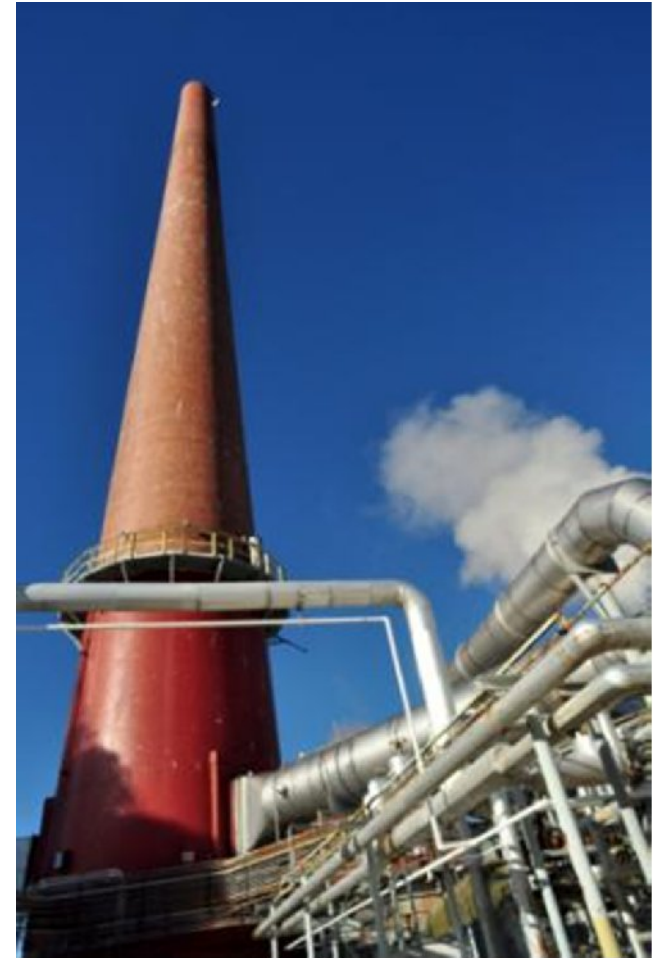
National Priorities List Site Clarified

- Subsequently, EPA clarified that NPL sites **include only contaminated areas**
- Up to 20,400 acres **should not** have been considered part of the NPL or listed in the FFA



NPL/FFA Dilemma

- Buffer parcels listed on the FFA as presumed contaminated
- There is no guidance for removing uncontaminated areas
- DOE must demonstrate which areas are clean
- FFA parties collaborating to amend the reservation's NPL Site boundary and the FFA to reflect only areas needing CERCLA decisions



Improved Economic Growth



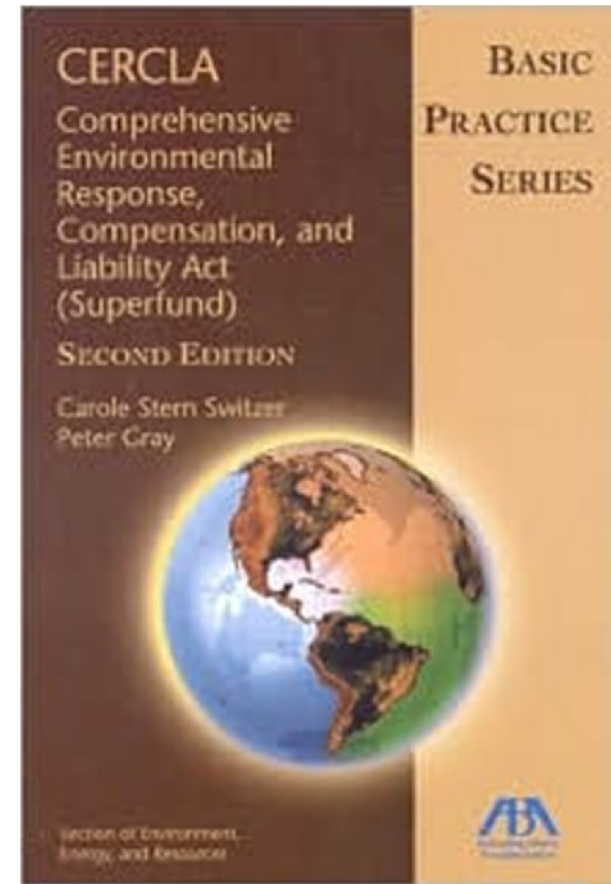
- Majority of private sector business located on former DOE property are associated with DOE activities
- Reducing the perception of environmental risk allows our strengths to take center stage

Significant opportunity for regional economic growth



Process to Redefine NPL Site Boundary

- FFA parties adopted the concepts outlined in the CERCLA Section 120(h) process
- Transfer not applicable in case of NPL boundary program
- Provides a cost-effective model by which reservation parcels could be demonstrated to be uncontaminated



Parcel Evaluation Process



Historical reviews dating back to pre-Manhattan Project construction



Remote sensing, on-the-ground anomaly investigations, and soil/sediment sampling



Groundwater modeling and sample collection



Comparison of data to background and other conservative screening levels

Parcel Evaluation Process



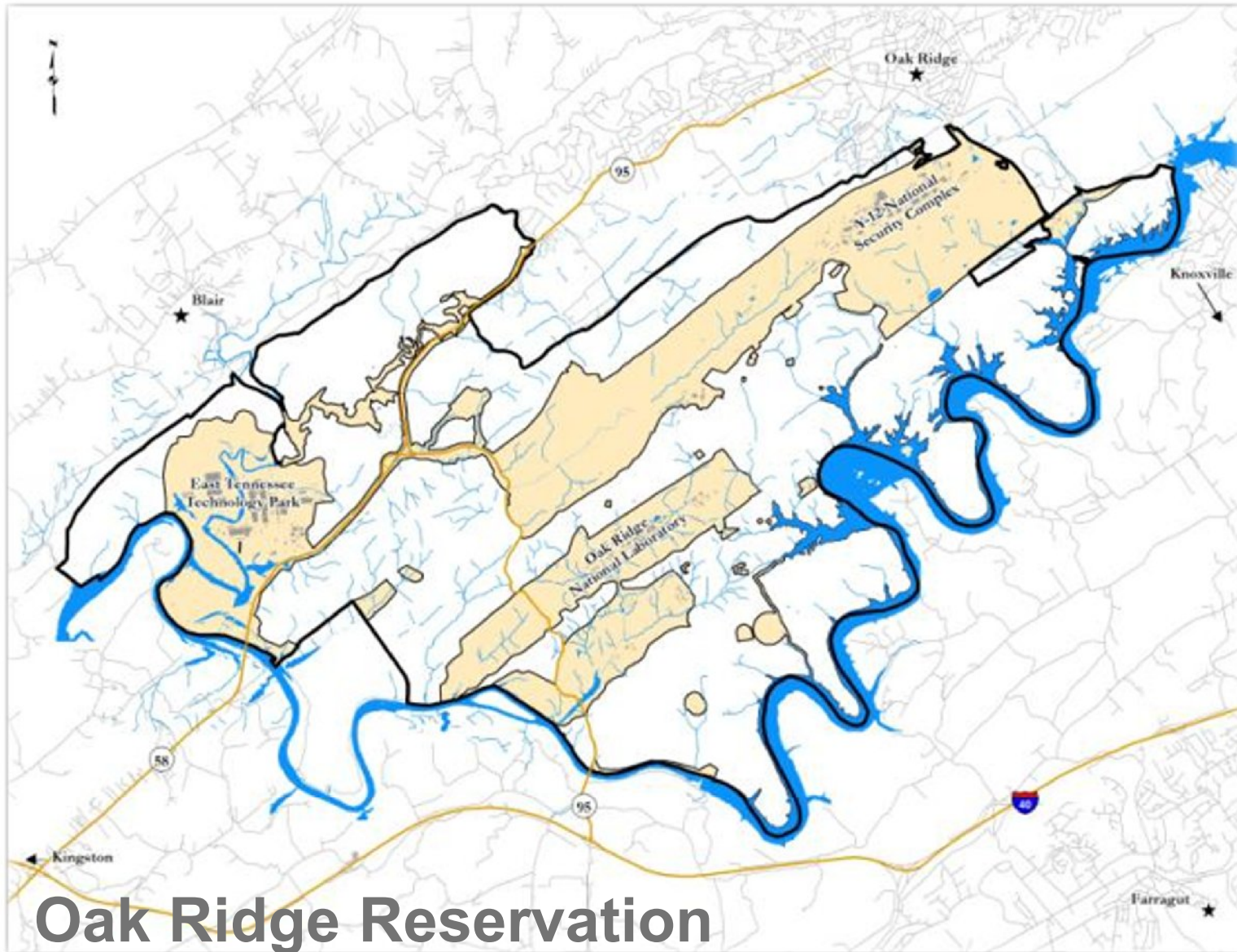
Current Status and Next Steps

- ~ 20,000 acres expected to be no longer included in NPL by early 2013

By early 2013, the NPL site and FFA responsibilities may encompass only 40% of the original footprint.



2013 Vision



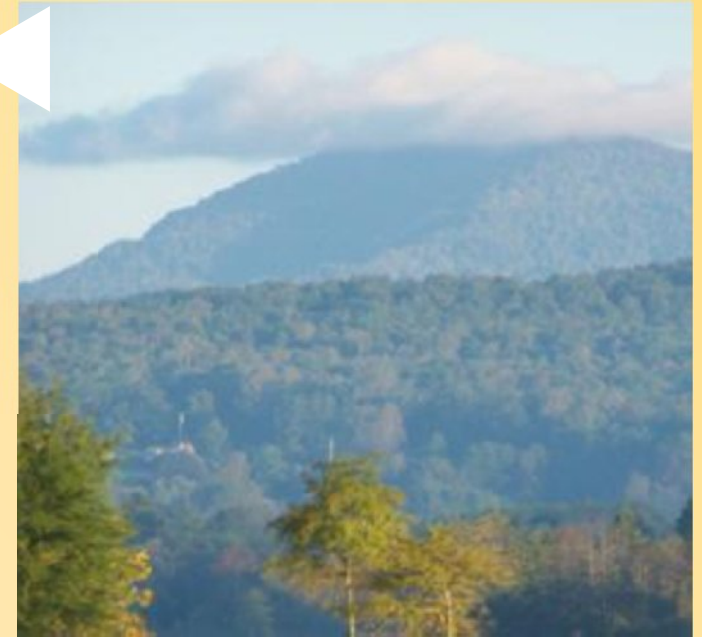
Oak Ridge Reservation



MOVING TO THE FUTURE BY CLEANING UP THE PAST

What Really Matters

When up to 20,400 acres are no longer listed as potentially contaminated in the FFA and on the NPL...



...Oak Ridge will be better equipped to attract businesses and residents.



MOVING TO THE FUTURE BY CLEANING UP THE PAST