

# Portsmouth Gaseous Diffusion Plant *Decontamination & Decommissioning*

---





**Menu**

**TIMELINE CONTROLS**

Load Planned Terrain  
 Hide Legend  
 Turn Screen Off  
 Turn D3D Boundary On  
 Home View

**FACILITY INDEX**

ID	Facility View
Site	Planned Screen 03 View
BuildUp	Southeast View
Trucks	Northwest View
Landfill	North Access Road View
Wastewater	South Access Road View
OTDCA	Overhead View
Flares	0-00
Roofs	0-000
Utility Road	0-02
Storage Tanks	0-02
MSW	0-03
Control System	0-03
	0-04
	0-05
	0-06
	0-07
	0-08
	0-09
	0-10
	0-11
	0-12
	0-13
	0-14
	0-15
	0-16
	0-17
	0-18
	0-19
	0-20
	0-21
	0-22
	0-23
	0-24
	0-25
	0-26
	0-27
	0-28
	0-29
	0-30
	0-31
	0-32
	0-33
	0-34
	0-35
	0-36
	0-37
	0-38
	0-39
	0-40
	0-41
	0-42
	0-43
	0-44
	0-45
	0-46
	0-47
	0-48
	0-49
	0-50

# Safety

## 1 Safety - Total FBP/Subcontractor Injuries

Injuries

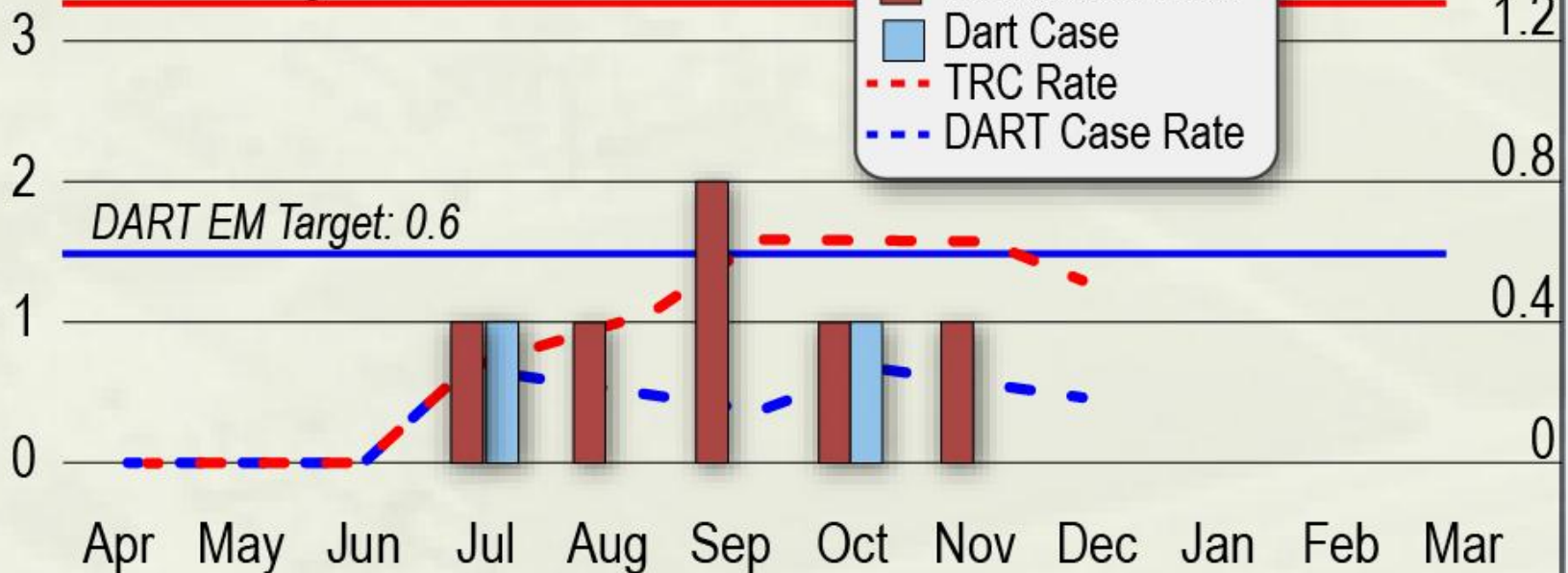
Injuries Legend

Rate

TRC EM Target: 1.3

DART EM Target: 0.6

- Recordable Case
- Dart Case
- - - TRC Rate
- - - DART Case Rate



# Emerging Issues

---

## Streamlining

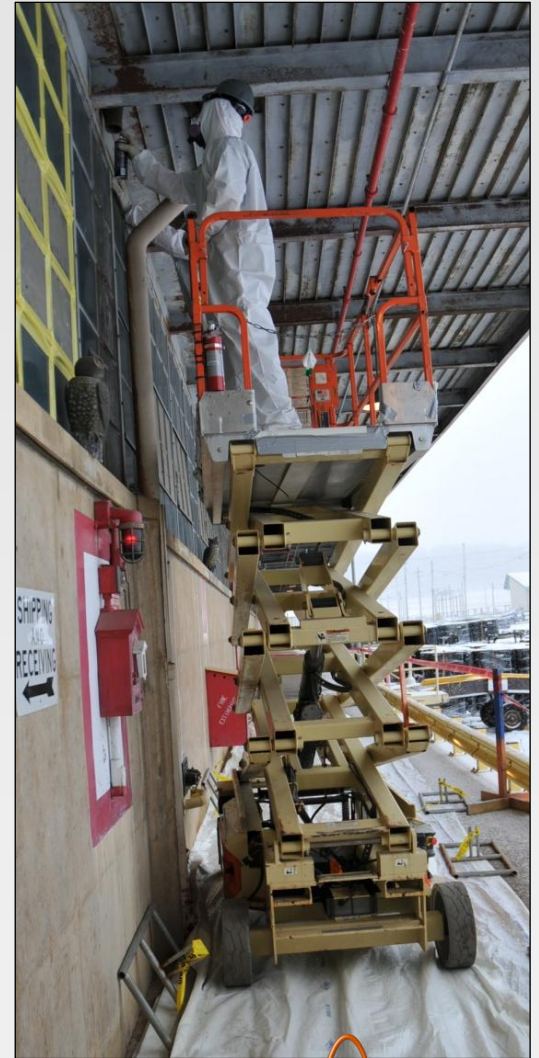
- Former leased facilities returned from NRC Regulatory Control to DOE on Oct. 1.
  - BIO for newly de-leased facilities
  - DSA for ongoing DOE activities
  - Two sets of programs and procedures
- Moving to a single set of procedures & processes



# Emerging Issues

## Mortgage Reduction

- Lowering mortgage expenses to fuel D&D
  - At turnover to DOE, 60% of expenditures are for support costs including:
    - ✓ Utilities
    - ✓ Surveillance & Maintenance
    - ✓ Services to DUF6 & ACP



# Emerging Issues

---

## Mortgage Reduction Continued

- FY12 Focus:
  - Redistribute / Right Size Infrastructure
    - ✓ Boiler Plant
    - ✓ Laboratory
    - ✓ Switchyards
    - ✓ Water Treatment
  - Modernize Systems Including IT, Communications, Project Controls, HR, Accounting, and MC&A Systems



# Emerging Issues

## Stable Funding

- Predictable funding key Component of successful Project
  - FY13 Project Request Level will be a challenge
  - Continuation of uranium barter



# Emerging Issues

---

## Regulatory Decisions

- Aligned with regulators to accelerated decision-making processes
  - Pulling back decisions 24 to 36 months
- All major decisions planned for next 12-15 months
  - Cleanup levels
  - No further use of facilities
  - On or off site disposal
  - Land use





# Successes

---

## Successful Transition & First Year

- Safety performance has been excellent
- Completion of detailed life cycle baseline
- GDP successfully returned to DOE
- Positive working relationship with regulators; Key Decisions on track for this year.
- Early successes in waste shipping and recycling
- Deactivation underway; Cut, cap and removal of X-326 process gas components.

