

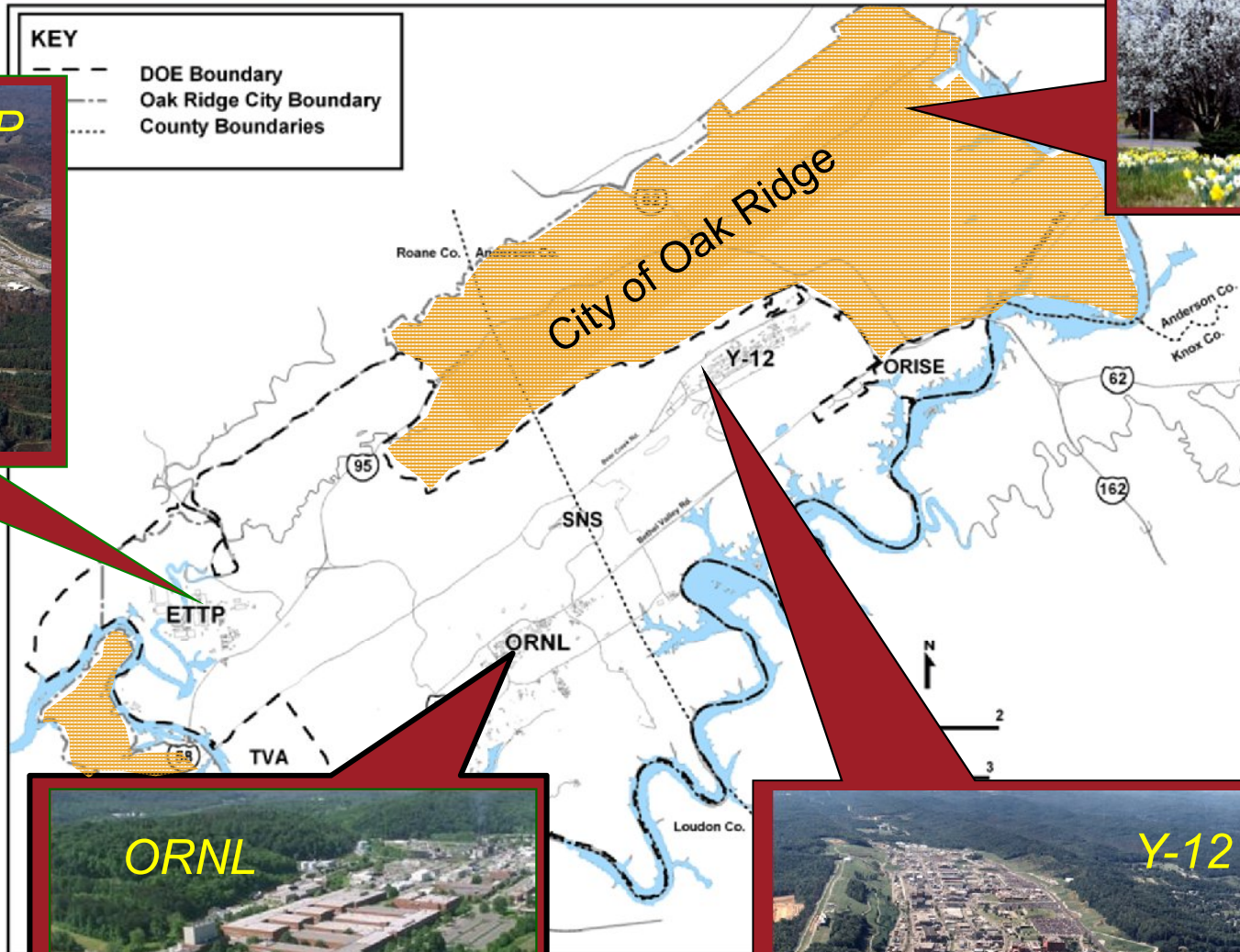
East Tennessee Technology Park “Reducing the Mortgage”

Jim Kopotic, DOE
Mark Ferri, UCOR

February 28, 2012



East Tennessee Technology Park is being cleaned up for private sector use



MOVING TO THE FUTURE BY CLEANING UP THE PAST

East Tennessee Technology Park Mortgage Reduction

- ETTP is an Environmental Management Site
 - No Operational Mission other than Environmental Cleanup and Reindustrialization
- Annual mortgage costs are approximately \$70M (security, surveillance and maintenance, and infrastructure)
- Completion of remedial actions and demolition of large buildings (>100 acre footprint) reduces EM mortgage costs
- End State is a commercial industrial park



Environmental Issues

- Large Old Buildings – radionuclides, PCBs, asbestos
 - Buildings pose a safety hazard to workers
- Burial Grounds – drummed wastes, cylinders, classified components and contaminated soil
- Soils/sediments – chemical wastes (organic and inorganic), radionuclides, PCBs
- Groundwater – Organic solvents & volatile organic compounds (TCE most prevalent)



ETTP CERCLA Areas and RODS

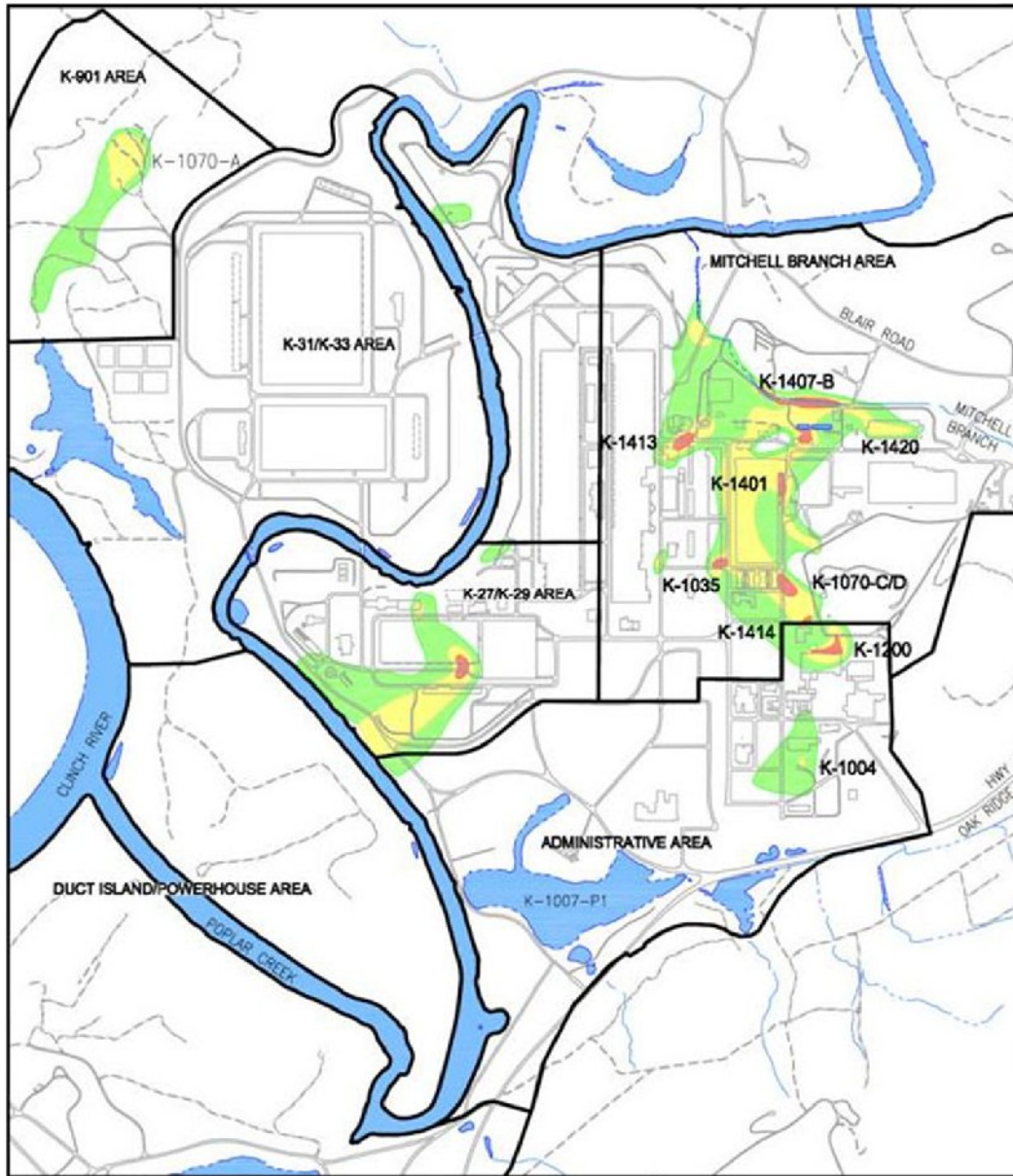


-Interim RODs for Zone 1 & 2 approved

-Zone 1 actions complete

-Zone 2 soil actions to follow building D&D

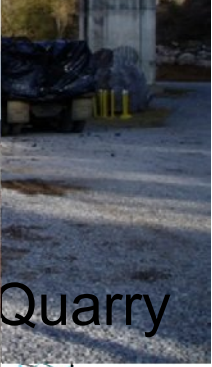
Groundwater



- Final GW ROD being negotiated
- Characterization complete
- Treatability underway

Soil

- Zone 1
• Contaminated



- Zone 2
• Uncontaminated



LEGEND	
	Remediation Complete
	RA Required
	Characterization Required
	Pending Zone 1 Final ROD



THE PAST

East Tennessee Technology Park

K--33 Building



K-25 Building



K-1420 Building



MOVING TO THE FUTURE BY CLEANING UP THE PAST

East Tennessee Technology Park



Building K-25 Demolition Overview

Demo Approach

- Segment East Wing north of Tc99 Units
- Demo proceeds north on East Wing – 2012
- Clear out vaults and demo North End
- Characterize the Tc99 units
- Remove all high Tc99 equipment and piping
- Demo Tc99 units
- K-25 demo complete – 2014



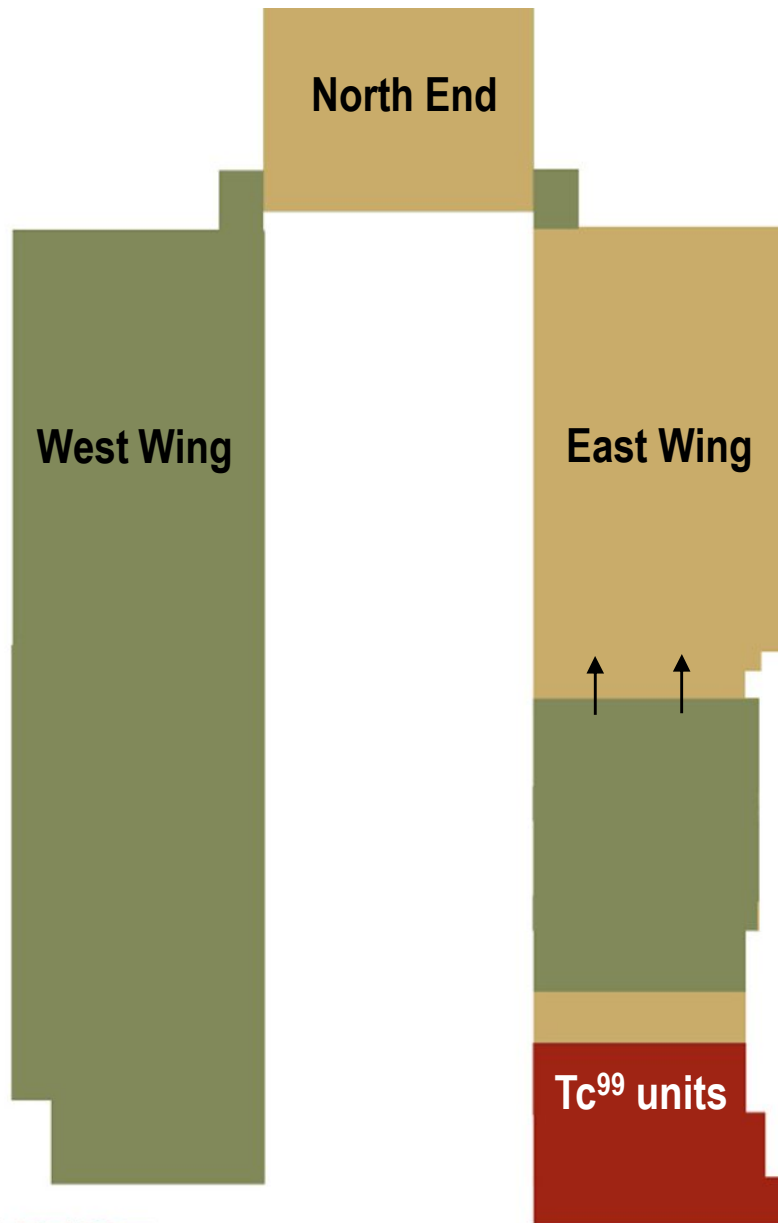
Building K-25 Demolition Overview

Core Strategies

- Assembly line D&D for safety and efficiency
- Distance the worker from the hazards
- Alternatives to foaming reduces fire hazards
- Bounding Characterization for Tc99
- Control Demolition/Pack-as-you-go



Building K-25 Demolition Status



- West Wing and the bridges connecting the wings to the North End have been demolished
- Non-Tc⁹⁹ units in East Wing being demolished



East Wing Segmentation



MOVING TO THE FUTURE BY CLEANING UP THE PAST



Removal of Components During Segmentation



MOVING TO THE FUTURE BY CLEANING UP THE PAST

K-25 Experience & Lessons Learned Applied to K-27

Use K-25-established waste transportation prep and inspection areas

- Existing procedures and personnel improve efficiency and compliance

Use experienced K-25 sampling crews

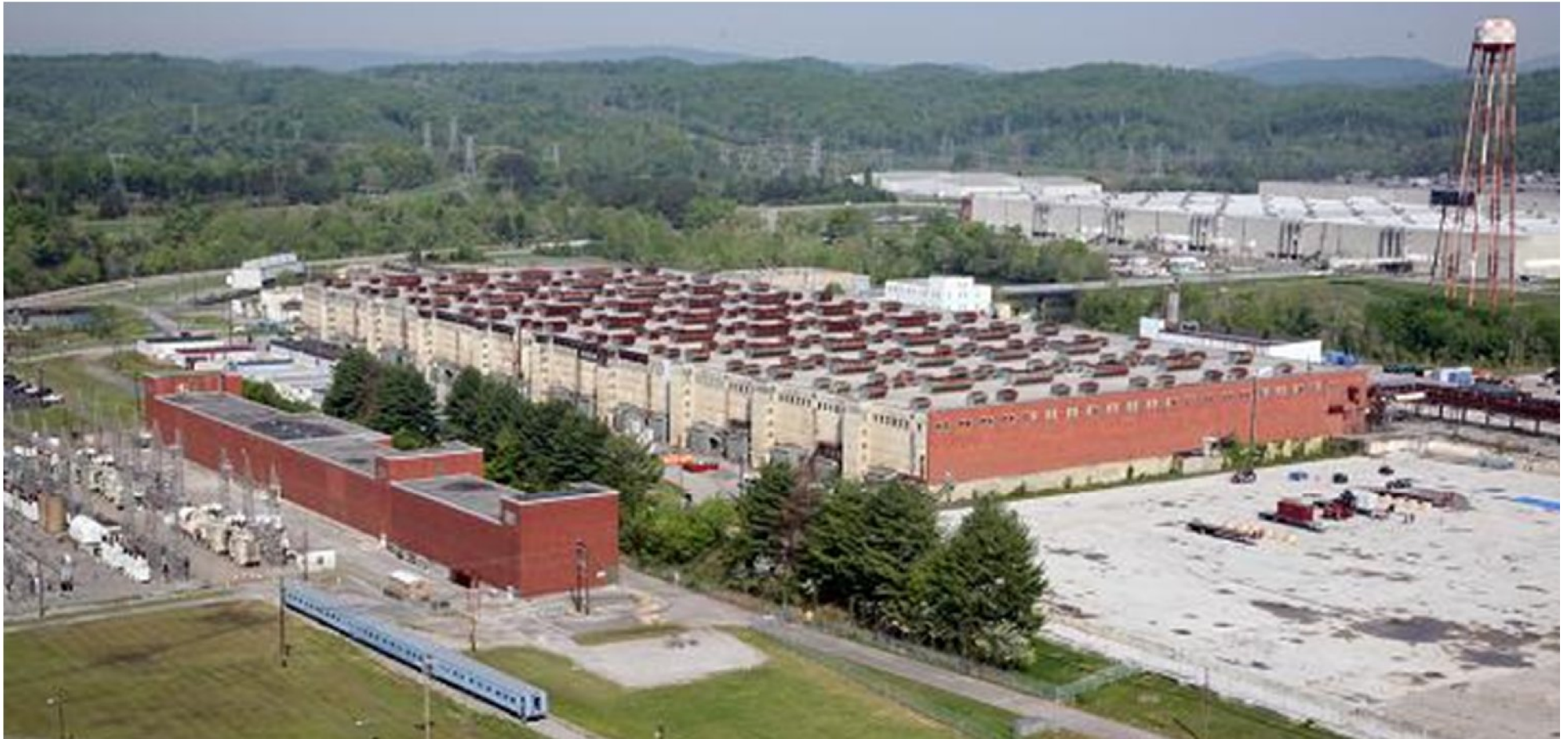
- Bound risks from Tc-99

Experienced work crews are transitioned from K-25

- Proven assembly line approach
- Identical or similar hazards, activities and procedures

G145_r1

Building K-27



MOVING TO THE FUTURE BY CLEANING UP THE PAST

Poplar Creek



MOVING TO THE FUTURE BY CLEANING UP THE PAST



Buildings K-31 & K-1037



K-31 Building



K-1037 Building



MOVING TO THE FUTURE BY CLEANING UP THE PAST

TSCA Incinerator & Central Neutralization Facility



TSCA Incinerator

CNF



MOVING TO THE FUTURE BY CLEANING UP THE PAST



Centrifuge Facilities



MOVING TO THE FUTURE BY CLEANING UP THE PAST

Summary

- Demolished 246 facilities
 - Demolition of Building K-25 on schedule (70% complete)
 - Plan to move crews to Building K-27 as work is completed on Building K-25
- 2.2 million square feet of soil remediated
 - Zone 1 interim actions complete
 - All burial ground excavations complete
 - Zone 2 soil remediation cannot be completed until buildings are demolished
- Groundwater plumes are stable – Volatile organic compounds are the contaminant of concern



EM End State – *Creating Reusable Property*



*Actively creating a
Vision for the Future*



MOVING TO THE FUTURE BY CLEANING UP THE PAST