



# ENERGY *SOLUTIONS*

## Boom or Bust? Perspectives on Treatment Capacity

By Paul Larsen

# Major ARRA Work Areas

- Moab
- Clive Disposal
- Logistics Operations



Clive Disposal

Mound

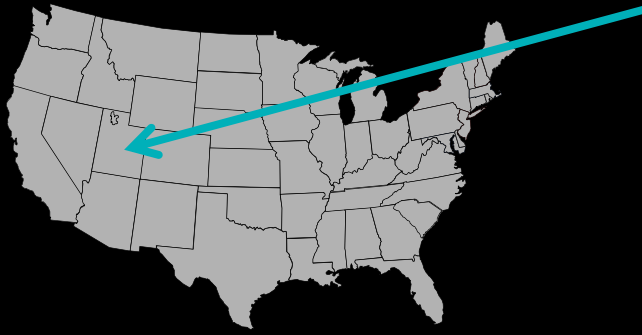
Moab Operations

Bear Creek

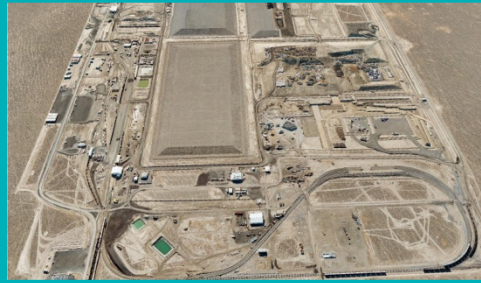
Barnwell Processing

Portsmouth

# Clive Treatment & Disposal



Clive Disposal



- Class A Low-level Waste Disposal
- Mixed Low-level Waste Treatment
- Mixed Low-level Waste Disposal

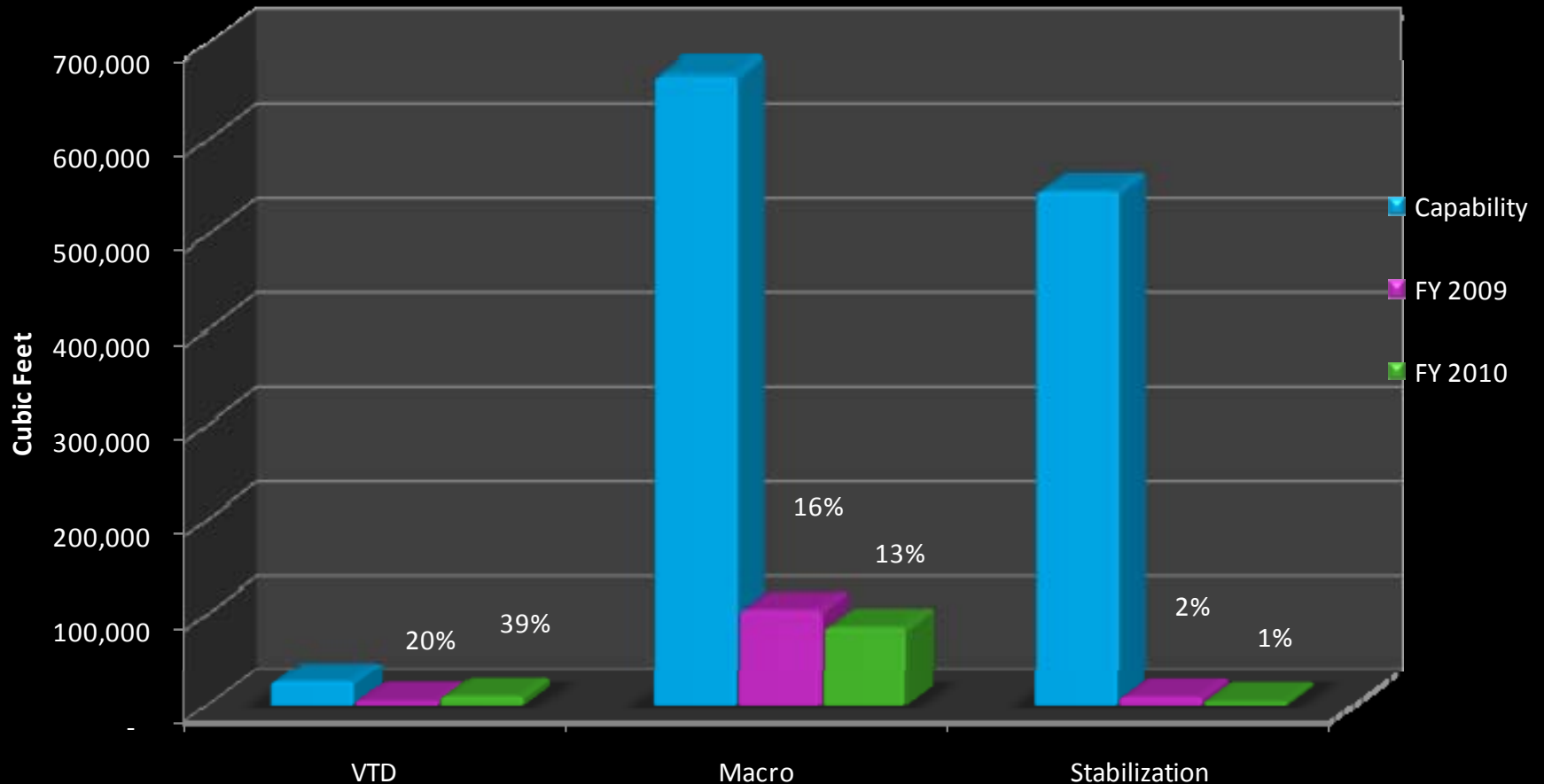


# Clive Operations

- Mixed Waste Treatment and Disposal
  - Stabilization
  - Solidification
  - Vacuum Thermal Desorption (VDT)
  - Macroencapsulation

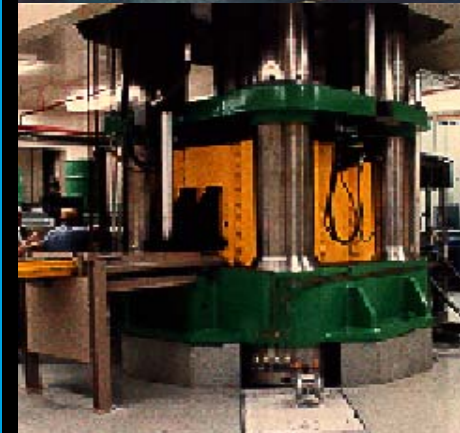
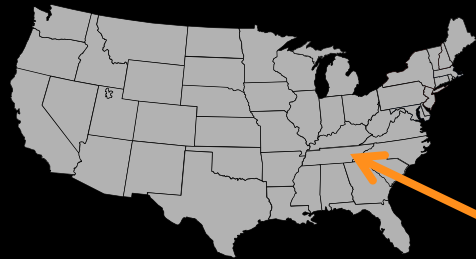


## Clive MWT Estimated Capabilities



# Bear Creek Operations

- Incineration
  - Two (2) Commercial Low-level Radioactive Units
  - Solids, Liquids, Oils, and Sludges
- Compaction
  - Largest LLW Compactor in U.S.
- Metal Melt Furnace
  - Produce 10,000 Kg Shield Blocks for High Energy Physics Labs
- RCRA Part B Mixed Waste Permit
- Eastern U.S. Transfer station/waste preparation for Clive Disposal



- 2011 appears slightly down from 2010 in terms of Treatment/Disposal volumes
- Treatment Capacity does not appear to be an issue

