

Future of Mixed Low-Level Waste (MLLW) at the Nevada Test Site (NTS)



Frank Di Sanza

Federal Project Director, Waste Management
U.S. Department of Energy (DOE) Nevada Site Office
2010 Waste Management Symposia – Session 56
March 10, 2010



EM Environmental Management

safety ❖ performance ❖ cleanup ❖ closure

www.em.doe.gov

NTS High-Activity MLLW Capabilities

- Generators must meet the following criteria in order to ship MLLW to the NTS for disposal:
 - DOE Order 435.1 definition of MLLW
 - MLLW is low-level waste determined to contain a radioactive component subject to the Atomic Energy Act of 1954, and a hazardous component subject to the Resource Conservation and Recovery Act (RCRA)
 - A clear nexus showing the waste is eligible for disposal at the NTS
 - Title 40 Code of Federal Regulations land disposal restrictions (including treated waste)
 - NTS Waste Acceptance Criteria (including Performance Assessment requirements)



EM Environmental Management

safety ❖ performance ❖ cleanup ❖ closure

www.em.doe.gov

NTS FY 2010 and FY 2011 American Recovery and Reinvestment Act (ARRA)/MLLW Disposal Operations Forecast*

	FY 2010	FY 2011	Total
MLLW Base	38,195	234,540	272,735
MLLW ARRA	78,879	45,560	124,439
<hr/>			
Total by Year	117,074	280,100	397,174

**Volumes in cubic feet based on FY 2010
preliminary forecast update on February 5, 2010*

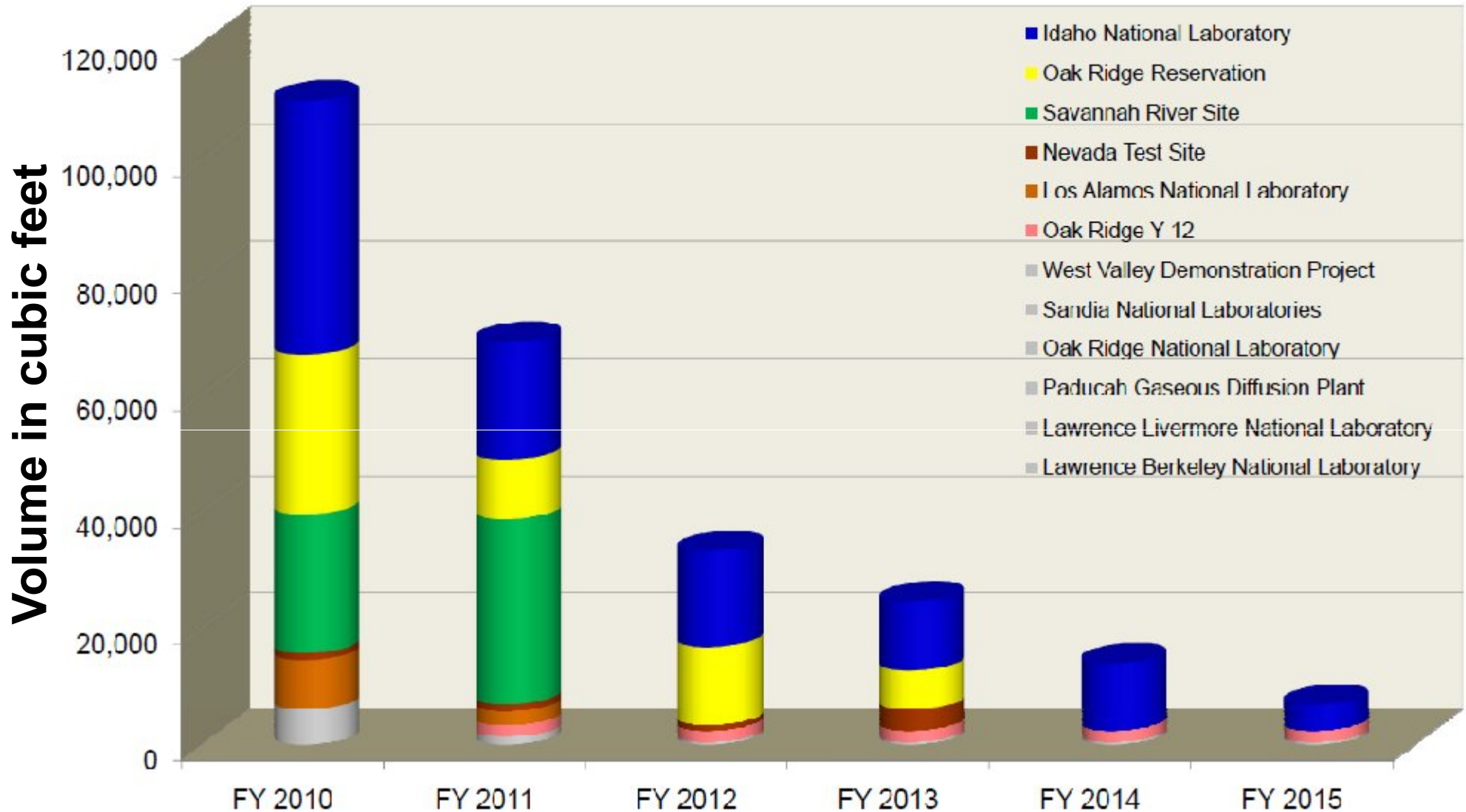


EM Environmental Management

safety ❖ performance ❖ cleanup ❖ closure

www.em.doe.gov

MLLW Out-Years Forecast*



*As of February 8, 2010



EM Environmental Management

safety ❖ performance ❖ cleanup ❖ closure

www.em.doe.gov

Proposed New Mixed Waste Disposal Unit (MWDU) Status

- Completed MWDU conceptual design in January 2009
- Received independent cost evaluation approval on July 21, 2009



- Held RCRA pre-application public meeting on September 2, 2009
- Submitted RCRA Permit Application to the State of Nevada Division of Environmental Protection (NDEP) on September 29, 2009



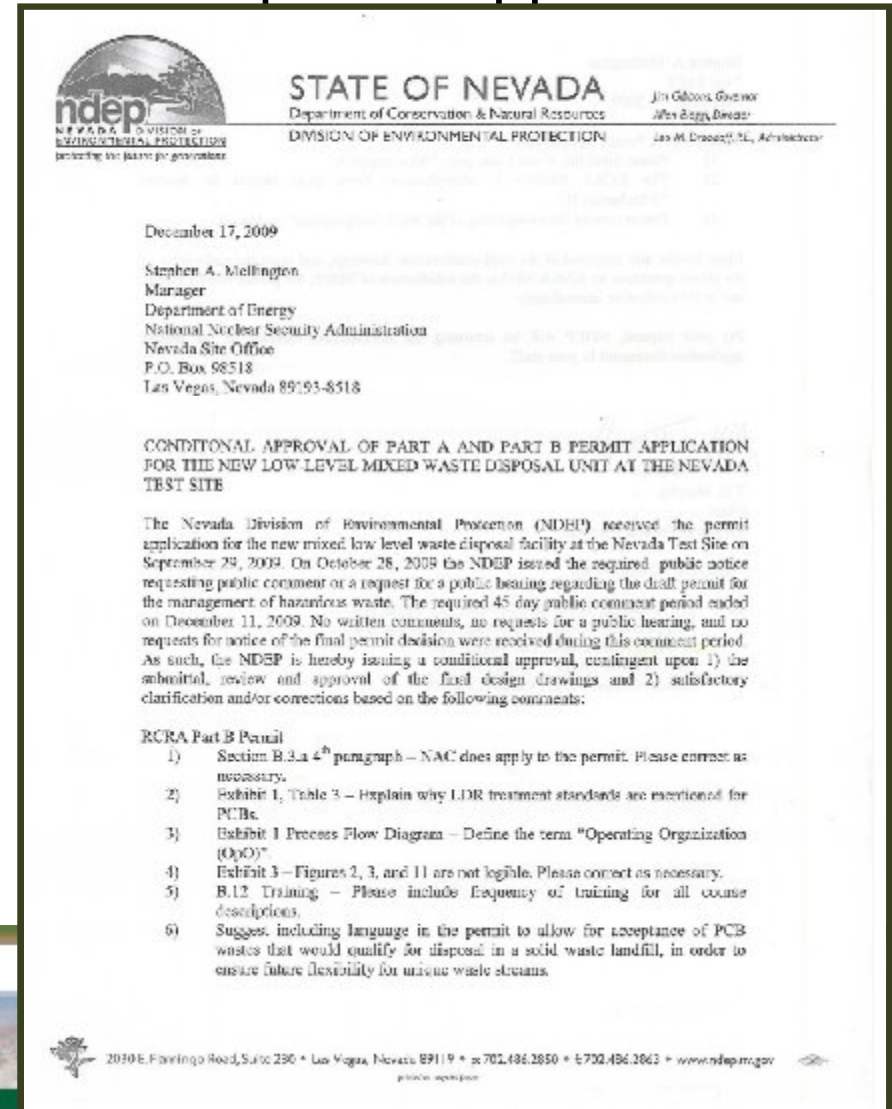
EM Environmental Management

safety ❖ performance ❖ cleanup ❖ closure

www.em.doe.gov

Status (continued)

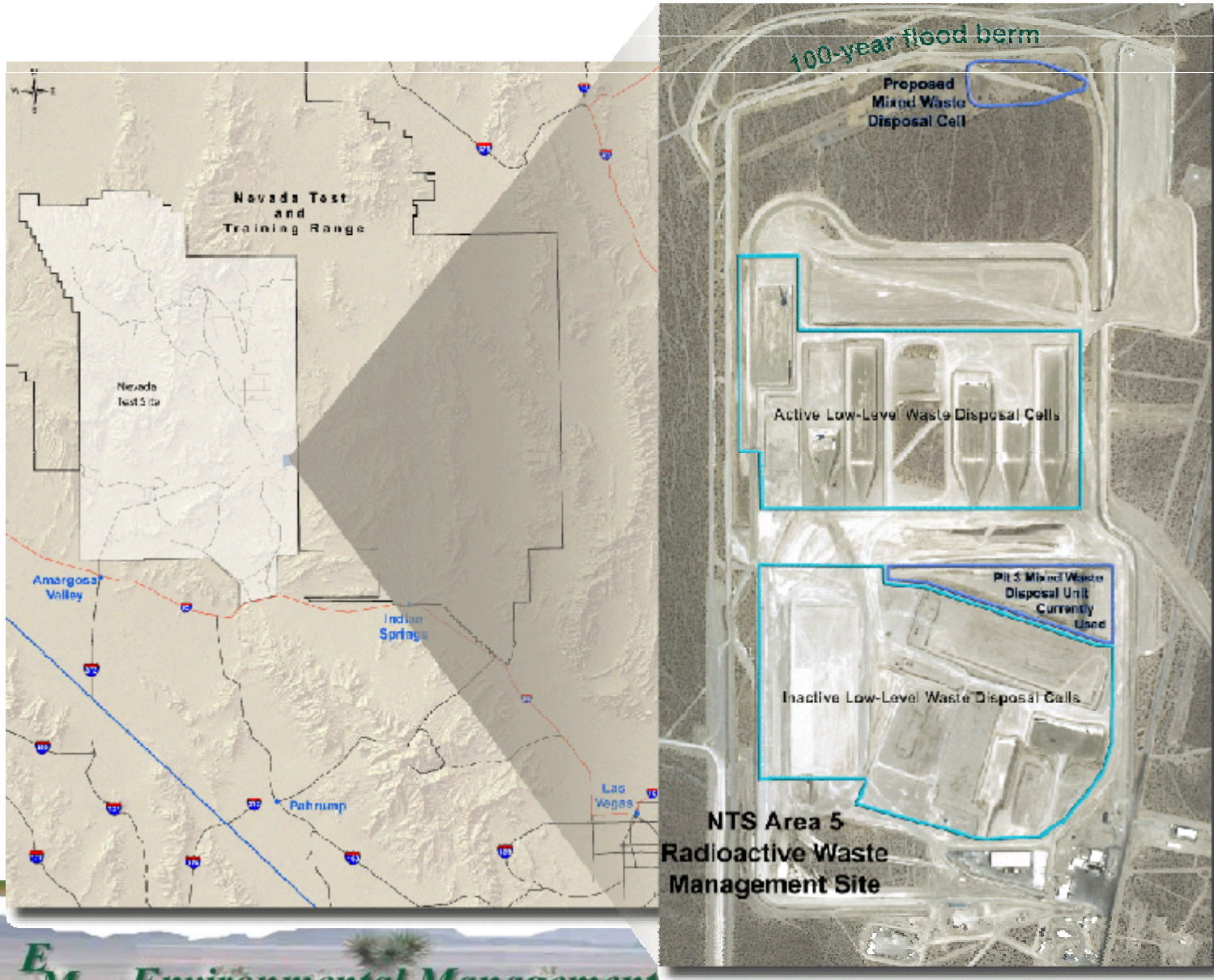
- NDEP issued letter of completeness for the permit application on October 19, 2009
- Received design-build subcontract proposals on November 24, 2009
- Public review and comment period ended December 11, 2009
- NDEP issued conditional approval of new RCRA permit on December 17, 2009



EM Environmental Management

safety ❖ performance ❖ cleanup ❖

Proposed New MWDU Location

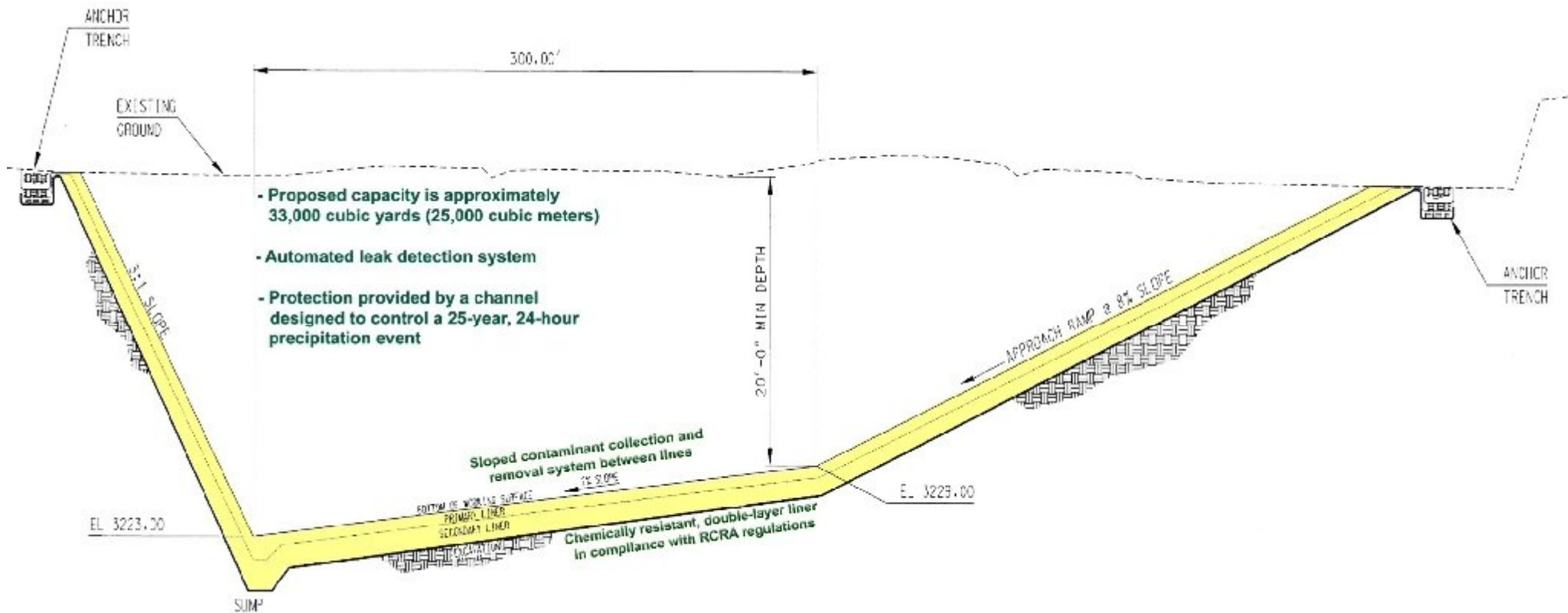


EM Environmental Management

safety ❖ performance ❖ cleanup ❖ closure

www.em.doe.gov

Proposed New MWDU Design

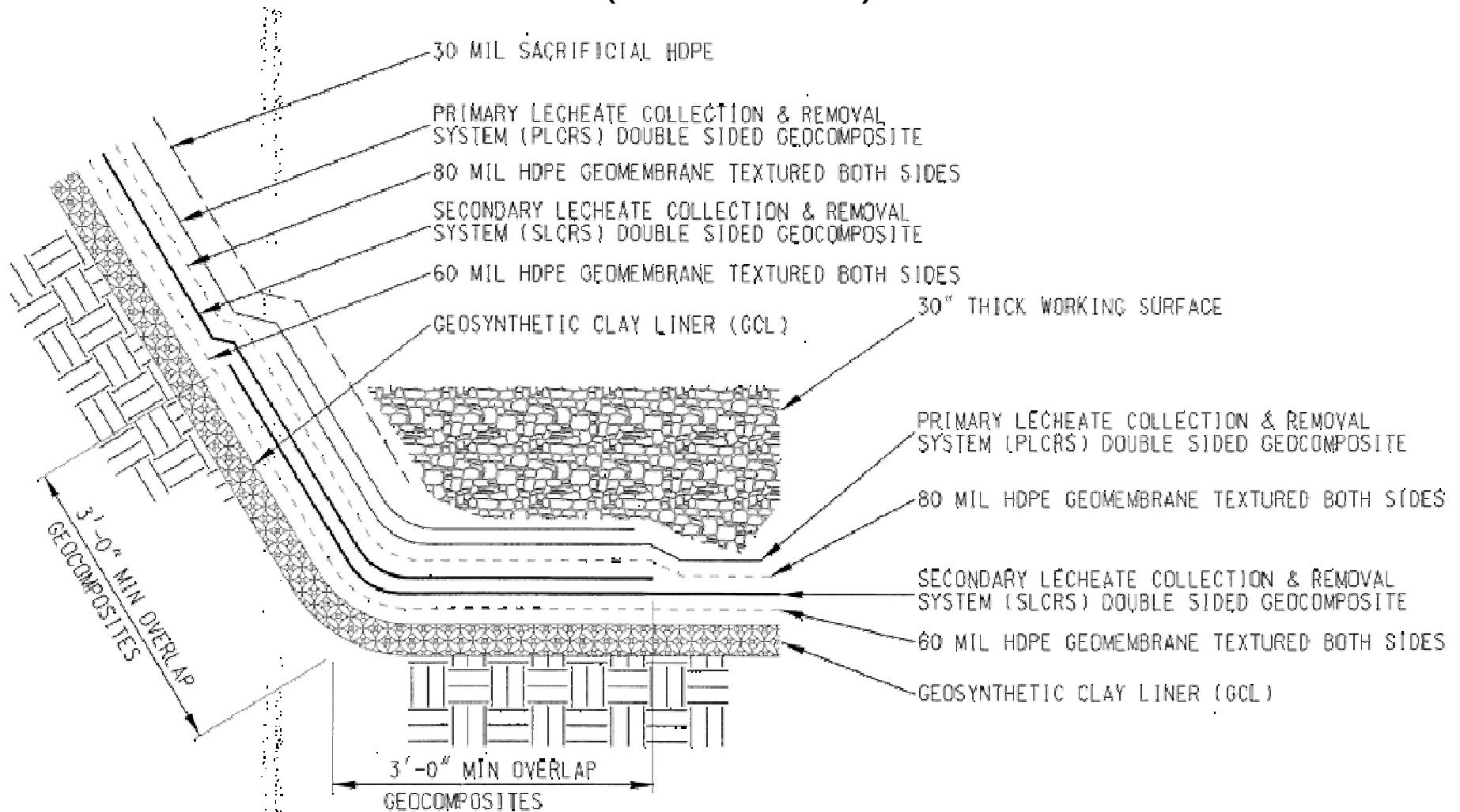


EM Environmental Management

safety ❖ performance ❖ cleanup ❖ closure

www.em.doe.gov

Proposed New MWDU Design (continued)



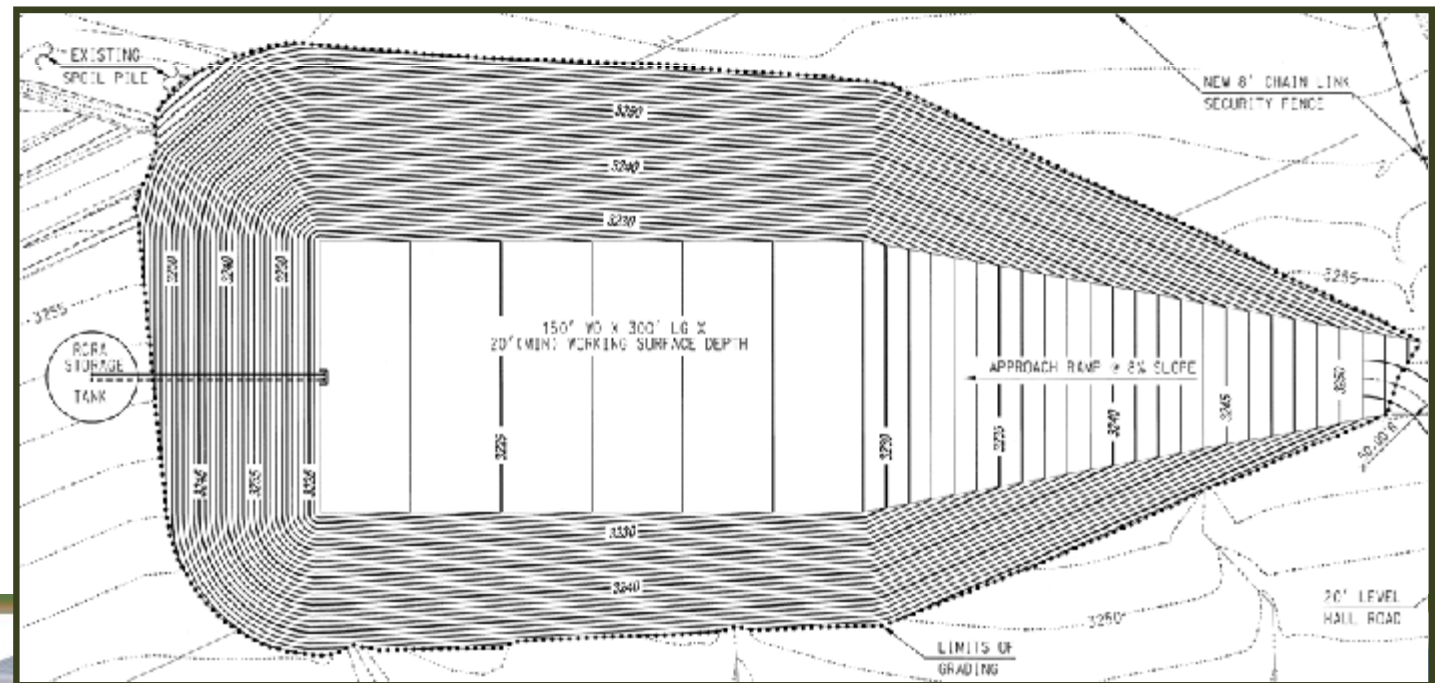
EM Environmental Management

safety ❖ performance ❖ cleanup ❖ closure

www.em.doe.gov

Proposed New MWDU Path Forward

- Final RCRA permit approval (contingent on completed design) anticipated July 2010
- Construction scheduled for July through December 2010
- Construction quality assurance certification scheduled for January 2011
- Final NDEP acceptance anticipated February 2011



EM Environmental Management

safety ❖ performance ❖ cleanup ❖ closure

www.em.doe.gov

March 2011 Opening for Approved MLLW Disposal



EM Environmental Management

safety ❖ performance ❖ cleanup ❖ closure

www.em.doe.gov