

# Advanced Mixed Waste Treatment Project

Emerging Issues With U.S. DOE Prime Contractors  
Waste Management 2010  
March 9, 2010

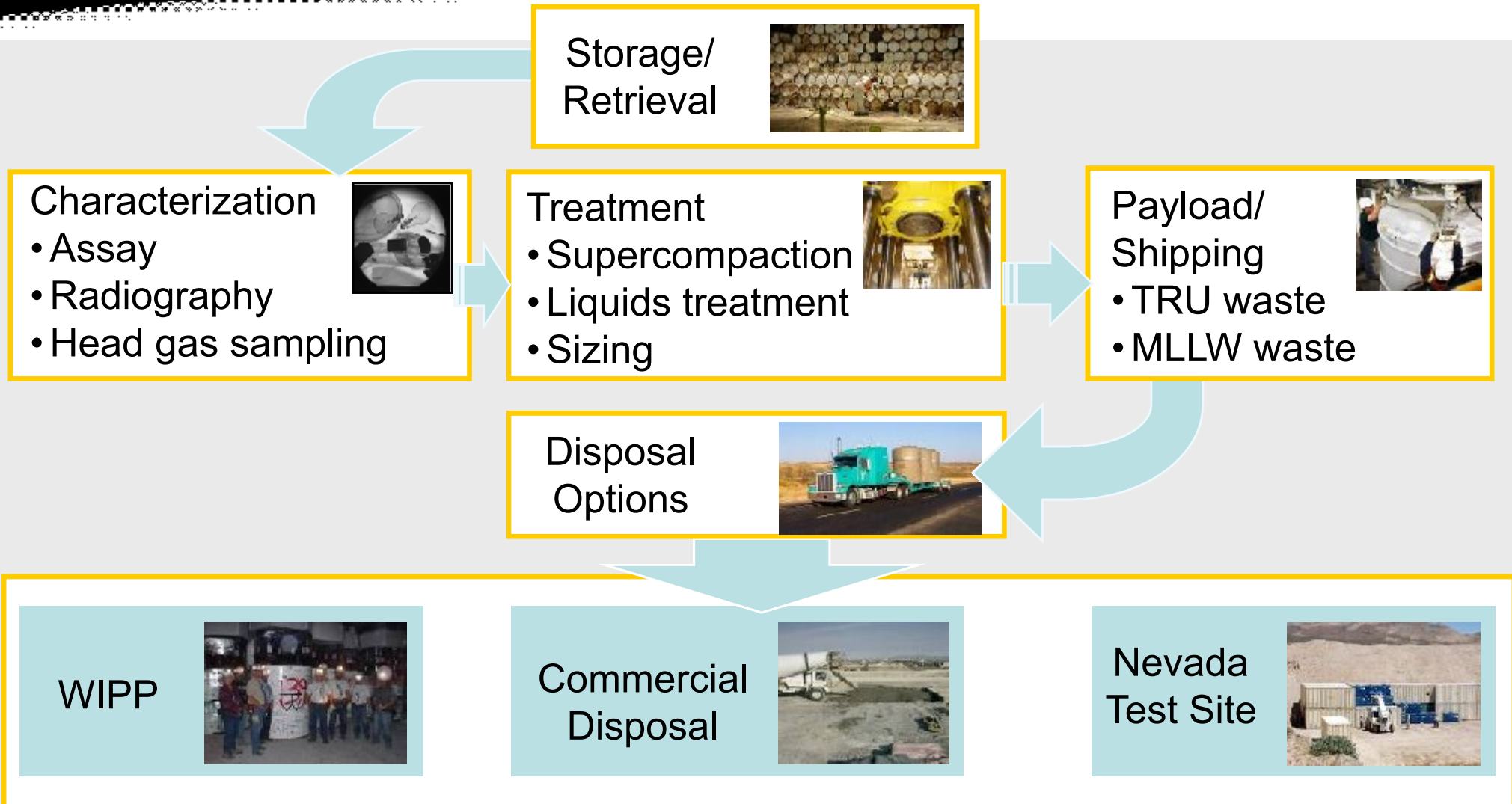


Jeff Mousseau, P.E.  
President and General Manager  
Bechtel BWXT Idaho, LLC





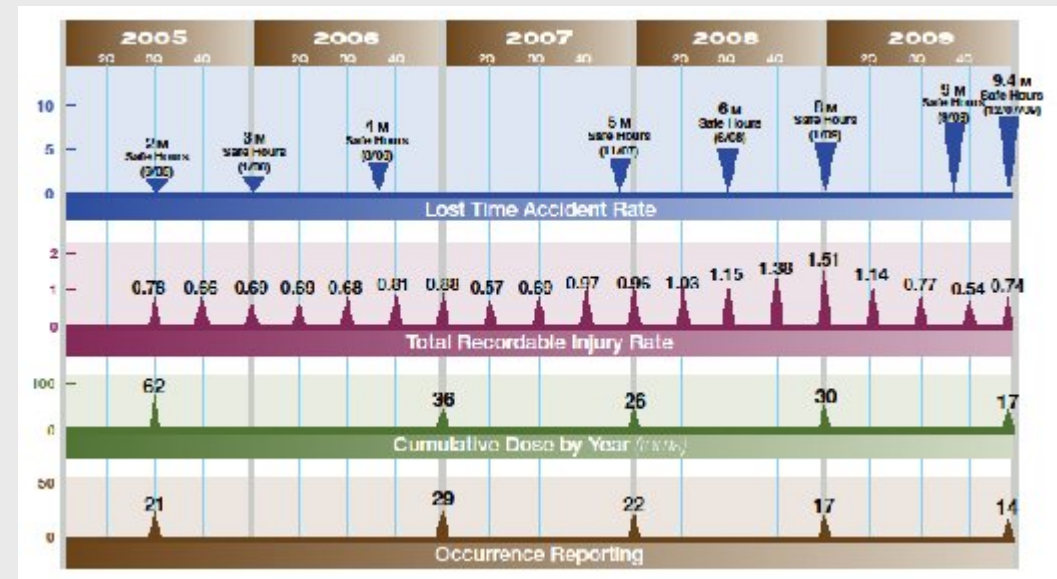
# AMWTP Process



# Outstanding Safety And Compliance Performance

AMWTP and BBWI incorporate safety in all work processes, facility designs, and operating procedures. Our excellent safety record demonstrates this commitment.

- More than **6 years** and **9.8 million hours** without a lost-time accident and a lost-workday rate of zero
- AMWTP Winter Safety Plan has become the complex-wide example of excellence in effective winter planning
- ALARA (as low as reasonably achievable) dose reduction program reduced employee dose by more than 50 percent through 2009
- Improved reliability of operations, reducing incidents that require occurrence reporting to DOE (events that could adversely affect health and safety or the environment)
- Excellent relationships with regulators that have confidence in project, enabling:
  - Permitting of additional waste areas
  - Agreeing to allow offsite waste into Idaho to be treated at AMWTP
- Three successive years of WIPP and NTS audits with no findings
- Five years without an Idaho Department of Environmental Quality finding or notice of violation





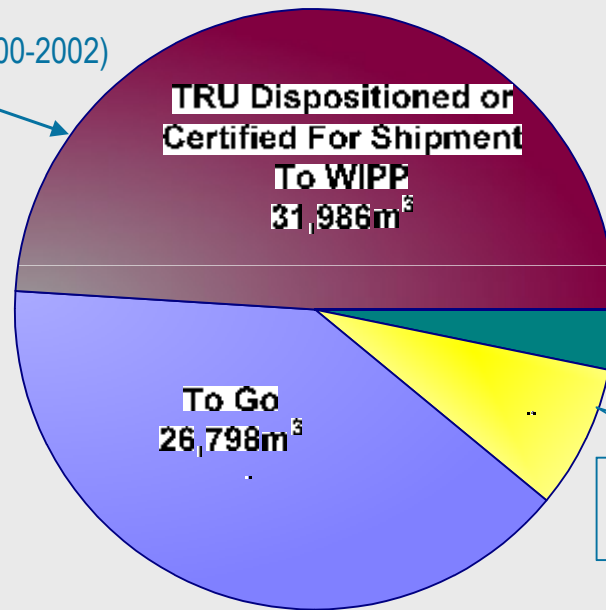
# Project Success

The Idaho Settlement Agreement requires the U.S. Department of Energy to ship 65,000m<sup>3</sup> of stored radioactive transuranic waste out of Idaho no later than Dec. 2018. Through Feb. 16, 2010, AMWTP had dispositioned more than 58% of this waste inventory.



47% of all waste shipments to WIPP are from AMWTP

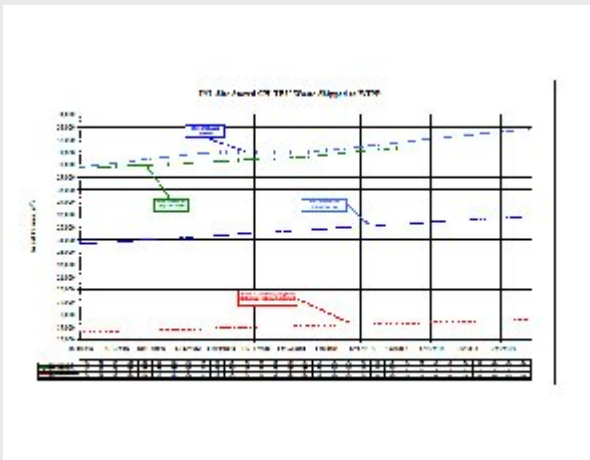
3,101m<sup>3</sup> BBWI (2000-2002)  
28,885m<sup>3</sup> AMWTP



ARRA Mixed Low-Level Waste Shipments  
1,173m<sup>3</sup>

Baseline Mixed Low-Level Waste Shipments  
5,043m<sup>3</sup>

As of Feb. 16, 2010



AMWTP is nearly three years ahead of the Idaho Settlement Agreement Schedule

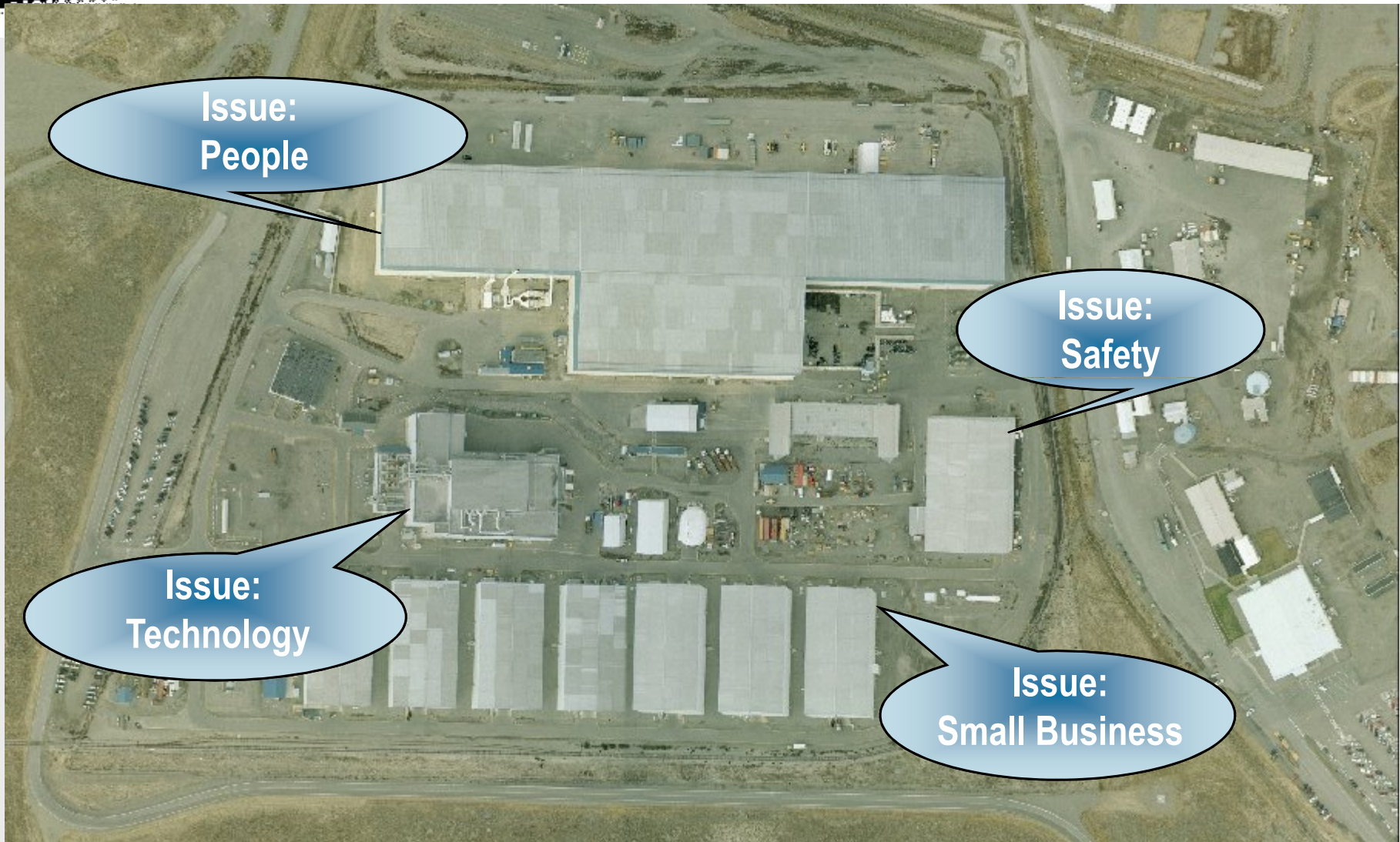
Completed 58% of stored Inventory



AMWTP transuranic waste shipments arriving at WIPP



# Four Discussion Issues





# Emerging Issue: Safety

## Safety Challenge: Attaining a Zero Accident Workplace

### Facts

- DOE Environmental Management work is significantly safer than comparable industries
- Although accidents and injuries have reduced, still not zero
- People are still getting hurt
- Safety targets often not set to zero

### Considerations

- Safe for a day, a month, a year and beyond
- ISMS and VPP
- Safety always
- Leading indicator metrics



# Emerging Issue: People

## People Challenge: Retaining, Motivating Workers On Closure Contract

### Facts

- Key resources exit before completion, decreasing safety, compliance and production performance
- Progress perceived as working yourself out of a job
- Completion dates are well known by workers
- Many other opportunities available

### Considerations

- Retraining of workers to other project demands
- Planning for next assignments
- Worker incentives at completion
- Open communications





# Emerging Issue: Technology

## Technology Challenge: Implementing Improvements In Production Environment

### Facts

- Developing and implementing technology improvements in a fast-paced production/clean-up environment
- Minimal budgets
- Not a problem until front and center

### Considerations

- Chief Scientist position is integrated with production
- Efforts based on project risk analysis
- Product driven technology development with start to finish schedules



Six drum overpack waste packaging



Shaker table



Box cutting robotic saw upgrade



Robotic shearing tool



# Emerging Issue: Small Business

## Small Business Challenge: Meeting Aggressive Small Business Goals

### Facts

- Goals become more aggressive each year
- Inconsistent in selection of North American Industrial Classification System (NAICS) codes for workscopes
- Non-competitive situations arise
- Several positive changes to date

### Considerations

- Uniform standard for small business
- Small business opportunity goals
- Mentor-Protégé relationships



Bechtel/Northwind successful Mentor-Protégé relationship





# AMWTP: TRU Success



*“All of us, together,  
are united in  
continuing to make  
the AMWTP the  
safest worksite  
possible, by actively  
caring for the safety  
of each other.”*

