
Status of Final Repository Development In the Federal Republic of Germany

Dr. Enrique Biurrun
DBE TECHNOLOGY GmbH

The logo for DBE TEC, featuring the letters 'DBE' in a bold, italicized, grey font with a metallic sheen, followed by 'TEC' in a bold, italicized, blue font.

Milestones

Gorleben Site Exploration Mine



- 1979 Site characterization start
- 1986 Shaft 1 sinking start
- 1996 Underground site exploration
- 2000 Moratorium
- 2001 Stand-by operation

Morsleben Repository



- 1971 Start of waste disposal
- 1990 Operation assigned to DBE
- 1998 Stop of waste disposal,
(36.752 m³ ILW disposed of)
- 2001 Decommissioning planning

Konrad Repository



- 1982 Start of licensing procedure
- 1992 Operation assigned to DBE
- 1997 Licensing conditions fulfilled
- 2002 License issued

Gorleben – Site Exploration Mine



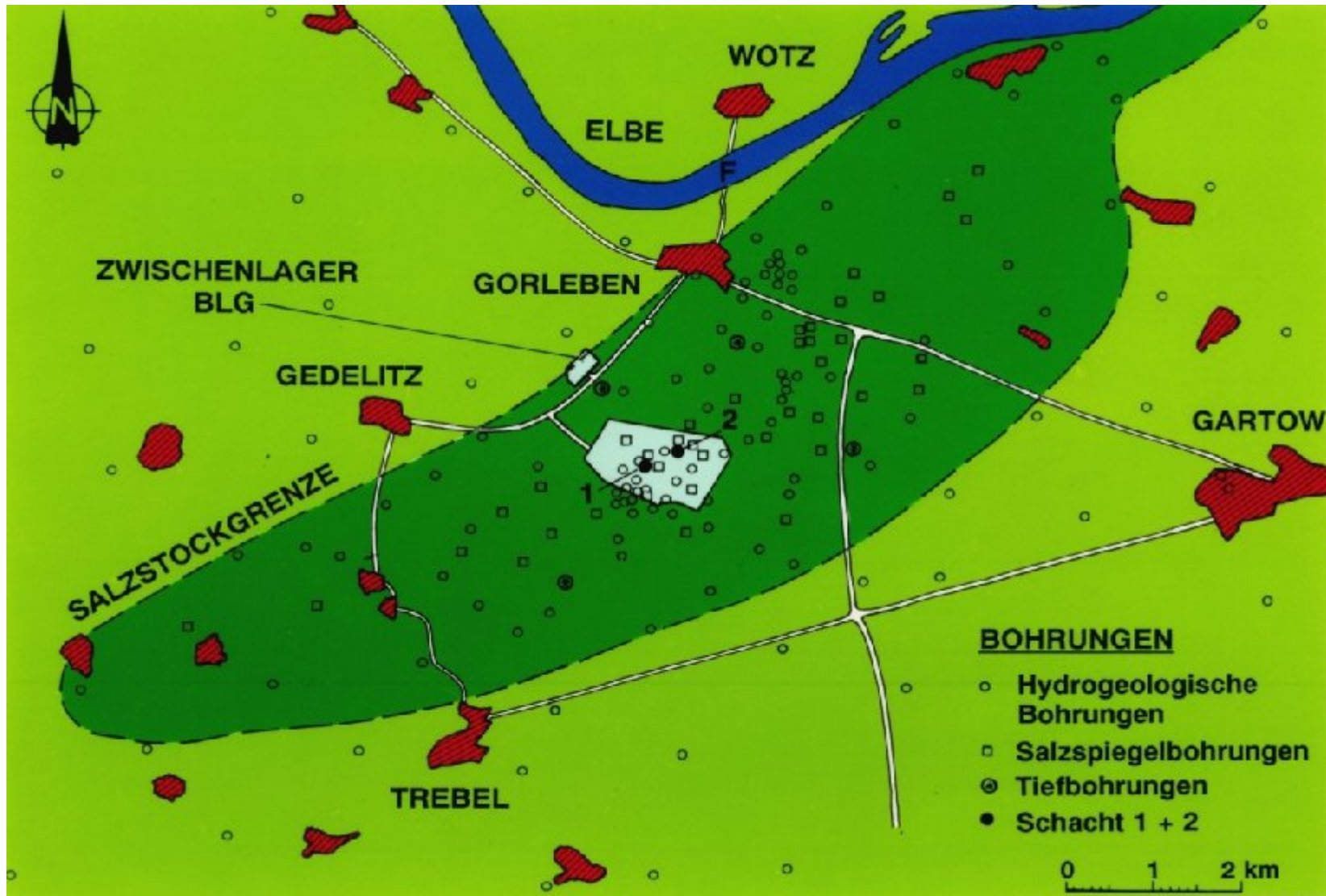
DBE-TEC

Gorleben - Milestones

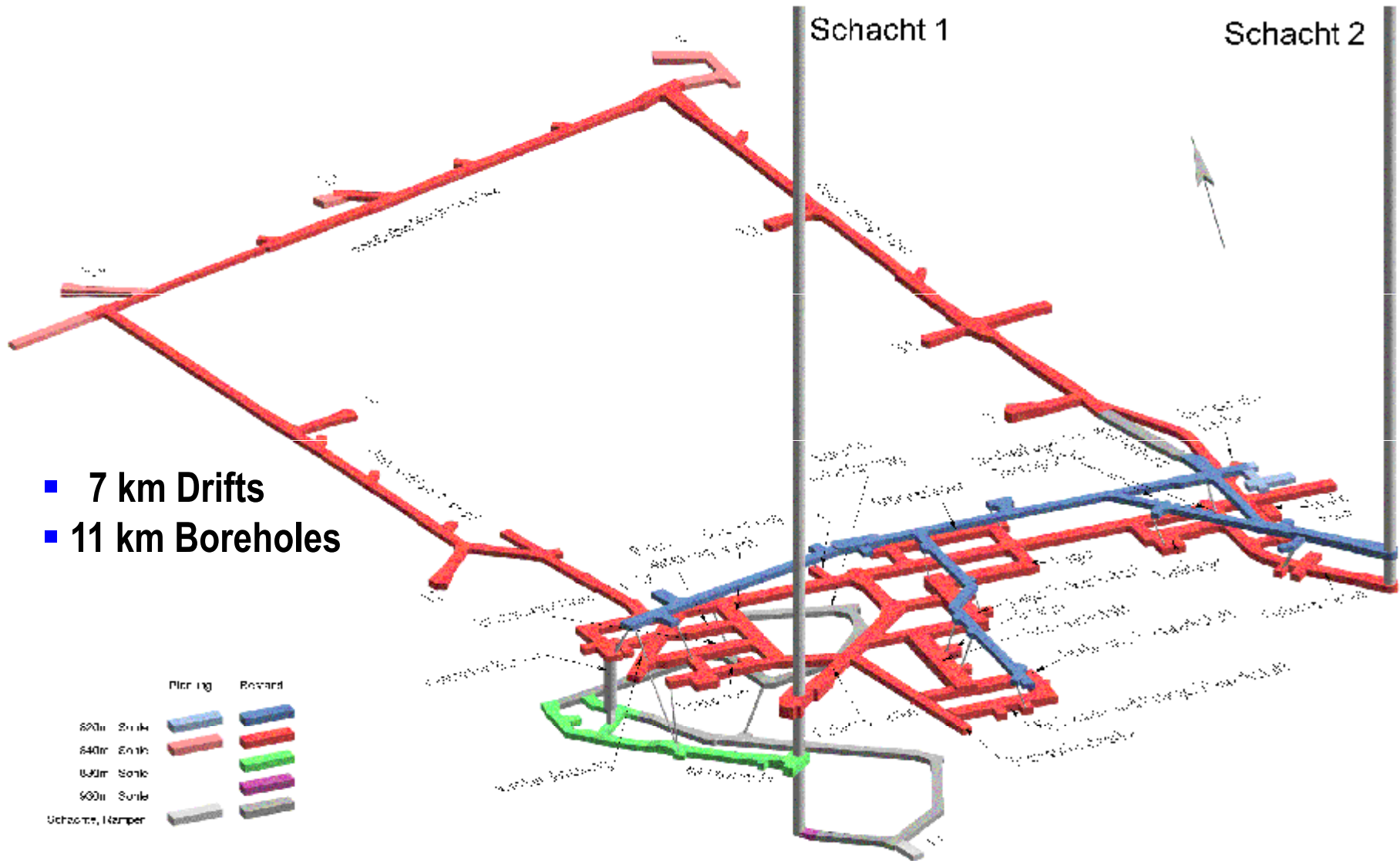


- 22.02.1977** Site designation Gorleben
(Nukleares Entsorgungszentrum/NEZ)
- April 1979** Start of surface site characterization
- 1980/1981** Four deep boreholes (1002 / 1003 / 1004 / 1005)
- Mai 1983** Comprehensive suitability statement
by PTB
- Sept. 1986** Ground-breaking Shaft 1
- Oct. 1996** Communication between Shaft Gorleben 1
and Gorleben 2 (840-m-Sohle) established:
Thereafter excavation of infrastructure area
and characterization of Exploration Area 1
- 01.10.2000** Site characterization interrupted. Thereafter
stand-by operation only
- 2010** Site exploration to be continued

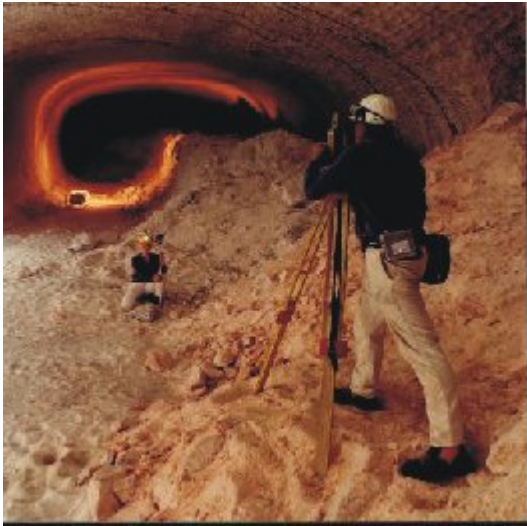
Gorleben – Site Exploration



Gorleben – Underground Facilities



Gorleben - Underground



Konrad



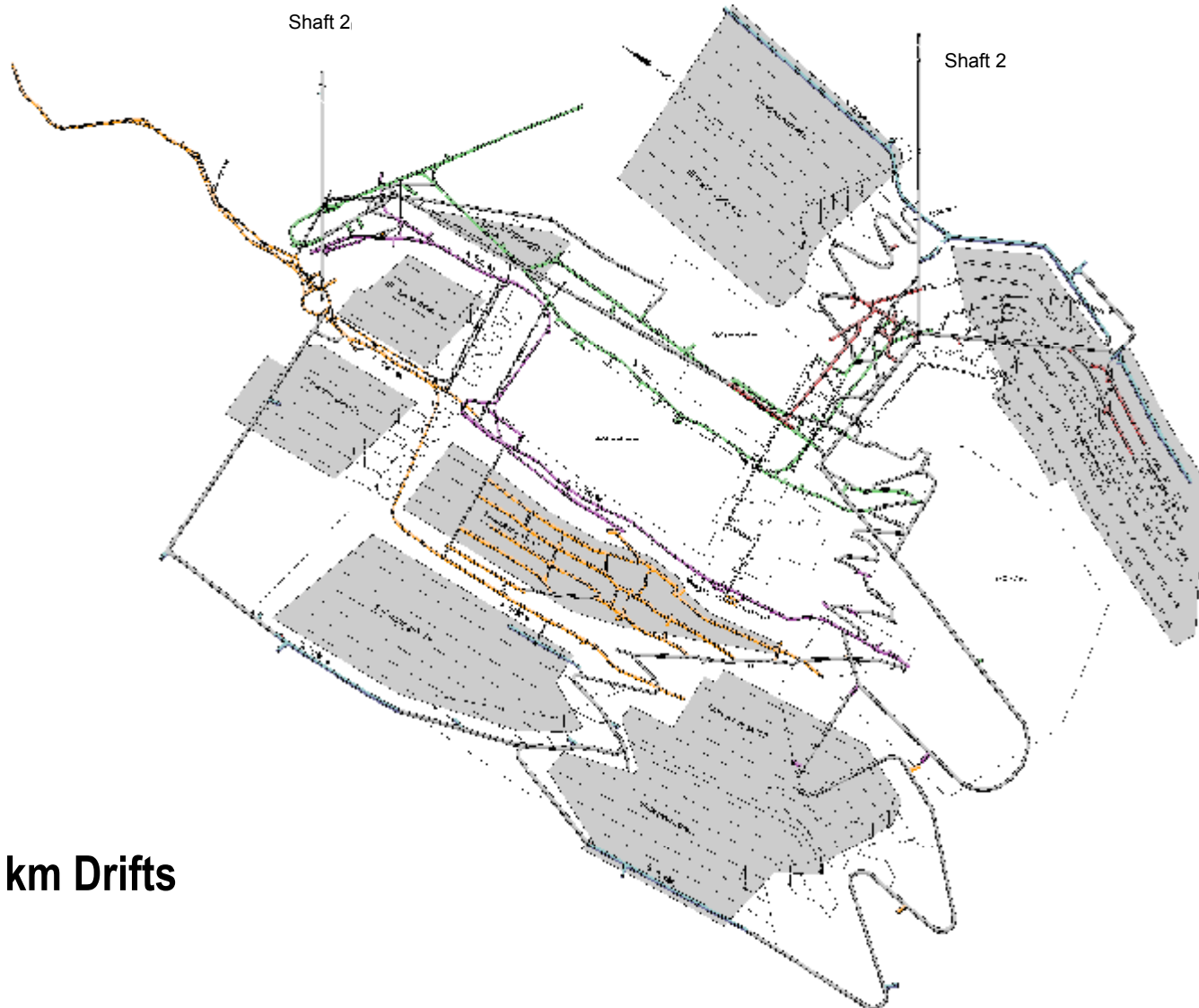
DBETEC

Konrad – Milestones



- 1965 – 1976** Iron ore production approx. 7 mil. t;
Deposit: ~ 1.4 billion t
- 1975** Preliminary survey as candidate site
- 1982** Site Suitability statement and License Application submitted
- 09/92 - 03/93** Public hearing (75 hearing days)
- 14.06.00 / 17.07.01** Consensus Agreement
 - Finishing licensing procedure
 - Withdrawal immediate enforcement
- 01.08.01** Radiation Protection Ordinance amendment
License application amendment
- 05.06.02** LICENSE GRANTED
- 2002-2008** LITIGATION
- 2010** REPOSITORY CONSTRUCTION

Konrad – Underground Facilities



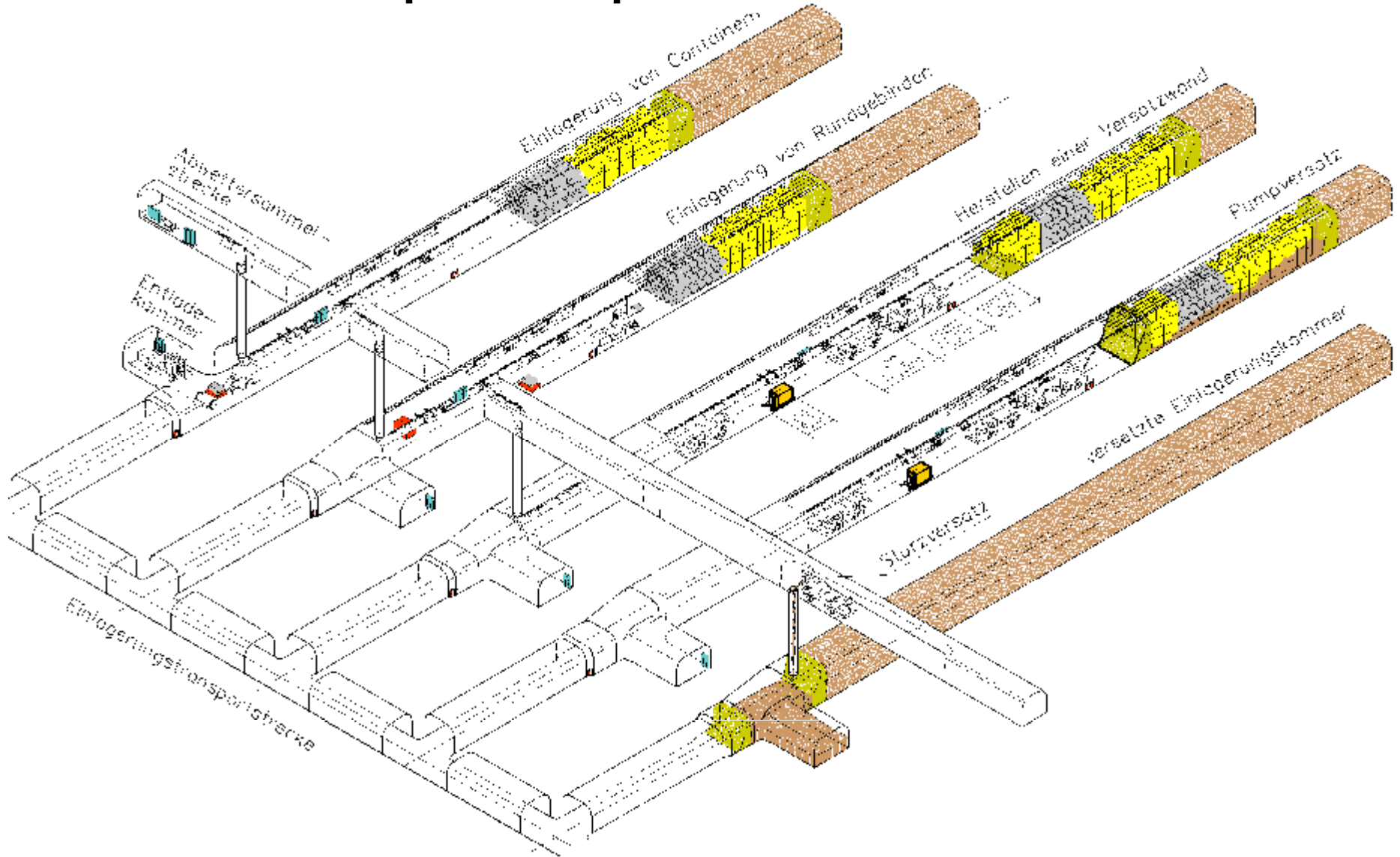
- 40 km Drifts

Konrad - Equipment



DBETEC

Konrad – Disposal Sequence



Morsleben – Radioactive Waste Repository



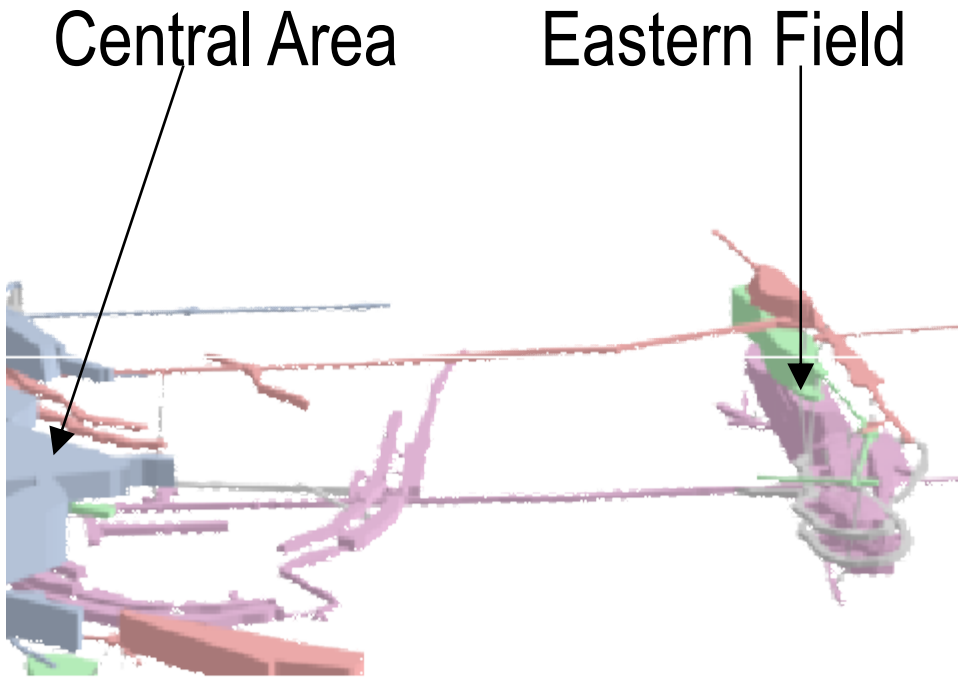
DBE-TEC

Morsleben – Milestones



- 1970** Bartensleben mine transferred to the GDR NPP operator
- 1971** Start of trial disposal (LLW)
- 1974** Approval of repository construction
- 1981 / 1986** 1st and 2nd license for permanent operation
- 10 / 1990** Morsleben repository a Federal Facility under BfS, operation by DBE
- 1991** Disposal stop, refurbishment
- 1994** Disposal restarted
- 09 / 1998** Waste acceptance interrupted
- 05 / 1999** Statement by BfS: no further waste acceptance for disposal
- 11 / 2000** Advanced backfilling in southern field
Repository closure to follow

==== Morsleben – Waste Disposal Eastern Field =====



Morsleben – Waste Disposal Western Field



DBE-TEC