



Mission Support Alliance

Frank Figueroa, MSA President
and General Manager





Providing Essential Services to DOE and other Hanford Contractors

- Scope
 - Safety, Security and Environment
 - Site Infrastructure and Utilities
 - Site Business Management
 - Information Management
 - Portfolio Management
- First Hanford contract to provide
 - Commercial-like site-wide services
 - Site-wide integration for DOE



We measure our success by our customers' success



MSA Values



- A culture of safe and secure operations
- An ethos of integrity and ethical behavior
- An attitude of excellence in customer service
- A mentality of continuous learning and improvement



Our Mission Support Alliance Teaming for Performance and Value

"This contract combines the skills and talents of a number of companies with proven track records in conducting mission support activities."
– Dave Brockman, Manager, DOE Richland Operations Office





Supporting Environmental Cleanup with Innovative Service Model

- Commercial Service Delivery Model

First of its Kind

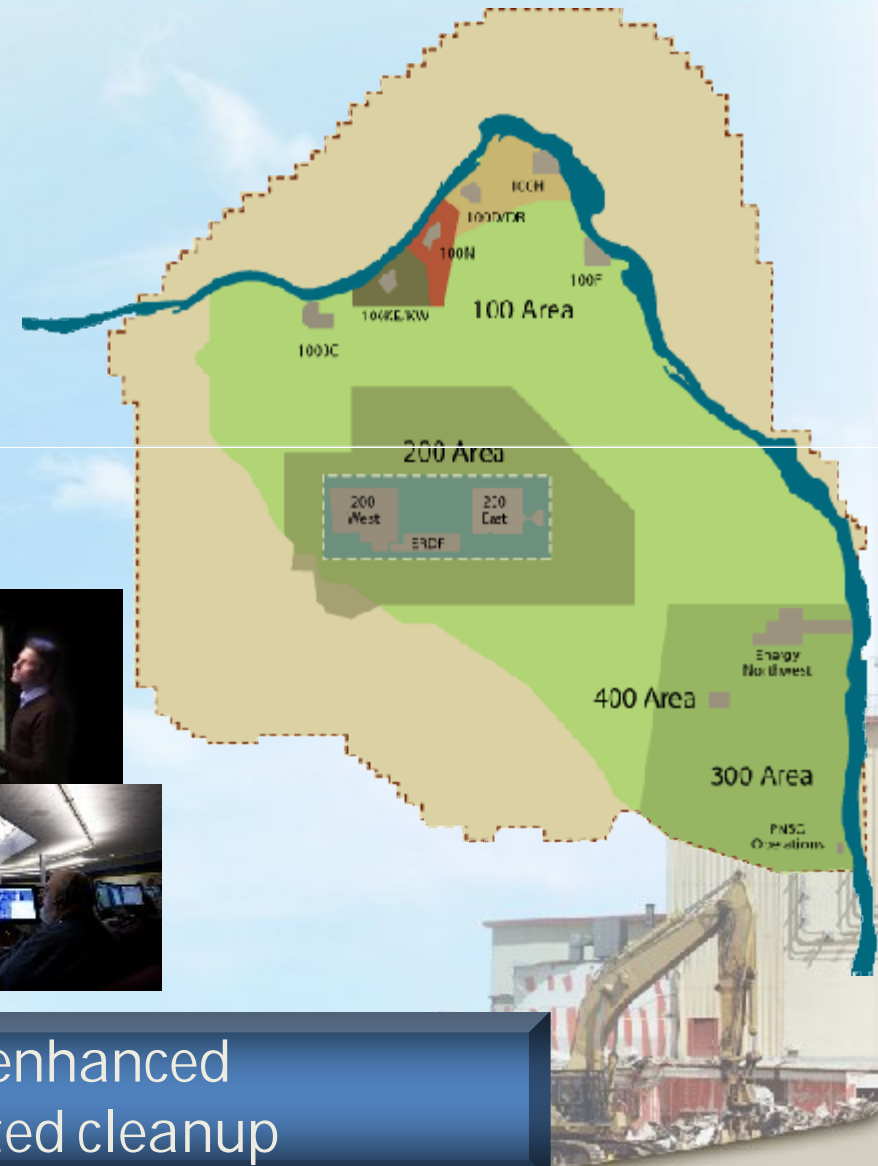
- Project Liaisons
- Mission Service Desk
- On-line Service Catalog
- Service Delivery Documents





Hanford Integration

- Portfolio Management
 - First of its kind
 - DOE's Trusted Agent
 - Site-wide integration for DOE
 - Hanford Life-Cycle Cleanup Planning Process
 - Portfolio Analysis Center

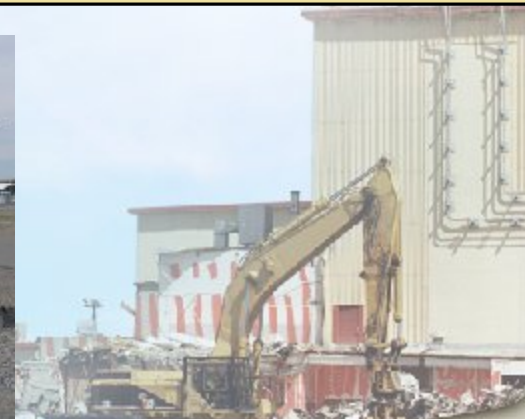
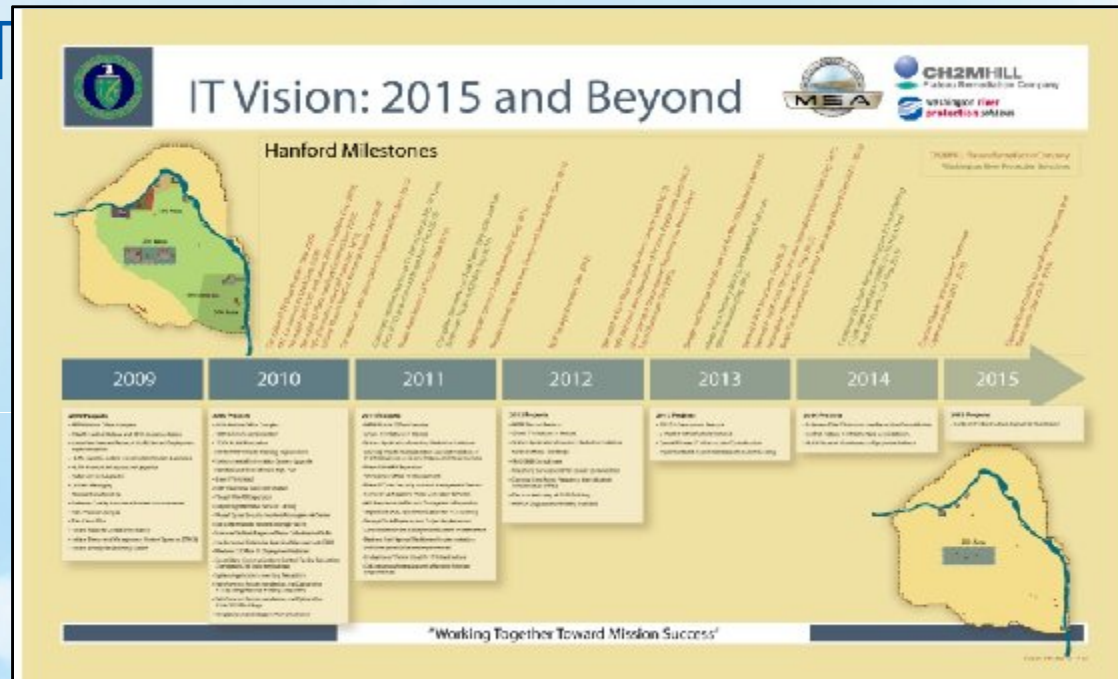


Integrating missions for enhanced performance and accelerated cleanup



Aligning IT Services to Enable Our Customers' Success

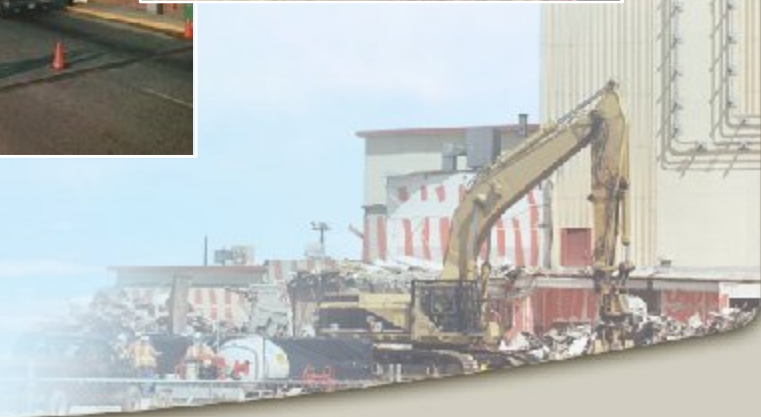
- Bringing the power of IT to the field
 - High speed networking
 - Wireless networking anywhere
 - Single, integrated emergency communications
 - Technology infusion to reduce the cost of site telephone services





Supporting Site Contractors' ARRA Activities

- **HAMMER**
 - Site-wide training services
 - New site-wide safety program implementation
 - Increased service in all functional areas due to increased demand





Contractor Leadership Council

- Participation from all major site contractors
- Address site-wide tactical and strategic issues
 - Facility consolidation
 - Work force restructuring
 - Traffic planning



Working in collaboration to address strategic and emerging issues



MSA Video

