

Update on Acquisition and Project Management

**Presented to:
*2009 Waste Management Symposium***

**J. E. Surash, P. E.
Deputy Assistant Secretary
Acquisition and Project Management**

March 2, 2009



EM Environmental Management

safety ❖ performance ❖ cleanup ❖ closure

Agenda

- **Better Planning/Scheduling of Procurements**
- **Contract Execution**
- **Improved Project Planning and Execution**
- **Best-in-Class Progress**



EM *Environmental Management*

safety ❖ performance ❖ cleanup ❖ closure

Better Planning and Scheduling of Procurements

- Sustainable Procurement Practices
- Reliable Acquisition Forecasts
- Industry Outreach and Participation
- Procurement Execution Strategy
- Comprehensive Acquisition Planning



EM *Environmental Management*

safety ❖ performance ❖ cleanup ❖ closure

Contract Execution

- Contract Administration
 - Concerns about quality and FAR compliance of contactor change order cost proposals
 - Problems with cost element justifications required by FAR
 - Approved accounting, estimating, and purchasing systems

- If an LLC, experience shows value of a strong LLC lead for business system ownership

- Fee paid on incurred costs on a cost reimbursement contract

- Aligning contract and project changes



EM *Environmental Management*

safety ❖ performance ❖ cleanup ❖ closure

Improved Project Planning and Execution

- Project Portfolio
 - 14 Capital Line-Item Projects
 - 62 NNSA and Clean-Up Projects
- Validated Near-Term Baselines
- Executing and Managing the Project Baselines
- Focus Actions for Projects
 - Performance Evaluation and Measurement Plan
 - Milestone Evaluation with Project Performance Data
 - Monthly Project Assessments



EM *Environmental Management*

safety ❖ performance ❖ cleanup ❖ closure

EVMS Status of Major Contracts

Site	Contract	Certification
Savannah River	Management and Operating - Washington Savannah River Co.	Green
	Salt Waste Processing - Parsons Infra. & Tech.	Green
	Management and Operating - Savannah River Nuclear Solutions	Yellow
Oak Ridge	Oak Ridge Closure - Bechtel Jacobs LCC	Green
	U-233 Processing - Isotek Systems LLC	Yellow
Idaho	Idaho Cleanup Project - CH2M-WG Idaho	Green
Richland	Richland Remediation - Fluor Hanford	Green
	River Corridor Closure - Washington Closure Group	Green
	Waste and Facility Disposition - CH2M Hill Plateau Remed. Co	Yellow
River Protection	Waste Treatment Plant - Bechtel National	Green
	Tank Farm Operations - Washington River Protection Solutions	Yellow
Ports/Pad.	Remediation - LATA/Parallax	Green
	DUF6 Project - Uranium Disposition Services	Yellow
Carlsbad	TRU Waste Handling - Washington TRU Solutions	Green



EVMS Status of Major Contracts

Site	Contract	Certification
Los Alamos	Oper Support & Remed Services - Los Alamos Nuclear Security LLC	
Nevada Test Site	NTS Mission Support & Infrastructure - National Security Technologies	
	NTS Environmental Cleanup - Stoller-Navarro Joint Venture LLC	
Pantex	Mgmnt, Ops & Tech Supp - Babcock & Wilcox Tech Services Pantex	
Sandia	Laboratory Mission Support - Lockheed Martin Sandia Corporation	
Brookhaven	Management & Operations Contract - Brookhaven Science Associates	
MOAB	Uranium Mill Tailings Remedial Action Contract - Energy Solutions	
West Valley	West Valley Closure Contract - West Valley Environmental Services LLC	
SPRU	G2 & H2 Facility Deactivation & Demolition - Washington Group Intl.	
ETEC	Environmental Restoration of ETEC Site - Boeing North American Corp.	
SLAC	SLAC Mgmnt and Ops - Stanford University	

Best-in-Class Progress

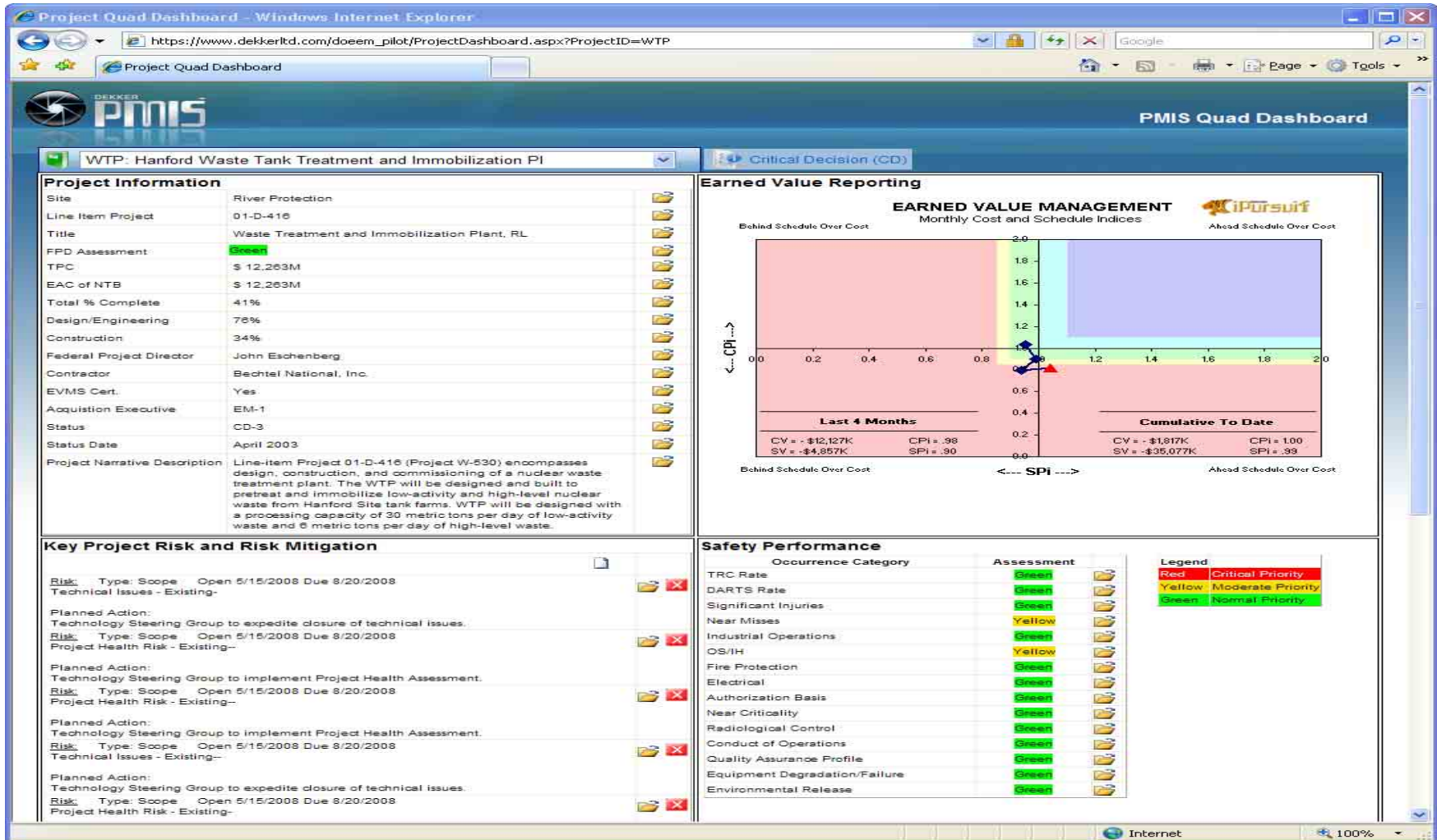
- Agreement with USACE supported by Project Time & Cost and Acquisition Solutions Inc.
- Development of Corporate Implementation Plan
- Implementation of Recommended Priority Actions
 - EM Clean-Up Guide
 - Contingency Implementation Guide
 - Proper roles, responsibilities, and processes for changes
 - EVMS Surveillances
 - Cost Pricing Database
 - EM Program Level Risk
 - Primavera (P6)
 - Dekker PMIS



EM *Environmental Management*

safety ❖ performance ❖ cleanup ❖ closure

PMIS Quad Dashboard



EM Environmental Management

safety ❖ performance ❖ cleanup ❖ closure

Various PMIS Screenshots



Digital Dashboards: At-a-Glance Visual Project Diagnostics

IEAC Graphs: Compare BCWS, BCWP, ACWP to Three IEACs

EVM Analysis Charts by WBS/OBS: View EVMS Data at All Available Levels of the WBS or OBS

Integration With Scheduling Systems: Import Scheduling Data for Analysis



EM Environmental Management

safety ❖ performance ❖ cleanup ❖ closure