



# *Update on the Office of Environmental Management*

Presented to:  
*Waste Management Symposium*

Presented by:  
*Dr. Inés R. Triay*  
*Assistant Secretary, Acting*  
*Office of Environmental Management*

**March 2, 2009**



**EM** *Environmental Management*

safety ❖ performance ❖ cleanup ❖ closure

# EM Mission

***“Complete the safe cleanup of the environmental legacy brought about from five decades of nuclear weapons development, production, and Government-sponsored nuclear energy research.”***



- Largest environmental cleanup effort in the world, originally involving two million acres at 108 sites in 35 states
- Safely performing work
  - In challenging environments
  - Involving some of the most dangerous materials known to man
  - Solving highly complex technical problems with first-of-a-kind technologies
- Operating in the world’s most complex regulatory environment
- Supporting other continuing DOE missions and stakeholder partnerships



**EM Environmental Management**

safety ❖ performance ❖ cleanup ❖ closure

*U.S. Department of Energy*

# Program Priorities

- Essential activities to maintain a safe and secure posture in the EM complex
- Radioactive tank waste stabilization, treatment, and disposal
- Spent nuclear fuel storage, receipt, and disposition
- Special nuclear material consolidation, processing, and disposition
- High priority groundwater remediation
- Transuranic and mixed/low-level waste disposition
- Soil and groundwater remediation
- Excess facilities deactivation and decommissioning (D&D)



*EM* Environmental Management

safety ❖ performance ❖ cleanup ❖ closure

*U.S. Department of Energy*

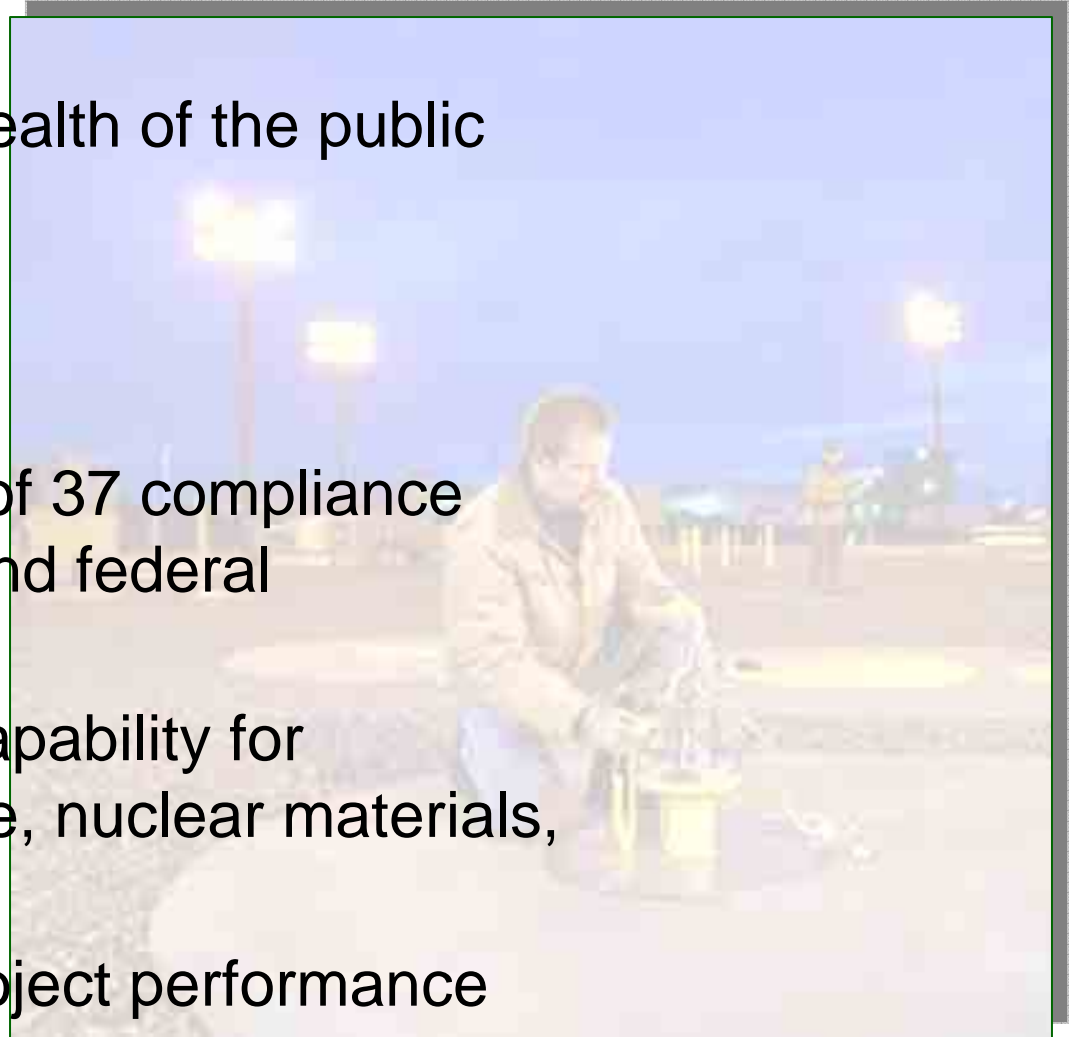
# Top-Level Goals

## Risk Reduction

- Ensure the safety and health of the public and the workers
- Protect the environment

## Compliance

- Carry out requirements of 37 compliance agreements with state and federal regulatory agencies
- Complete building the capability for dispositioning tank waste, nuclear materials, and spent nuclear fuel
- Improve construction project performance



**EM** Environmental Management

safety ❖ performance ❖ cleanup ❖ closure

U.S. Department of Energy

# Top-Level Goals

## Footprint Reduction

- Reduce the active area and number of sites
- Provide maximum return on money invested in EM – reduces overall life cycle cost of cleanup program
- Focus on proven successes – solid waste disposal, D&D of contaminated facilities, and soil and groundwater remediation
- Create thousands of jobs through economic recovery investment

## Reutilization of Assets/Energy Parks

- Transform EM resources: land, infrastructure, technologies, highly-skilled workforce into an Energy Parks Initiative (EPI)



**EM** Environmental Management

safety ❖ performance ❖ cleanup ❖ closure

*U.S. Department of Energy*

# Goal Attainment

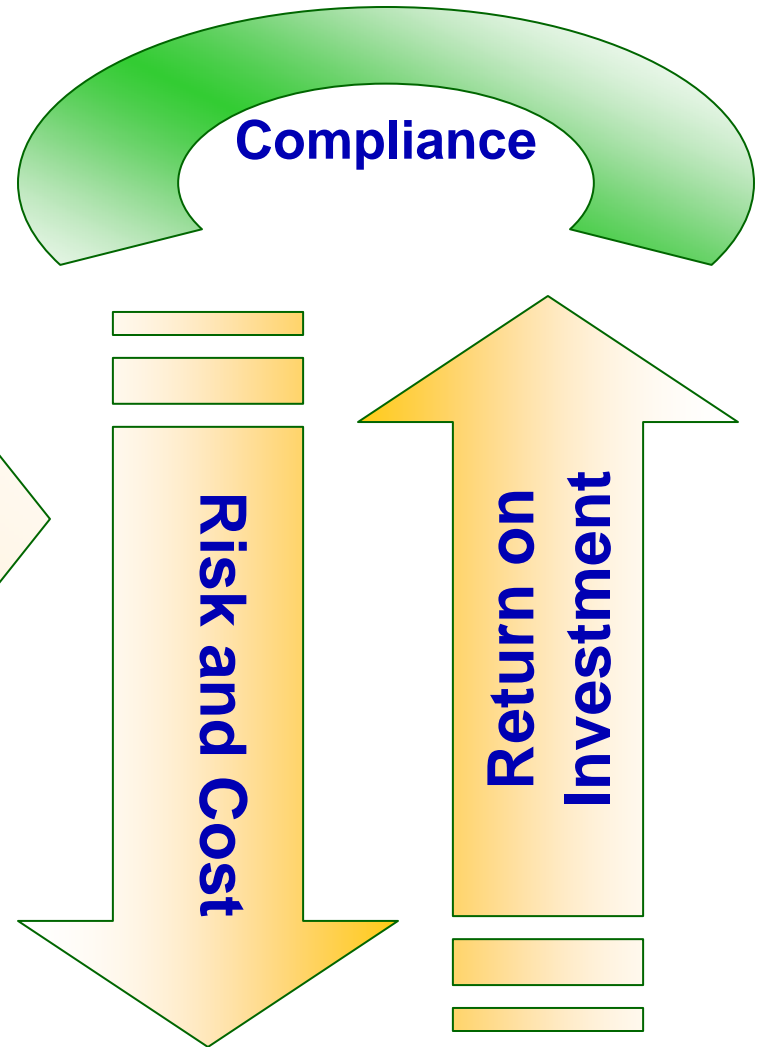
## Sound business practices

- Near term completions
- Footprint reduction

Use science and technology to optimize the efficiency of tank waste disposition

Use science and technology to optimize the efficiency of excess nuclear materials, and spent nuclear fuel disposition

Alternative management approaches such as the Energy Parks Initiative

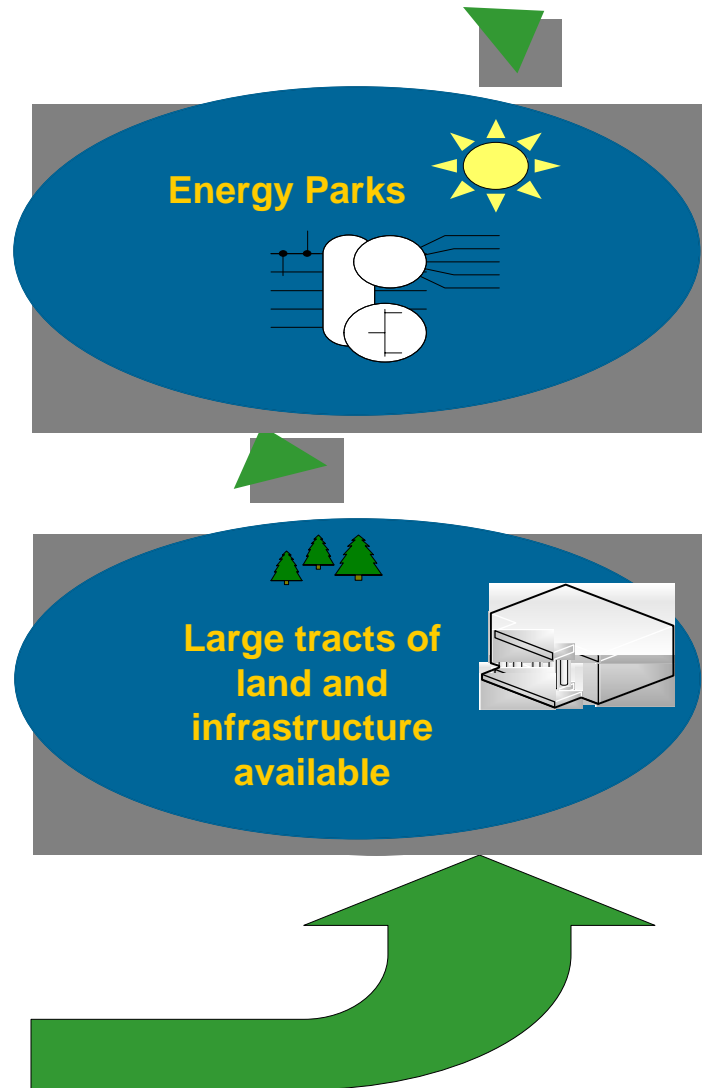
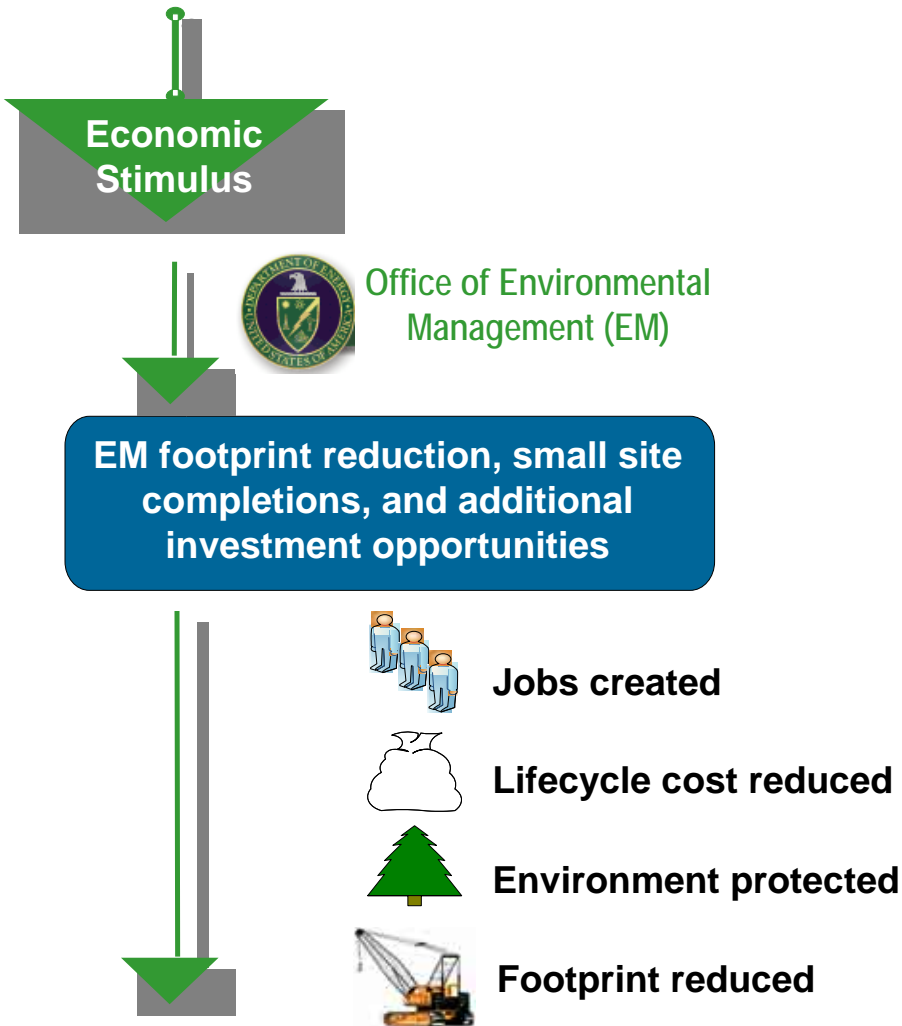


**EM** Environmental Management

safety ❖ performance ❖ cleanup ❖ closure

U.S. Department of Energy

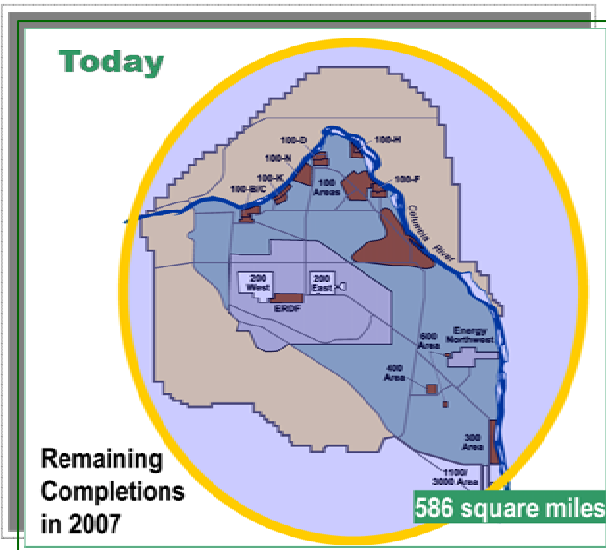
# Footprint Reduction



## Clean, Diverse Energy Sources

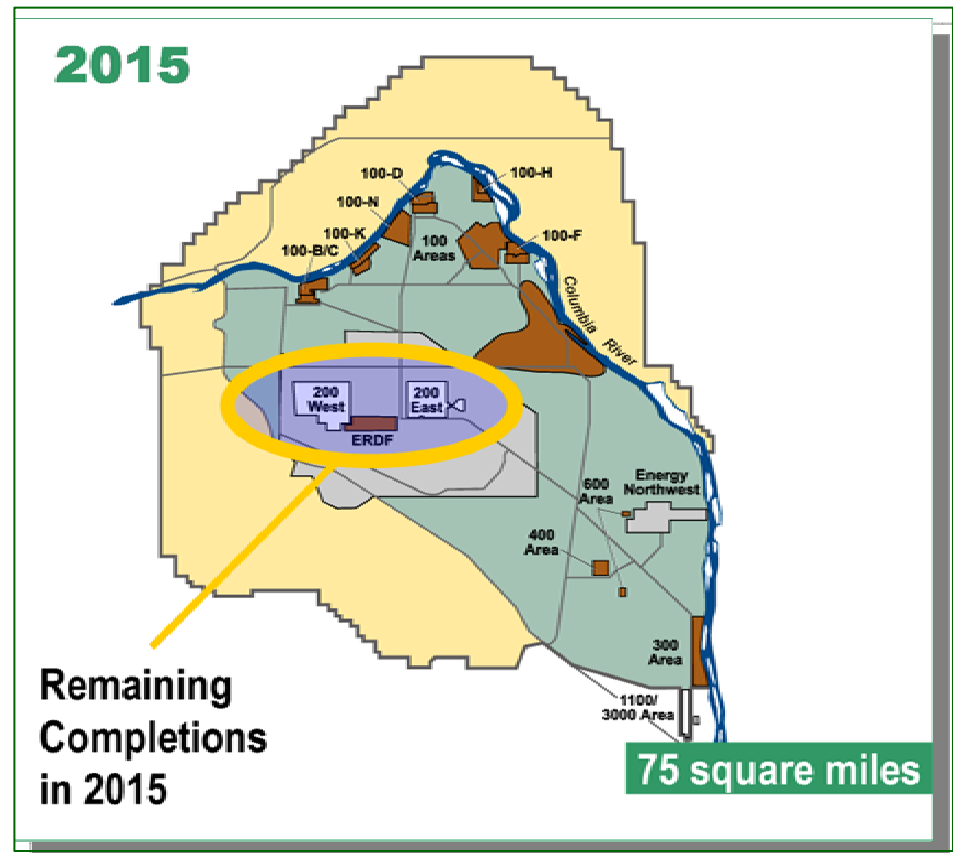
- Energy security
- Establish long-term site mission
- Sustainable jobs

# Footprint Reduction – Hanford Site



- Accelerate river corridor cleanup
- Complete D&D of the plutonium finishing plant

- Reduces environmental risk with large return on investment
- Results in roughly 90 percent reduction of the site footprint



**EM** Environmental Management

safety ❖ performance ❖ cleanup ❖ closure

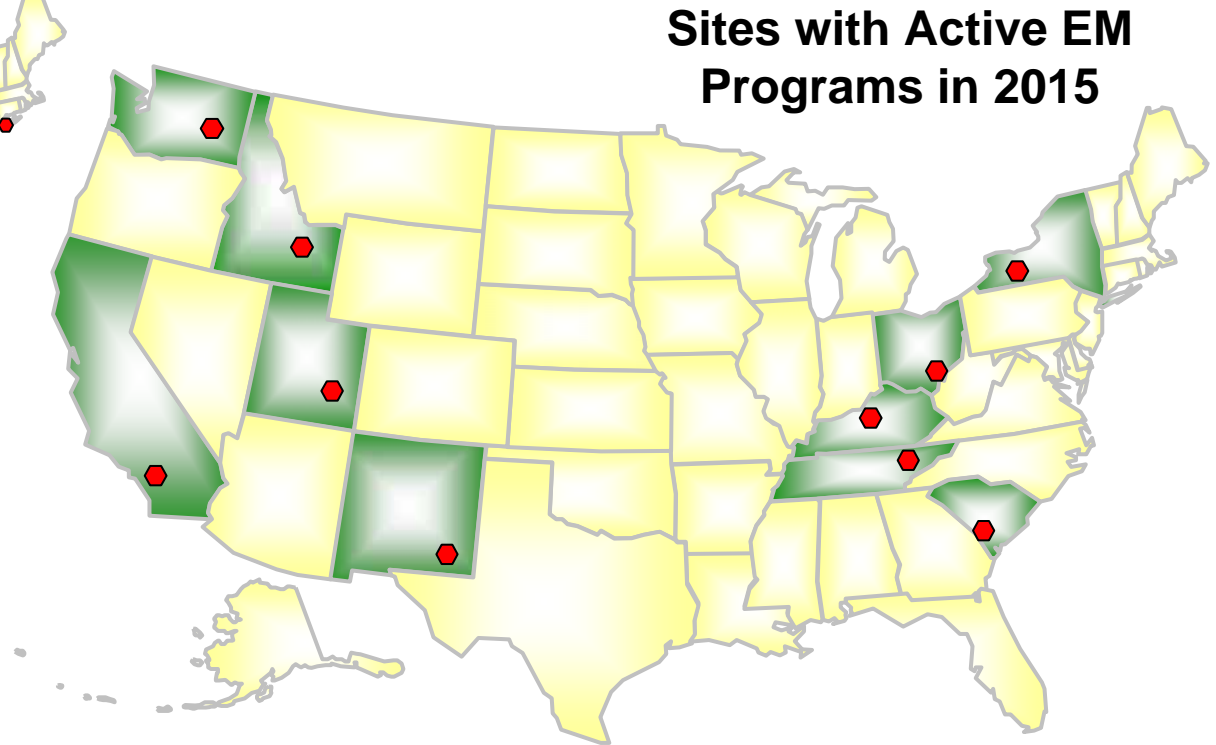
U.S. Department of Energy



# Small Site Near-Term Completion



**Sites with Active EM Programs in 2008**



**Sites with Active EM Programs in 2015**

**Cleanup activities at 22 sites in 14 states – to 10 sites in 10 states  
Reduce EM footprint from 900 square miles to 135 square miles  
Significant reduction in life-cycle cost**



**EM Environmental Management**

safety ❖ performance ❖ cleanup ❖ closure

*U.S. Department of Energy*

# Reutilization of Assets/Energy Parks

- EPI will convert EM liabilities (contaminated sites, facilities, and materials) into assets to solve critical national energy issues
- EPI can demonstrate effective partnering of DOE, other Federal agencies, private industry, state and local governments, and local communities
- EPI can preserve and enhance economies of state and local host communities of DOE/EM sites with energy reindustrialization



**EM's unique resources can be leveraged to address some of the Nation's energy security and climate change concerns**



**EM** Environmental Management

safety ❖ performance ❖ cleanup ❖ closure

*U.S. Department of Energy*

# American Recovery and Reinvestment Act - 2009

- Focusing on “shovel ready, boots on the ground” projects contributing to footprint reduction and small site completions
- Requiring rapid deployment of resources with transparency of activities and accountability for results
- Developing dedicated EM project team
  - Safety/Operational Readiness
  - Project Management
  - Budget
  - Contracting
  - Regulatory
  - Communications

YOUR MONEY *at* WORK  
RECOVERY.GOV

**Contributes to jobs creation, EM life cycle cost savings, and energy parks**



**EM** Environmental Management

safety ❖ performance ❖ cleanup ❖ closure

U.S. Department of Energy

# *The Challenge – Maintaining EM's Momentum*



- Managing performance-based projects with life cycles over several decades
- Safely conducting work
- Producing results with robust project management practices
- Applying first-of-a-kind technologies
- Achieving footprint reduction and near-term completions
- Managing and maintaining an “able and stable” workforce



**EM** Environmental Management

safety ❖ performance ❖ cleanup ❖ closure

*U.S. Department of Energy*



## *For More Information ...*

*Visit the Office of Environmental Management website*

*[www.em.doe.gov](http://www.em.doe.gov)*

or

*Contact Jim Fiore, Acting Director*

*Office of Communications and External Affairs*

*(202) 586-5125*