

# River Corridor Closure Project

# Waste Management

*Presented by*

John Fulton, Washington Closure Hanford

February 2007

U.S. Department of Energy  
Richland Operations Office



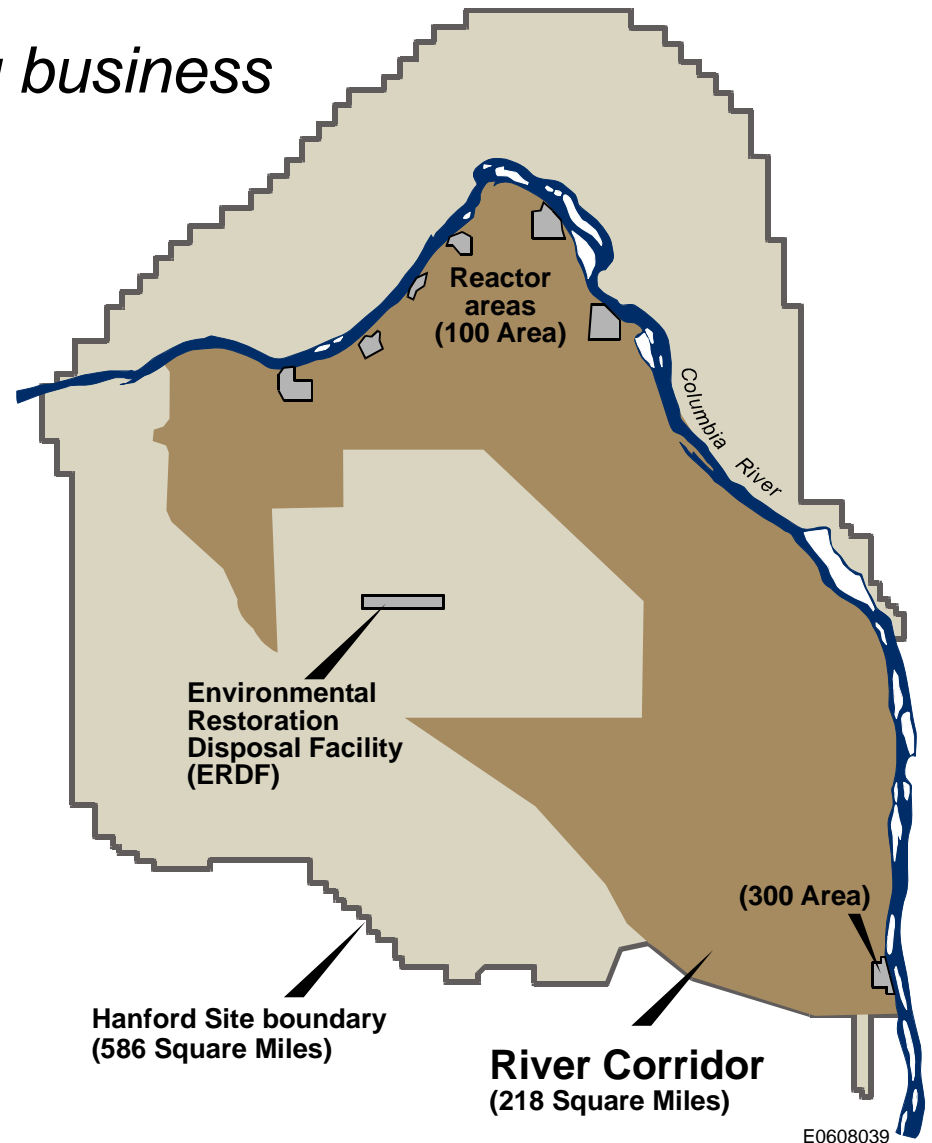
# River Corridor Contract

## *A new way of doing business*

- Incentivized contract to reduce cost and improve efficiency
- Increased DOE oversight to ensure environmental compliance
- Expectation that “Closure Culture” spreads to other cleanup work

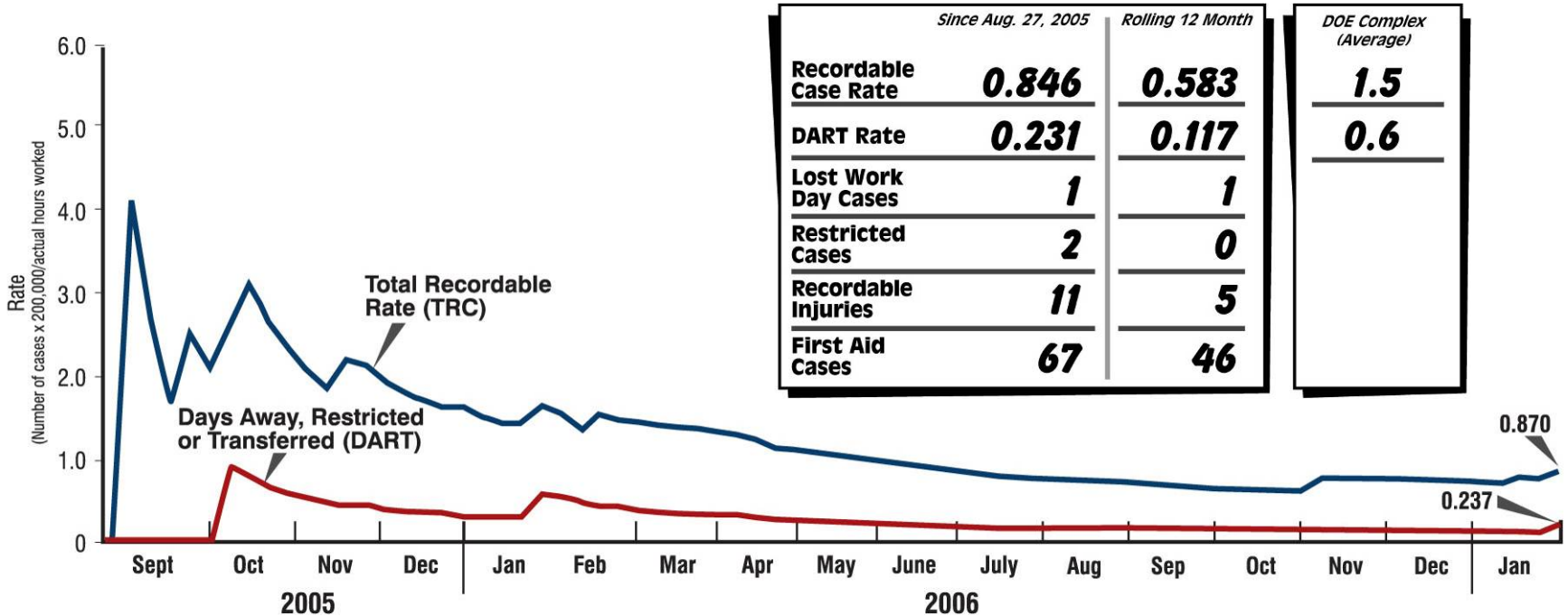
### ***WCH brings together talent and lessons learned from:***

- Environmental Restoration Contract at Hanford
- Savannah River Site
- Rocky Flats
- Miamisburg Closure Project
- West Valley
- Weldon Springs
- Commercial nuclear sector



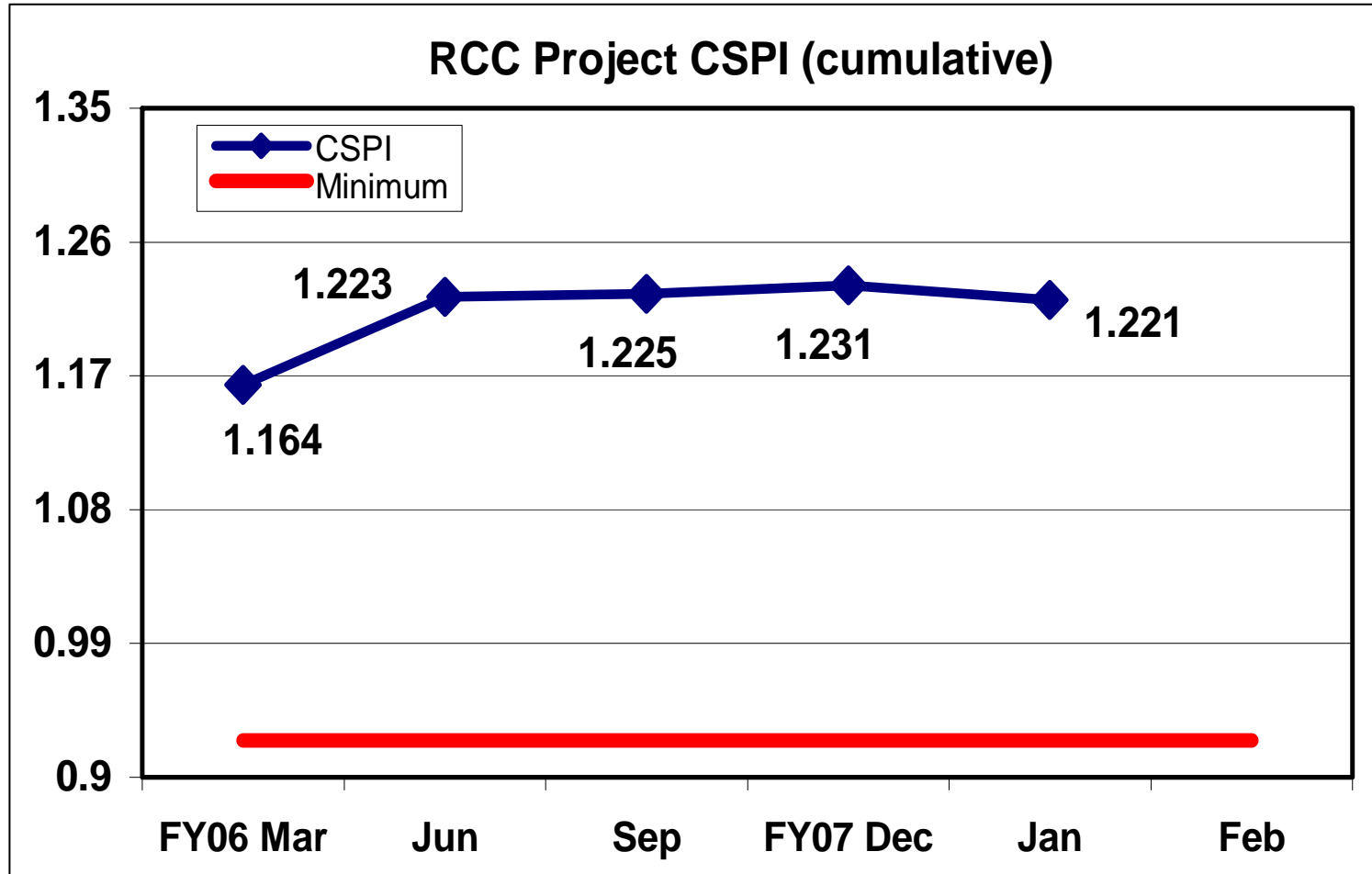
# Total Recordable Rate/Days Away, Restricted or Transferred Performance

As of February 3, 2007



Worked 2.5M hours without a lost work day

# Cost/Schedule/Performance Indicator (CSPI)



**Contract terms (CPIF) \$2.2B (with fee), target completion 2013**

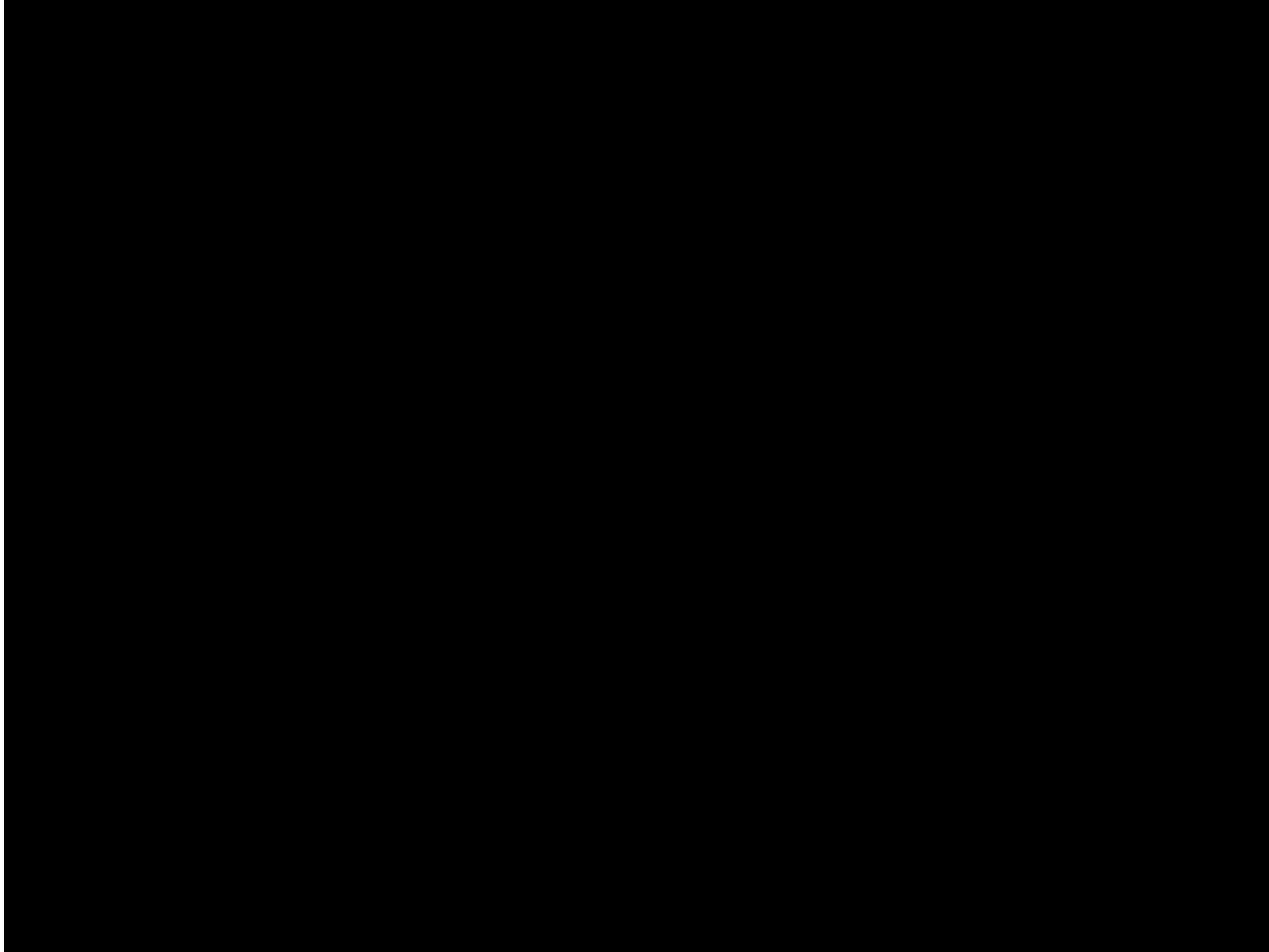
**Cost Variance (PMB): \$62,112K; 21.8%**

**Schedule Variance (PMB): \$39,653K; 16.2%**



## *The People Behind the Work*

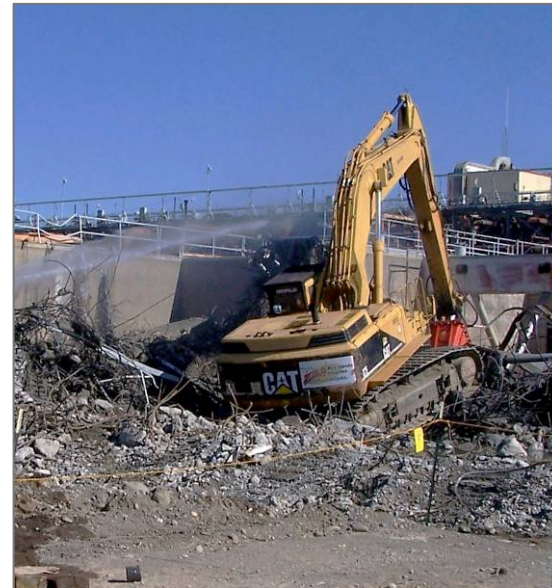
# 377 Building Demolition



# D4 (Deactivation, Decontamination, Decommissioning and Demolition)

## Progress to Date

Demolished 75 of 486 structures in the 300 and 100 Areas, 50 more than planned



# Field Remediation

## Progress

Cleaned up 54 of 370 wastes sites, 41 more than planned

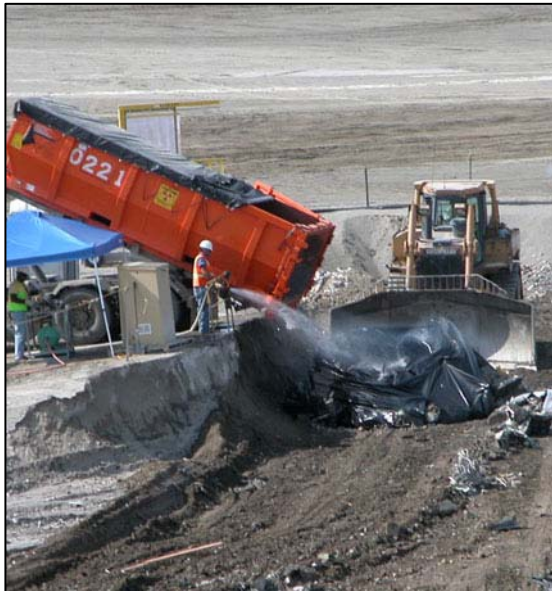




# Waste Operations

## Progress

Treated, transported and disposed 732,000 of 4 million tons of waste, 344,000 tons more than planned



# Reactor Interim Safe Storage

## Progress

Initialized removal of hazardous materials at N Reactor to prepare for interim safe storage



# End State and Final Closure

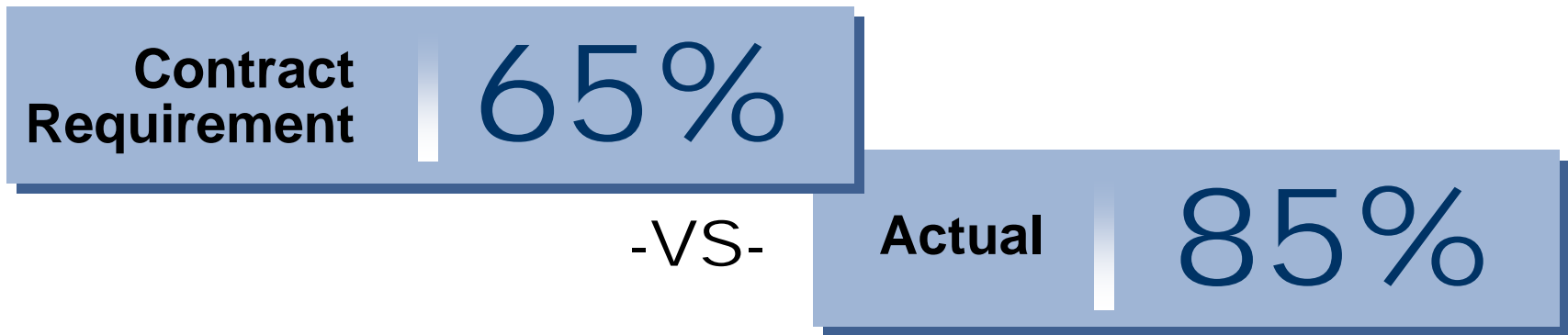
## Progress

Over 1,200 samples collected to support River Corridor Baseline Risk Assessment



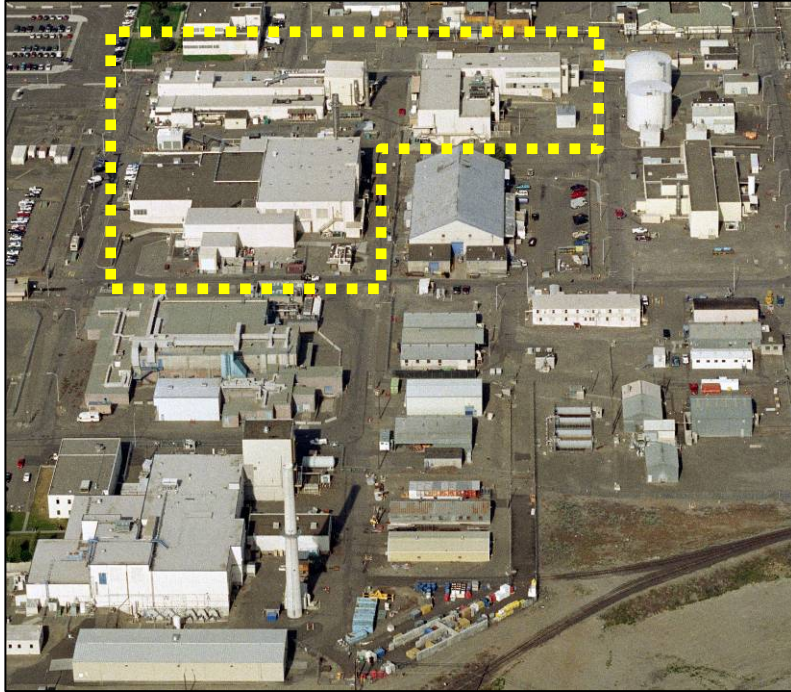
# Small Business Subcontracting Performance

*Through January 2007*



- *Since October 2005, over **\$92 million** has been spent with small businesses*
- *Currently mentoring two protégé firms*
  - *Integrated Logistics Services, Inc.*
  - *Terranear PMC*

# Potential Schedule Impacts



**Availability of PNNL occupied facilities**

***Highly complex facilities with radiological and chemical contamination***

***and...*** ISS of KE and KW reactors may be delayed due to late completion of the Fuel Basin Deactivation Project

# Technical Challenges

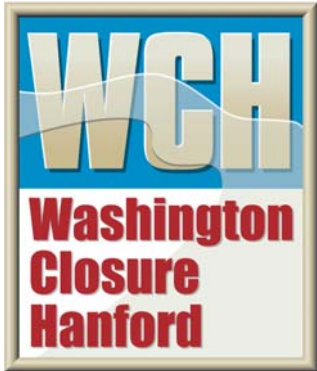
## Demolition of 324 and 327 Building Hot Cells

- High rad dose potential
- Thick shield walls
- Heavy lifts – heavy haul

## 618-10 and 11 Burial Ground Remediation

- Suspected transuranic and high dose items randomly disposed
- 618-11 is next to operating nuclear reactor
- Limited documentation (type and quantity of material)
- Disposed with no intention of retrieval

# River Corridor Closure Project



Working  
*Safe*

Over 2.5 million hours  
without a lost work day

Working  
*Hard*

17% ahead of schedule

Working  
*Smart*

22% under budget