



United States Department of Energy  
Oak Ridge Office  
*Accomplishing the Mission*



# Environmental Cleanup at Operating Sites

*Safety and Security Considerations*

February 27, 2007

Gerald Boyd

Manager, DOE Oak Ridge Office



**EM** *Environmental Management*

safety ❖ performance ❖ cleanup ❖ closure

[www.em.doe.gov](http://www.em.doe.gov)

# Challenges of a Cleanup Mission Within An Operating Site

- **Safety**
- **Security**
- *Baseline Acceleration*
- *Waste Management*

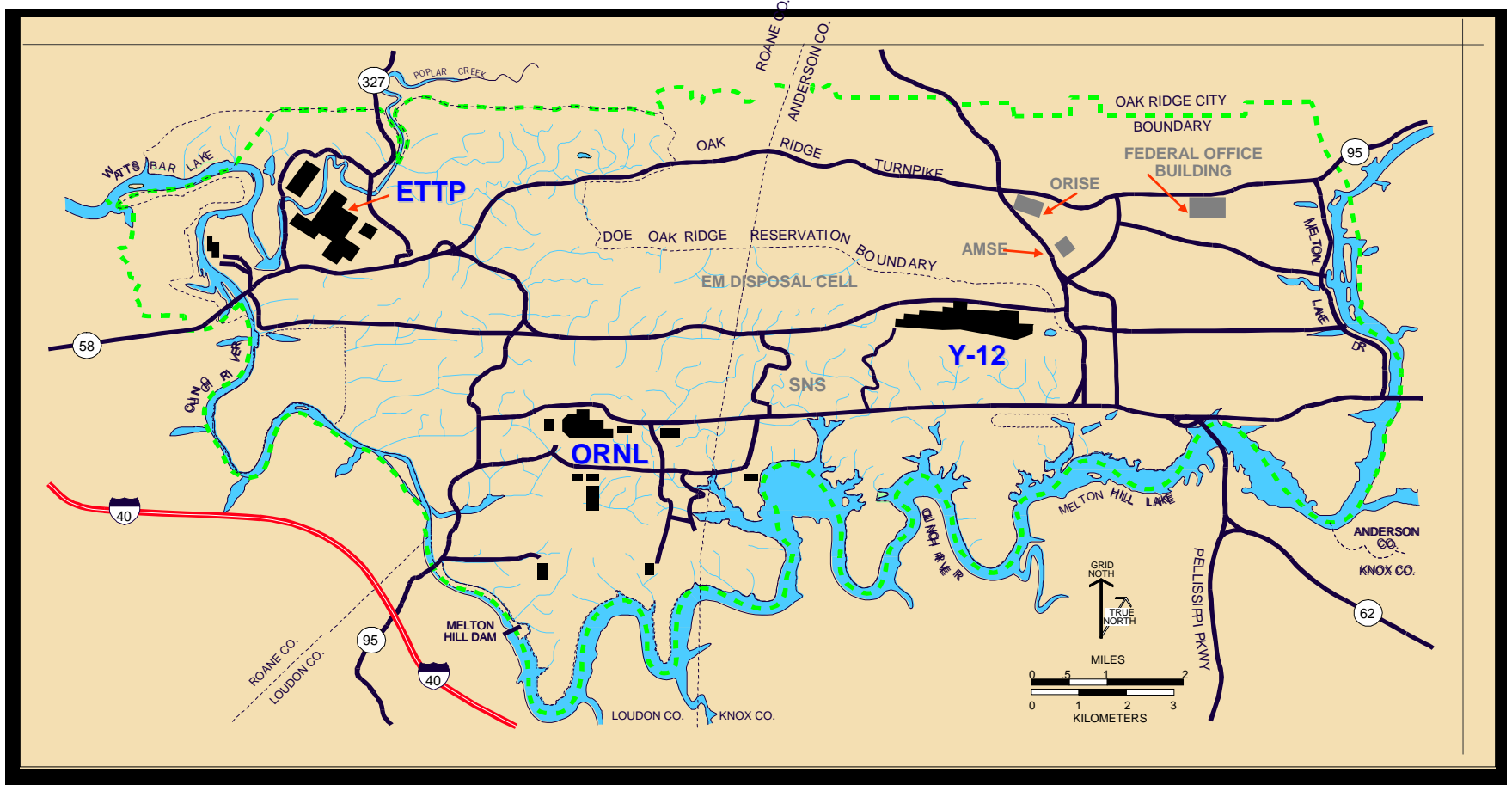


***EM*** *Environmental Management*

*safety ❖ performance ❖ cleanup ❖ closure*

[www.em.doe.gov](http://www.em.doe.gov)

# Oak Ridge cleanup mission at 3 operating sites



Private sector tenants work on the same site as cleanup contractors and staff supporting other DOE programs



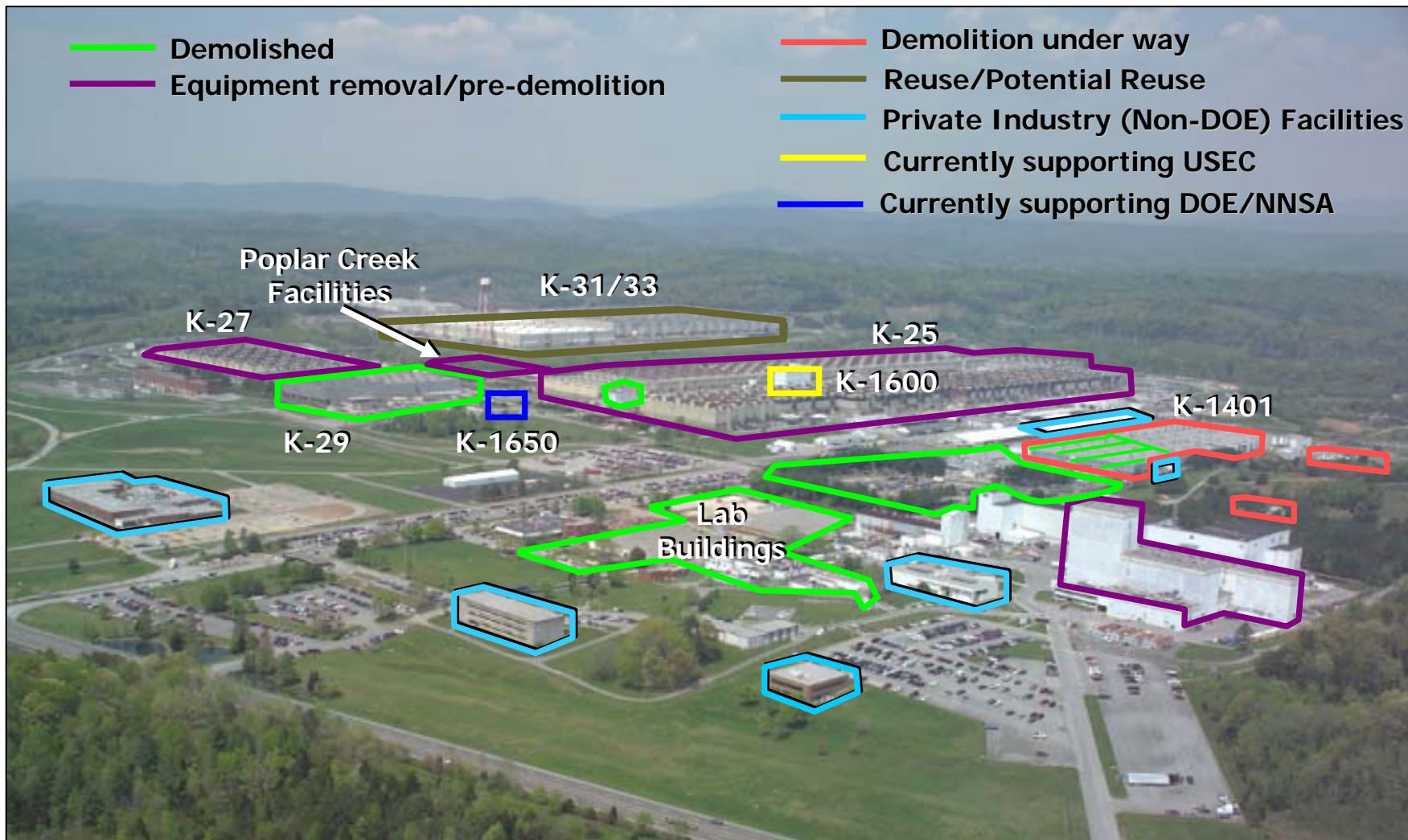
**EM** Environmental Management

safety ❖ performance ❖ cleanup ❖ closure

[www.em.doe.gov](http://www.em.doe.gov)

# The East Tennessee Technology Park

## One Site, Many Uses

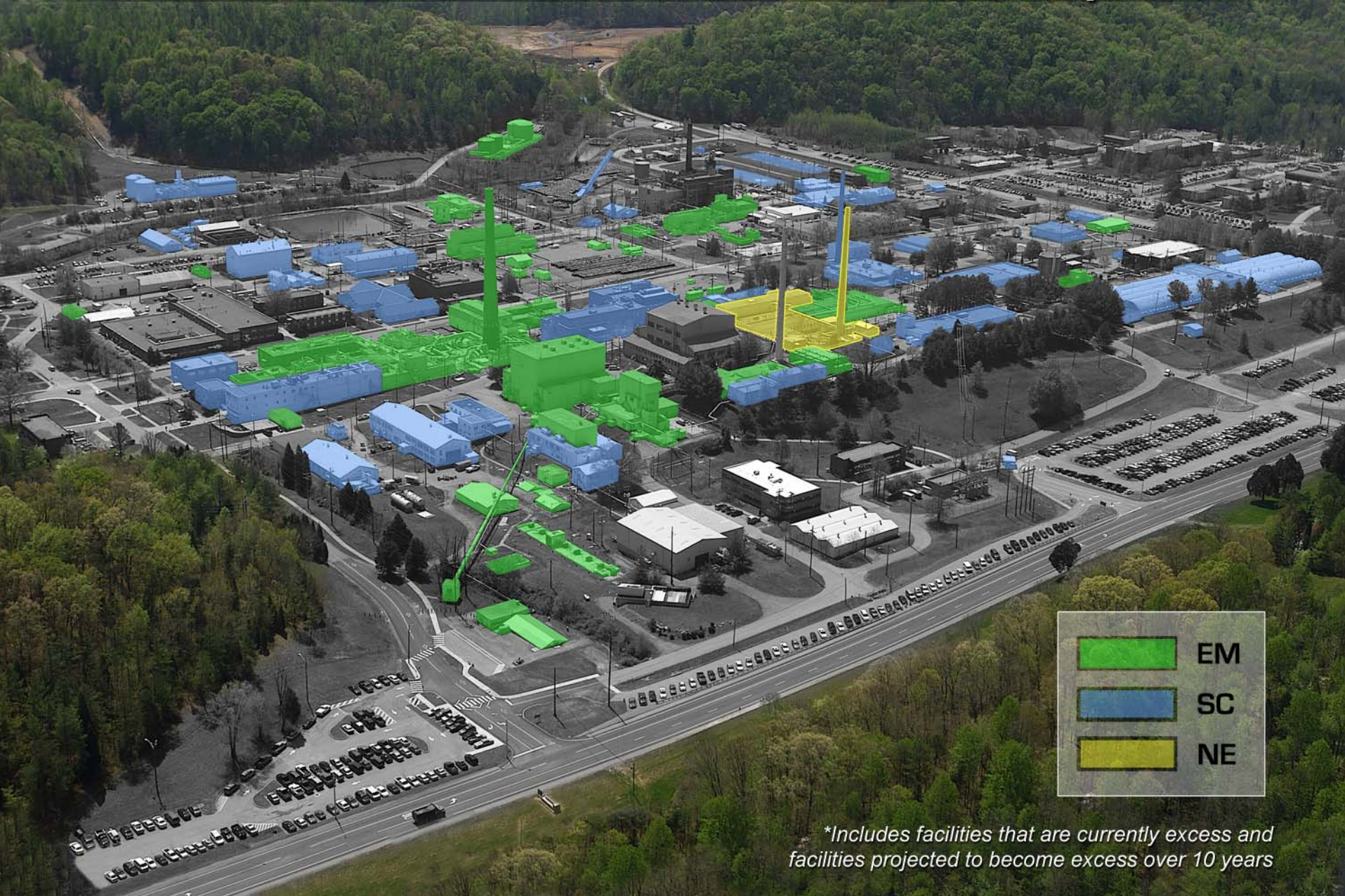




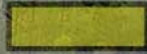
**EM Environmental Management**

safety ❖ performance ❖ cleanup ❖ closure

[www.em.doe.gov](http://www.em.doe.gov)

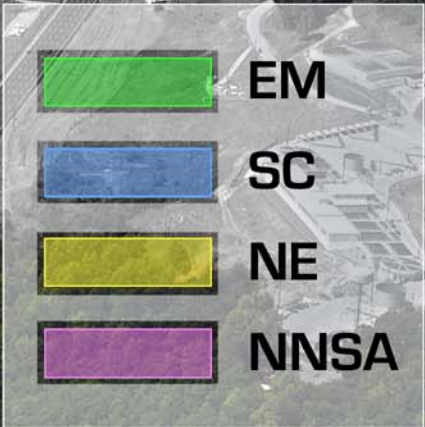
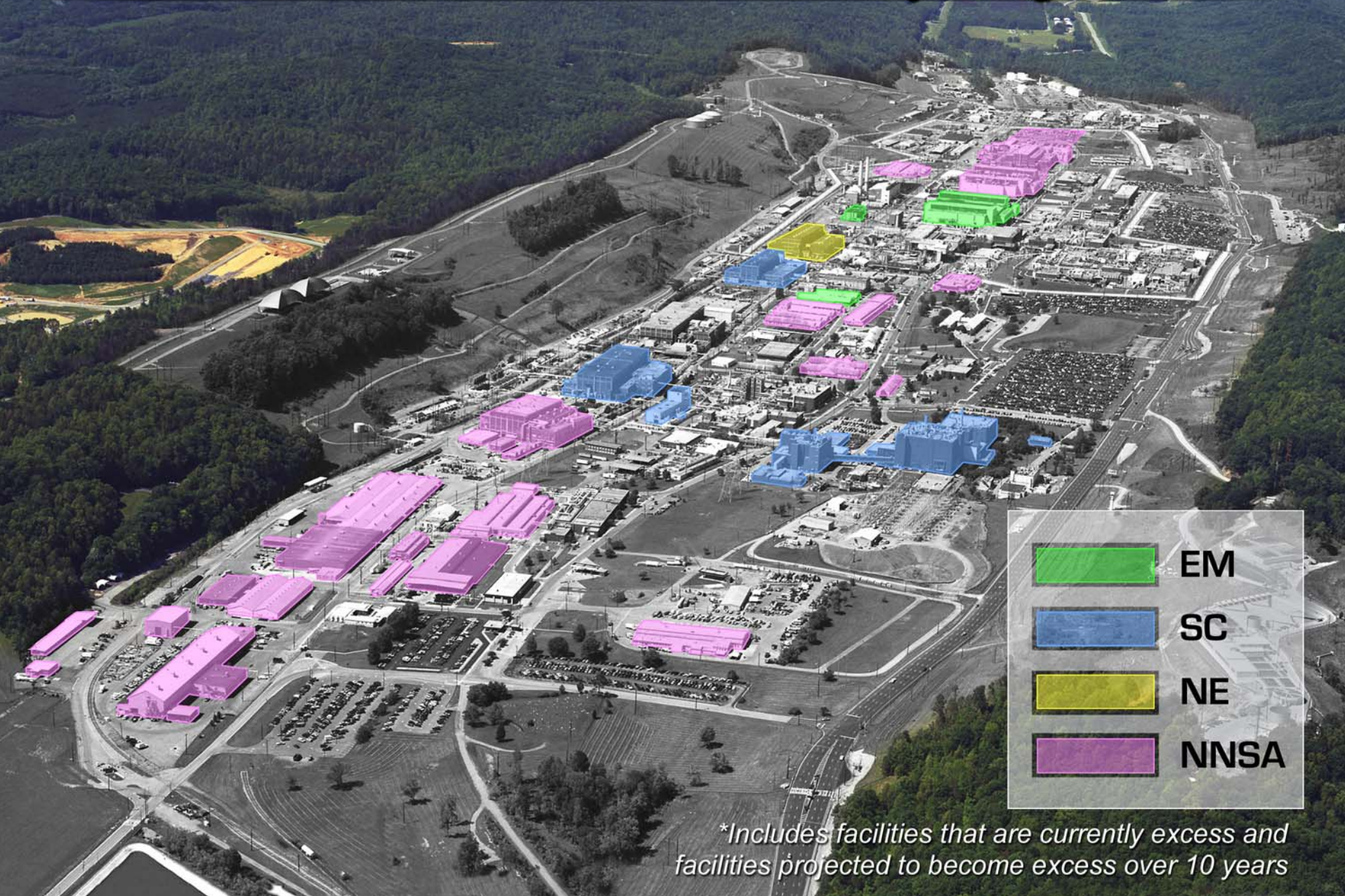
# Excess Facilities in ORNL Central Campus\*



	EM
	SC
	NE

*\*Includes facilities that are currently excess and facilities projected to become excess over 10 years*

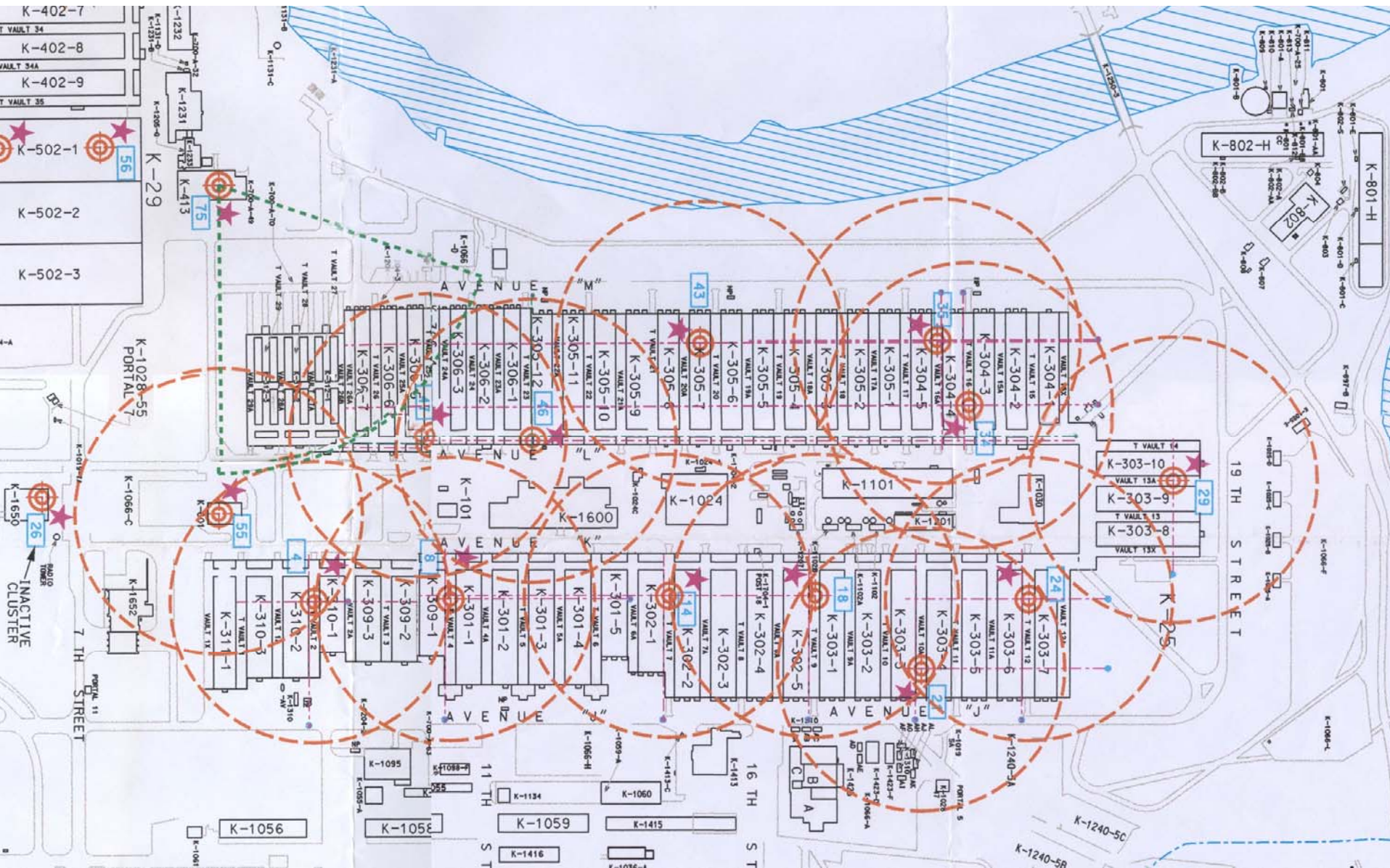
# ORO Excess Facilities at Y-12 by Program\*



\*Includes facilities that are currently excess and facilities projected to become excess over 10 years

# Safety and Security Lessons Learned

- Early consideration of human performance in high security areas is a must
- Safety and Security Specialists need to be included in the design process
- Optional security requirements need to be balanced against safety implications
- Everyone needs to know how to respond to injuries in a secure area
- Safety requirements need to be established for tenants
- Private company activities and site cleanup activities must be well coordinated
  - Emergency warning systems
  - Evacuation procedures and routes



# EM Environmental Management

safety ❖ performance ❖ cleanup ❖ closure

[www.em.doe.gov](http://www.em.doe.gov)



# Other Considerations on a “Shared Site”

- As we make EM progress, we continue to transfer government infrastructure
  - Transfer of utilities and availability of buildings and land to the private sector
  - Open access to support commercial businesses located on the site
- Establish strong relationships with all site entities to establish systems that will ensure the safety and security of all site occupants
- Communicate, communicate, communicate





# ***E*** ***M*** *Environmental Management*

safety ❖ performance ❖ cleanup ❖ closure

[www.em.doe.gov](http://www.em.doe.gov)

Regardless of our jobs, we all put our respirators on the same:  
One strap at a time!!!



**EM** Environmental Management

safety ❖ performance ❖ cleanup ❖ closure

[www.em.doe.gov](http://www.em.doe.gov)