

WM Symposia, Inc.

Corporate Officers

Chairman of the Board

Sue J. Mitchell,
Jacobs

President

Jack L. McElroy,
RWE NUKEM Corp.

Treasurer

Robert F. Williams,
WTA, Inc.

Secretary

Fred Sheil, BNFL

Legal Council

James Glasgow,
Morgan, Lewis & Bockius, LLP

Executive Director

Warren H. Bodily,
WM Symposia, Inc.

Board Members

Paul Crawley, Palo Verde Nuclear Generating Station

Julie D'Ambrosia, EnviroTech Associates, Inc.

James Gallagher, Gallagher Consulting Group

Abbas Ghassemi, NMSU/WERC

William T. Gregory III, Vinculum

Stephan Halaszovich, FZJ

Lawrence Harmon, MACTEC, Inc.

William Harris, Amarillo National Research Center

Steven P. Kadner, Canberra Aquila, Inc.

Hiroshi Kuribayashi, Japan Manned Space Systems Corporation

C. Clint Miller, Pacific Gas & Electric Co.

Michelle Rehmann, International Uranium (USA) Corporation

Fred Sheil, BNFL

Donald J. Silverman, Morgan, Lewis, and Bockius, LLP

James W. Voss, The Terra Verde Group of Companies

Board Members Emeritus

Ron K. Bhada, New Mexico State University

Scott Dam, JUPITER Corp.

Howard M. Frederick, Consultant

James Glasgow, Morgan, Lewis & Bockius, LLP

John Hurley, Consultant

Alec E. Kelley, Professor Emeritus

James G. McCray, Professor Emeritus, University of Arizona

Takao Nakajima, JAIF & Kurihalant Co., Ltd.

Roy G. Post, Professor Emeritus, University of Arizona

Morton E. Wacks, Professor Emeritus, University of Arizona

Future WM Dates

WM'04 2-29/3-4

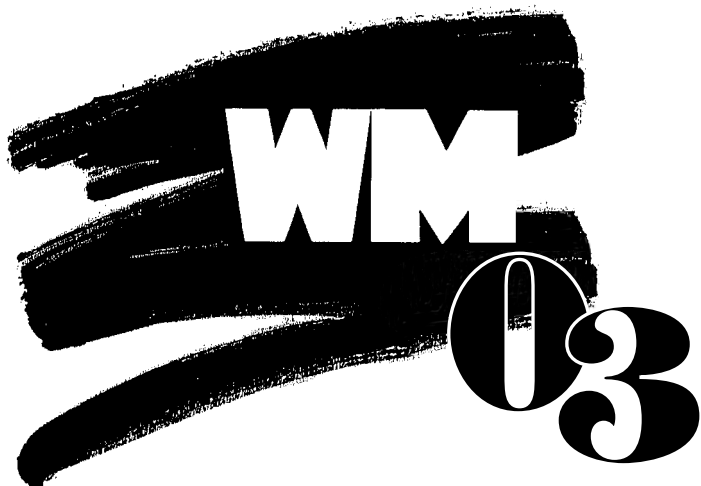
WM'05 2-27/3-3

WM'06 2-26/3-2

WM'07 2-29/3-3



Call For Abstracts



*"HLW, TRU, LLW, Mixed, Hazardous Wastes
and Environmental Restoration-Waste
Management, Energy Security, and a Clean
Environment"*

**February 23 - 27, 2003
Tucson, Arizona**

Printed on Recycled Paper

RETURN SERVICE REQUESTED

WM Symposia, Inc.
P.O. Box 35340
Tucson, AZ 85740

NON-PROFIT
ORG.
U.S. Postage
PAID
TUCSON, AZ
Permit #550

Program Advisory Committee

Leon C. Borduin, Technical Program/PAC Chair
Morton E. Wacks, Asian PAC Chair
Marshall J. Anderson, BDM Federal, Inc
Harry Babad, Consultant
Michael J. Bell*, IAEA
Gary Benda, US ENERGY Corp.
Bob W. Benedict, Argonne National Lab.
Ed J. Bentz, E. J. Bentz & Assoc.
Ron K. Bhada, New Mexico State University (WERC)
Enrique A. Biurrun*, DBE
Dick Blauvelt, WPI
Warren H. Bodily, WM Symposia, Inc
Arnold Bonne*, IAEA
Angie Brill, Safety & Ecology Corporation (SEC)
Tom M. Brouns, Pacific Northwest National Laboratory
Steve H. Brown, IT Corporation
Connie J. Callan, The University of New Mexico/WERC
Timothy K. Campbell, WASTREN, Inc.
Albert E. Castagnacci, Duquesne Light
Donald E. Clark, DEC Enterprises
Hans Codee*, COVRA
Michael J. Connolly, INEEL
Jim R. Cook, SRTC
A. Scott Dam, JUPITER Corporation
Julie D'Ambrosia, EnviroTech Associates, Inc.
Ed Day, PELL Resources Inc.
Ramesh Dayal*, IAEA
Murthy S. Devarakonda, Westinghouse TRU Solutions
Jas Devgun, Sargent & Lundy
David C. Durham, Fluor Corporation

Dave L. Eaton, INEEL-TMFA
Leif G. Eriksson, GRAM, Inc.
Bernard Esteve*, EDF
Erich Evered, Jacobs
Thecla R. Fabian, Nuclear Waste News/ Business Publishers, Inc.
Daro Ferrara, Westinghouse Savannah River Company
Hans Forsstrom*, EC
Al A. Freitag, WMG, Inc.
Markus Fritsch*, NAGRA
Critz George, Consultant
Carl P. Gertz, DOE
Jean-Pierre Ghysels*, EDF/SEPTEN
Valentin Gonzales*, ENRESA
William T. Gregory III, Vinculum
Michael Gresalfi, Oak Ridge National Lab
Kenneth P. Guay, US DOE, NNSA, Y-12 Area Office
Stephan Halaszovich*, FZJ
Linda James Hanus, SAIC
Lawrence Harmon, MACTEC, Inc.
Jorma Heinonen*, Consultant
Julian Hill, Pacific Northwest National Laboratory
William C. Hunkele, PSEG LLC
Leslie J. Jardine, LLNL
Edward A. Jennrich, URS Corporation
Antoine Jouan*, Consultant
Myron Kaczmarzky, Stone & Webster
Paul D. Kalb, Brookhaven National Laboratory
John Kennerly, Consultant
Jeffrey A. Kerridge, CH2M-Hill
Dieter A. Knecht, Consultant
Peggy A. Knecht, Consultant
Radovan Kohout*, Kohout & Associates
Stan Kosiewicz, LANL
Hiroshi Kuribayashi*, Japan Manned Space Systems Corporation
Kun Jai Lee*, KAIST
Linda L. Lehman, T-Reg, Inc.
Jerry Lester, Fluor Daniel Inc.

Martin Letourneau, Jason Associates Corporation
Maria Lindberg*, Studsvik RadWaste AB
Sheila Little, Jacobs
Ellen Livingston-Behan, USDOE
Werner Lutz, University of New Mexico
Paul J. Macbeth, URS Corporation
Margaret MacDonell, Argonne National Lab
Marty Martinez
Herve G. Masson*, COGEMA
John Mathieson*, UK Nirex Ltd.
Mark Matthews, USDOE
John A. Mayer, Jr., WPI Emeritus
Lloyd W. McClure, Jacobs
Charles McCombie*, McCombie Consultants
Jack L. McElroy, RWE NUKEM Corporation
A. Rex Meeden, AZ Public Service
Shankar Menon, Menon Consulting AB
Lance J. Mezga, ORNL/UT-Battelle
Clint Miller, PG & E
Sue J. Mitchell, Jacobs
Sitakanta Mohanty, Center for Nuclear Waste Regulatory Analyses
Barry C.K. Moravek, Information Matters, LLC
Gerald P. Motl, Envirocare of Utah, Inc.
Bill Murphy, MELE Associates
Tom L. Nauman, Stone & Webster, Inc.
James Navratil, Clemson University
Neil Norman, Parsons
Infrastructure & Technology
Michael I. Ojovan, SIA "Radon"
Larry C. Oyen, Larry Oyen Consulting
Alan Pasternak, California Radioactive Materials Management Forum (Cal Rad Forum)
Claudio Pescatore*, OECD/Nuclear Energy Agency
Glenn Pierce, MERRICK
Mike Raudenbush, INTERTECH
Larry Regens, University of Oklahoma

Michelle Rehmann, International Uranium (USA) Corporation
Piero Risoluti*, ENEA
Vincent Roland*, Transnucléaire
Nancy Rothermich, Lawrence Berkeley Lab
Elizabeth C. Saris, SAIC
Detlef Schmidt*, RWE NUKEM GmbH
Fred Sheil*, BNFL
Rainer Simon*, Consultant
Steven Slate, PNNL
Renee H. Spire, Westinghouse Savannah River
Sergey Stefanovsky*, SIA Radon
David Stewart, Retired
Roger Stigers, Pennsylvania Power & Light Co.
Michael Szukala*, Siempelkamp Nukleartechnik GmbH
Jacques Tamborini*, ANDRA
Mervyn Tano, IIRRM
Edmund C. Tarnuzzer, Consultant
James Testa, Consultant
Jack Tuohy, Burns & Roe
Linda Ulland, Environmental Consultant
Karl Umstadter, Archimedes Technology Group, Inc.
Luis Valencia*, FZK
Mark Vandale, Duke Engineering and Services, Inc.
Bernard Vigreux*, SFEN
David Waite, CH2M Hill
Ray Walton, Jr., Consultant
Wendell D. Weart, WD Weart Consulting
Steve A. Wiegman, USDOE
Evelyn H. Wight, WPI
Irving Williams II, COGEMA Inc.
Donald E. Wood, GaeaTech Services
Bill E. Wowak, Management and Technical Solutions
Chuan F. Wu, USDOE
Ali Yazdi, Consultant
Richard H. Yoshimura, SNL
M. Bernie Zgola*, CNCS
David Zigelman, WSRCTC
* Member International Committee

Additional topics and workshops will be shown on the WM'03 homepage at www.wmsym.org

Please Attach This Form to the Submitted Abstract

TOPIC NUMBER (From sub-topic list on homepage—*must be supplied for consideration*): _____

Have you communicated with a Session Organizer ☐ yes ☐ no If yes, with whom? _____

TITLE OF ABSTRACT: _____

AUTHORS: _____

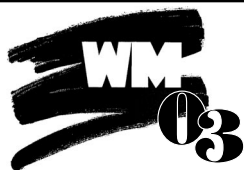
Permission to publish on the WM'03 homepage (with access limited to PAC for review purposes) ☐ yes ☐ no

*I understand that acceptance of this paper for presentation **requires a draft paper** for review by Nov. 15, 2002 and an author-provided manuscript (in prescribed format) by January 17, 2003. **If your paper is not presented at the conference, it will not be published.***

(Please type or Print)

Contact Author (Circle one): Dr. Mr. Ms.

First Name:	M.I.:	Last Name/Family Name:	
Department:	Company Name:		
Mailing Address:		Mail Stop/Suite #/APT #:	
City:	State/Region:	Zip/Postal Code:	Country:
Phone:	Fax:	E-mail:	



Call for Abstracts

**WM'03 will be held February 23 - 27, 2003
at the Tucson Convention Center, Tucson, Arizona.**

Welcome to WM'03, the 29th Waste Management Symposium—the premier annual conference of the nuclear waste management industry! You are cordially invited to come and join us at this event. The conference is organized by WM Symposia, Inc., an Arizona non-profit corporation, and is hosted by the University of Arizona. Sponsoring organizations include the American Nuclear Society, New Mexico State University Waste-Management Education and Research Consortium (WERC), the American Society of Mechanical Engineers and NEA/OECD. The conference is also organized in cooperation with the U.S. Department of Energy and International Atomic Energy Agency. WM'03 will include invited and contributed papers describing research, development and operational experience over the complete spectrum of nuclear waste activities. Proposed session topics are categorized into Tracks (see next page). **General track titles and topics are found in this document; more detailed sub-topic information can be found at <http://www.wmsym.org>.** Tracks 2, 3, 9, and 10 include specific waste type issues. Topics that may apply to several waste types are included in Tracks 1, 4, 5, 6, 7, and 8. Session topics include both national and multi-national subjects, unless stated otherwise. To assist international participants, the names of contact people outside the U.S. are provided for as many topics as possible.

Submitted abstracts must: 1) include a descriptive title, 2) summarize the work conducted including the results, and 3) briefly describe the importance of the work (what problem it solves). Abstracts should be long enough (1-2 pages) to convey the substance of your proposed paper and meet the stated criteria. The conference review criteria "Abstract Rating Form" will be posted on the web for author information. If the listed sub-topics are too restrictive, submit the abstract under the main track number 1-10. If you cannot place the abstract within tracks 1-10 then submit to track 11.0 (General). The fully completed attached form must accompany the abstract for it to be considered. Upon receipt of author approval, abstracts will be made available on the WWW on a restricted access basis to Program Advisory Committee (PAC) members and Session Organizers (SO's) two weeks prior to the Abstract Review. Abstracts will not be placed on the WWW without the author's approval, but such approval will not influence acceptance of the abstract. The PAC will critically review each abstract to determine if it meets the criteria of technical content and significance. Abstracts not meeting the above criteria or submitted after the due date may not be considered by the PAC. Approved abstracts will be assigned to either an oral, poster or workshop session by the Technical Program Chairman with the advice of the PAC. The criteria for paper assignment within the conference program are intended to assure that each paper is presented in the method of presentation best suited for its content, format and anticipated audience interaction.

Complete papers are required for both poster and oral presentations.

Concerns about the quality of some papers, often attributed to inadequate preparation, led to our **current policy of requiring that full papers be written and reviewed before presentation.** The full papers for both poster and oral presentations will be published on CD-ROM and on the WWW. Abstracts that are accepted require that you present the paper at the conference. **The paper will not be published if it is not presented.**

Abstracts should be 1 to 2 pages in length. The abstract header should begin flush left and show the name of the conference, WM'03, the proposed topic or sub-topic number, which best covers the abstract's content, and list the contact name, affiliation, phone, fax, and e-mail address. The paper title should follow two spaces below, centered in all caps. The authors and their affiliations should be typed one space below the paper title in title case. The text should begin two spaces under the authors' names and affiliations.

Interested contributors may submit extended abstracts via either 1) the electronic submittal form on the WM'03 homepage or E-mail to abstracts@wmsym.org. (**You must include the information from the abstract submittal form along with your attachment**) or 2) Mail in a 3 1/2" diskette and abstract submittal form. **Faxes will not be accepted.**

WM'03 Proposals

Sub-topics

1.0 CROSSCUTTING POLICIES & PROGRAMS

Mark Matthews, USDOE-CAO (Chair)
V: 505-234-7467, F: 505-234-7425
Email: mark.matthews@wipp.ws
John Mathieson, UK Nirex Ltd. (Chair)
V: 44-1235-825-606, F: 44-1235-825-459
Email: john@nirex.co.uk
Don Wood, GaeaTech Services (Chair)
V: 509-375-3243
Email: p53bhw@gocougs.wsu.edu

This track includes overall policy and program planning, development, integration, implementation, and management issues. Other appropriate topics include regulatory issues, energy security, legal aspects, modeling, permitting and compliance activities, criteria and standards development, privatization issues, technology deployment, agency and state issues (including multiparty agreements), interface, security, and crosscutting issues that involve multiple waste types or programs. This topic particularly encourages the presentation of waste management programs and policies at the national, multi-national and international level. Similar topics that are specific to a single waste type (e.g., HLW, LLW, TRU, ILW, etc.) or program (e.g., ER, D&D, etc.) listed elsewhere in the Track set should be submitted for that waste type or program.

2.0 HIGH-LEVEL AND SPENT-FUEL

Harry Babad, Consultant, (Chair)
V: 509-375-0328, F: 509-375-4180
Email: hbabad@owt.com
Leif Eriksson, GRAM, Inc. (Chair)
V: 505-998-5191, F: 505-296-3289
Email: leif@graminc.com
Elizabeth Saris, SAIC (Chair)
V: 301-353-8332, F: 301-428-0068
Email: elizabeth.c.saris@saic.com

The HLW/Spent Fuel track encompasses: (1) All HLW and spent nuclear fuel operations from generation and storage through characterization, treatment and disposal; (2) Associated technology development and deployment; (3) International and domestic reprocessing strategies and technology; (4) Periodic progress updates oriented to specific DOE achievements in waste remediation and disposal activities; and (5) Crosscutting issues including interim and final disposal strategies for HLW, Spent Fuel, including associated environmental permitting and monitoring of stored waste, waste processing alternatives, waste form, disposal and operating facility performance and risk assessment, and the impacts of directly associated regulations and standards.

3.0 LOW-LEVEL, INTERMEDIATE, MIXED AND HAZARDOUS WASTE

Lloyd McClure, Jacobs (Chair)
V: 509-943-7280, F: 509-946-0502
Email: lloyd.mcclure@jacobs.com
Lance Mezga, Oak Ridge National Laboratory (Chair)
V: 865-574-7258, F: 865-576-3515
Email: run@ornl.gov

This LLW/ILW/MW/HW track encompasses: (1) operations from generation through treatment and disposal; (2) technology development, demonstration, and deployment; and (3) crosscutting issues including waste minimization, waste characterization and analysis, effluent monitoring, waste form and facility performance assessment, regulations and standards.

Abstract due by August 2, 2002
Authors Notified of Acceptance October 14, 2002
Draft Full Papers November 15, 2002
Reviewer Comments to Author December 13, 2002
Final Approved Papers Due January 17, 2003

Submit your abstracts to: abstracts@wmsym.org

For technical questions, please contact: Leon C. Borduin at
lborduin@wmsym.org

For non-technical questions, please contact: Donna McComb at
dmccomb@laser-options.com

ed Tracks and General Topics

ics can be viewed at: www.wmsym.org

4.0 TRANSPORTATION AND PACKAGING

Lawrence Harmon, MACTEC (Chair)

V: 301-353-9444, F: 301-353-9447

Email: lhharmon@mactec.com

Richard Yoshimura, SNL (Chair)

V: 505-845-8181, F: 505-844-0244

Email: rhyoshi@sandia.gov

The Transportation and Packaging Track includes all activities and issues related to the safe, secure, and economical transportation and packaging of radioactive materials. High-level, transuranic, low-level, and mixed low-level waste; fresh and irradiated nuclear fuel; contaminated media and debris; isotopes and radioactive sources; and uranium hexafluoride are all of interest to this Track. Topic areas include: 1) domestic and international regulatory activities, issues, and initiatives; 2) packaging development and related issues; 3) logistics and transportation operations, including large items from decommissioning; 4) integrated planning and scheduling; 5) status and issues for large shipping campaigns; and 6) stakeholder and public interactions and issues.

5.0 ENVIRONMENTAL REMEDIATION

Gary Benda, US Energy Corp. (Chair)

V: 803-345-2170, V: 803-345-2170

Email: gbenda_use@hotmail.com

Julie D'Ambrosia, EnviroTech Assoc., Inc. (Chair)

V: 301-762-9364, F: 301-762-9323

Email: jdambrosia@juno.com

This track includes all activities associated with environmental contamination investigation, remedial design, cleanup, closure, and long-term site management. Specific topics of interest include: site characterization; sampling and analysis; data management; regulatory issues and their resolution; remedial design, especially new remedial technologies; remedial actions; construction and operation/implementation of cleanup activities; aquifer restoration; management of waste resulting from cleanup activities; remediation verification; and stewardship. Of particular interest for WM '03 are presentations on: remediation technology performance over the long term; worker safety; the results of transfer of site land or facilities to commercial entities for economic reuse; long term stewardship implementation; and innovative practices that have resulted in reduced costs or expedited release.

6.0 NUCLEAR POWER PLANT (NPP) WASTE MANAGEMENT (Liquid, Wet and Solid LLW, Spent Fuel)

C. Clint Miller, Pacific Gas & Electric Co. (Chair)

V: 805-545-4582, F: 805-545-3459

Email: ccm1@pge.com

Michael Szukala, Siempelkamp Nukleartechnik GmbH (Chair)

V: 49-2151-894-203, F: 49-2151-894-466

Email: michael.szukala@siempelkamp.com

This Nuclear Power Plant Waste Management Track encompasses characterization and minimization, treatment, packaging and management of liquid, wet dry LLW, and spent fuel storage and management in reference to NPP.

7.0 PUBLIC COMMUNICATION, PARTICIPATION, EDUCATION AND TRAINING

William Murphy, MELE Associates (Chair)

V: 202-863-5083, F: 202-554-3267

Email: william.a.murphy@saic.com

Mervyn Tano, IIIRM (Chair)

V: 303-733-0481, F: 303-744-9808

Email: mervtano@iiirm.org

This track includes a broad range of social, environmental, policy, communication, and educational issues associated with waste management decision-making. The focus is on potentially affected interests, or stakeholders, who are outside the waste management professional field. Topics have typically covered public participation issues, communication techniques, education and training, socioeconomic and environmental impact analysis and mitigation. More recently, this topic area has discussed cultural issues (including

tribal perspectives), equity (including environmental justice, intergenerational equity) risk perceptions and communications.

8.0 D&D

Jas Devgun, Sargent & Lundy LLC (Chair)

V: 312-269-2283, F: 312-269-7313

Email: jas.s.devgun@sargentlundy.com

Albert A. Freitag, WMG, Inc. (Chair)

V: 914-736-7100, F: 914-736-7170

Email: aafreita@wmginc.com

This track includes all aspects of D&D from License Termination to Greenfield including Characterization, Decontamination, Dismantlement, Demolition, Waste Handling, Final Survey, and associated New Technology Development for both Government and Commercial Nuclear and Non-Nuclear Facilities in the US and internationally.

9.0 SPECIAL WASTES, MIGRATION, TENORM*, OR SPECIAL NON-TRACK ISSUES

Donald Clark, DEC Enterprises (Chair)

V: 509-371-1028, F: 509-371-9279

Email: donclark@gte.net

Michelle Rehmann, International Uranium (USA) Corp. (Chair)

V: 303-389-4131, F: 303-389-4125

Email: mrehmann@intluranium.com

Waste types other than LLW, ILW, Mixed Waste, TRU or HLW; emerging recycling or disposal technologies and regulatory developments for management of uranium or thorium byproducts or tailings, or TENORM. Control of migration from and long term surveillance for remediated sites. This track continues to include hydrogeologic, geochemical, and other aspects of radioactive waste management. In addition, in recognition of the fact that restoration, cleanup, and remediation projects often include methods for addressing the presence of hazardous (as well as radioactive) materials. This track provides opportunities for presenting waste operations, technology development, demonstration, and deployment, waste characterization and analysis, regulations, and standards as they relate to hazardous wastes. *TENORM - Technologically Enhanced Naturally Occurring Radioactive Material.

10.0 TRANSURANIC (TRU) AND LONG-LIVED RADIONUCLIDE WASTE MANAGEMENT

Stan Kosiewicz, LANL (Chair)

V: 505-665-9227, F: 505-665-3750

Email: stan@lanl.gov

Chuan F. Wu, USDOE (Chair)

V: 505-234-7552, F: 505-234-7027

Email: Chuan-Fu.Wu@wipp.ws

The transuranic (TRU) and long-lived radionuclide waste track encompasses: (1) all contact (CH)-TRU, remote handled (RH)-TRU, and long-lived radionuclide waste types, including orphan wastes of these types, from generation and storage through characterization, treatment, transportation, and disposal; (2) associated technology development and deployment including mobile / modular characterization deployments at large quantity and small quantity sites; (3) operational safety and security aspects of managing long-lived radioactive / mixed wastes; (4) legacy versus newly generated waste issues of these waste types; (5) Periodic progress updates on achievement of milestones at TRU disposal facilities and waste generating sites (U.S. and International); (6) crosscutting issues at the WIPP and waste generating sites including the regulatory framework, e.g., WIPP permit modifications, EPA compliance recertification, oversight, and TRUPACT II SAR revisions; and (7) issues related to expansion of the waste transportation fleet.

11.0 GENERAL

Abstracts that do not appear to fit into any other category.

Leon C. Borduin, Technical Program/PAC Chair

V: 520-292-5652, F: 505-455-2813

Email: lborduin@wmsym.org

M.E. Wacks, Asian Program Advisory Committee Chair

V: 520-696-0399, F: 520-696-0487

Email: mewacks@wmsym.org